

2 Industrial Buildings
For Sale or Lease

Sales Price: \$2,500,000

Lease Also Available: Call For Info

OWNER FINANCING AVAILABLE



3033 N.E. 23rd Street

Oklahoma City, Oklahoma 73121

PROPERTY HIGHLIGHTS

- 2 Industrial Buildings
 - 3031: 37,560 SF on 3.6 Acres MOL
 - 3035: 2,480 SF
- 11 Acres MOL
- Zoned I-2 & C-3



NO WARRANTY OR REPRESENTATION, EXPRESS OR IMPLIED, IS MADE AS TO THE ACCURACY OF THE INFORMATION CONTAINED HEREIN, AND THE SAME IS SUBMITTED SUBJECT TO ERRORS, OMISSIONS, CHANGE OF PRICE, RENTAL OR OTHER CONDITIONS, PRIOR SALE, LEASE OR FINANCING, OR WITHDRAWAL WITHOUT NOTICE, AND OF ANY SPECIAL LISTING CONDITIONS IMPOSED BY OUR PRINCIPALS. NO WARRANTIES OR REPRESENTATIONS ARE MADE AS TO THE CONDITION OF THE PROPERTY OR ANY HAZARDS CONTAINED THEREIN ARE ANY TO BE IMPLIED.

Bob Sullivan, CCIM

+1 405 641 9798

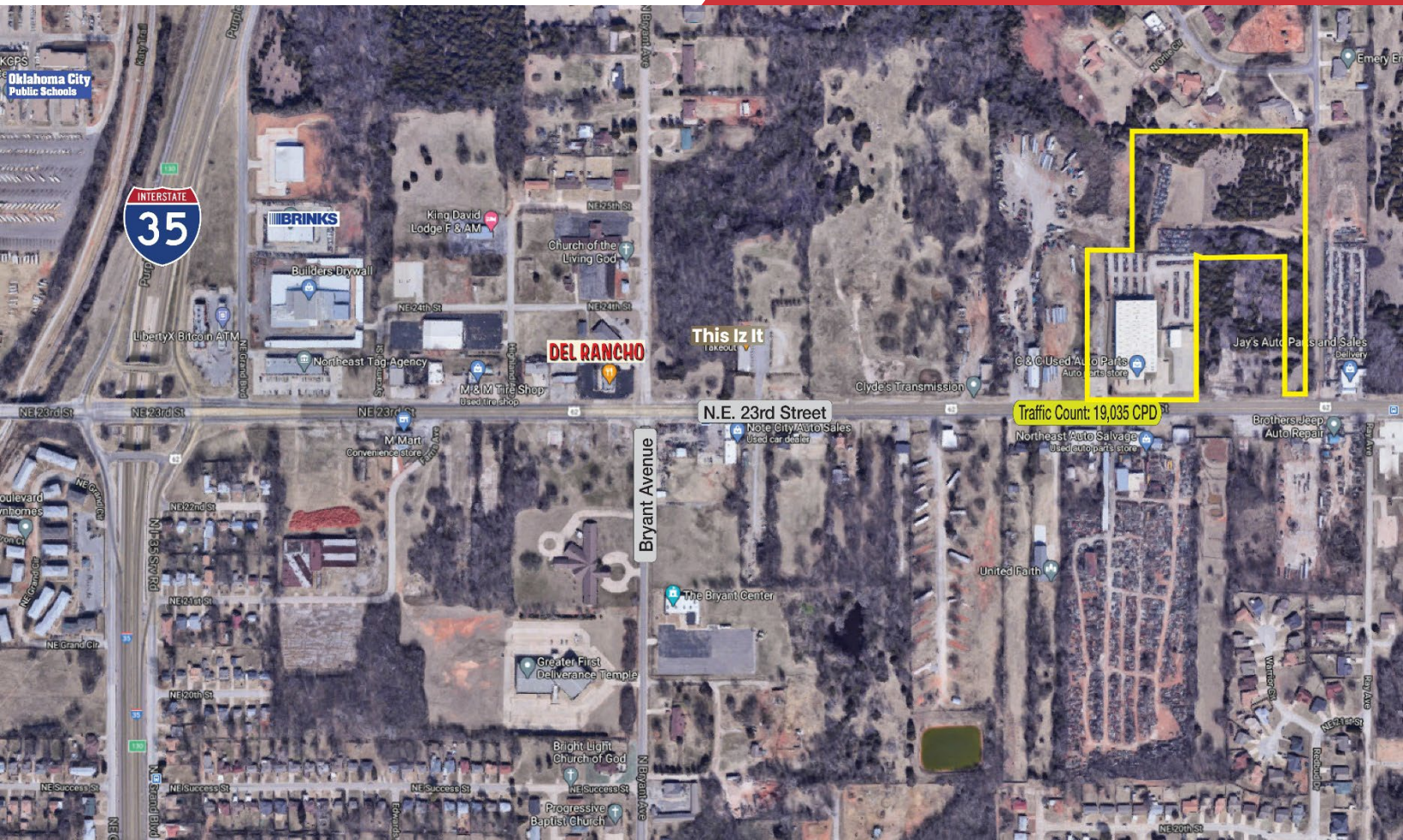
bob@naisullivangroup.com

4045 N.W. 64th Street, Suite 340
Oklahoma City, OK 73116

www.naisullivangroup.com

+1 405 840 0600 OFFICE

+1 405 840 0610 FAX



LOCATION HIGHLIGHTS

- Easy Access to I-35 / I-40
- 23rd Street Frontage
- Easy Access to Downtown

Population	1 Mile: 4,205	3 Miles: 36,050	5 Miles: 130,269
Average Household Income	1 Mile: \$49,449	3 Miles: \$50,109	5 Miles: \$60,762
Total Households	1 Mile: 1,764	3 Miles: 15,542	5 Miles: 54,094

NO WARRANTY OR REPRESENTATION, EXPRESS OR IMPLIED, IS MADE AS TO THE ACCURACY OF THE INFORMATION CONTAINED HEREIN, AND THE SAME IS SUBMITTED SUBJECT TO ERRORS, OMISSIONS, CHANGE OF PRICE, RENTAL OR OTHER CONDITIONS, PRIOR SALE, LEASE OR FINANCING, OR WITHDRAWAL WITHOUT NOTICE, AND OF ANY SPECIAL LISTING CONDITIONS IMPOSED BY OUR PRINCIPALS. NO WARRANTIES OR REPRESENTATIONS ARE MADE AS TO THE CONDITION OF THE PROPERTY OR ANY HAZARDS CONTAINED THEREIN ARE ANY TO BE IMPLIED.

Bob Sullivan, CCIM

+1 405 641 9798

bob@naisullivangroup.com

4045 N.W. 64th Street, Suite 340
Oklahoma City, OK 73116

www.naisullivangroup.com

+1 405 840 0600 OFFICE

+1 405 840 0610 FAX