

# FOR LEASE

Mariah Plaza  
1408-1412 N Main, Guymon, Oklahoma

# RETAIL SPACE

1,100 SF

**Base Rent:** Negotiable  
**Estimated NNN Expenses:** \$2.30 psf



## AREA INFORMATION

- County seat of Texas County.
- Shopping hub for Oklahoma Panhandle, northwest Texas and southwest Kansas.
- Largest city in the 6,000 square mile panhandle.
- Rapidly growing city and regional markets due to gaming, wind energy and Seaboard.
- The city's largest employer, Seaboard, operates at double shift capacity with 3,100 employees having an annual payroll excess of \$94 million.
- Oklahoma Panhandle State University is located in nearby Goodwell, OK.
- **Golden Mesa Casino** - 42,000 SF casino just 3 miles southwest of Guymon. Opened in 2019.

**City of Guymon**  
 2021 Population.....13,257  
 Average Household Income..... \$61,246

**Market Trade Area**  
 Population.....51,345  
 Average Household Income..... \$63,913  
 Unemployment.....3.96%



## FOR MORE INFORMATION:

**Troy Humphrey**  
405.219.7500

**Sarah Ingle**  
918.801.8136

thumphrey@LRCRE.com

single@LRCRE.com

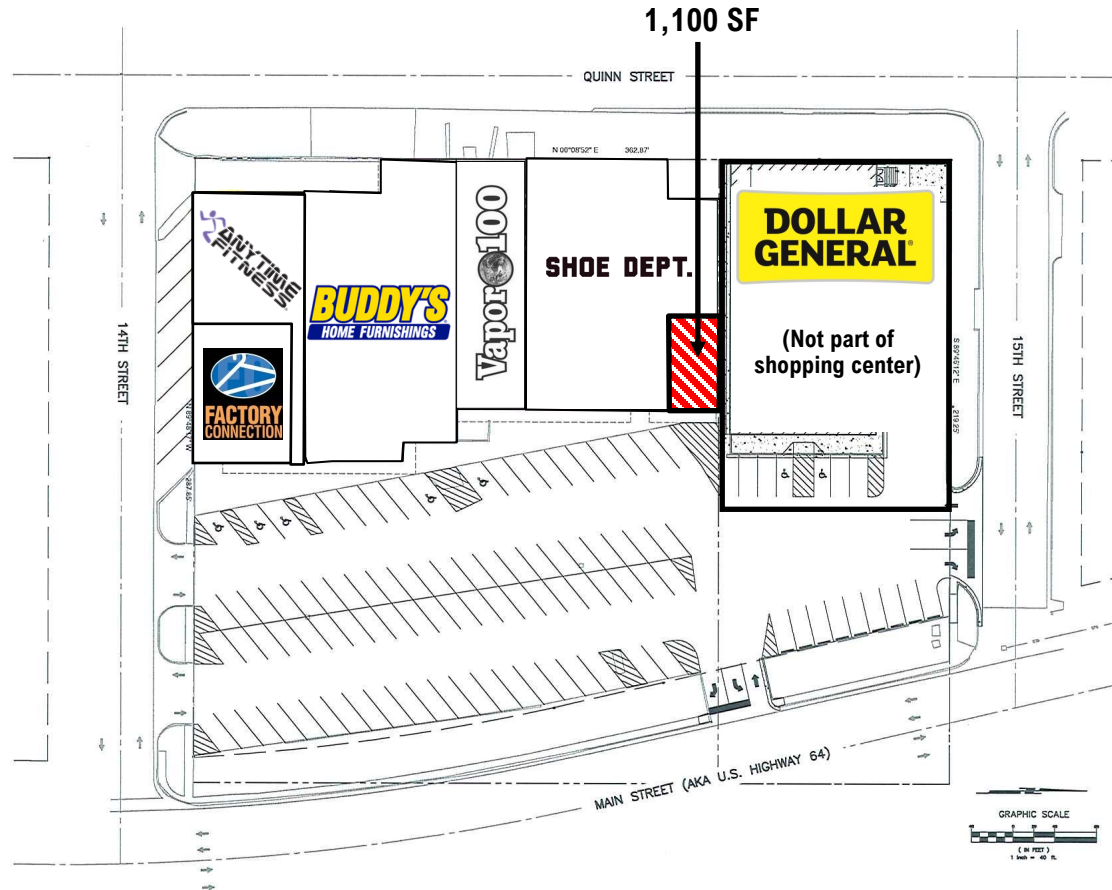
114 N.W. 6<sup>th</sup> Street, Suite 206  
Oklahoma City, OK 73102  
Office: 405.231.5700  
Facsimile: 405.231.5701  
www.LRCRE.com

# FOR LEASE

Mariah Plaza  
1408-1412 N Main, Guymon, Oklahoma

# RETAIL SPACE

1,100 SF



## FOR MORE INFORMATION:

Troy Humphrey

405.219.7500

thumphrey@LRCRE.com

Sarah Ingle

918.801.8136

single@LRCRE.com

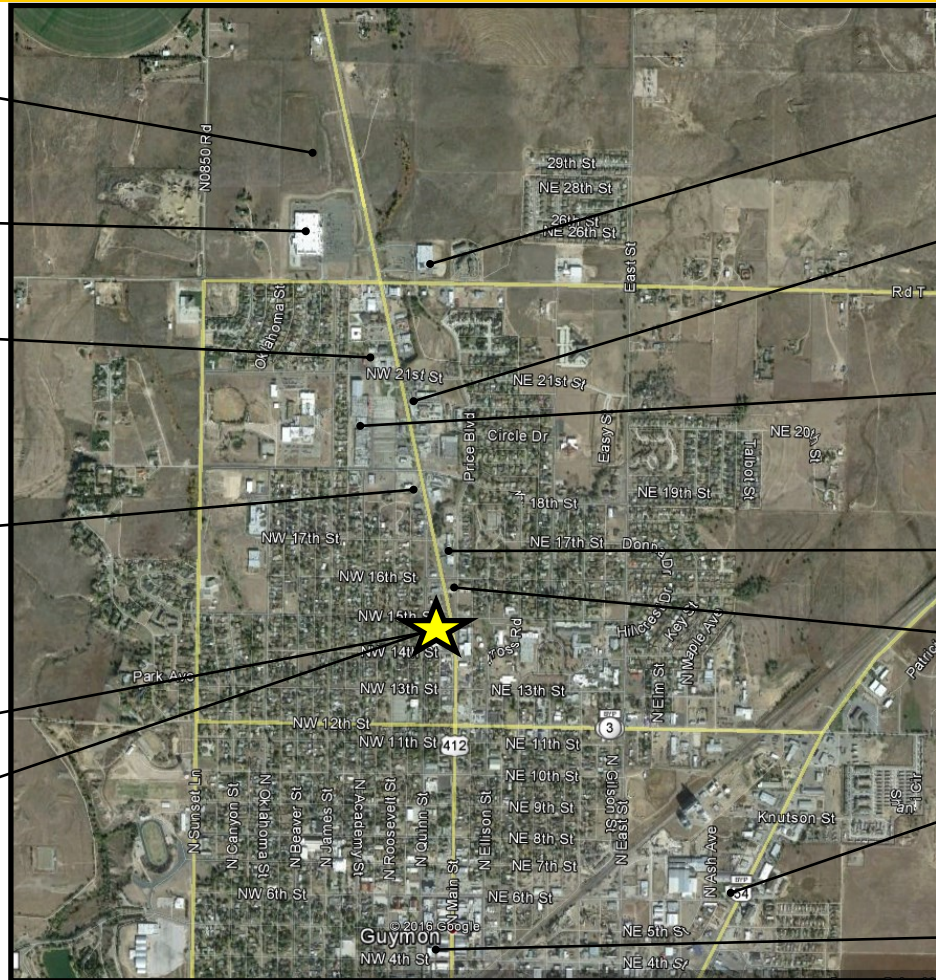
114 N.W. 6<sup>th</sup> Street, Suite 206  
Oklahoma City, OK 73102  
Office: 405.231.5700  
Facsimile: 405.231.5701  
www.LRCRE.com

# FOR LEASE

Mariah Plaza  
1408-1412 N Main, Guymon, Oklahoma

# RETAIL SPACE

1,100 SF



## FOR MORE INFORMATION:

Troy Humphrey

405.219.7500

thumphrey@LRCRE.com

Sarah Ingle

918.801.8136

single@LRCRE.com

114 N.W. 6<sup>th</sup> Street, Suite 206

Oklahoma City, OK 73102

Office: 405.231.5700

Facsimile: 405.231.5701

www.LRCRE.com



The information above is believed to be accurate and reliable but is not warranted and may change without notice. Land Run Commercial Real Estate Advisors, LLC makes no guarantees, warranties or representations about the property and recommends tenants independent investigation as to the accuracy thereof.