

FOR LEASE

Mariah Plaza
1408-1412 N Main, Guymon, Oklahoma

RETAIL SPACE

1,100 — 10,382 SF

Landlord willing to subdivide/combine suites.

Base Rent: Negotiable

Estimated NNN Expenses: \$2.30 psf

AREA INFORMATION

- County seat of Texas County.
- Shopping hub for Oklahoma Panhandle, northwest Texas and southwest Kansas.
- Largest city in the 6,000 square mile panhandle.
- Rapidly growing city and regional markets due to gaming, wind energy and Seaboard.
- The city's largest employer, Seaboard, operates at double shift capacity with 3,100 employees having an annual payroll excess of \$94 million.
- Oklahoma Panhandle State University is located in nearby Goodwell, OK.
- **Golden Mesa Casino** - 42,000 SF casino just 3 miles southwest of Guymon. Opened in 2019.



City of Guymon

2021 Population..... 13,257
Average HH Income \$61,246

Market Trade Area

Population 51,345
Average HH Income \$63,913
Unemployment..... 3.96%



FOR MORE INFORMATION:

Troy Humphrey

405.219.7500

thumphrey@LRCRE.com

Sarah Ingle

918.801.8136

single@LRCRE.com

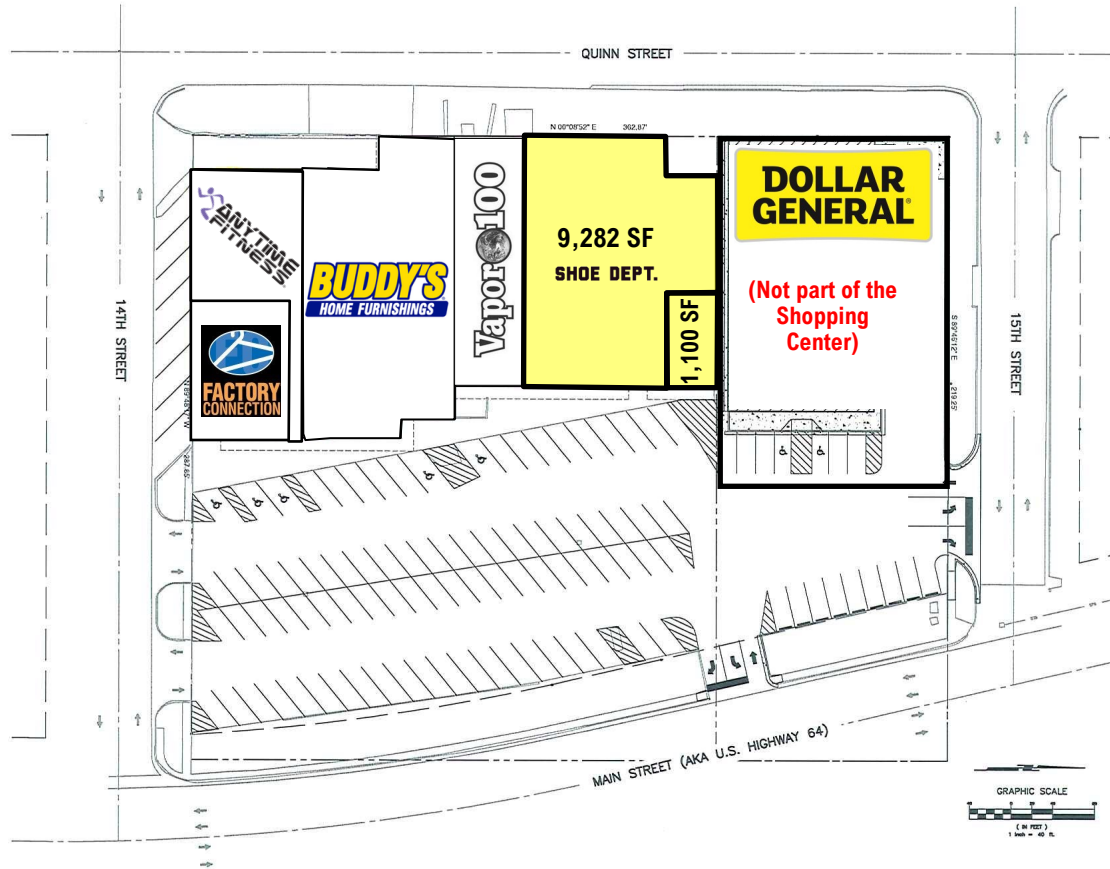
114 N.W. 6th Street, Suite 206
Oklahoma City, OK 73102
Office: 405.231.5700
Facsimile: 405.231.5701
www.LRCRE.com

FOR LEASE

Mariah Plaza
1408-1412 N Main, Guymon, Oklahoma

RETAIL SPACE

1,100 — 10,382 SF



**Available Spaces:
10,382 SF total**



FOR MORE INFORMATION:

Troy Humphrey

405.219.7500

thumphrey@LRCRE.com

Sarah Ingle

918.801.8136

single@LRCRE.com

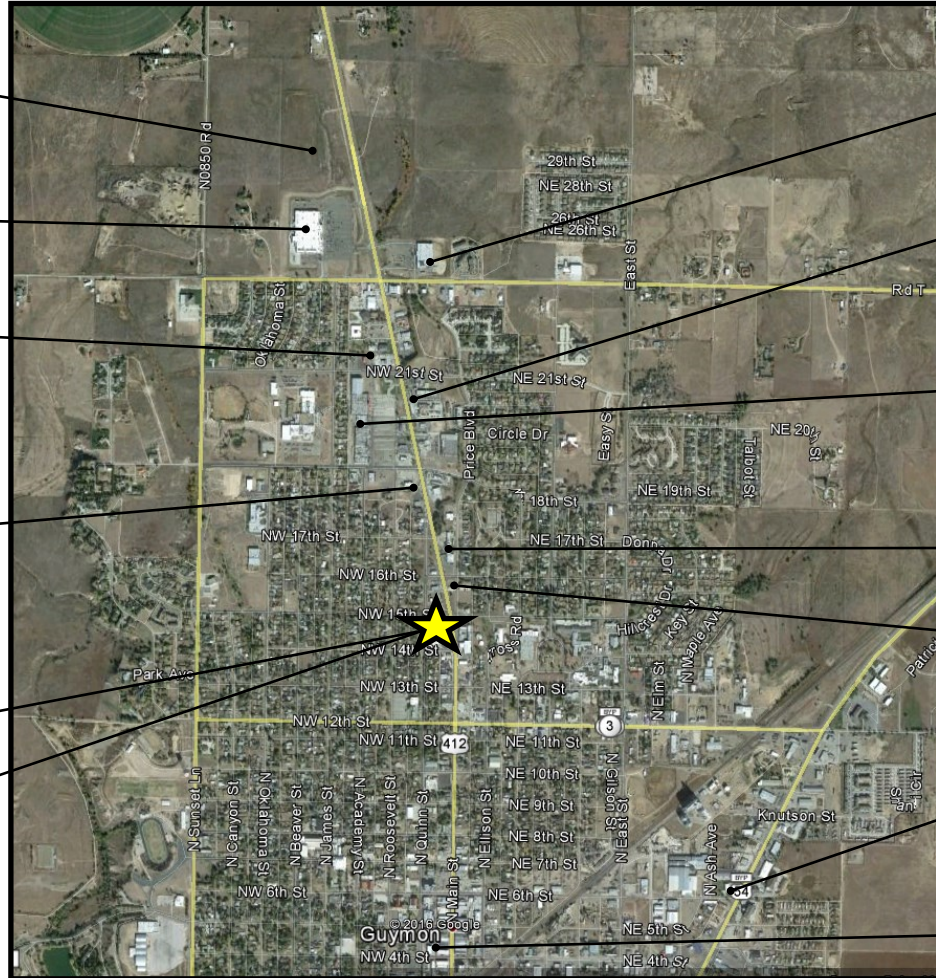
114 N.W. 6th Street, Suite 206
Oklahoma City, OK 73102
Office: 405.231.5700
Facsimile: 405.231.5701
www.LRCRE.com

FOR LEASE

Mariah Plaza
1408-1412 N Main, Guymon, Oklahoma

RETAIL SPACE

1,100 — 10,382 SF



FOR MORE INFORMATION:

Troy Humphrey

405.219.7500

thumphrey@LRCRE.com

Sarah Ingle

918.801.8136

single@LRCRE.com

114 N.W. 6th Street, Suite 206

Oklahoma City, OK 73102

Office: 405.231.5700

Facsimile: 405.231.5701

www.LRCRE.com