

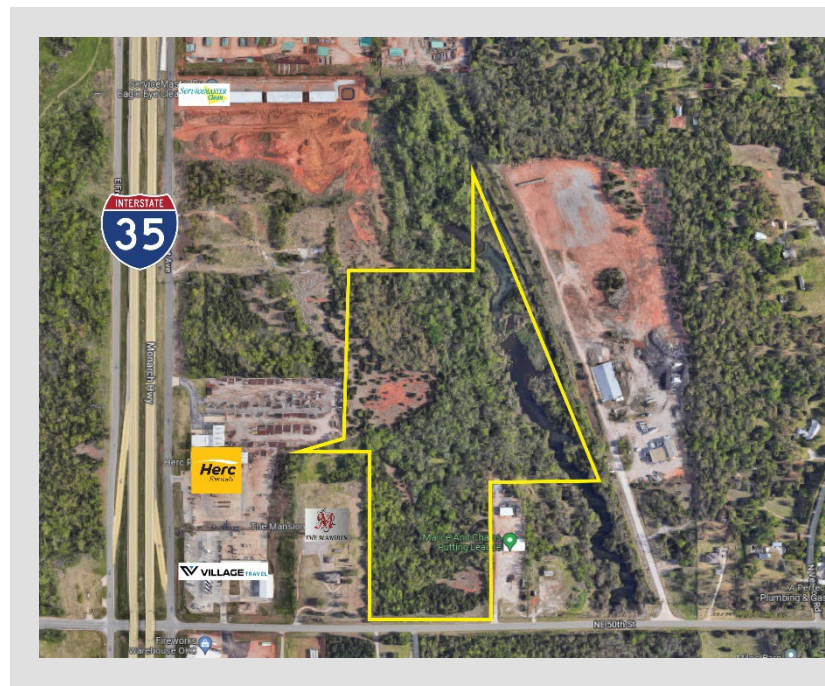


## 3203 N.E. 50<sup>th</sup> Street

Oklahoma City, Oklahoma 73121

### PROPERTY HIGHLIGHTS

- 31.18 Acres, I-2 Zoning
- Just East of I-35 on N.E. 50<sup>th</sup> Street
- Easy On/Off I-35
- Perfect Location for Warehousing, Trucking, Distribution



NO WARRANTY OR REPRESENTATION, EXPRESS OR IMPLIED, IS MADE AS TO THE ACCURACY OF THE INFORMATION CONTAINED HEREIN, AND THE SAME IS SUBMITTED SUBJECT TO ERRORS, OMISSIONS, CHANGE OF PRICE, RENTAL OR OTHER CONDITIONS, PRIOR SALE, LEASE OR FINANCING, OR WITHDRAWAL WITHOUT NOTICE, AND OF ANY SPECIAL LISTING CONDITIONS IMPOSED BY OUR PRINCIPALS NO WARRANTIES OR REPRESENTATIONS ARE MADE AS TO THE CONDITION OF THE PROPERTY OR ANY HAZARDS CONTAINED THEREIN ARE ANY TO BE IMPLIED.

**Irmon Gray**  
+1 405 474 7286  
irmon@naisullivangroup.com

4045 N.W. 64<sup>th</sup> Street, Suite 340  
Oklahoma City, OK 73116  
[www.naisullivangroup.com](http://www.naisullivangroup.com)

**Darryl Meason**  
+1 405 205 9440  
darryl@naisullivangroup.com

+1 405 840 0600 OFFICE  
+1 405 840 0610 FAX





**Legend**

- OKC Legal Boundary
- + Water Hydrant
- Abandoned, Oklahoma City
- Active, Oklahoma City
- SStandardManhole
- Sewer Lateral Line
- Abandoned, Oklahoma City
- Active, Oklahoma City
- County Parcels 2018
- City Boundaries**
- CITYNAME**
- Forest Park
- Lake Alumna
- Unincorporated

Neither the City nor any of its trusts nor any of its employees, officers, or agents warrant or represent that the information or data on this document is accurate or appropriate for use or re-use for any purpose. The user of this document assumes the sole duty and full responsibility for the verification of the information and data contained therein. Any use of or reliance upon this document or the information or data contained therein is solely, totally, and exclusively at the users own risk.



Population	1 Mile: 521	3 Miles: 22,372	5 Miles: 89,624
Average Household Income	1 Mile: \$104,883	3 Miles: \$54,341	5 Miles: \$71,123
Total Households	1 Mile: 208	3 Miles: 9,534	5 Miles: 39,560

NO WARRANTY OR REPRESENTATION, EXPRESS OR IMPLIED, IS MADE AS TO THE ACCURACY OF THE INFORMATION CONTAINED HEREIN, AND THE SAME IS SUBMITTED SUBJECT TO ERRORS, OMISSIONS, CHANGE OF PRICE, RENTAL OR OTHER CONDITIONS, PRIOR SALE, LEASE OR FINANCING, OR WITHDRAWAL WITHOUT NOTICE, AND OF ANY SPECIAL LISTING CONDITIONS IMPOSED BY OUR PRINCIPALS NO WARRANTIES OR REPRESENTATIONS ARE MADE AS TO THE CONDITION OF THE PROPERTY OR ANY HAZARDS CONTAINED THEREIN ARE ANY TO BE IMPLIED.

**Irmon Gray**  
+1 405 474 7286  
irmon@naisullivangroup.com  
4045 N.W. 64<sup>th</sup> Street, Suite 340  
Oklahoma City, OK 73116  
[www.naisullivangroup.com](http://www.naisullivangroup.com)

**Darryl Meason**  
+1 405 205 9440  
darryl@naisullivangroup.com  
+1 405 840 0600 OFFICE  
+1 405 840 0610 FAX