



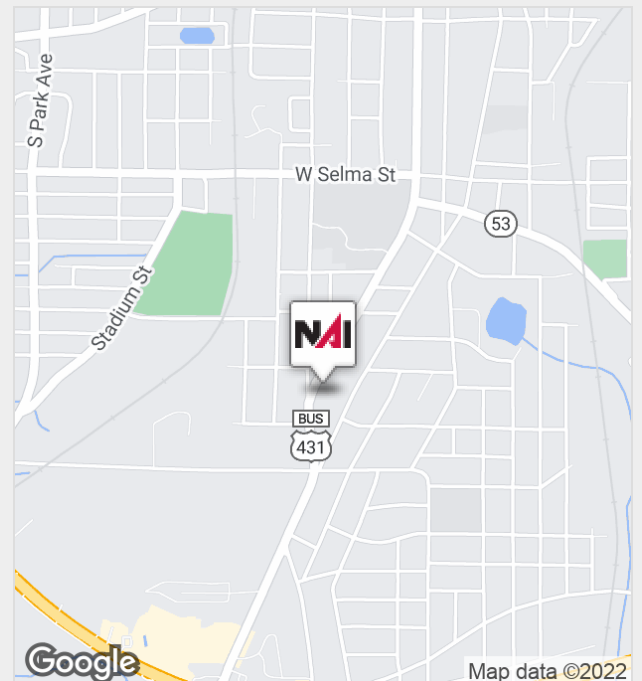
1600-1700 South Oates Street

Dothan, Alabama 36301

Property Features

- 1.72 Acres with approx. 430SF road frontage on South Oates St.
- Parcel #: 09-07-25-3-008-020.000
- Parcel #: 09-07-25-3-008-021.000
- Parcel #: 09-07-25-3-008-019.000
- Parcel#: 09-07-25-3-008-018.000
- Located on South Oates Street approximately 1 mile South of Dothan High School

Sale Price: \$299,000



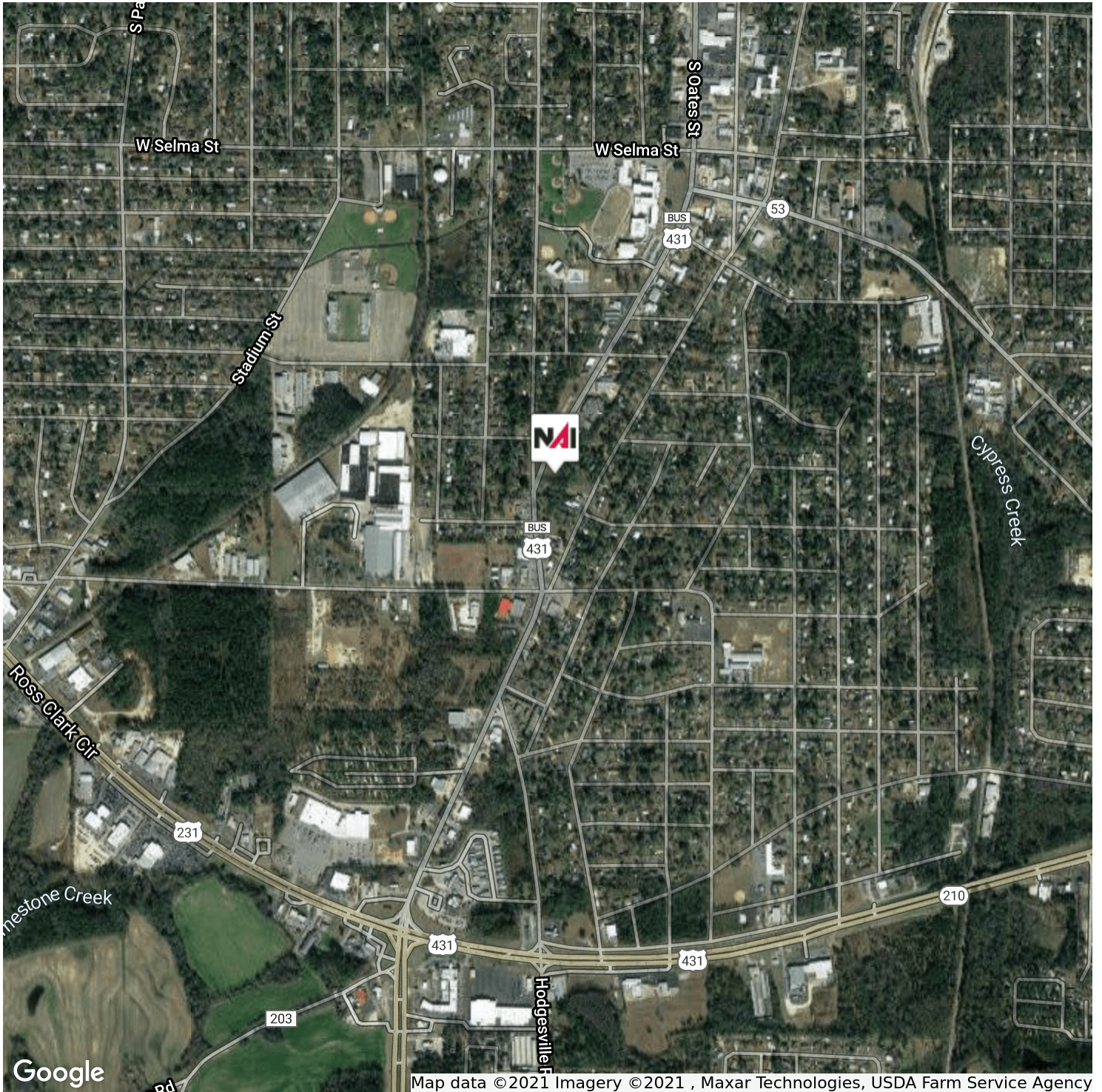
For more information:

Kenny Whatley

C: 334 596 7890 • kwhatley@talcor.com

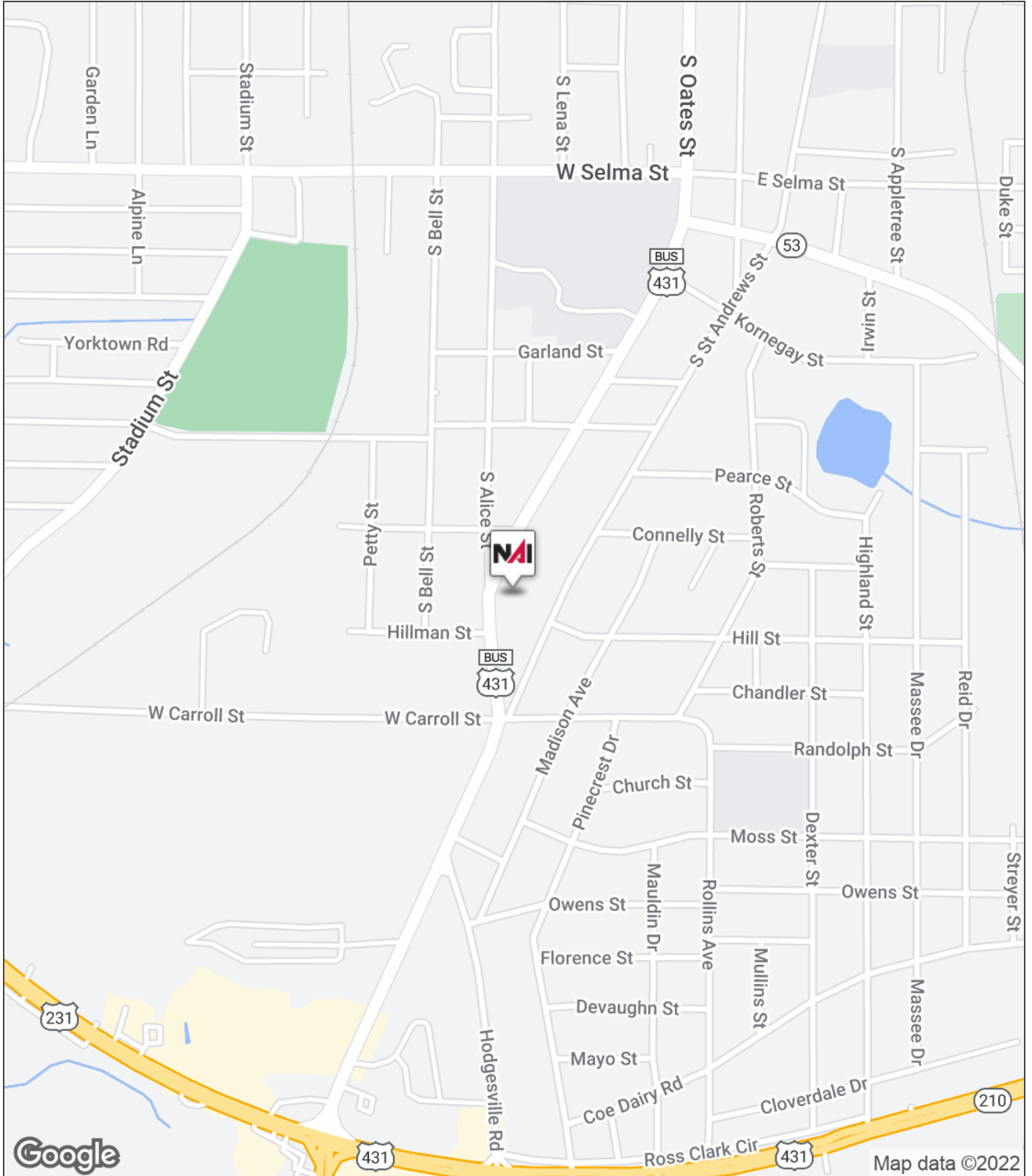
For Sale

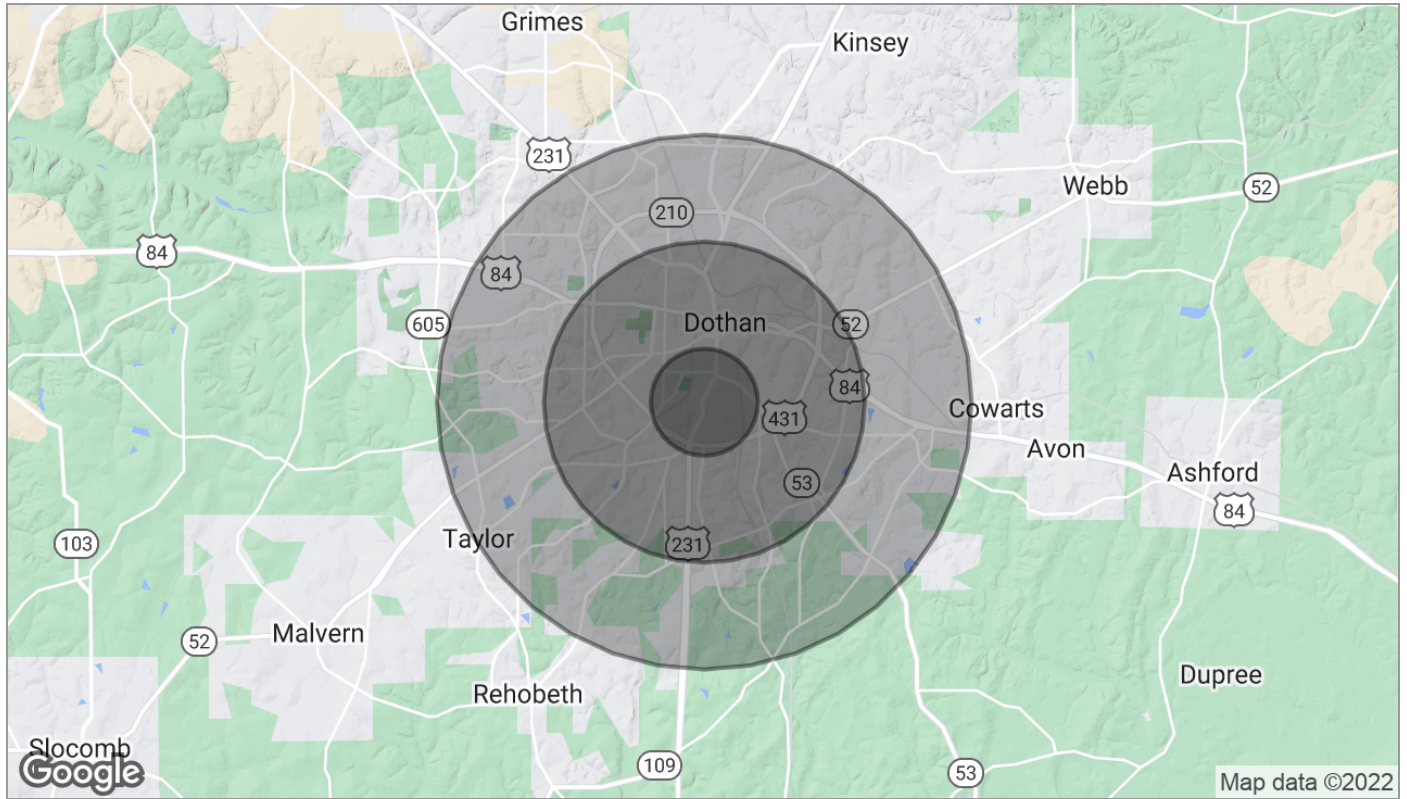
Land



For Sale

Land





Population	1 Mile	3 Miles	5 Miles
TOTAL POPULATION	5,216	32,754	58,394
MEDIAN AGE	37.0	37.6	37.6
MEDIAN AGE (MALE)	33.4	34.9	35.8
MEDIAN AGE (FEMALE)	39.9	39.7	39.1
Households & Income	1 Mile	3 Miles	5 Miles
TOTAL HOUSEHOLDS	2,064	12,801	22,753
# OF PERSONS PER HH	2.5	2.6	2.6
AVERAGE HH INCOME	\$37,987	\$47,468	\$53,898
AVERAGE HOUSE VALUE	\$80,666	\$142,124	\$160,598
Race	1 Mile	3 Miles	5 Miles
% WHITE	59.7%	58.8%	63.2%
% BLACK	34.7%	36.6%	32.2%
% ASIAN	1.2%	1.2%	1.1%
% HAWAIIAN	0.0%	0.0%	0.0%
% INDIAN	0.8%	0.5%	0.4%
% OTHER	2.4%	1.5%	1.5%
Ethnicity	1 Mile	3 Miles	5 Miles
% HISPANIC	4.1%	2.8%	2.9%

* Demographic data derived from 2020 ACS - US Census