

302 PEARMAN DAIRY RD

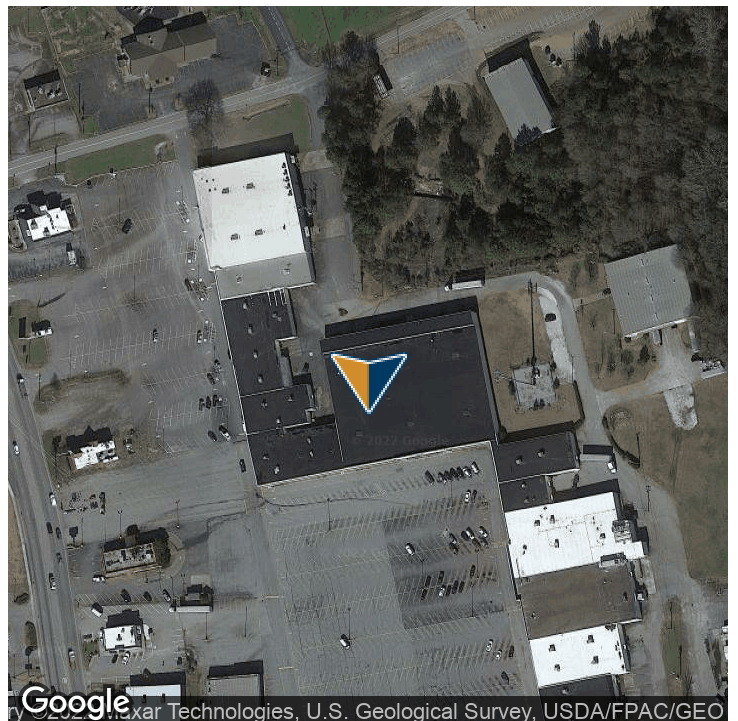
ANDERSON, SC 29625

PROPERTY SUMMARY



PROPERTY DESCRIPTION

This property stands out boldly on the extremely busy northeast corner of W Whitner St and Pearman Dairy Rd with up to 5331 Sq Ft available. With higher than average ceilings and an open floor plan, this building offers limitless custom interior and exterior opportunities.



OFFERING SUMMARY

Lease Rate:	Negotiable
Number of Units:	1
Available SF:	5,331 SF
Building Size:	5,331 SF

SPACES	LEASE RATE	SPACE SIZE
302 Pearman Dairy Rd	Negotiable	5,331 SF

DEMOGRAPHICS	1 MILE	3 MILES	5 MILES
Total Households	1,309	11,544	26,424

Presented By:

Legacy Commercial Property

847.904.9200

info@legacypro.com



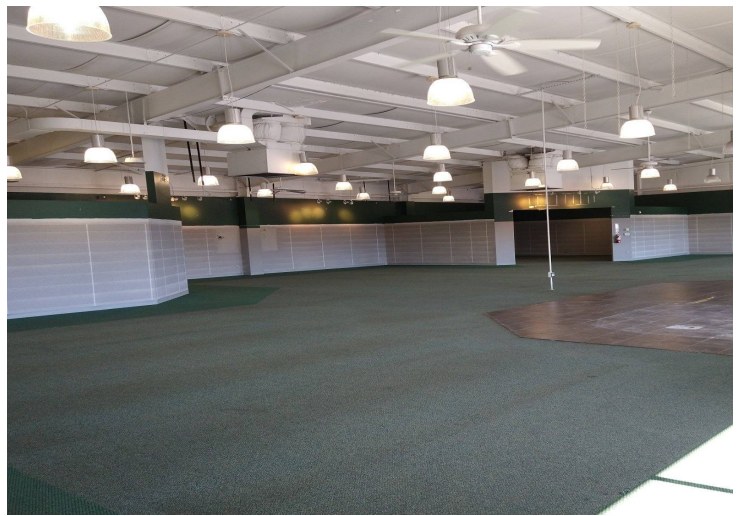
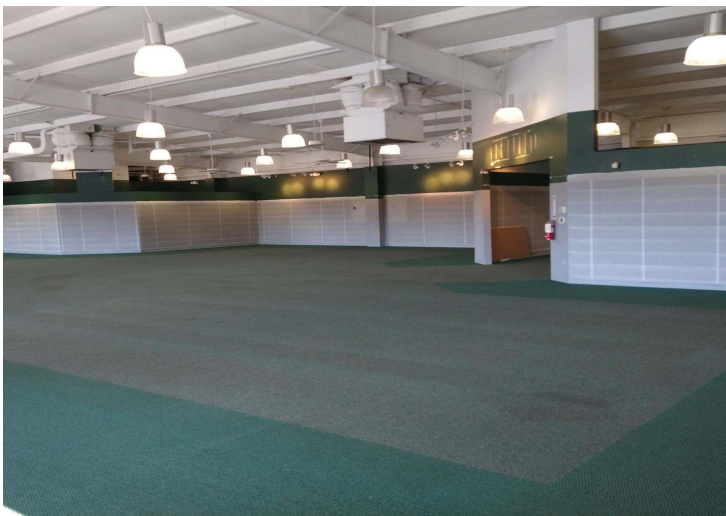
LEGACY
COMMERCIAL PROPERTY

2500 Lehigh Ave
Glenview, IL 60026
<http://legacypro.com>

302 PEARMAN DAIRY RD

ANDERSON, SC 29625

ADDITIONAL PHOTOS



Presented By:

Legacy Commercial Property

847.904.9200

info@legacypro.com



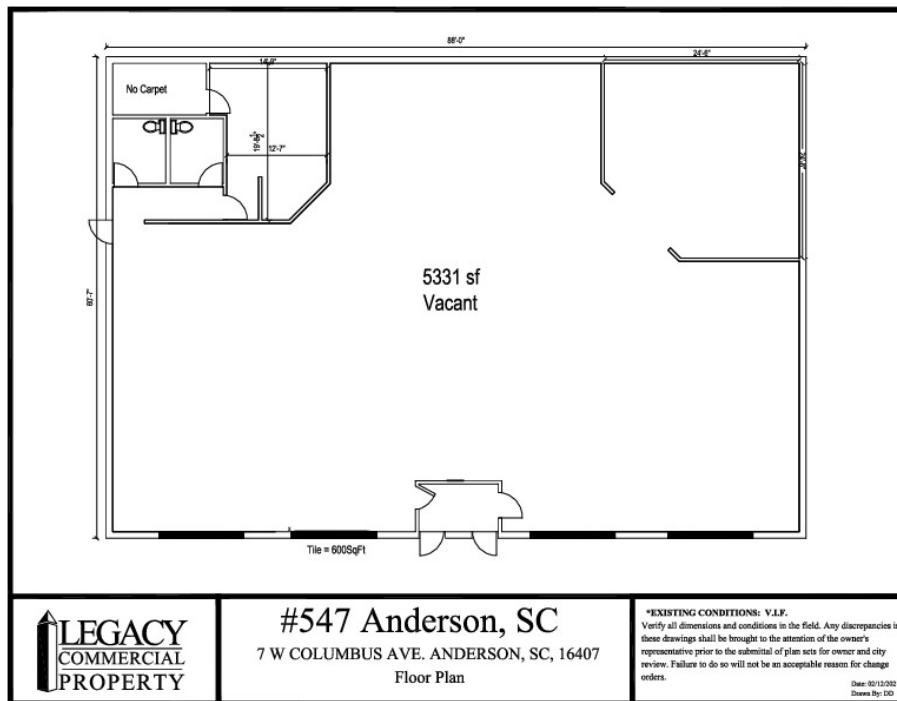
LEGACY
COMMERCIAL PROPERTY

2500 Lehigh Ave
Glenview, IL 60026
<http://legacypro.com>

302 PEARMAN DAIRY RD

ANDERSON, SC 29625

SITE PLANS



Presented By:

Legacy Commercial Property

847.904.9200

info@legacypro.com



LEGACY
COMMERCIAL PROPERTY

2500 Lehigh Ave
Glenview, IL 60026
<http://legacypro.com>

302 PEARMAN DAIRY RD

ANDERSON, SC 29625

RENT ROLL

TENANT NAME	UNIT NUMBER	UNIT SIZE (SF)	LEASE START	LEASE END	ANNUAL RENT	% OF GLA	PRICE PER SF/YR
Vacant	Bldg	5,331			\$0	100.0	\$0.00
Totals/Averages		5,331			\$0		\$0.00

Presented By:

Legacy Commercial Property

847.904.9200

info@legacypro.com



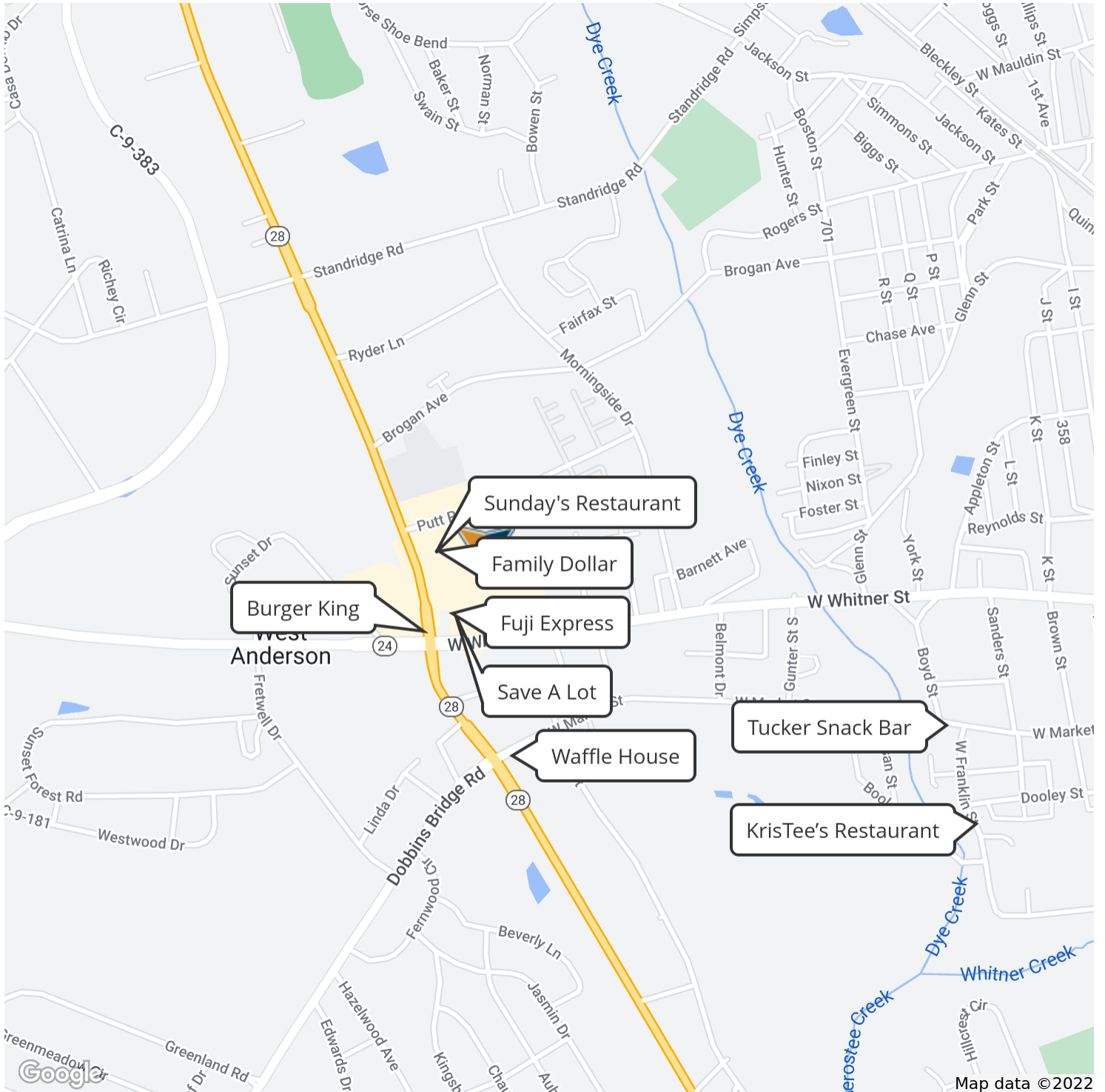
LEGACY
COMMERCIAL PROPERTY

2500 Lehigh Ave
Glenview, IL 60026
<http://legacypro.com>

302 PEARMAN DAIRY RD

ANDERSON, SC 29625

RETAILER MAP



Presented By:

Legacy Commercial Property

847.904.9200

info@legacypro.com



LEGACY

COMMERCIAL PROPERTY

2500 Lehigh Ave
Glenview, IL 60026
<http://legacypro.com>