

7666 MORGAN ROAD

LIVERPOOL, NY 13090

PROPERTY SUMMARY



PROPERTY DESCRIPTION

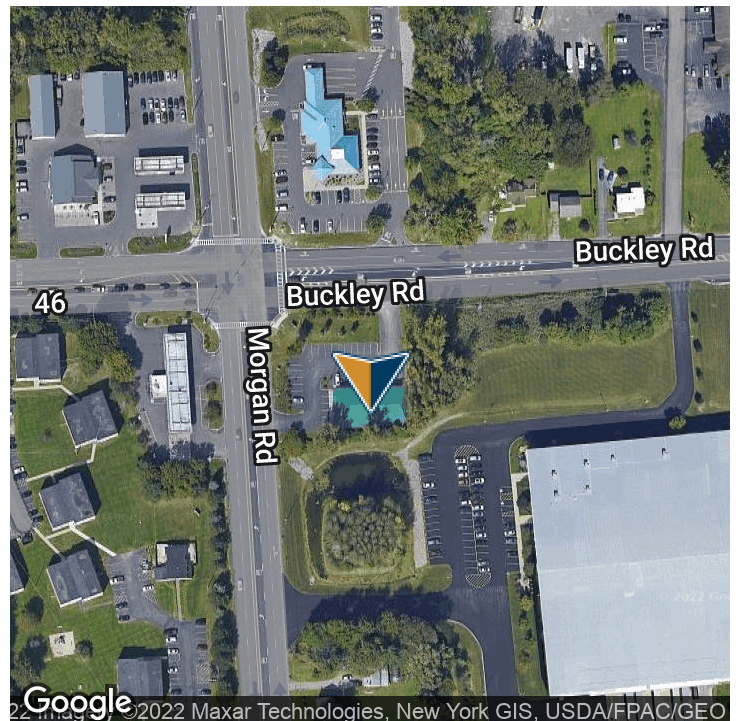
Strong visibility on the southeast corner of Buckley Rd and Morgan Rd with up to 4950 Sq Ft available

OFFERING SUMMARY

| | |
|----------------|------------|
| Lease Rate: | Negotiable |
| Available SF: | 4,950 SF |
| Lot Size: | 0.86 Acres |
| Building Size: | 4,950 SF |

| SPACES | LEASE RATE | SPACE SIZE |
|-------------------|------------|------------|
| FAMILY VIDEO #527 | Negotiable | 4,950 SF |

| DEMOGRAPHICS | 1 MILE | 3 MILES | 5 MILES |
|-------------------|----------|----------|----------|
| Total Households | 2,507 | 23,405 | 45,367 |
| Total Population | 6,443 | 57,117 | 112,558 |
| Average HH Income | \$69,269 | \$71,127 | \$69,211 |



Presented By:

Legacy Commercial Property

847.904.9200

info@legacypro.com



LEGACY
COMMERCIAL PROPERTY

2500 Lehigh Ave
Glenview, IL 60026
<http://legacypro.com>

7666 MORGAN ROAD

LIVERPOOL, NY 13090

ADDITIONAL PHOTOS



Presented By:

Legacy Commercial Property

847.904.9200

info@legacypro.com



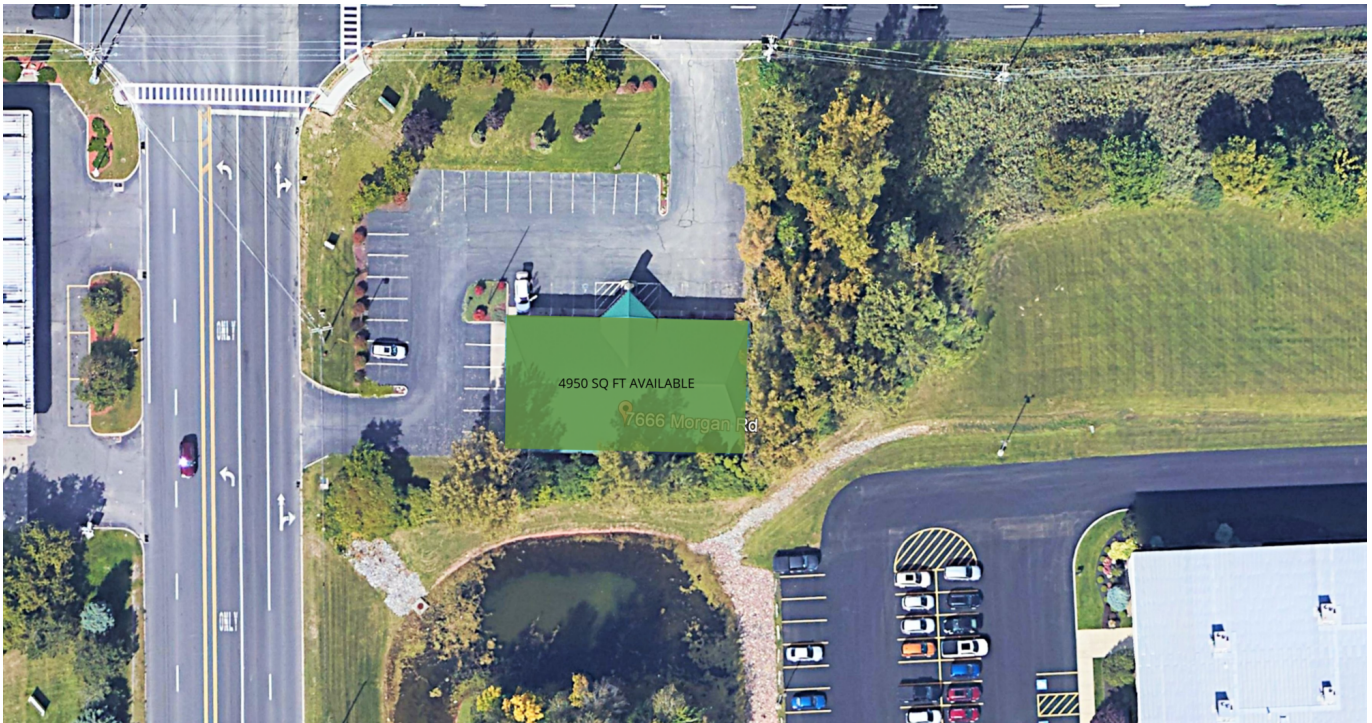
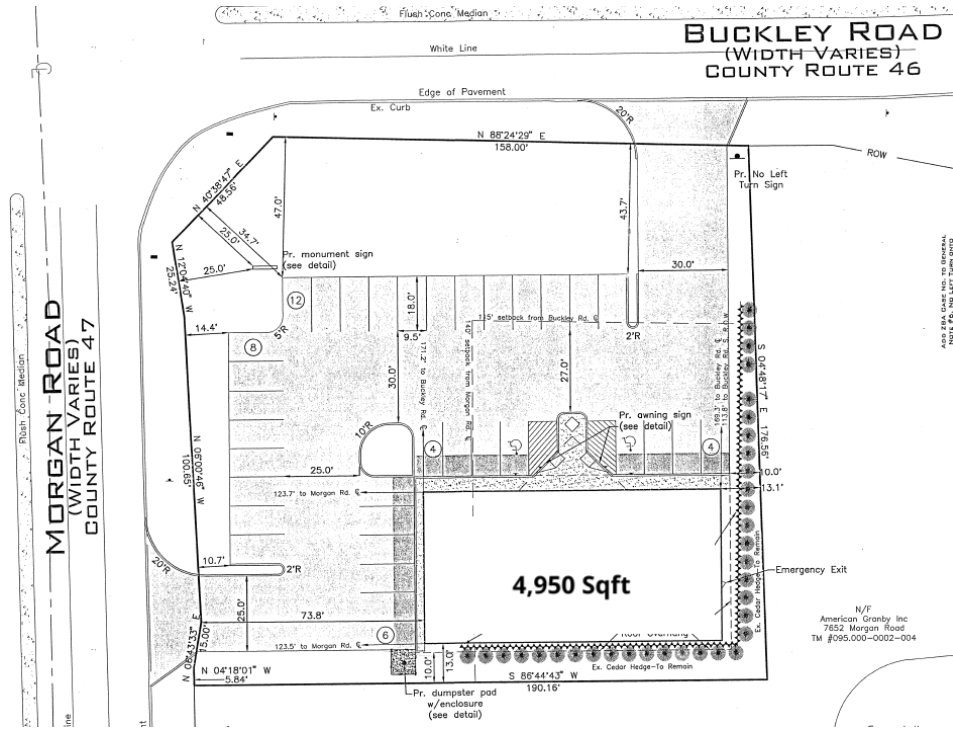
LEGACY
COMMERCIAL PROPERTY

2500 Lehigh Ave
Glenview, IL 60026
<http://legacypro.com>

7666 MORGAN ROAD

LIVERPOOL, NY 13090

SITE PLANS



Presented By:
Legacy Commercial Property
847.904.9200
info@legacypro.com



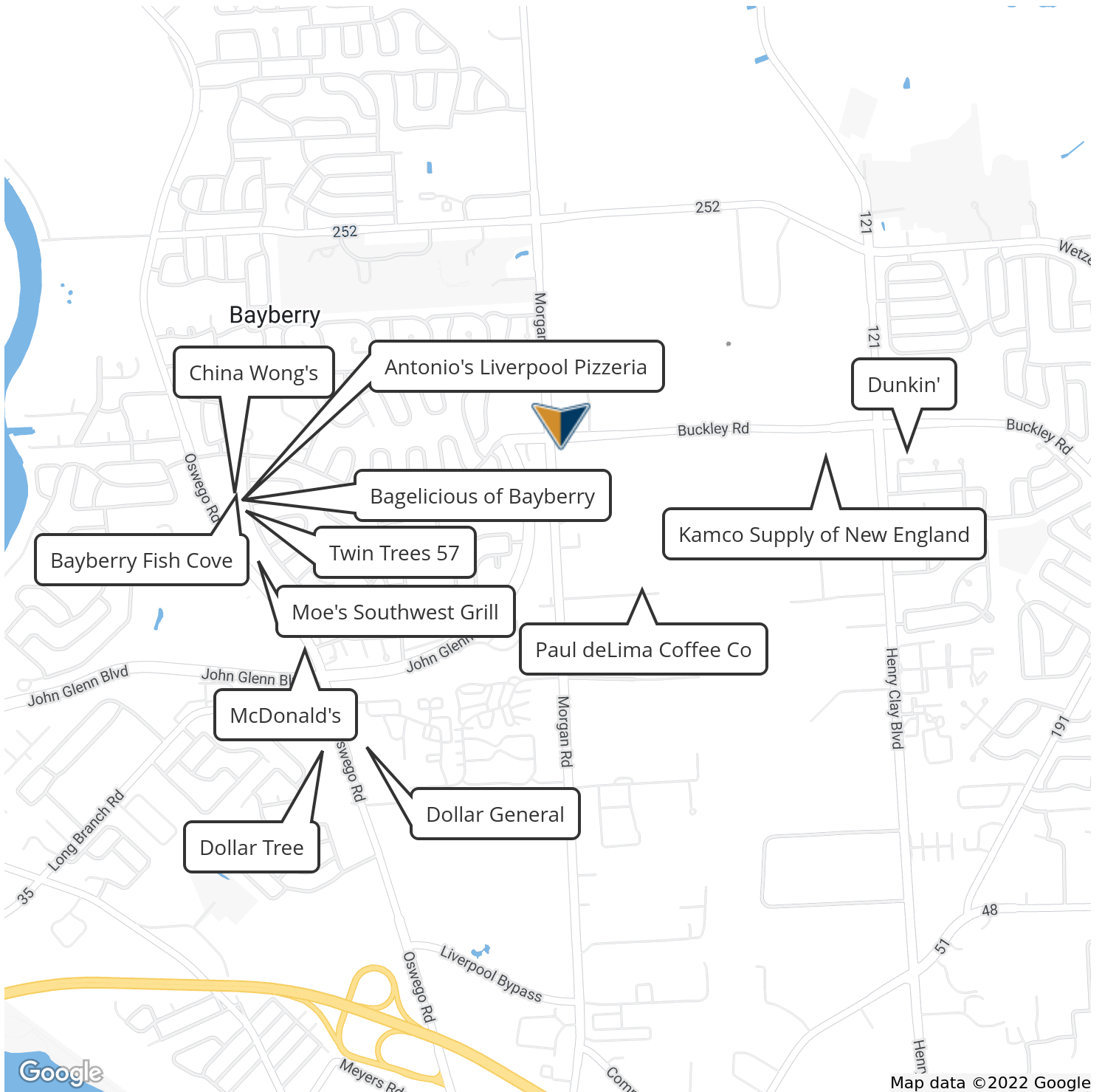
LEGACY
COMMERCIAL PROPERTY

2500 Lehigh Ave
Glenview, IL 60026
http://legacypro.com

7666 MORGAN ROAD

LIVERPOOL, NY 13090

RETAILER MAP



Presented By:

Legacy Commercial Property

847.904.9200

info@legacypro.com



LEGACY
COMMERCIAL PROPERTY

2500 Lehigh Ave
Glenview, IL 60026
<http://legacypro.com>