

# FOR SALE

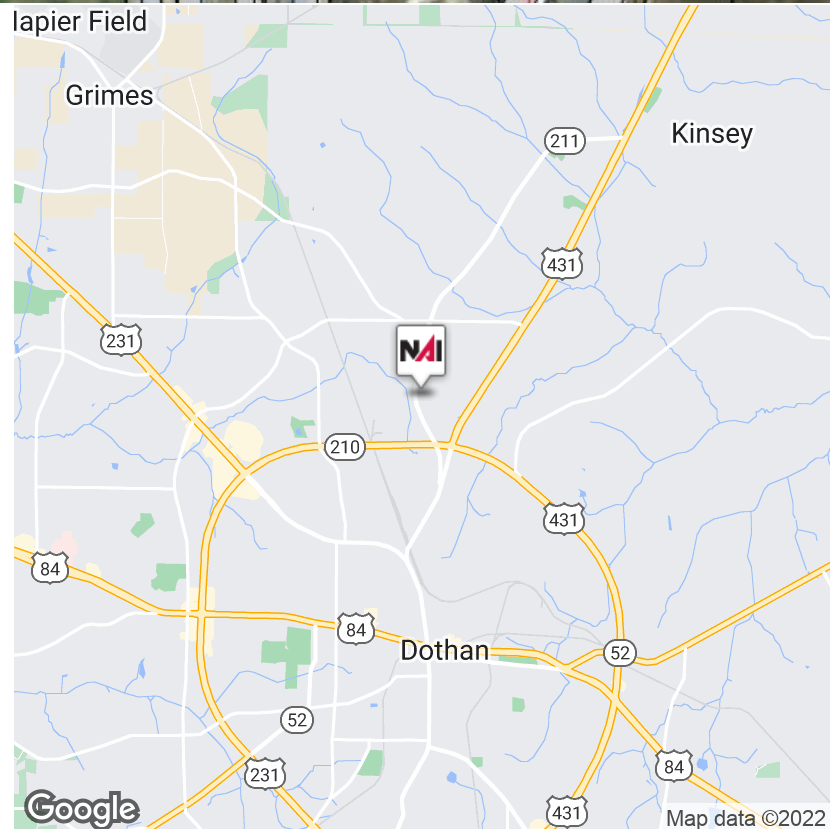
300 Murray Rd Dothan, AL 36303

# NAI TALCOR



## Industrial Land | 39+- acres

- 39+- acres for light industrial, office or business.
- Prime property in opportunity zone.
- Sewer and electric accessible on site.
- Will sell or available for 1031 exchange.
- Close to Westgate Industrial Park.
- Close to major thoroughfares US 231, US 431 and Ross Clark Circle.
- Will subdivide, priced accordingly.



✉ **Kenny Whatley**  
+1 334 596 7890  
kwhatley@talcor.com

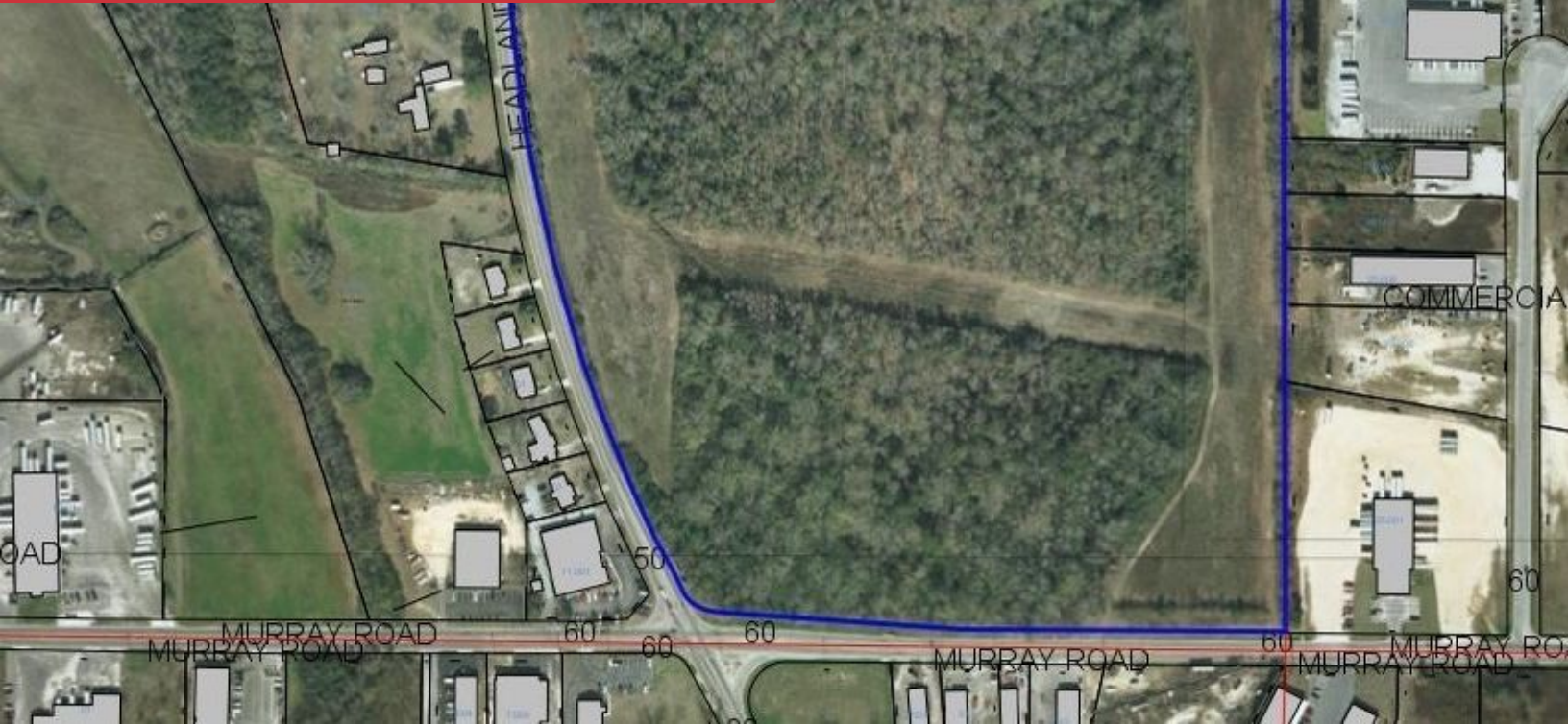
No Warranty Or Representation, Express Or Implied, Is Made As To The Accuracy Of The Information Contained Herein, And The Same Is Submitted Subject To Errors, Omissions, Change Of Price, Rental Or Other Conditions, Prior Sale, Lease Or Financing, Or Withdrawal Without Notice, And Of Any Special Listing Conditions Imposed By Our Principals No Warranties Or Representations Are Made As To The Condition Of The Property Or Any Hazards Contained Therein Are Any To Be Implied.



**NAI TALCOR**  
107 Hidden Glen Way  
talcor.com

# FOR SALE

300 Murray Rd Dothan, AL 36303



 **Kenny Whatley**  
+1 334 596 7890  
kwhatley@talcor.com

No Warranty Or Representation, Express Or Implied, Is Made As To The Accuracy Of The Information Contained Herein, And The Same Is Submitted Subject To Errors, Omissions, Change Of Price, Rental Or Other Conditions, Prior Sale, Lease Or Financing, Or Withdrawal Without Notice, And Of Any Special Listing Conditions Imposed By Our Principals No Warranties Or Representations Are Made As To The Condition Of The Property Or Any Hazards Contained Therein Are Any To Be Implied.

**NAITALCOR**