

1263 BURTON SW

WYOMING, MI 49509

PROPERTY SUMMARY



PROPERTY DESCRIPTION

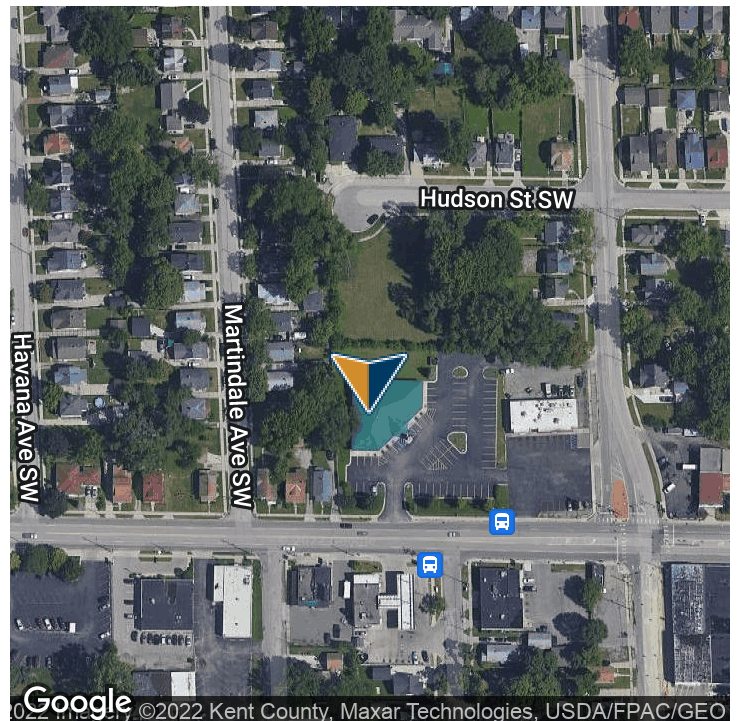
Strong visibility on the northeast corner of Burton SW and Martindale Ave SW with up to 7000 Sq Ft available

OFFERING SUMMARY

Lease Rate:	Negotiable
Number of Units:	1
Available SF:	7,040 SF
Building Size:	7,040 SF

SPACES	LEASE RATE	SPACE SIZE
1263 Burton St SW	Negotiable	7,040 SF

DEMOGRAPHICS	1 MILE	3 MILES	5 MILES
Total Households	4,259	37,513	103,985
Total Population	13,271	107,053	272,577
Average HH Income	\$47,644	\$44,751	\$48,433



Presented By:

Legacy Commercial Property

847.904.9200

info@legacypro.com



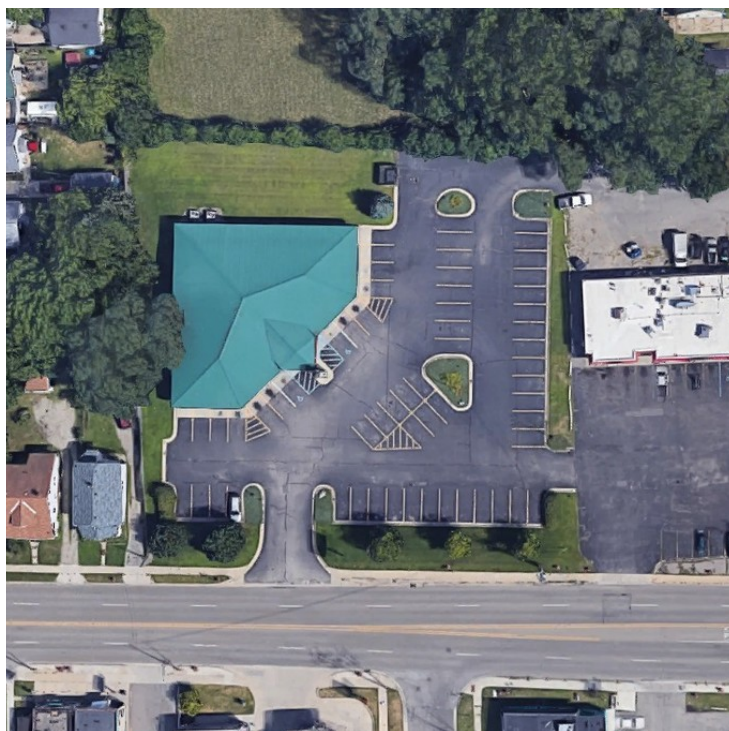
LEGACY
COMMERCIAL PROPERTY

2500 Lehigh Ave
Glenview, IL 60026
http://legacypro.com

1263 BURTON SW

WYOMING, MI 49509

ADDITIONAL PHOTOS



Presented By:

Legacy Commercial Property

847.904.9200

info@legacypro.com



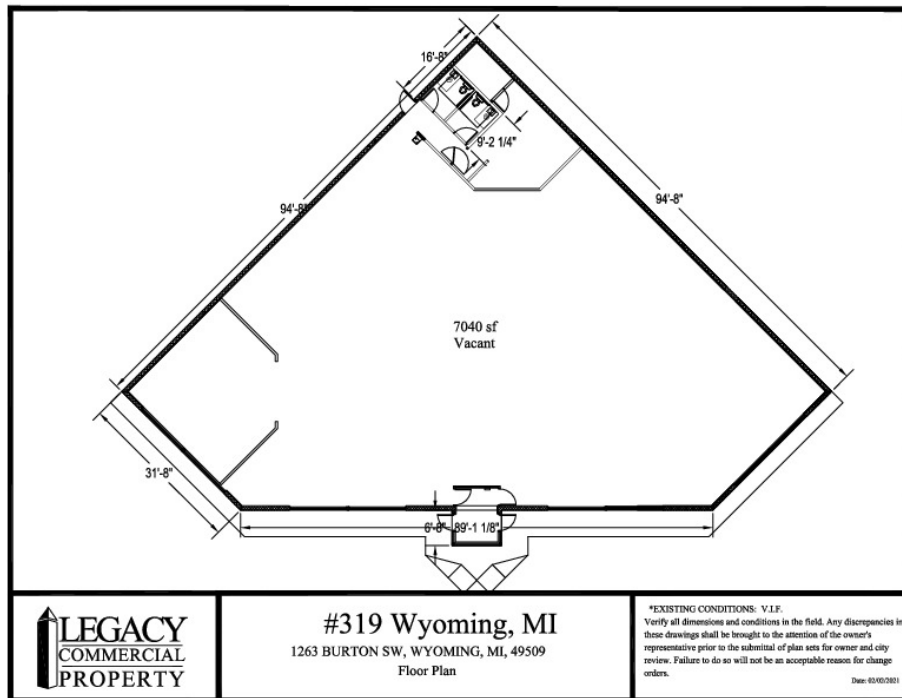
LEGACY
COMMERCIAL PROPERTY

2500 Lehigh Ave
Glenview, IL 60026
<http://legacypro.com>

1263 BURTON SW

WYOMING, MI 49509

SITE PLANS



Presented By:

Legacy Commercial Property

847.904.9200

info@legacypro.com



LEGACY
COMMERCIAL PROPERTY

2500 Lehigh Ave
Glenview, IL 60026
<http://legacypro.com>

1263 BURTON SW

WYOMING, MI 49509

RENT ROLL

TENANT NAME	UNIT NUMBER	UNIT SIZE (SF)	LEASE START	LEASE END	ANNUAL RENT	% OF GLA	PRICE PER SF/YR
Vacant	BLDG	7,040			\$0	100.0	\$0.00
Totals/Averages		7,040			\$0		\$0.00

Presented By:

Legacy Commercial Property

847.904.9200

info@legacypro.com



LEGACY
COMMERCIAL PROPERTY

2500 Lehigh Ave
Glenview, IL 60026
<http://legacypro.com>