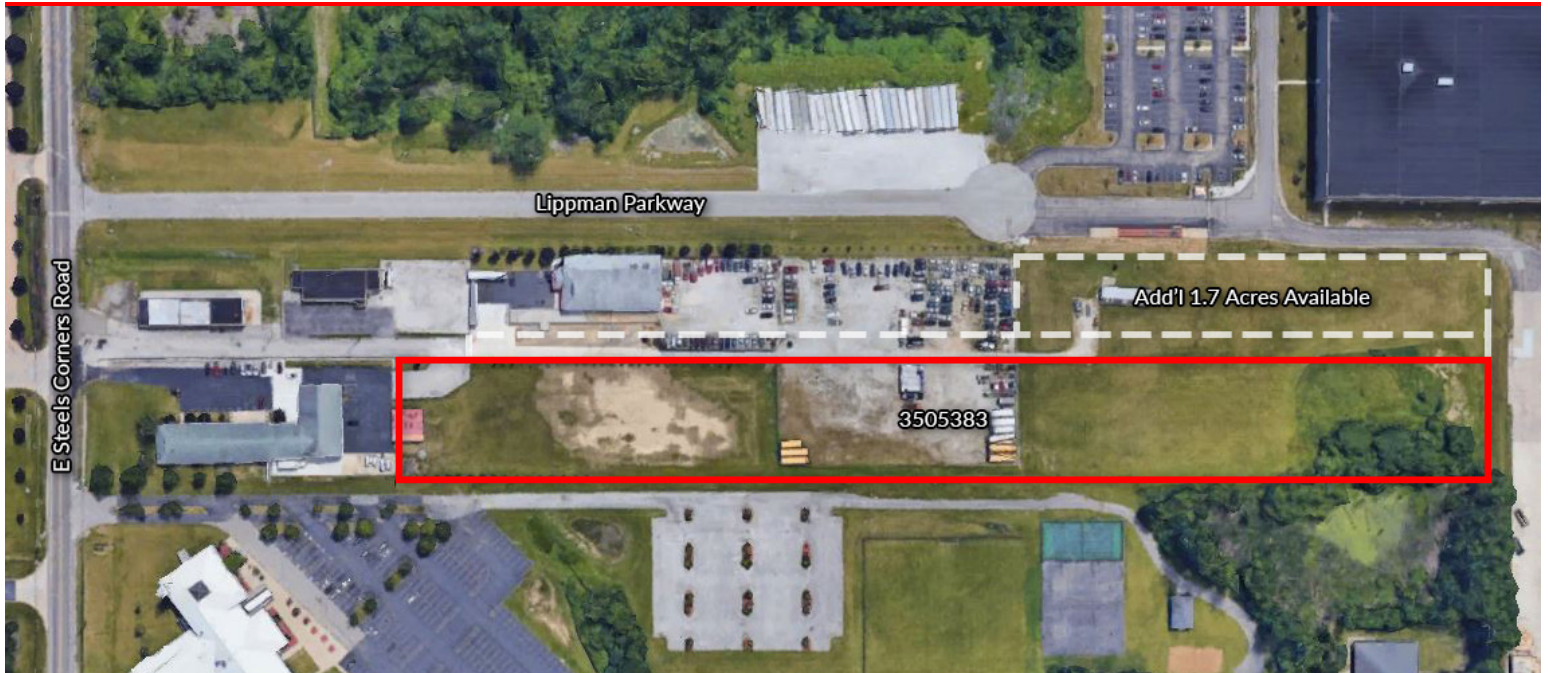


CUYAHOGA FALLS LAND FOR SALE

174 E. Steels Corners Road (Rear), Cuyahoga Falls, OH 44224



OVERVIEW

- * 4.5 Acres of Vacant Land off of E. Steels Corners Road
- * Just East of State Road
- * Property is in Rear of 174 E. Steels Corners Road Which is for Sale and / or Lease (See Agents for Details)
- * Convenient Access to SR 8
- * Mixed-Use Zoning Suitable for Service / Office / Light Industrial
- * Adjacent to GOJO Industries / Lippman Parkway
- * +/- 155 X 1264
- * Real Estate Taxes \$1,790.00 Annual
- * Additional Land Available



Sale Price:
\$450,000



Lot Size:
4.5 Acres



Parcel:
3505383



Zoning:
E-1

OUR NETWORK IS YOUR EDGE.

All information is from sources deemed reliable and is subject to errors, omissions, change of price, rental, prior sale, and withdrawal without notice. Prospect should carefully verify each item of information contained herein.

Debra Kaplan
O: 330.940.9360
C: 330.328.5594
debra@hoffleigh.com

David Kaplan, SIOR
O: 330.940.9360
C: 330.338.5594
dkaplan@hoffleigh.com



CUYAHOGA FALLS LAND FOR SALE

174 E. Steels Corners Road (Rear), Cuyahoga Falls, OH 44224

174 E Steels Corners Rd, Stow, Ohio, 44224

DEMOGRAPHICS



39,530
Population



42.7
Median Age



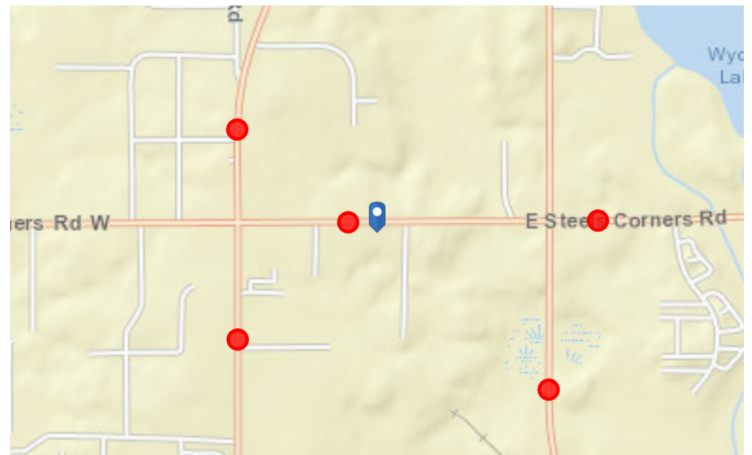
2.3
Average
Household Size



\$62,741
Median Household
Income

TRAFFIC COUNT

Cross street	Traffic 1	Distance
Koir Dr	12,569	0.1
Kimberlyn Dr	10,760	0.4
Valencia Dr	12,470	0.4
Wyoga Lake Rd	20,263	0.5
Remington Rd	4,764	0.6



OUR NETWORK IS YOUR EDGE.

All information is from sources deemed reliable and is subject to errors, omissions, change of price, rental, prior sale, and withdrawal without notice. Prospect should carefully verify each item of information contained herein.

Debra Kaplan

O: 330.940.9360

C: 330.328.5594

debra@hoffleigh.com

David Kaplan, SIOR

O: 330.940.9360

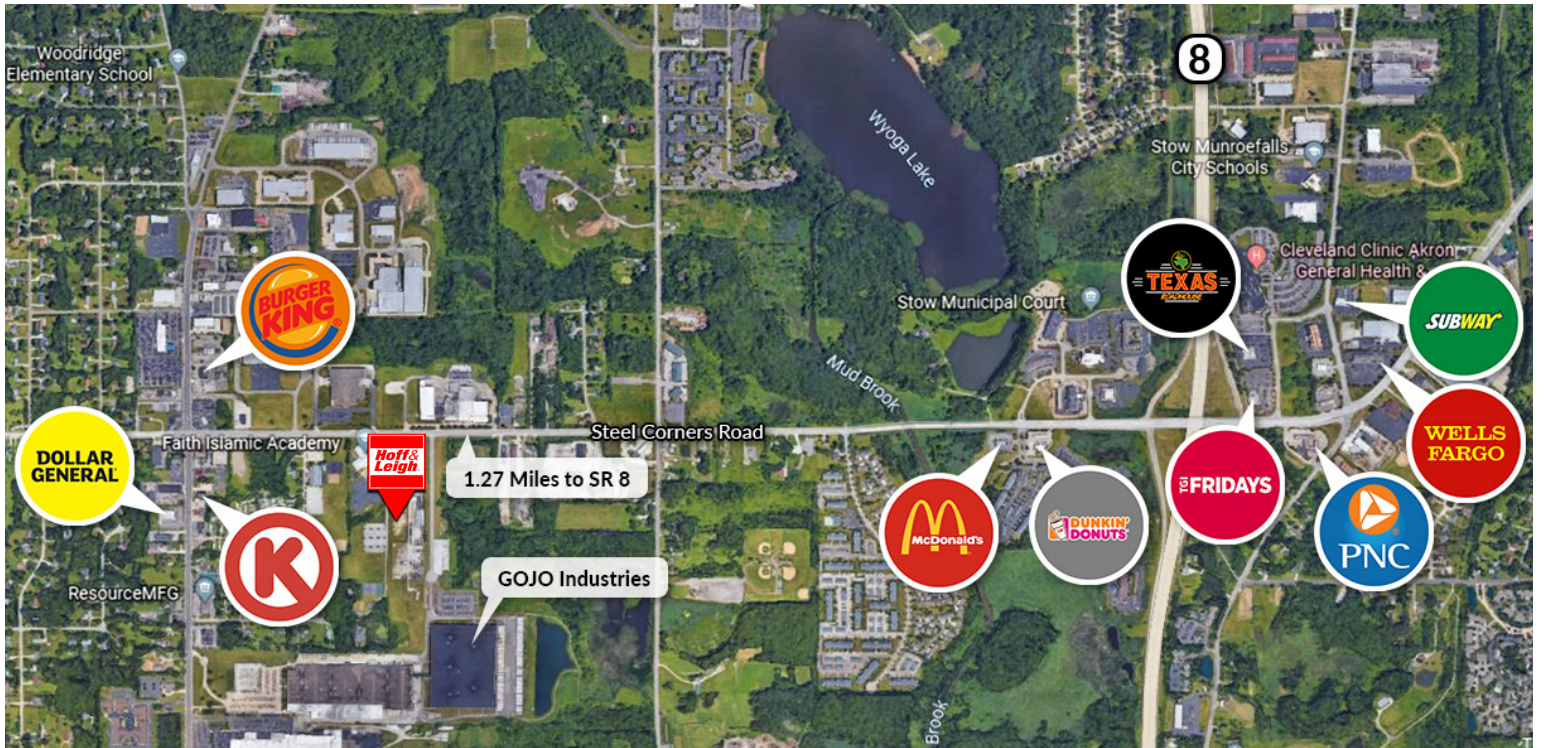
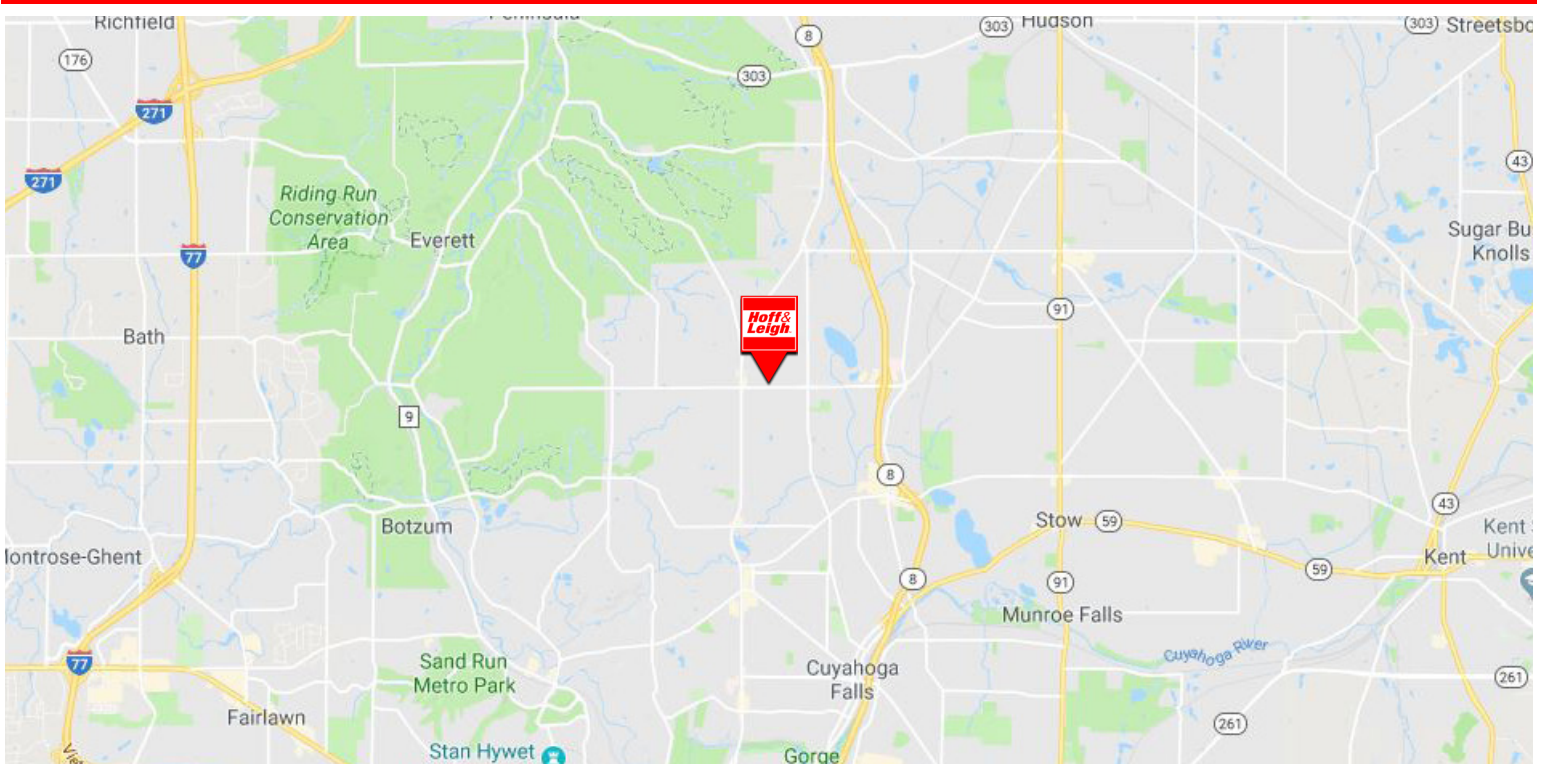
C: 330.338.5594

dkaplan@hoffleigh.com



CUYAHOGA FALLS LAND FOR SALE

174 E. Steels Corners Road (Rear), Cuyahoga Falls, OH 44224



OUR NETWORK IS YOUR EDGE.

All information is from sources deemed reliable and is subject to errors, omissions, change of price, rental, prior sale, and withdrawal without notice. Prospect should carefully verify each item of information contained herein.

Debra Kaplan
O: 330.940.9360
C: 330.328.5594
debra@hoffleigh.com

David Kaplan, SIOR
O: 330.940.9360
C: 330.338.5594
dkaplan@hoffleigh.com