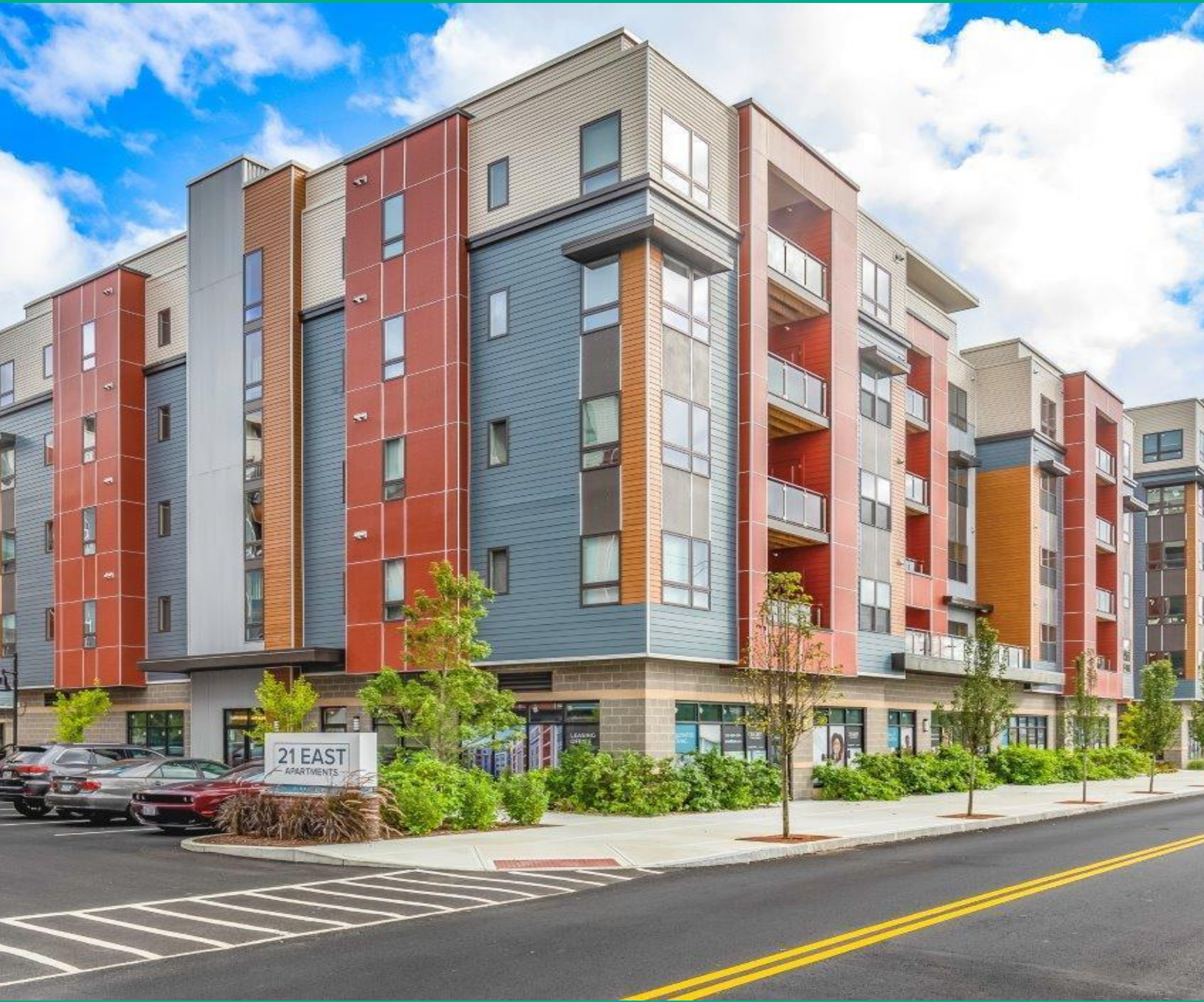


# FOR LEASE



## RETAIL / COMMERCIAL SPACE AT 21 EAST

21 EAST STREET, NORTH ATTLEBORO, MA 02760



**Kelleher  
& Sadowsky**

Voted Best Commercial Real Estate Brokerage - Worcester Business Journal

### PHILIP DESIMONE

**Executive Vice President**

[desimone@kelleher-sadowsky.com](mailto:desimone@kelleher-sadowsky.com)

O: 508.635.6795

C: 617.721.6466

### TODD ALEXANDER

**Executive Vice President**

[alexander@kelleher-sadowsky.com](mailto:alexander@kelleher-sadowsky.com)

O: 508.841.6201

C: 508.981.7014

### TOM BODDEN

**Vice President**

[bodden@kelleher-sadowsky.com](mailto:bodden@kelleher-sadowsky.com)

O: 508.841.6214

C: 774.214.6225

# EXECUTIVE SUMMARY



## OFFERING SUMMARY

Property Type: Retail / Commercial

Available Spaces: Building A: 2,573 SF  
Building B: 5,156 SF (sub-dividable)  
Building C: 5,032 SF (sub-dividable)

Year Built: 2021

Lease Rate: Negotiable

## PROPERTY OVERVIEW

Kelleher & Sadowsky is pleased to present the retail/commercial space at 21 East Street. There are eight separate units available for lease on the first floor, ranging in size from ± 1,178 - 5,156 square feet. This brand new luxury apartment development has over 180 market-rate apartments and amenities within. 21 East Street is conveniently located one block from Route 1 and South Washington Street in the heart of North Attleboro and offers quick access to I-495 and I-95.. Call us today to schedule a tour!

DEMOGRAPHICS	1 MILE	3 MILES	5 MILES
Total Households	3,858	14,255	35,413
Total Population	9,317	37,038	93,231
Average HH Income	\$72,763	\$85,347	\$85,562

### PHILIP DESIMONE

Executive Vice President

desimone@kelleher-sadowsky.com  
O: 508.635.6795  
C: 617.721.6466

### TODD ALEXANDER

Executive Vice President

alexander@kelleher-sadowsky.com  
O: 508.841.6201  
C: 508.981.7014

### TOM BODDEN

Vice President

bodden@kelleher-sadowsky.com  
O: 508.841.6214  
C: 774.214.6225



Voted Best Commercial Real Estate Brokerage - Worcester Business Journal  
120 Front Street, Suite 210 | Worcester, MA 01608 | 508.755.0707 | kelleher-sadowsky.com

## ADDITIONAL PHOTOS



### PHILIP DESIMONE

Executive Vice President

[desimone@kelleher-sadowsky.com](mailto:desimone@kelleher-sadowsky.com)

O: 508.635.6795

C: 617.721.6466

### TODD ALEXANDER

Executive Vice President

[alexander@kelleher-sadowsky.com](mailto:alexander@kelleher-sadowsky.com)

O: 508.841.6201

C: 508.981.7014

### TOM BODDEN

Vice President

[bodden@kelleher-sadowsky.com](mailto:bodden@kelleher-sadowsky.com)

O: 508.841.6214

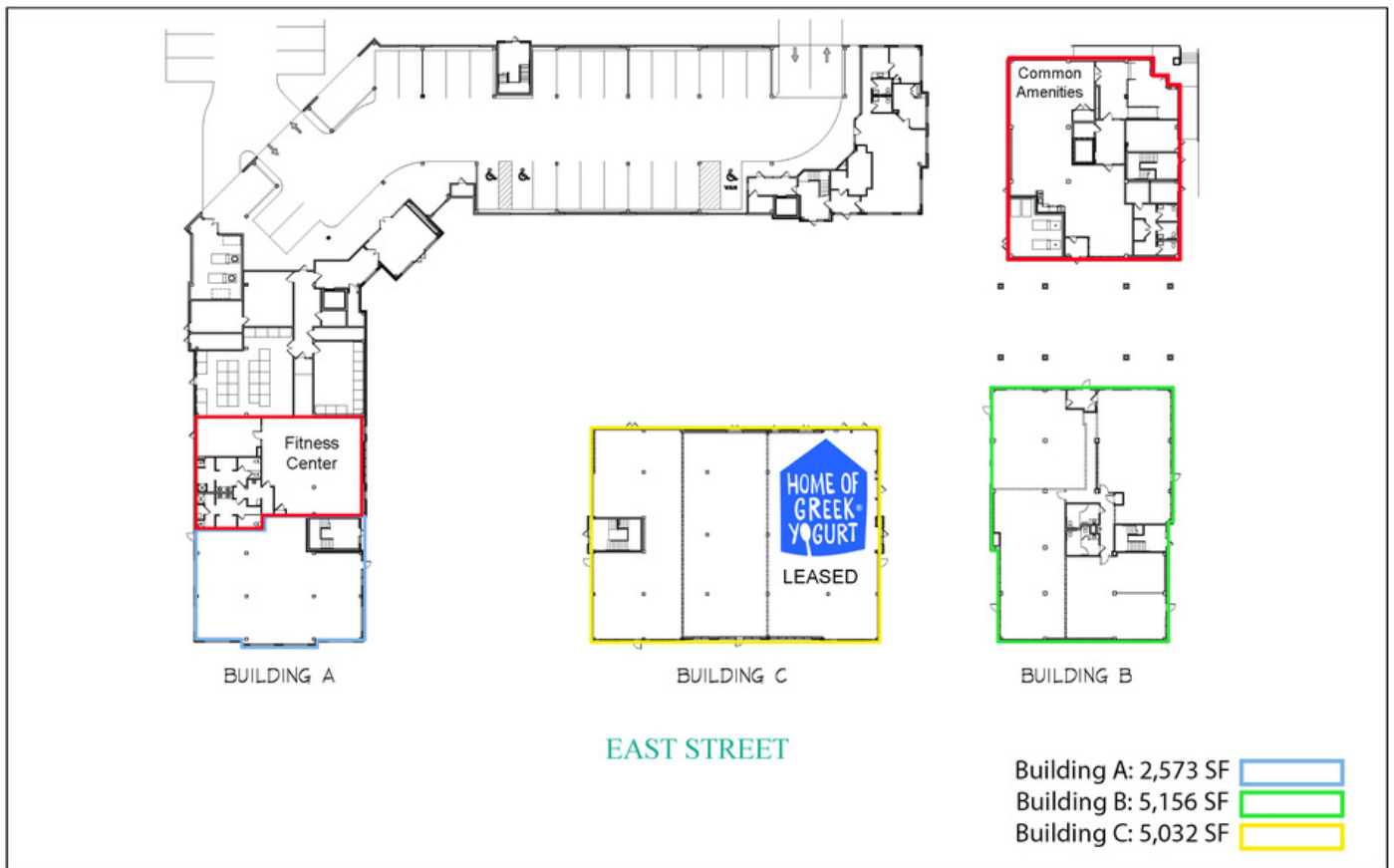
C: 774.214.6225



Voted Best Commercial Real Estate Brokerage - Worcester Business Journal

120 Front Street, Suite 210 | Worcester, MA 01608 | 508.755.0707 | [kelleher-sadowsky.com](http://kelleher-sadowsky.com)

# BUILDING A, B, AND C



## BUILDING A - FLOOR PLAN



2,573 SF

EAST STREET



Voted Best Commercial Real Estate Brokerage - Worcester Business Journal

120 Front Street, Suite 210 | Worcester, MA 01608 | 508.755.0707 | kelleher-sadowsky.com

**PHILIP DESIMONE**

Executive Vice President

desimone@kelleher-sadowsky.com

O: 508.635.6795

C: 617.721.6466

**TODD ALEXANDER**

Executive Vice President

alexander@kelleher-sadowsky.com

O: 508.841.6201

C: 508.981.7014

**TOM BODDEN**

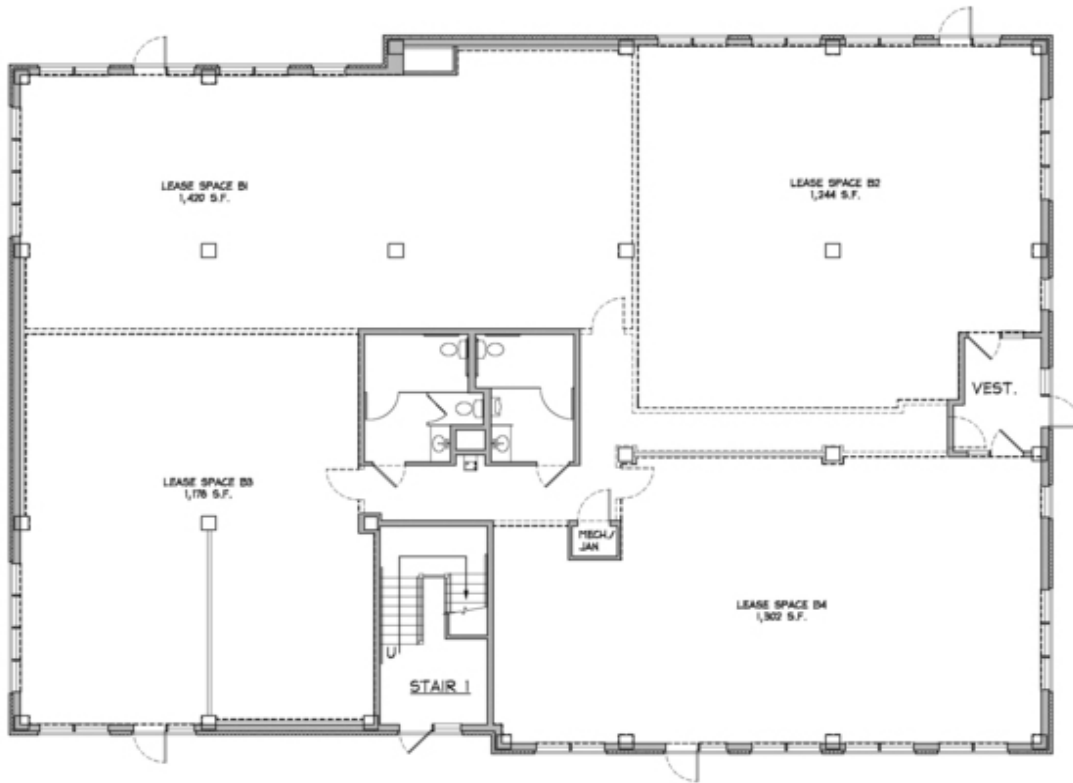
Vice President

bodden@kelleher-sadowsky.com

O: 508.841.6214

C: 774.214.6225

## BUILDING B - FLOOR PLAN



5,156 SF

## Building B

**PHILIP DESIMONE**

Executive Vice President

desimone@kelleher-sadowsky.com

O: 508.635.6795

C: 617.721.6466

**TODD ALEXANDER**

Executive Vice President

alexander@kelleher-sadowsky.com

O: 508.841.6201

C: 508.981.7014

**TOM BODDEN**

Vice President

bodden@kelleher-sadowsky.com

O: 508.841.6214

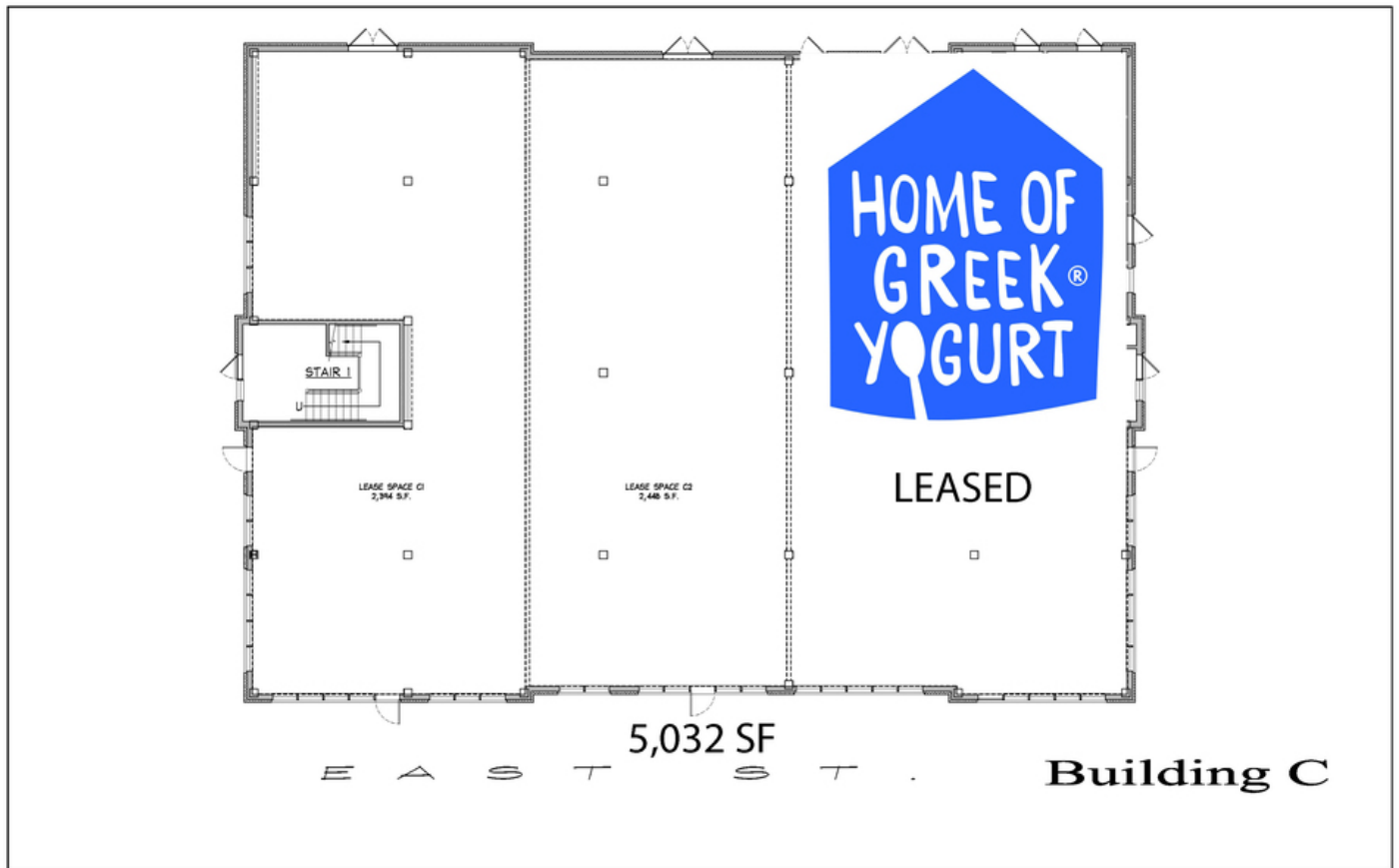
C: 774.214.6225



Voted Best Commercial Real Estate Brokerage - Worcester Business Journal

120 Front Street, Suite 210 | Worcester, MA 01608 | 508.755.0707 | kelleher-sadowsky.com

## BUILDING C - FLOOR PLAN



**PHILIP DESIMONE**

Executive Vice President

desimone@kelleher-sadowsky.com

O: 508.635.6795

C: 617.721.6466

**TODD ALEXANDER**

Executive Vice President

alexander@kelleher-sadowsky.com

O: 508.841.6201

C: 508.981.7014

**TOM BODDEN**

Vice President

bodden@kelleher-sadowsky.com

O: 508.841.6214

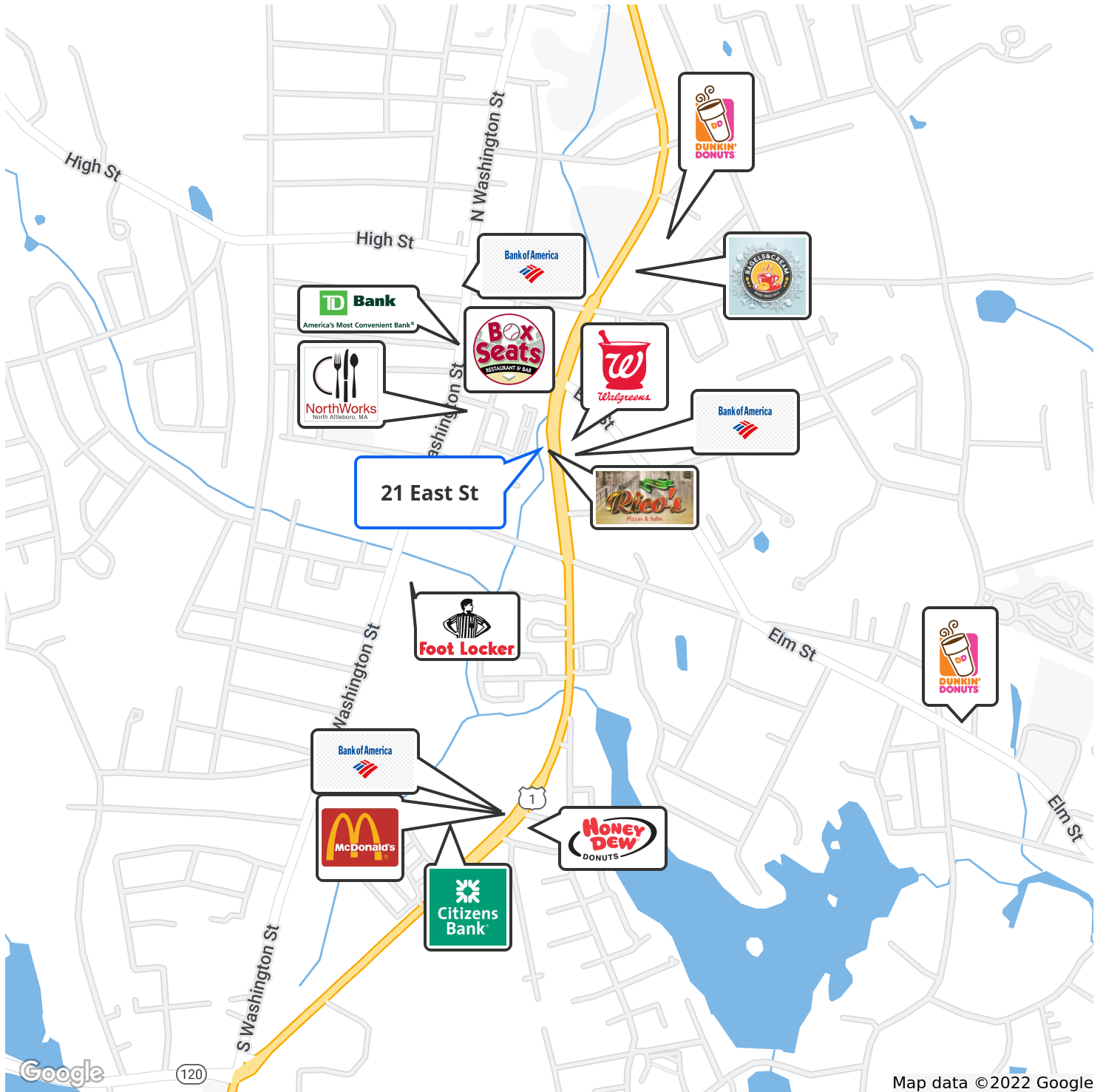
C: 774.214.6225



Voted Best Commercial Real Estate Brokerage - Worcester Business Journal

120 Front Street, Suite 210 | Worcester, MA 01608 | 508.755.0707 | kelleher-sadowsky.com

# NEARBY AMENITIES



**PHILIP DESIMONE**

Executive Vice President

desimone@kelleher-sadowsky.com

O: 508.635.6795

C: 617.721.6466

**TODD ALEXANDER**

Executive Vice President

alexander@kelleher-sadowsky.com

O: 508.841.6201

C: 508.981.7014

**TOM BODDEN**

Vice President

bodden@kelleher-sadowsky.com

O: 508.841.6214

C: 774.214.6225



Voted Best Commercial Real Estate Brokerage - Worcester Business Journal

120 Front Street, Suite 210 | Worcester, MA 01608 | 508.755.0707 | kelleher-sadowsky.com

Map data ©2022 Google