

# OFFICE SPACE FOR LEASE



## 10-14 E. WORCESTER STREET

WORCESTER, MA 01604



**BRIAN JOHNSON**

**Vice President**

johnson@kelleher-sadowsky.com

O: 508.635.6783

C: 774.272.1112

**DREW HIGGINS**

**Vice President**

higgins@kelleher-sadowsky.com

O: 508.635.6784

C: 508.735.1783

## EXECUTIVE SUMMARY



### OFFERING SUMMARY

Building Size:	±58,446 SF
Available SF:	±14,000 SF
Parking:	On-site, surface lot
Elevator:	Yes
Availability:	Immediate
Lease Rate:	\$18.00 SF/yr (plus electricity)

### PROPERTY OVERVIEW

Brian Johnson & Drew Higgins of Kelleher & Sadowsky Associates, Inc. are pleased to introduce the availability of ±14,000 SF of professional office space located at 10-14 East Worcester Street in Worcester, MA. Located on the third floor, the available space offers tremendous natural light and high ceilings with a mix of private offices with large bullpen space as well as conference & meeting areas. In addition, the space includes in-suite bathrooms and a kitchenette. The building is one of the most recognizable in Worcester as it is situated at the beginning of Worcester's busy Shrewsbury Street immediately off I-290, providing signage opportunities and easy access for both clients and employees. The property is professionally managed and includes a large parking lot. With this office space, your employees will be within walking distance to Union Station and the WRTA Station as well as to area amenities that include restaurants, breweries, beauty & hair salons, coffee shops, and banks. Please give us a call today to schedule a tour.



Voted Best Commercial Real Estate Brokerage - Worcester Business Journal  
120 Front Street, Suite 210 | Worcester, MA 01608 | 508.755.0707 | kelleher-sadowsky.com

### BRIAN JOHNSON

Vice President

johnson@kelleher-sadowsky.com

O: 508.635.6783

C: 774.272.1112

### DREW HIGGINS

Vice President

higgins@kelleher-sadowsky.com

O: 508.635.6784

C: 508.735.1783

FOR LEASE | 10-14 E. WORCESTER STREET

## EXTERIOR PHOTOS



Voted Best Commercial Real Estate Brokerage - Worcester Business Journal  
120 Front Street, Suite 210 | Worcester, MA 01608 | 508.755.0707 | kelleher-sadowsky.com

**BRIAN JOHNSON**

Vice President

johnson@kelleher-sadowsky.com

O: 508.635.6783

C: 774.272.1112

**DREW HIGGINS**

Vice President

higgins@kelleher-sadowsky.com

O: 508.635.6784

C: 508.735.1783

FOR LEASE | 10-14 E. WORCESTER STREET

## INTERIOR PHOTOS



Voted Best Commercial Real Estate Brokerage - Worcester Business Journal  
120 Front Street, Suite 210 | Worcester, MA 01608 | 508.755.0707 | kelleher-sadowsky.com

**BRIAN JOHNSON**

**Vice President**

johnson@kelleher-sadowsky.com

O: 508.635.6783

C: 774.272.1112

**DREW HIGGINS**

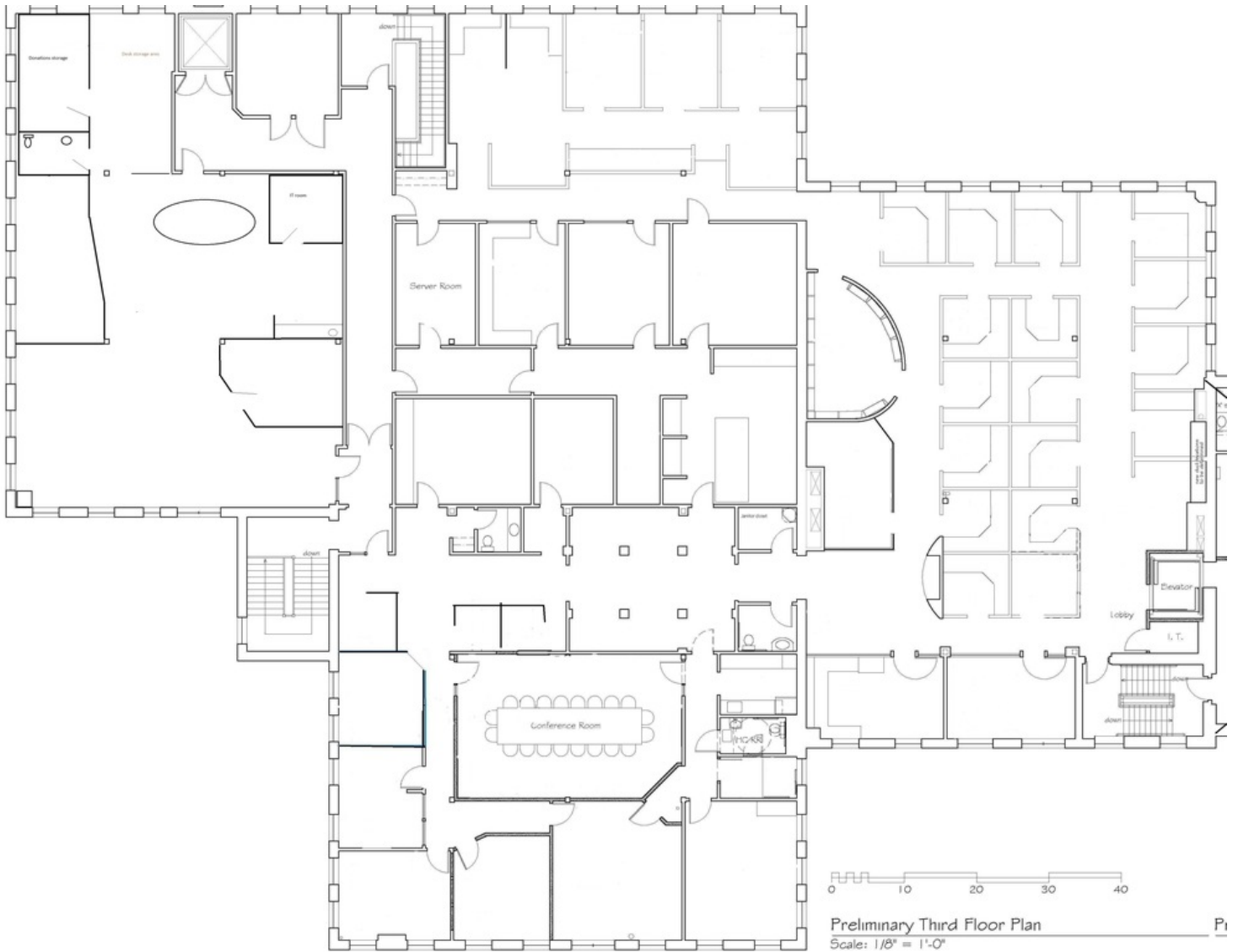
**Vice President**

higgins@kelleher-sadowsky.com

O: 508.635.6784

C: 508.735.1783

# FLOOR PLAN



Voted Best Commercial Real Estate Brokerage - Worcester Business Journal  
120 Front Street, Suite 210 | Worcester, MA 01608 | 508.755.0707 | kelleher-sadowsky.com

**BRIAN JOHNSON**

Vice President  
johnson@kelleher-sadowsky.com  
O: 508.635.6783  
C: 774.272.1112

**DREW HIGGINS**

Vice President  
higgins@kelleher-sadowsky.com  
O: 508.635.6784  
C: 508.735.1783

# AMENITIES MAP



Voted Best Commercial Real Estate Brokerage - Worcester Business Journal  
120 Front Street, Suite 210 | Worcester, MA 01608 | 508.755.0707 | kelleher-sadowsky.com

**BRIAN JOHNSON**

Vice President  
johnson@kelleher-sadowsky.com  
O: 508.635.6783  
C: 774.272.1112

**DREW HIGGINS**

Vice President  
higgins@kelleher-sadowsky.com  
O: 508.635.6784  
C: 508.735.1783