

2305 10TH ST.

MENOMINEE, MI 49858

EXECUTIVE SUMMARY



OFFERING SUMMARY

Available SF: 6,392 SF

PROPERTY OVERVIEW

Strong visibility on the northwest corner of 10th St and 23rd Ave with up to 6691 Sq Ft available

Lease Rate: Negotiable

Building Size: 6,691 SF



Presented By:

Legacy Commercial Property

847-904-9200

info@legacypro.com



LEGACY
COMMERCIAL PROPERTY

2500 Lehigh Ave
Glenview, IL 60026
<http://legacypro.com>

2305 10TH ST.

MENOMINEE, MI 49858

ADDITIONAL PHOTOS



Presented By:

Legacy Commercial Property

847-904-9200

info@legacypro.com



LEGACY
COMMERCIAL PROPERTY

2500 Lehigh Ave
Glenview, IL 60026
<http://legacypro.com>

2305 10TH ST.

MENOMINEE, MI 49858

PLANS



LEASE INFORMATION

Lease Type:	NNN	Lease Term:	Negotiable
Total Space:	6,691 SF	Lease Rate:	Negotiable

AVAILABLE SPACES

SUITE	TENANT	SIZE	TYPE	RATE	DESCRIPTION
2305 10th St	Available	6,392 SF	NNN	Negotiable	-

Presented By:

Legacy Commercial Property

847-904-9200

info@legacypro.com



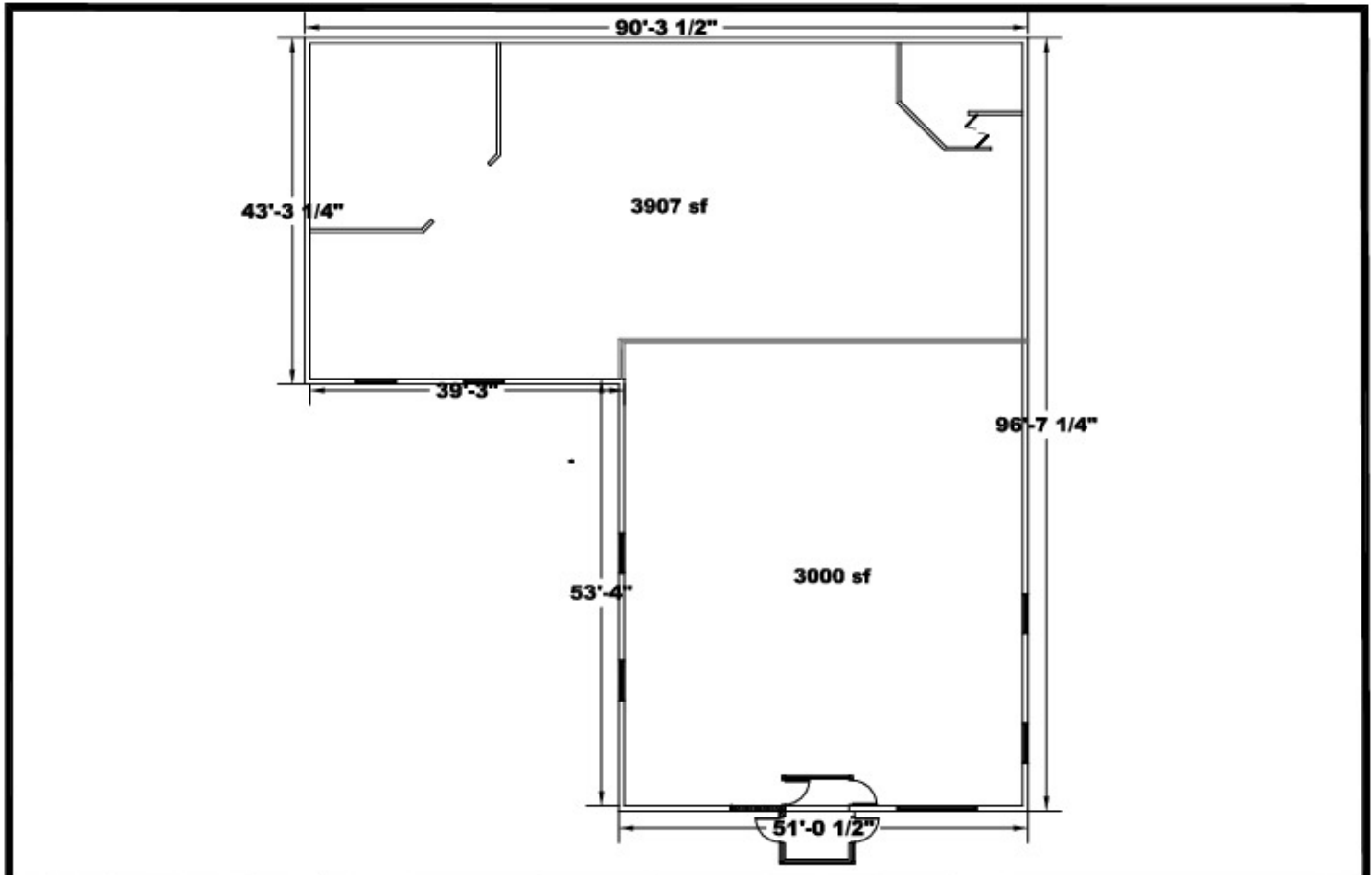
LEGACY
COMMERCIAL PROPERTY

2500 Lehigh Ave
Glenview, IL 60026
<http://legacypro.com>

2305 10TH ST.

MENOMINEE, MI 49858

FLOOR PLANS



#35 Menominee, MI
2305 10TH ST. MENOMINEE, MI, 49858
Floor Plan

***EXISTING CONDITIONS: V.I.F.**
Verify all dimensions and conditions in the field. Any discrepancies in these drawings shall be brought to the attention of the owner's representative prior to the submittal of plan sets for owner and city review. Failure to do so will not be an acceptable reason for change orders.

Date: 01/19/2023
Drawn By: DD

Presented By:

Legacy Commercial Property

847-904-9200

info@legacypro.com



LEGACY
COMMERCIAL PROPERTY

2500 Lehigh Ave
Glenview, IL 60026
http://legacypro.com