

# 724 W. ROLLINS RD.

ROUND LAKE BEACH, IL 60073

## PROPERTY SUMMARY



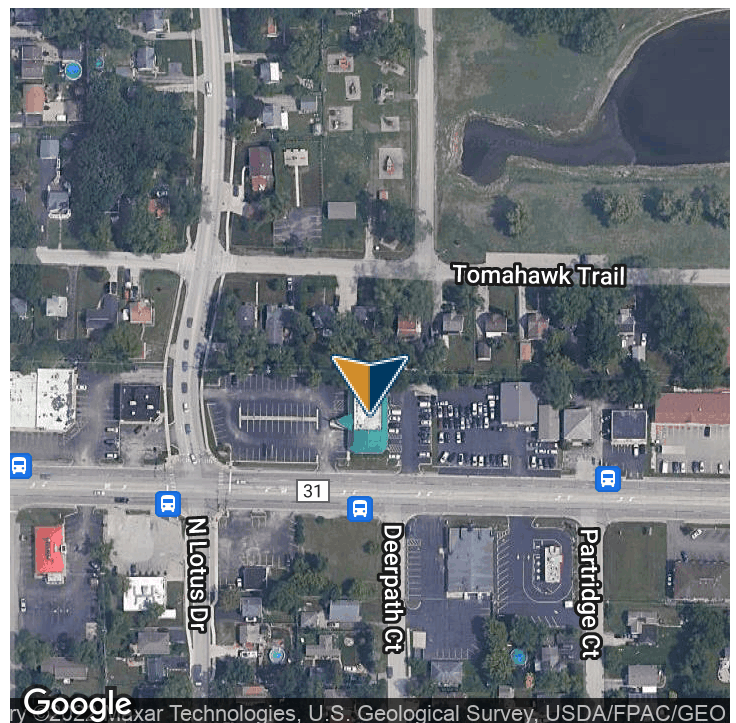
## PROPERTY DESCRIPTION

Legacy Commercial Property has prime retail space available at 724 W Rollins Rd in Round Lake Heights, IL. This retail or office space has strong visibility on the southwest corner of W Rollins Rd and N Lotus Dr with up to 3772 Sq Ft available. This is really an excellent location in one of the highest traffic areas in town. The property boasts over 70 parking spaces. This particular property has been a staple of the Princeton community for 40+ years. The building is a proven retail winner next to major traffic drivers like Dairy Queen, Auto Zone, Big Lots, Walgreens and more. Give our team of Lake County leasing experts a call at 847-904-9200 or fill out form below to learn more about this available property. This is a textbook opportunity to expand your business or franchise in Round Lake Heights, Illinois.

## OFFERING SUMMARY

Lease Rate:	Negotiable
Number of Units:	1
Available SF:	3,772 SF
Building Size:	3,772 SF

SPACES	LEASE RATE	SPACE SIZE
724 W Rollins Rd	Negotiable	3,772 SF



Presented By:

Legacy Commercial Property

847-904-9200

info@legacypro.com



**LEGACY**  
COMMERCIAL PROPERTY

2500 Lehigh Ave  
Glenview, IL 60026  
<http://legacypro.com>

# 724 W. ROLLINS RD.

ROUND LAKE BEACH, IL 60073

ADDITIONAL PHOTOS



Presented By:

Legacy Commercial Property

847-904-9200

info@legacypro.com



**LEGACY**  
COMMERCIAL PROPERTY

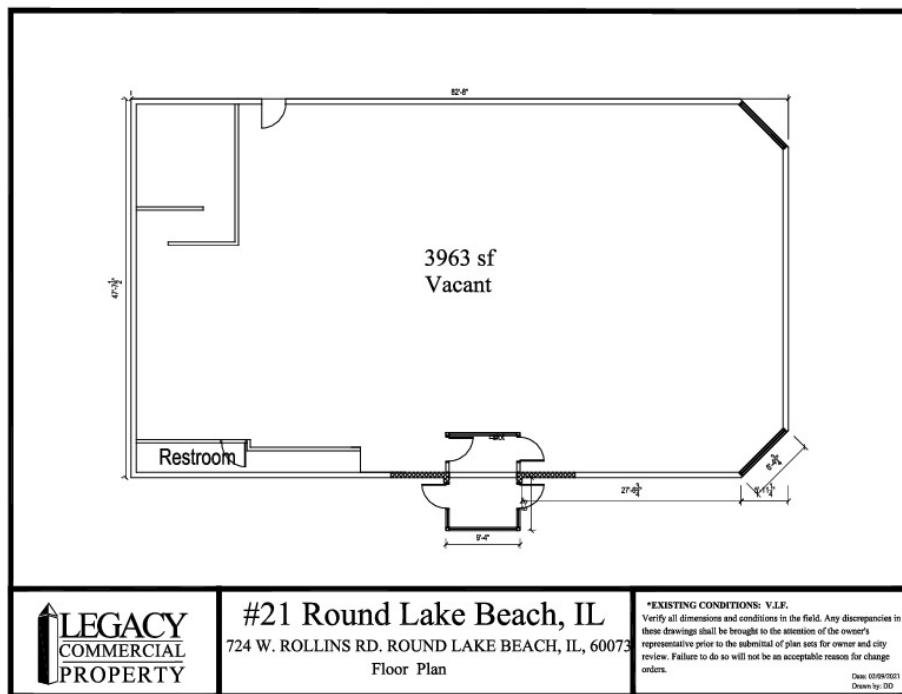
2500 Lehigh Ave  
Glenview, IL 60026  
<http://legacypro.com>



# 724 W. ROLLINS RD.

ROUND LAKE BEACH, IL 60073

## SITE PLANS



Presented By:

Legacy Commercial Property

847-904-9200

info@legacypro.com



**LEGACY**  
COMMERCIAL PROPERTY

2500 Lehigh Ave  
Glenview, IL 60026  
<http://legacypro.com>

# 724 W. ROLLINS RD.

ROUND LAKE BEACH, IL 60073

## RENT ROLL

SUITE	TENANT NAME	SIZE SF
BLDG	Vacant	3,772 SF
TOTALS		3,772 SF
AVERAGES		3,772 SF

Presented By:

Legacy Commercial Property

847-904-9200

info@legacypro.com



**LEGACY**  
COMMERCIAL PROPERTY

2500 Lehigh Ave  
Glenview, IL 60026  
<http://legacypro.com>