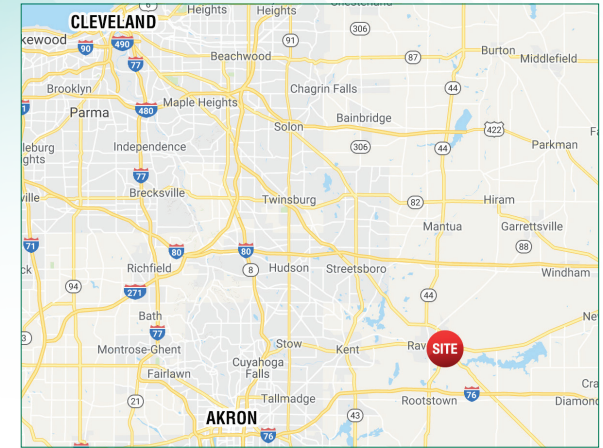
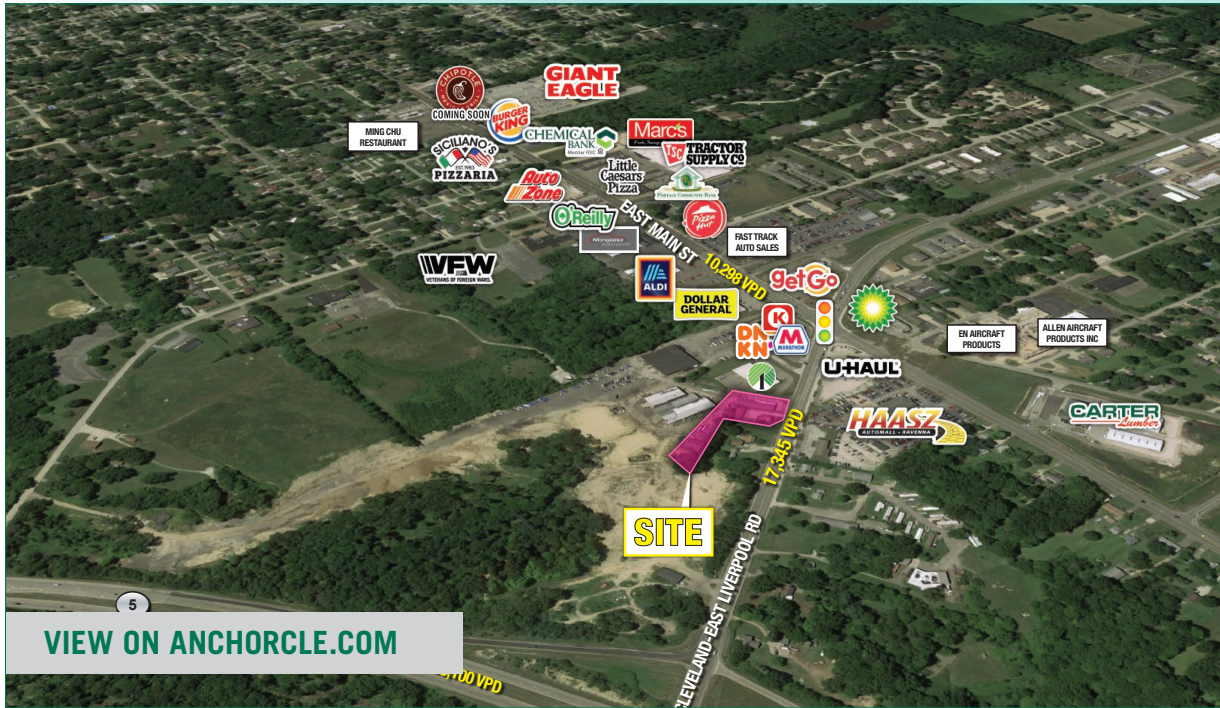


AVAILABLE FOR GROUND LEASE OR SALE

PRIME LAND | 6087 OH-14, RAVENNA, OH 44266



DEMOGRAPHICS

2020 ESTIMATES	1 mile	3 mile	5 mile
Population	3,199	18,527	31,768
Households	1,536	8,201	13,682
Average HH Income	\$67,324	\$57,600	\$63,821
Daytime Employees	1,231	8,709	12,328

CONTACT

GREG GUYURON
 gguyuron@anchorcleveland.com
 216.342.2564

HIGHLIGHTS

- Adjacent To Brand New Dollar Tree!
- Approximately 1.47 acres
- Busiest leg of one of Portage County's busiest Intersections
- On OH-44/SR-14 between SR-5 and SR-59
- Price: \$1.4m for entire property (Divisible)

TRAFFIC COUNTS

East Main St = 13,820 VPD
 Cleveland-East Liverpool Rd = 23,610 VPD

Anchor
 CLEVELAND

24500 CHAGRIN BLVD., SUITE 100

BEACHWOOD, OHIO 44122

WWW.ANCHORCLE.COM

VIEW ON ANCHORCLE.COM

TRADE AERIAL



GREG GUYURON - 216.342.2564

PRIME LAND | 6087 OH-14, RAVENNA, OH 44266

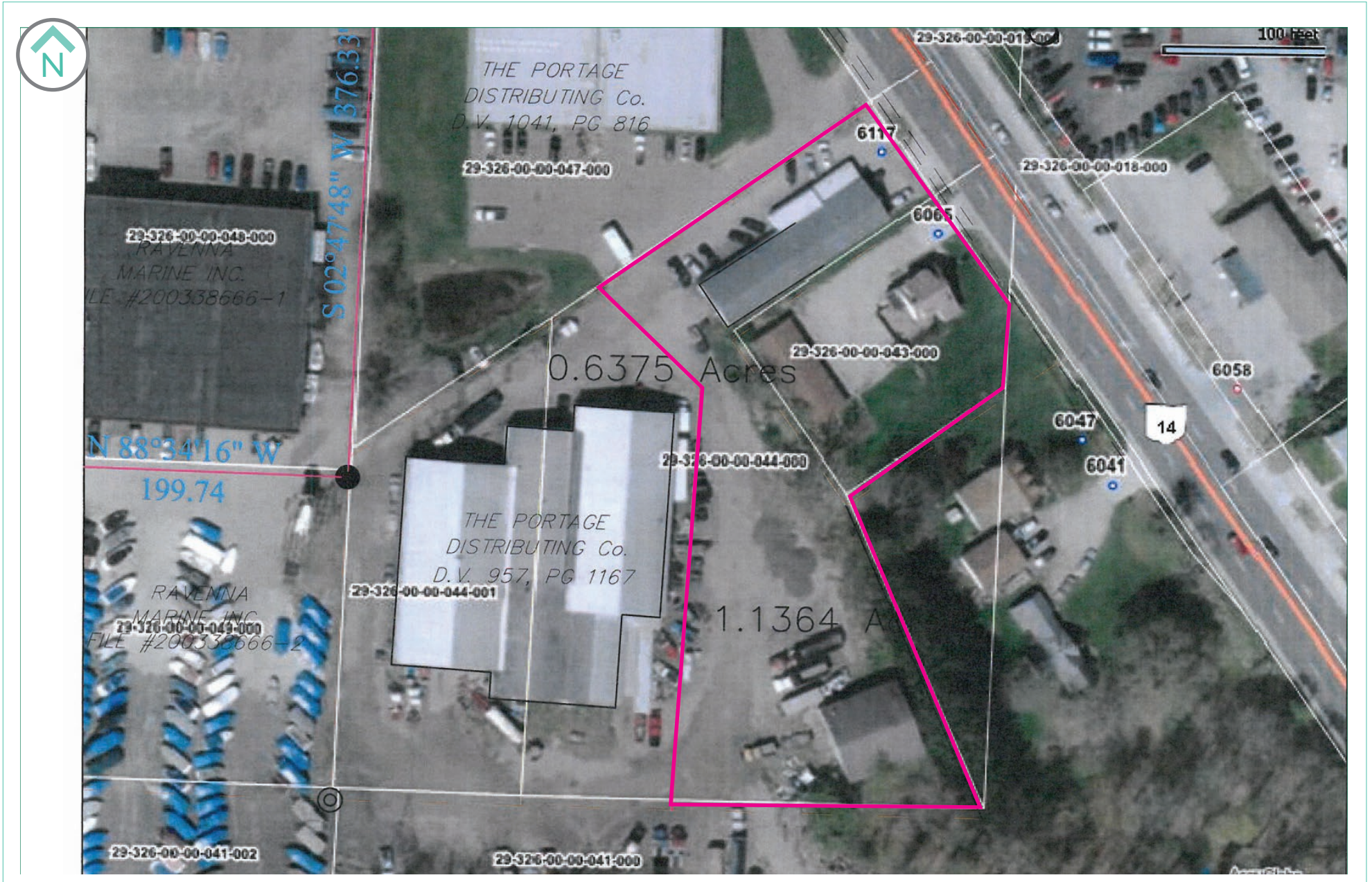
BIRDSEYE AERIAL



GREG GUYURON - 216.342.2564

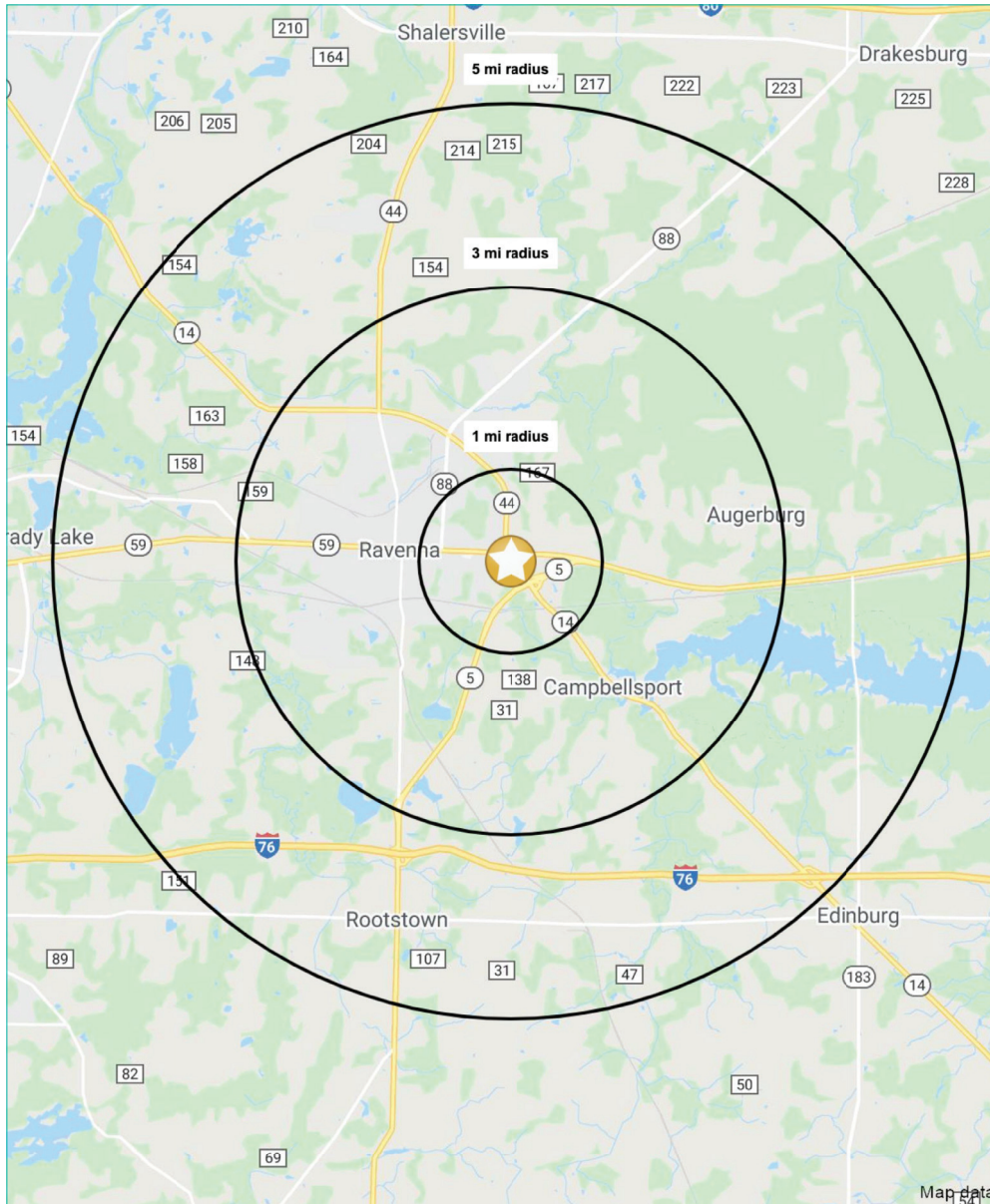
The information submitted herein is not guaranteed. Although obtained from reliable resources, it is subject to errors, omissions, prior sale and withdrawal from the market without notice. Anchor Cleveland, LLC, and its agents, associates and employees make no guarantee, warranty, or representation of the property. All images contained herein are the property of Anchor Cleveland, LLC and shall not be duplicated or reproduced without express written consent of Anchor Cleveland, LLC.

PARCEL MAP



GREG GUYURON - 216.342.2564

DEMOGRAPHICS



SUMMARY PROFILE

2000-2010 Census, 2020 Estimates with 2025 Projections
 Calculated using Weighted Block Centroid from Block Groups



Lat/Lon: 41.1557/-81.2188

6087 OH-14		1 mi radius	3 mi radius	5 mi radius
POPULATION				
	2020 Estimated Population	3,199	18,527	31,768
	2025 Projected Population	3,312	18,971	32,281
	2010 Census Population	3,470	19,112	32,218
	2000 Census Population	3,725	19,595	31,211
	Projected Annual Growth 2020 to 2025	0.7%	0.5%	0.3%
	Historical Annual Growth 2000 to 2020	-0.7%	-0.3%	-
	2020 Median Age	45.1	40.6	41.3
HOUSEHOLDS				
	2020 Estimated Households	1,536	8,201	13,682
	2025 Projected Households	1,619	8,565	14,195
	2010 Census Households	1,575	8,043	13,226
	2000 Census Households	1,623	8,002	12,405
	Projected Annual Growth 2020 to 2025	1.1%	0.9%	0.7%
	Historical Annual Growth 2000 to 2020	-0.3%	0.1%	0.5%
RACE AND ETHNICITY				
	2020 Estimated White	92.0%	88.7%	91.0%
	2020 Estimated Black or African American	4.0%	7.0%	4.9%
	2020 Estimated Asian or Pacific Islander	1.1%	0.6%	0.9%
	2020 Estimated American Indian or Native Alaskan	0.4%	0.3%	0.3%
	2020 Estimated Other Races	2.6%	3.4%	3.0%
	2020 Estimated Hispanic	2.0%	2.0%	1.9%
INCOME				
	2020 Estimated Average Household Income	\$67,324	\$57,600	\$63,821
	2020 Estimated Median Household Income	\$49,915	\$49,144	\$55,365
	2020 Estimated Per Capita Income	\$32,393	\$25,585	\$27,589
EDUCATION (AGE 25+)				
	2020 Estimated Elementary (Grade Level 0 to 8)	2.9%	3.2%	2.6%
	2020 Estimated Some High School (Grade Level 9 to 11)	4.8%	7.2%	6.4%
	2020 Estimated High School Graduate	37.3%	42.6%	42.3%
	2020 Estimated Some College	22.5%	19.3%	19.0%
	2020 Estimated Associates Degree Only	9.7%	9.3%	9.1%
	2020 Estimated Bachelors Degree Only	14.7%	11.5%	12.8%
	2020 Estimated Graduate Degree	8.2%	6.8%	7.8%
BUSINESS				
	2020 Estimated Total Businesses	123	668	920
	2020 Estimated Total Employees	1,231	8,709	12,328
	2020 Estimated Employee Population per Business	10.0	13.0	13.4
	2020 Estimated Residential Population per Business	26.0	27.7	34.5

This report was produced using data from private and government sources deemed to be reliable. The information herein is provided without representation or warranty.

GREG GUYURON - 216.342.2564