

**5007 TURNEY ROAD  
GARFIELD HEIGHTS, OHIO 44125**  
FORMER BANK

**Anchor**  
CLEVELAND



CHRIS MCFARLAND  
216.342.2578  
cmcfarland@anchorcleveland.com

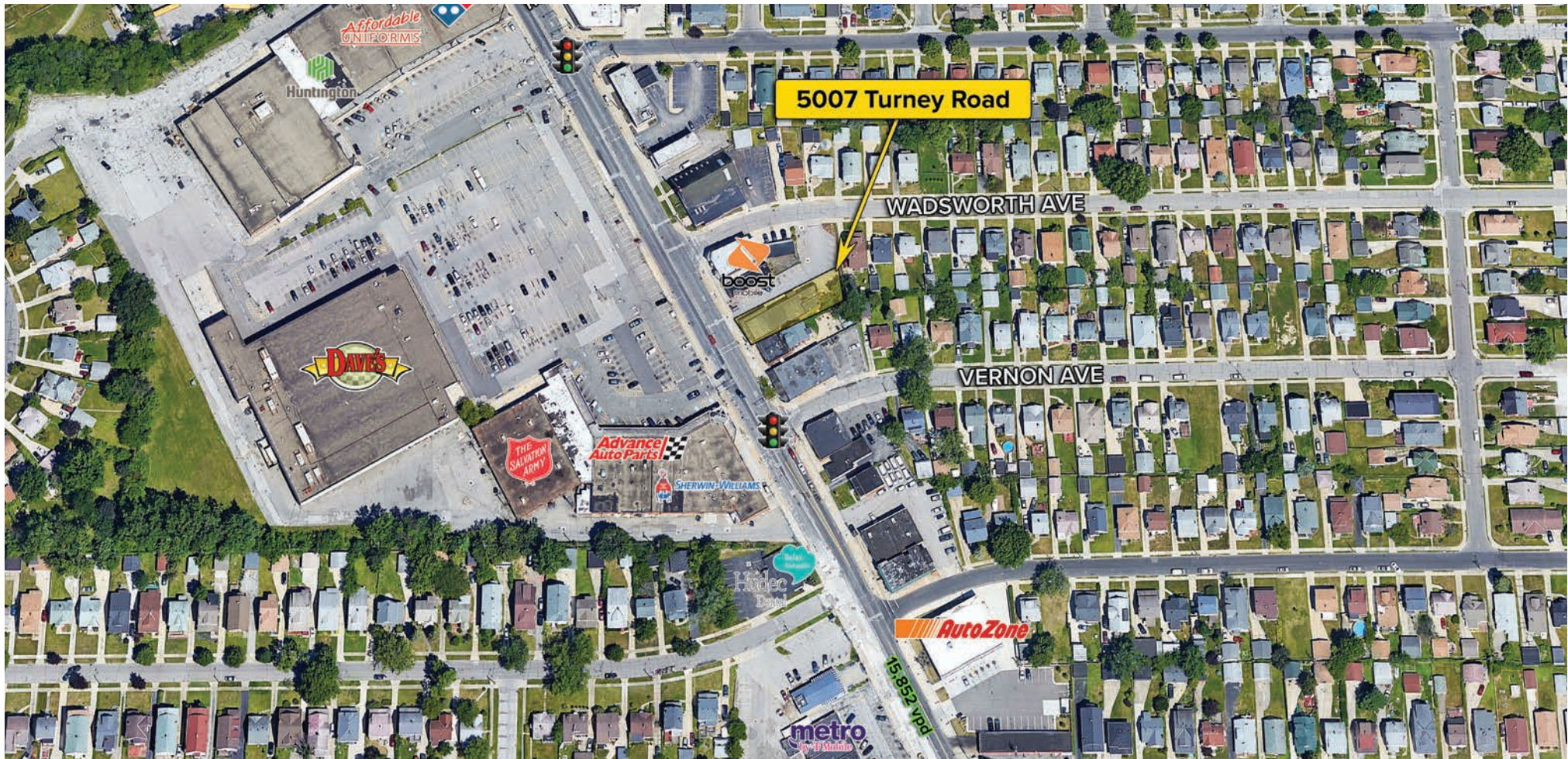
ALLISON GIOMUSO  
216.342.2620  
agiomuso@anchorcleveland.

CLICK TO VIEW ON  
GOOGLEMAPS



# AVAILABLE FOR SALE

FORMER BANK | 5007 TURNEY ROAD GARFIELD HEIGHTS, OHIO 44125



## HIGHLIGHTS

- ▶ FOR SALE
- ▶ +/- 3,218 SF Former bank with drive-thru
- ▶ Located across from the Turneytown Shopping Center anchored by Dave's Supermarket
- ▶ In the densely populated neighborhood of Garfield Heights
- ▶ Zoned U-4 District; Retail & Services/General Business

CHRIS MCFARLAND  
216.342.2578  
cmcfarland@anchorcleveland.com

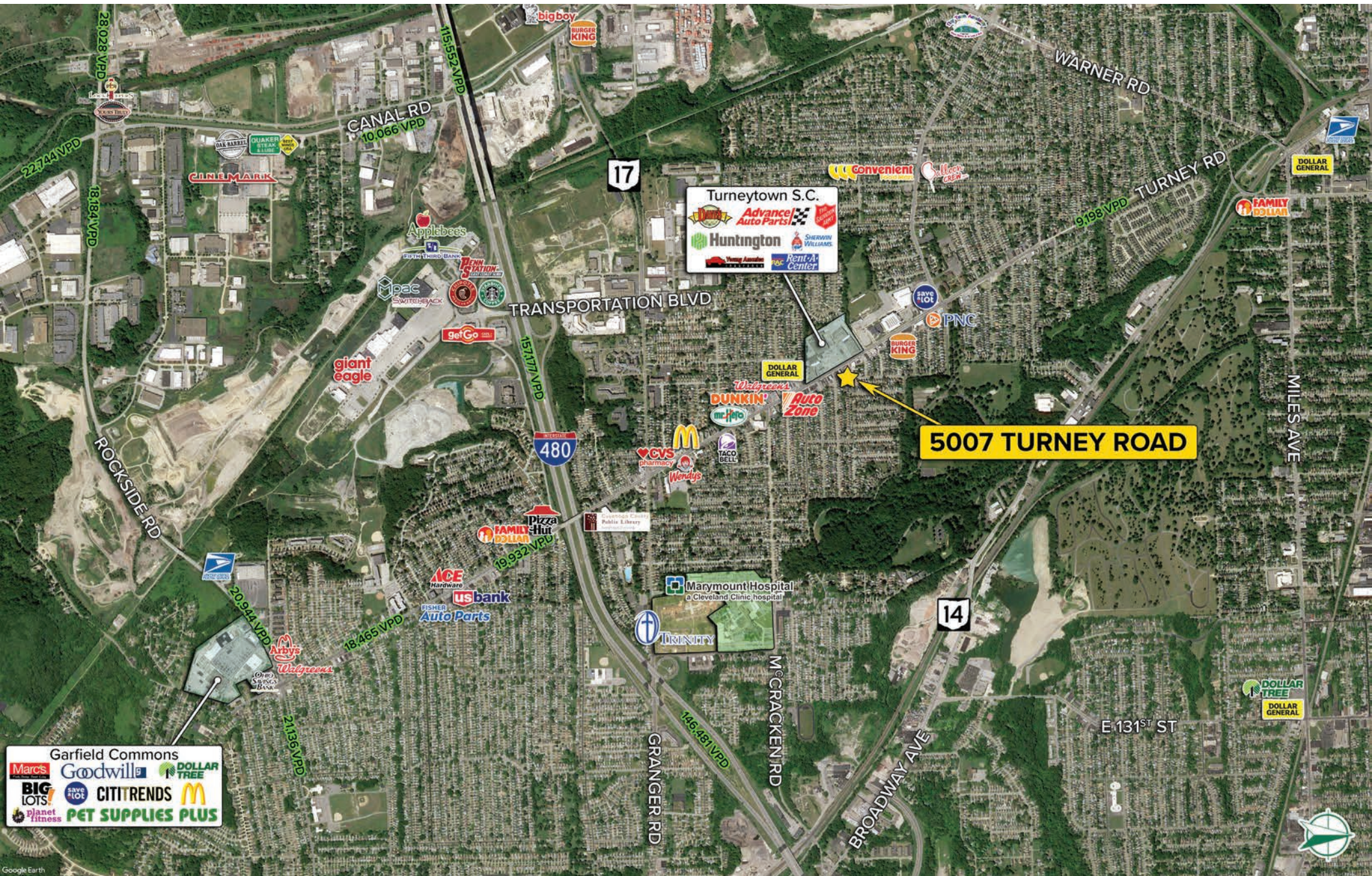
ALLISON GIOMUSO  
216.342.2620  
agiomuso@anchorcleveland.com

216.342.2523  
www.anchorcleveland.com

**Anchor**  
CLEVELAND

# AVAILABLE FOR SALE

FORMER BANK | 5007 TURNEY ROAD GARFIELD HEIGHTS, OHIO 44125



CHRIS MCFARLAND  
216.342.2578  
cmcfarland@anchorcleveland.com

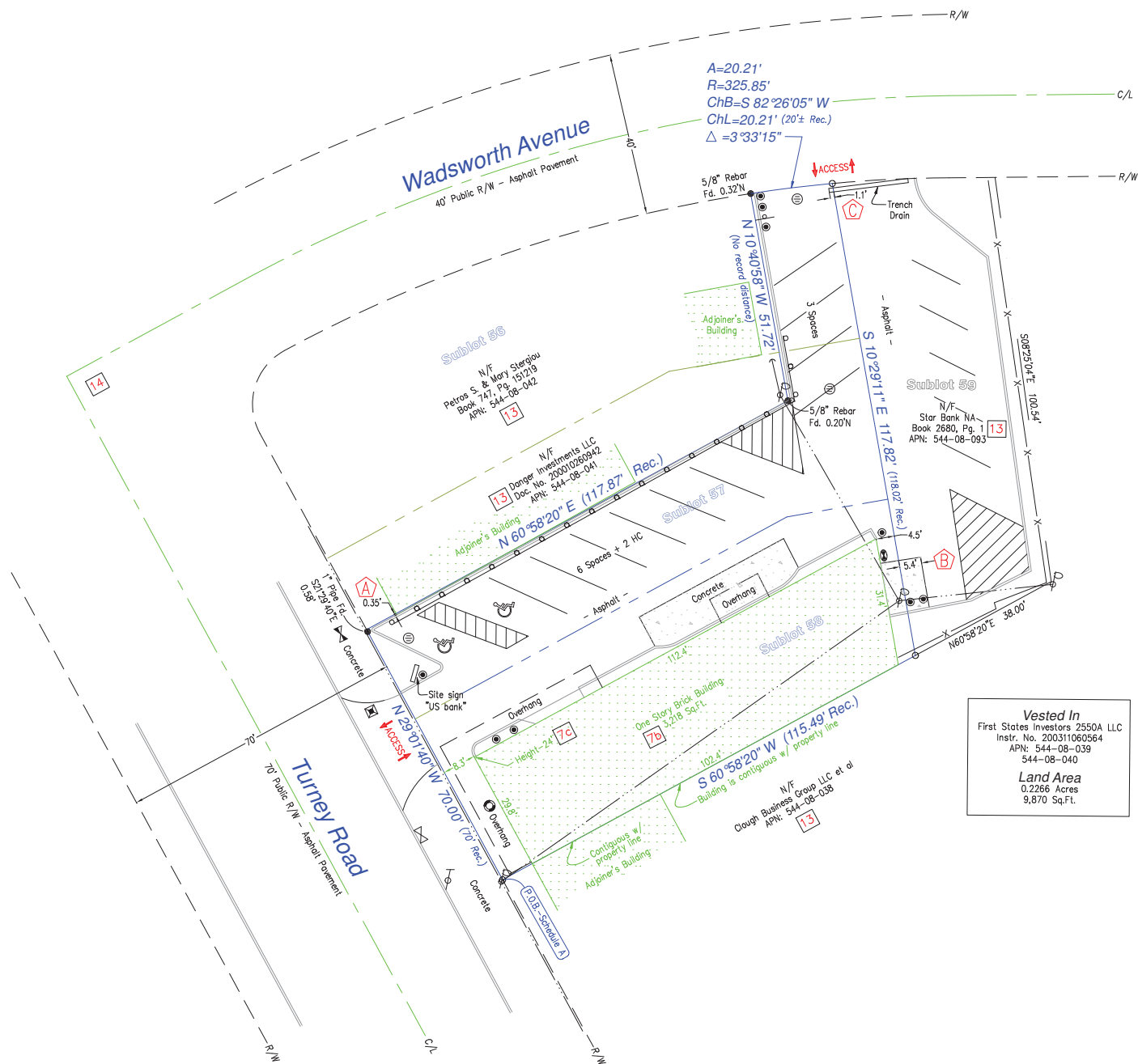
ALLISON GIOMUSO  
216.342.2620  
agiomuso@anchorcleveland.com

216.342.2523  
www.anchorcleveland.com

**Anchor**  
CLEVELAND

# AVAILABLE FOR SALE

FORMER BANK | 5007 TURNEY ROAD GARFIELD HEIGHTS, OHIO 44125



**Vested In**  
 First States Investors 2550A LLC  
 Instr. No. 200311060564  
 APN: 544-08-039  
 544-08-040  
**Land Area**  
 0.2266 Acres  
 9,870 Sq.Ft.

**CHRIS MCFARLAND**  
 216.342.2578  
 cmcfarland@anchorcleveland.com

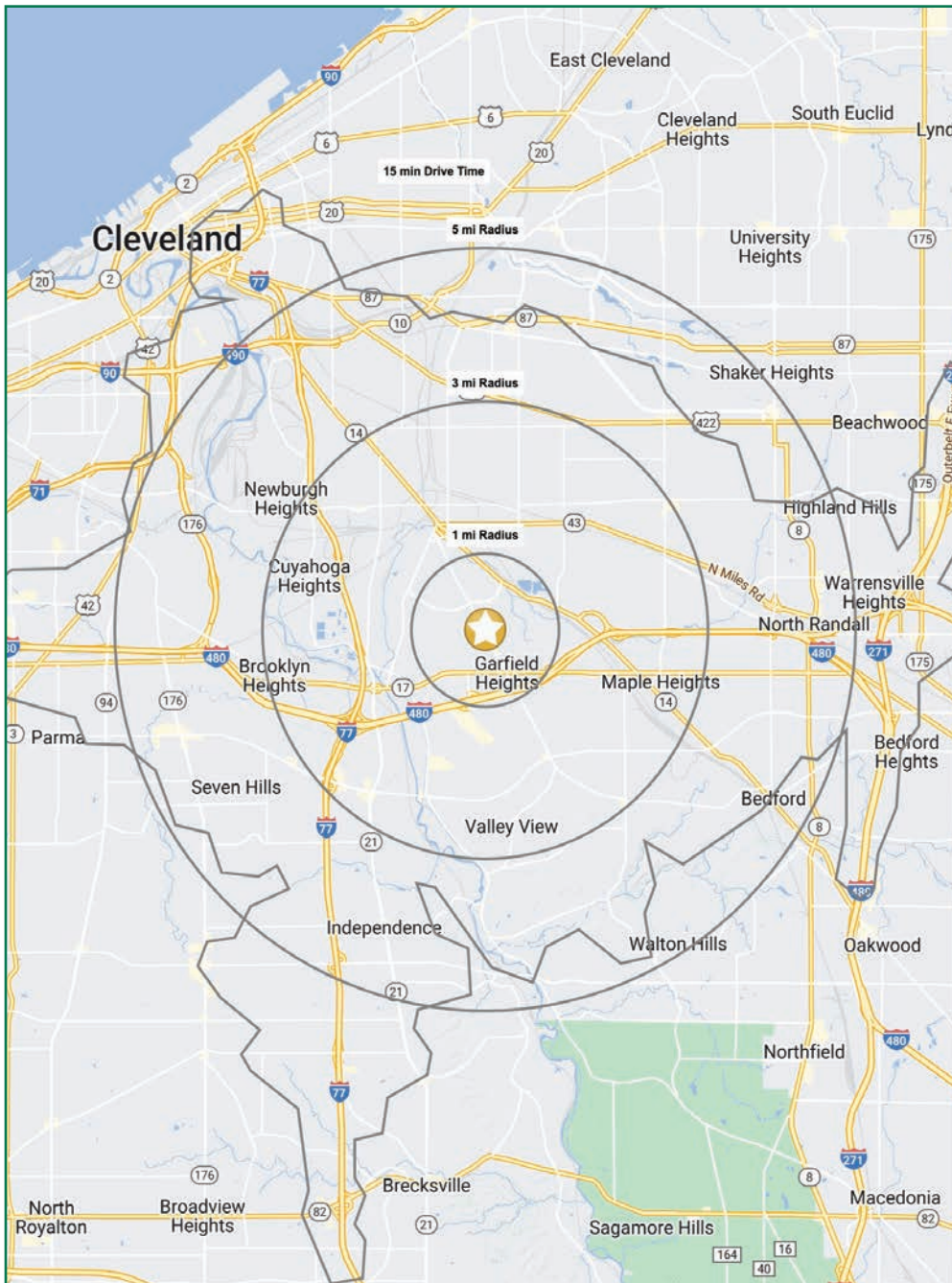
**ALLISON GIOMUSO**  
 216.342.2620  
 agiomuso@anchorcleveland.com

216.342.2523  
 www.anchorcleveland.com



# AVAILABLE FOR SALE

FORMER BANK | 5007 TURNEY ROAD GARFIELD HEIGHTS, OHIO 44125



## DEMO SNAPSHOT

	1 MILE	3 MILES	5 MILES	15 MIN DRIVE
POPULATION	14,673	88,292	235,837	277,810
HOUSEHOLDS	6,044	37,006	103,291	121,271
MEDIAN AGE	38.0	38.9	39.9	38.9
AVERAGE HH INCOME	\$114,417	\$152,096	\$124,659	\$116,563
MEDIAN HH INCOME	\$54,979	\$51,571	\$60,946	\$58,312
BUSINESSES	420	3,269	8,507	11,264
EMPLOYEES	4,614	58,097	123,399	171,909
EDUCATION: BACHELORS +	16.5%	13.3%	22.0%	20.2%

Demographics ©2021 AGS

## CONTACT

**CHRIS MCFARLAND**  
216.342.2578  
cmcfarland@anchorcleveland.com

**ALLISON GIOMUSO**  
216.342.2620  
agiomuso@anchorcleveland.com



24500 Chagrin Blvd., Suite 100 | Beachwood, Ohio 44122  
216.342.2523 | [www.anchorcleveland.com](http://www.anchorcleveland.com)

The information submitted herein is not guaranteed. Although obtained from reliable resources, it is subject to errors, omissions, prior sale and withdrawal from the market without notice. Anchor Cleveland, LLC, and its agents, associates, and employees make no guarantee, warranty, or representation of the property. All images contained here in are the property of Anchor Cleveland, LLC, and shall not be duplicated or reproduced without express written consent of Anchor Cleveland, LLC. © 2022