



COLDWELL BANKER
COMMERCIAL
BLAIR

FOR LEASE

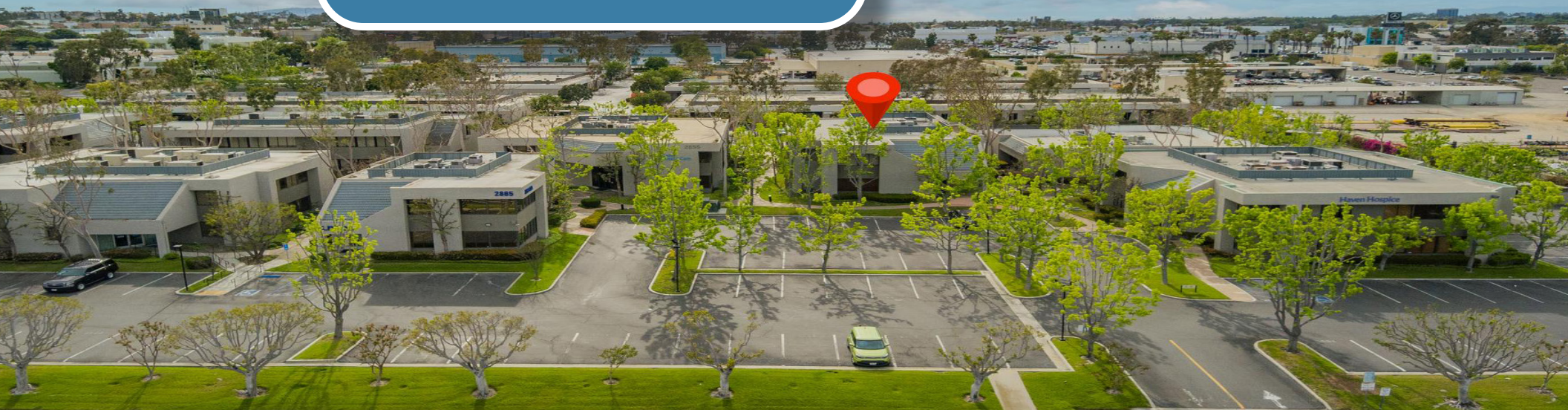
2875 TEMPLE AVENUE

SIGNAL HILL, CA 90755

**2875 TEMPLE AVENUE
SIGNAL HILL, CA**



**COLDWELL BANKER
COMMERCIAL
BLAIR**



2875 TEMPLE AVENUE

S I G N A L H I L L , C A L I F O R N I A 9 0 7 5 5

AVAILABLE:

Building SF: Approx. 8,900 RSF
Lease Rate/SF: \$1.45 - NNN
APN: 7212-005-041
Year Built: 1980
Parking Available: 34 Spaces
Zoning: LI

PROPERTY DESCRIPTION:

This free standing office building totals approximately 8,900 square feet (SF) and is located within a large number of office buildings. Great location by Long Beach Airport, with easy access to 405, 605 and 710 freeways.

© 2021 Coldwell Banker Real Estate LLC, dba Coldwell Banker Commercial Affiliates. All Rights Reserved. Coldwell Banker Real Estate LLC, dba Coldwell Banker Commercial Affiliates fully supports the principles of the Equal Opportunity Act. Each Office is Independently Owned and Operated. Coldwell Banker Commercial and the Coldwell Banker Commercial Logo are registered service marks owned by Coldwell Banker Real Estate LLC, dba Coldwell Banker Commercial Affiliates.

Coldwell Banker Commercial BLAIR WESTMAC | 333 W. Broadway, Ste. 312 | Long Beach, CA 90802 | 562.495.6070 | 562.495.6072 - fax | www.cbclair.com | BRE#: 013330395



ZONING:

This property is zoned LI, Signal Hill. The LI commercial industrial district is intended to provide for a wide variety of commercial uses and limited compatible light industrial uses. Commercial or industrial uses which might create offensive levels of noise, air pollution, glare, radioactivity or other nuisances shall be prohibited from this district. Most all office uses are permitted including medical.



2875 TEMPLE AVENUE, SIGNAL HILL

INTERIOR PHOTOS



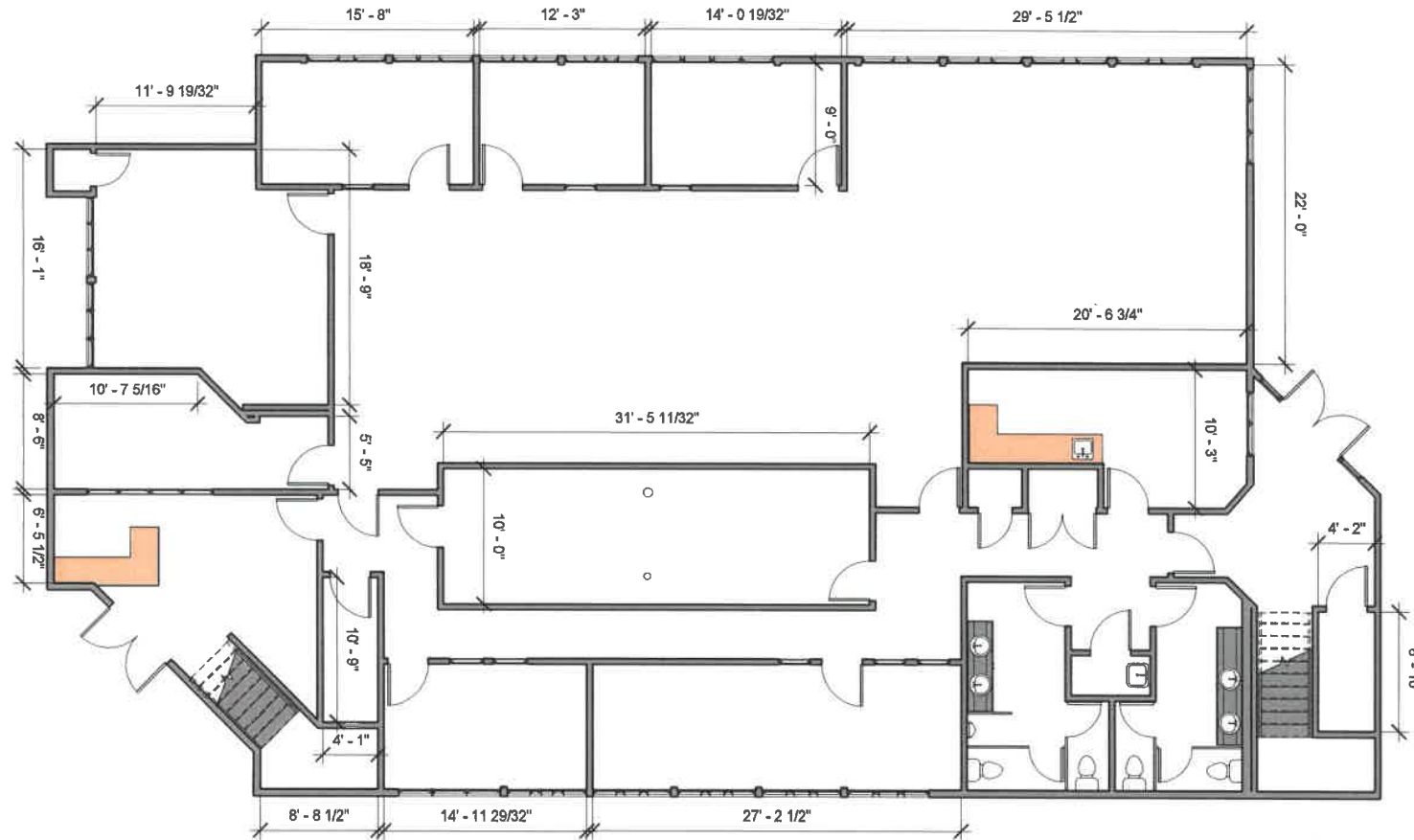
2875 TEMPLE AVENUE, SIGNAL HILL

ADDITIONAL PHOTOS



2875 TEMPLE AVENUE, SIGNAL HILL

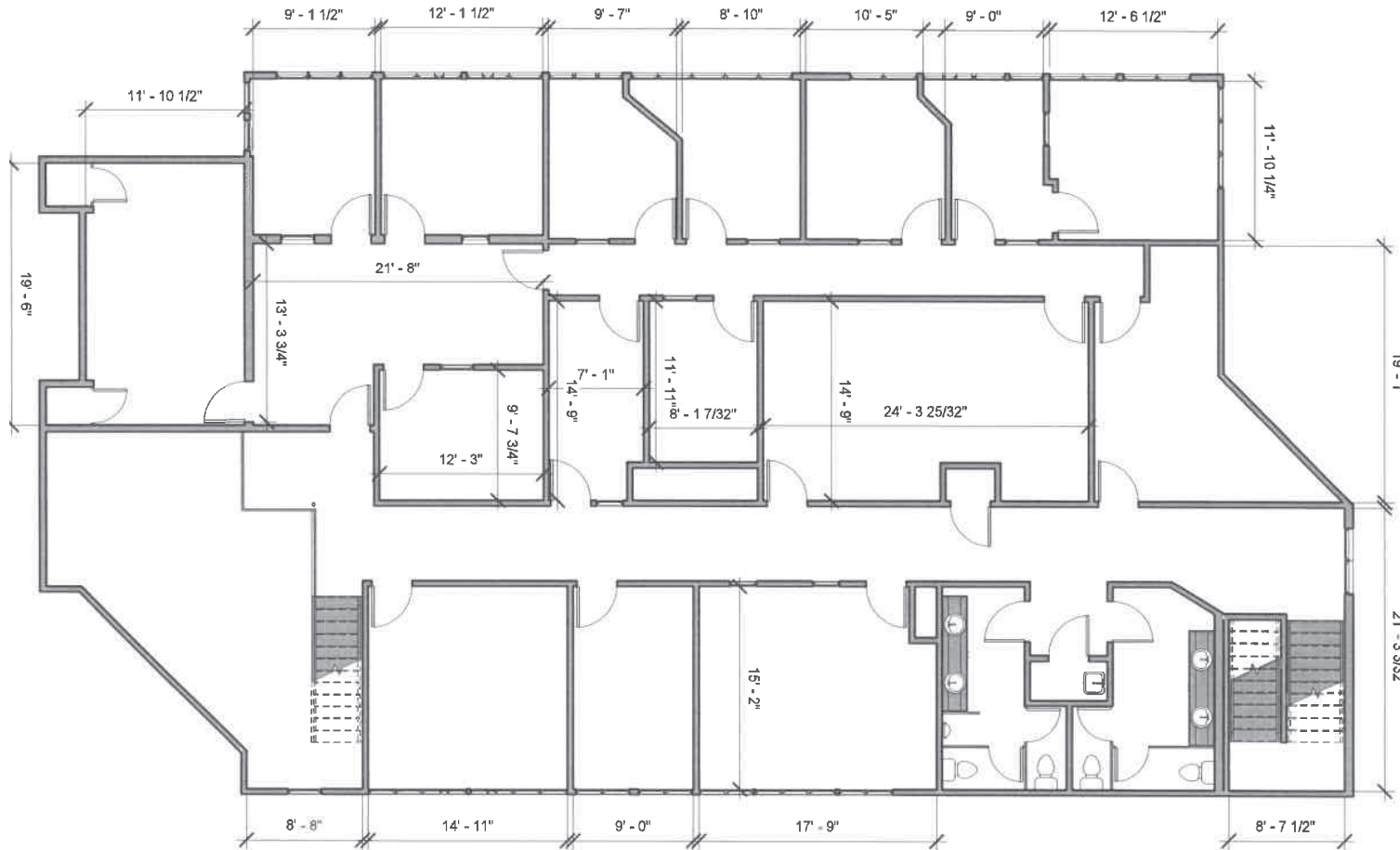
FLOOR PLAN



1ST FLOOR OFFICE PLAN

2875 TEMPLE AVENUE, SIGNAL HILL

FLOOR PLAN



2ND FLOOR OFFICE PLAN

2875 TEMPLE AVENUE, SIGNAL HILL

TRADE MAP



SPRING STREET



CHERRY AVENUE

TEMPLE AVENUE

REDONDO AVENUE

2875 TEMPLE AVENUE

C O N T A C T

Steve Warshauer

Vice President

SteveW@cbcblair.com

Direct: (562) 548-7419

Cell: (562) 397-9520

BRE#00499477

George Bustamante

President

GBustamante@cbcblair.com

Direct: (562) 548-7399

Cell: (714) 856-7017

BRE# 01484265



**COLDWELL BANKER
COMMERCIAL
BLAIR**