

50 MAIN STREET



CITY SQUARE

THE GATEWAY TO
WHITE PLAINS



WESTCHESTER'S MOST LEASED OFFICE BUILDING IN 2024

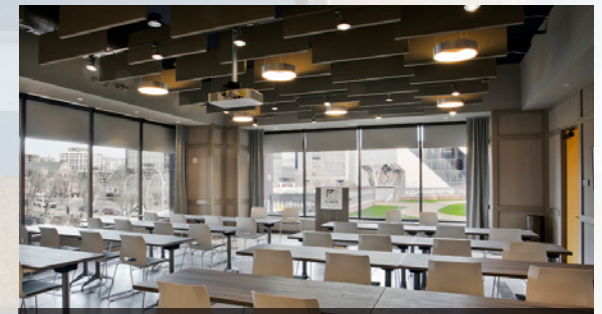


White Plains' Market Leader In Amenities

Experience The Extraordinary Transformation At City Square

50 Main Street at City Square offers an unmatched blend of culture, sophistication, and modern amenities in downtown White Plains. Featuring a striking entry sculpture, an art-inspired lobby, and curated art gallery, it exudes elegance.

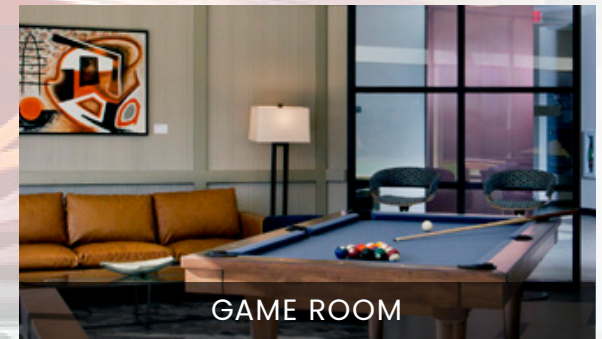
The mezzanine level boasts exclusive amenities, including a modern cafeteria with outdoor dining, fitness center, art lounge with wifi, and billiard room. Executives enjoy access to a lecture hall, private dining spaces, and an executive boardroom.



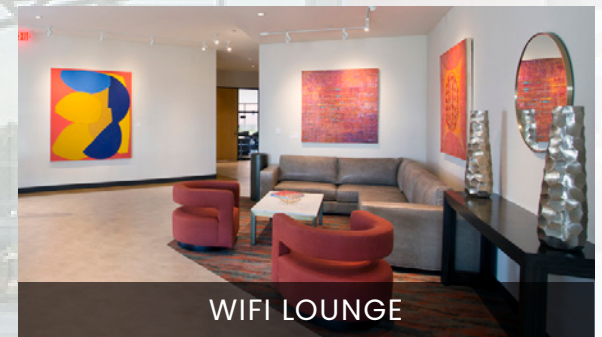
TRAINING ROOM/LECTURE HALL



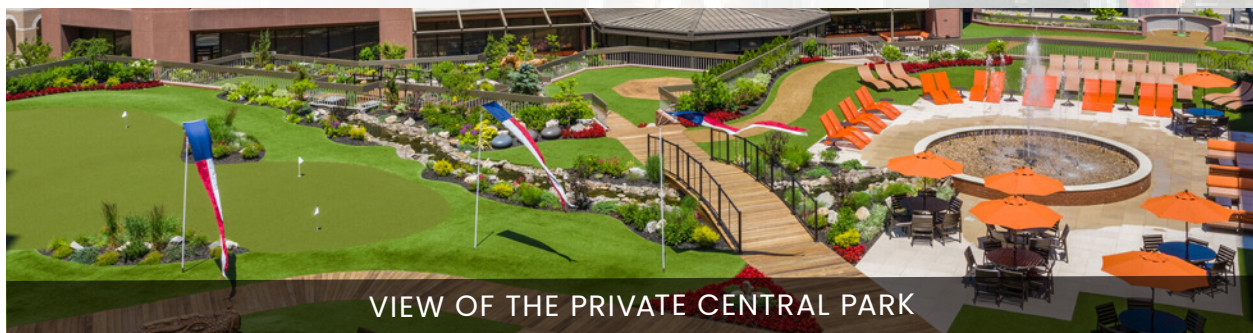
FITNESS CENTER



GAME ROOM



WIFI LOUNGE

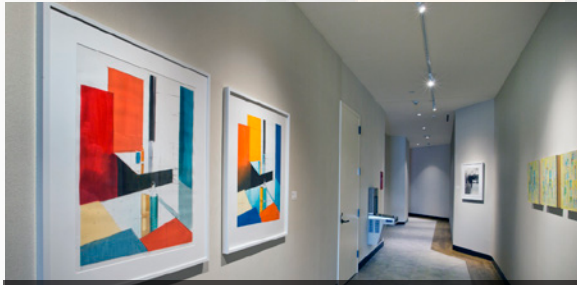


VIEW OF THE PRIVATE CENTRAL PARK

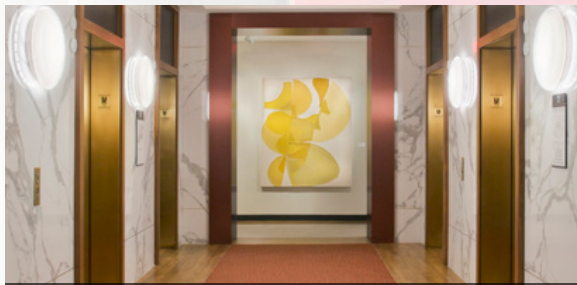




FRONT ENTRANCE SCULPTURES



CURATED ON-SITE ART GALLERY



LOBBY WITH SECURITY & KEY ACCESS



INDOOR/OUTDOOR CAFÉ



THE SHOPS AT 50 MAIN

At The Center Of Everything

A New Standard Of Excellence In The White Plains Office Market

City Square at 50 Main Street redefines work-life balance with exceptional indoor and outdoor amenities, including a putting green, bocce ball court, billiard room, and state-of-the-art golf simulator. Employees enjoy stylish lobby lounges, a daily cafe with indoor and outdoor dining, and upcoming retail options like Yoga 6, Maison Brondeau wines, and Main Street Gourmet Market.

The on-site art gallery, curated by Arts Westchester, showcases works by local and national artists, blending creativity and sophistication. City Square creates a vibrant environment where work meets leisure, making it a truly unique office address in White Plains.



Convenience, Luxury, and Lifestyle

A Seamless Blend of Live, Work, and Play.

At 50 Main Street, convenience meets sophistication in the heart of White Plains. With **24/7 covered garage access**, secure keycard entry, and on-site management, tenants and visitors enjoy peace of mind along with unparalleled accessibility.

The ground-floor retail options cater to every need—grab a bottle of fine wine from the **Maison Brondeau** boutique wine store, perfect your swing at **GolfTec**, center yourself at **YogaSix**, or shop artisanal selections at **Main Street Gourmet Market**.

Medi Bistro, located in the lobby, invites you to savor Mediterranean and Persian inspired dishes in a sophisticated setting.

Whether it's work, relaxation, or indulgence, 50 Main Street delivers a seamless urban lifestyle in a prime location.



GOURMET MARKET



GOLF LESSONS & CLUB FITTING



LUXURY WINE STORE



MEDI BISTRO



24/7 COVERED GARAGE



FITNESS STUDIO



Private 2 Acre Rooftop Park



Walk To Work Options

Apartments at the Metro and 1-11 Martine Avenue offer unmatched convenience, with unparalleled amenities and everyday essentials. Walk to work through the indoor garage that connects all City Square buildings



CITY SQUARE 50 MAIN ST. | WHITE PLAINS, NY

LEGEND

1. PARK ENTRANCE
2. FOUNTAIN COURT
3. BARBECUE AND HERB GARDEN
4. STREAM
5. DRAGON
6. PUTTING
7. BANDSTAND
8. HORSE
9. YOGA
10. CITY SQUARE CAFE
11. BOCCIE
12. TRIFITNESS
13. AB STATION
14. DUAL HIP STATION
15. EXIT TO BANK STREET



QUIET PRIVATE SPACES



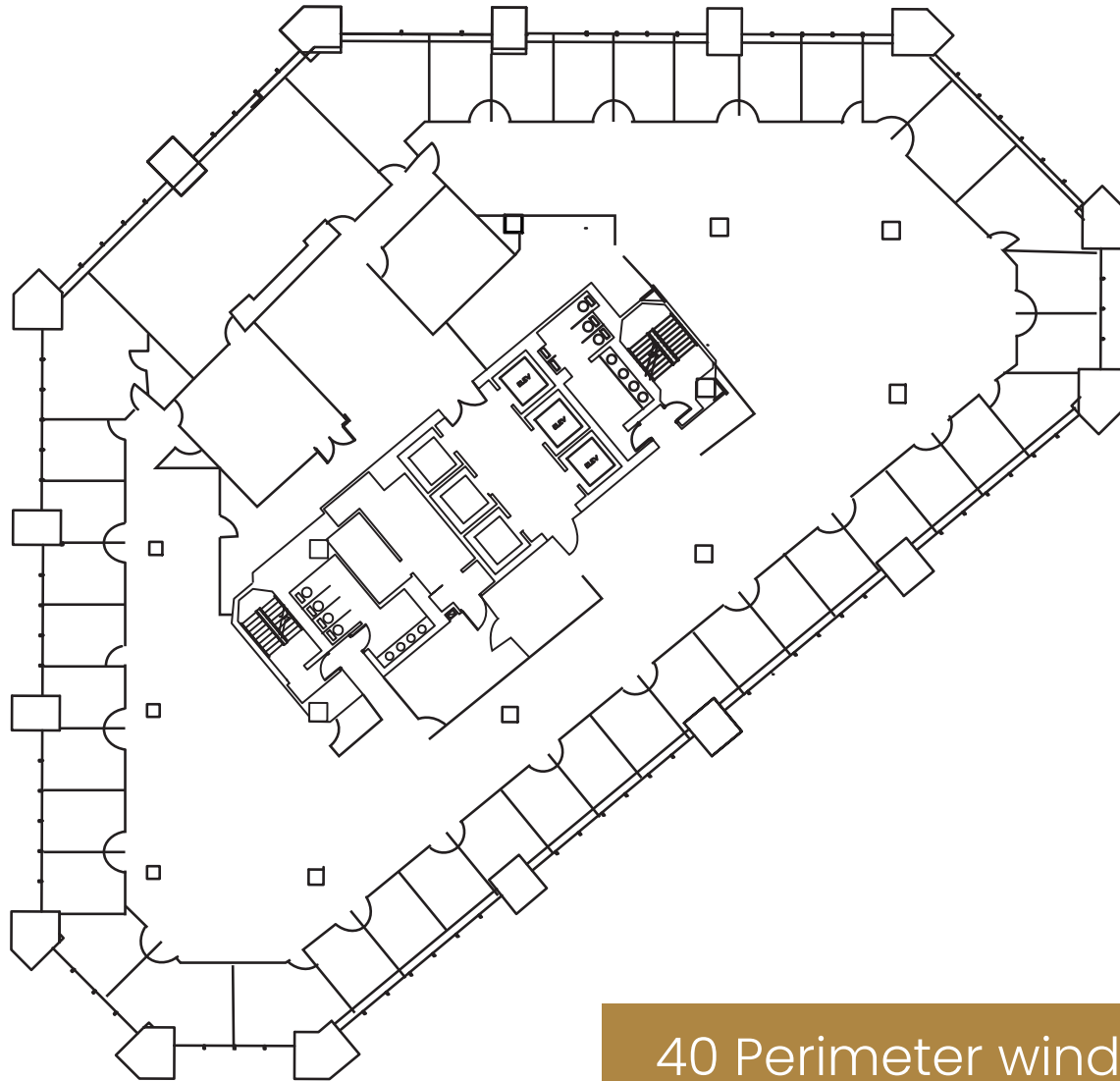
FOUNTAIN COURT



OUTDOOR DINING

5TH Floor Plan

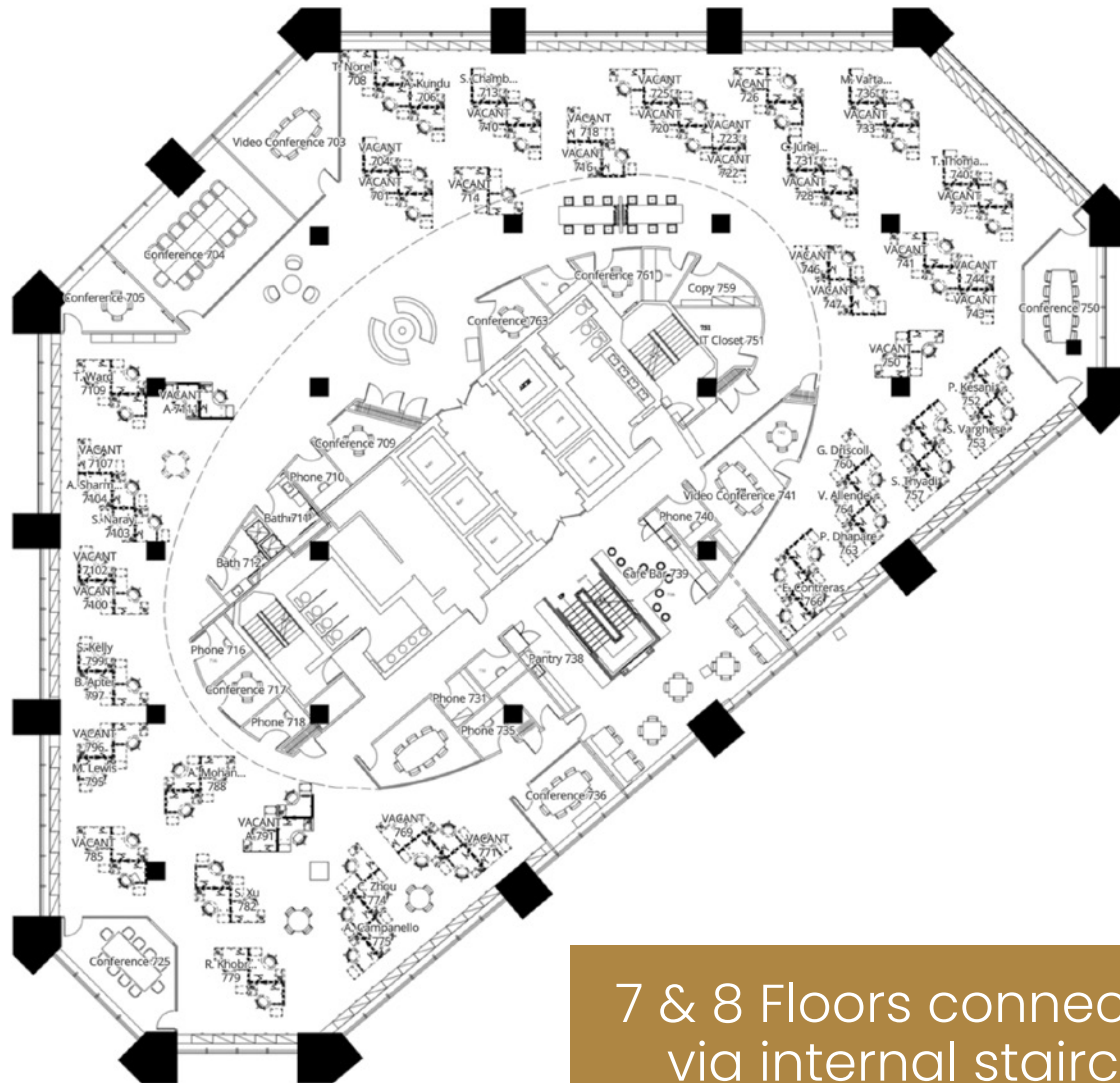
Reserved For Law Firm



40 Perimeter windowed offices



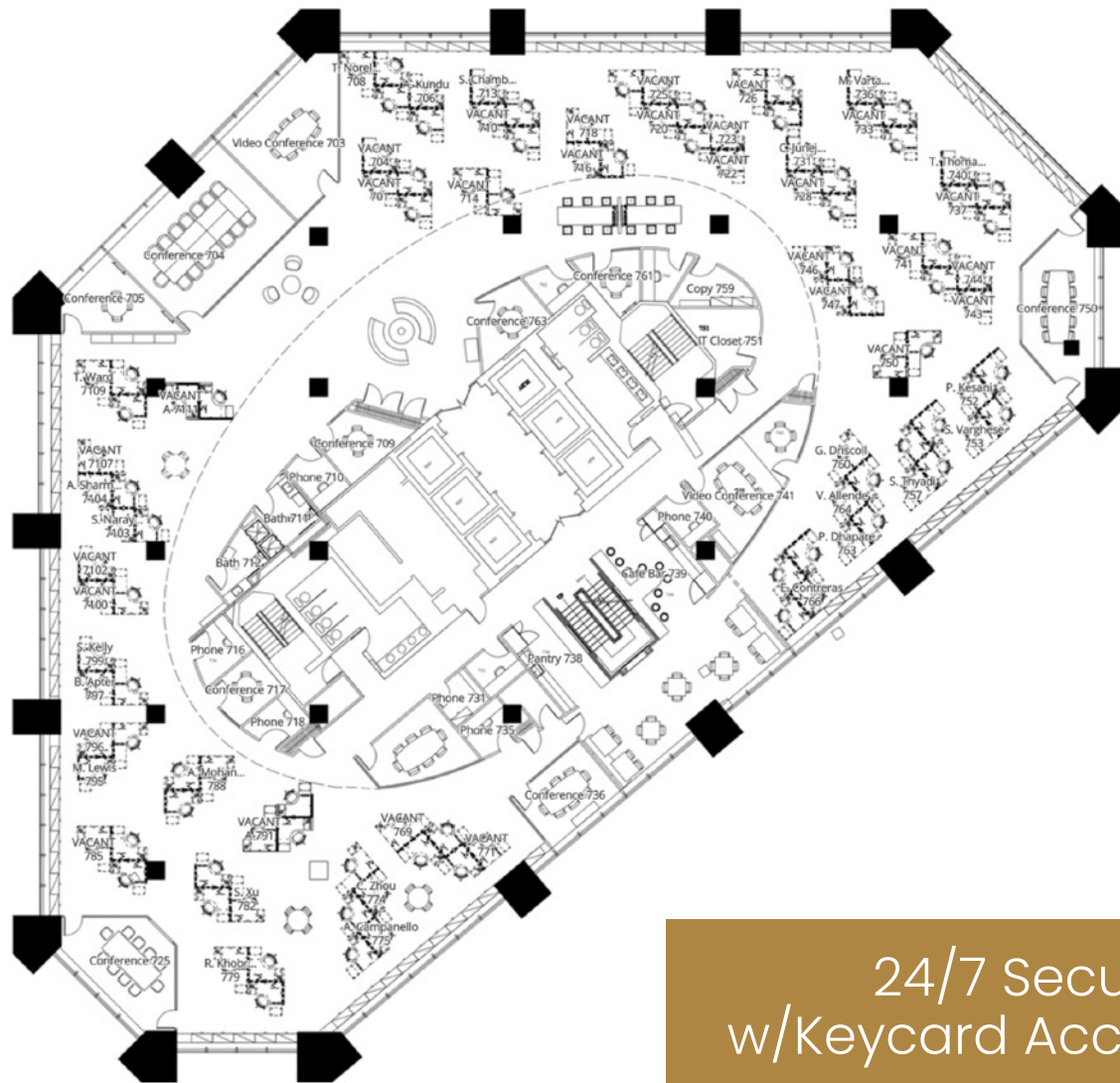
7TH Floor Plan



7 & 8 Floors connected via internal staircase



8TH Floor Plan



24/7 Security
w/Keycard Access



Availability



46,276 RSF CONTIGUOUS

FLOOR | TOTAL SF

16	23,138	LEASED		
15	23,151	LEASED		
14	23,149	LEASED		
12	23,149	LEASED		
11	23,138	LEASED		
10	23,138	LEASED		
9	23,145	2,981 RSF*	2,946 RSF*	
8	23,138	23,138 RSF		
7	23,138	23,138 RSF		
6	23,138	LEASED		
5	23,138	23,138 RSF - RESERVED FOR LAW FIRM		
4	23,148	LEASED		
3	23,143	LEASED		
2	mezzanine	CAFE AND AMENITIES		

* = TWO PRE-BUILT SUITES UNDER CONSTRUCTION



Area Map

100+ restaurants, bars and cafes with a wide range of cuisines

34 minutes to Manhattan on Metro North Railroad

7 minutes away from I-287 & the Cross Westchester Expressway



SITE





Neighborhood Highlights

City Square is conveniently located in the heart of White Plains and is steps away from great restaurants, hotels with conference facilities and award-winning shopping. Surrounded by thousands of residential units, City Square is a short walk from the Federal District Courthouse, Westchester County Courthouse, public library and recreational facilities.

This prime gateway location is across the street from the White Plains Metro-North train station which offers a 34-minute express ride to Grand Central Station. There is also regional and local bus service nearby at the newly renovated White Plains Intermodal Transportation Center as well as quick access to the Bronx River Parkway, I-287, and I-87 and the regional highway network.

Westchester County Airport is 15 minutes from the property.



WESTCHESTER COUNTY AIRPORT



MAMARONECK AVENUE SHOPS AND RESTAURANTS



OPUS WESTCHESTER



THE WESTCHESTER MALL



FARMERS MARKET



ARTSWESTCHESTER



METRO NORTH



50 MAIN STREET



CITY SQUARE

THE GATEWAY TO WHITE PLAINS



CONTACT EXCLUSIVE LISTING AGENTS:

CHRIS O'CALLAGHAN

914.968.8500 X 342

cocallaghan@rmfriedland.com

ROBERT TAYLOR

914.968.8500 x 341

rtaylor@rmfriedland.com

WWW.CITYSQUAREWHITEPLAINS.COM

NEW YORK | CONNECTICUT | RMFRIEDLAND.COM | 914.968.8500

All information contained herein is based upon information which we consider reliable, but because it has been supplied by third parties, we cannot represent that it is accurate or complete, and it should not be relied upon as such. The offerings are subject to errors, omissions, changes, including price, or withdrawal without notice. The content is provided without warranties of any kind, either express or implied. RM Friedland, LLC, its agents or employees shall not be held liable to anyone for any errors, omissions or inaccuracies under any circumstances. You and your advisors should conduct a careful, independent examination of the property to determine to your satisfaction the suitability of the property for your needs.