

# SOUTH WESTCHESTER EXECUTIVE PARK

6 Executive Plaza, Yonkers, NY



**5,323 RSF AVAILABLE**

## CONTACT EXCLUSIVE AGENTS

William Anson  
wanson@rmfriedland.com  
914.968.8500 ext 329

Jillian Reiner  
jreiner@rmfriedland.com  
914.968.8500 ext 343

**RM FRIEDLAND**

COMMERCIAL REAL ESTATE SERVICES

440 Mamaroneck Ave | Harrison, NY 10528 | [rmfriedland.com](http://rmfriedland.com) | 914.968.8500

**5,323 RSF AVAILABLE**

# SOUTH WESTCHESTER EXECUTIVE PARK

6 Executive Plaza, Yonkers, NY

## CURRENT CONFIGURATION

**WAREHOUSE:** 1,375 RSF\*

**OFFICE:** 3,948 RSF\*

*\*All spaces can be reconfigured to meet tenant's requirement*

## LOADING:

1 Dock

## CEILING HEIGHT:

15' Feet

## MISC:

Air Conditioned, Sprinklers, gas, and separate meters

## TRANSPORTATION:

Easy access to NYST—I-87, Saw Mill River, Sprain & Cross County Parkways, Bus, Rte. 9, and Metro North Train

## NEIGHBORHOOD:

Convenient to hotels, restaurants, local shopping and services

## CONTACT:

William Anson

914.968.8500 ext 329

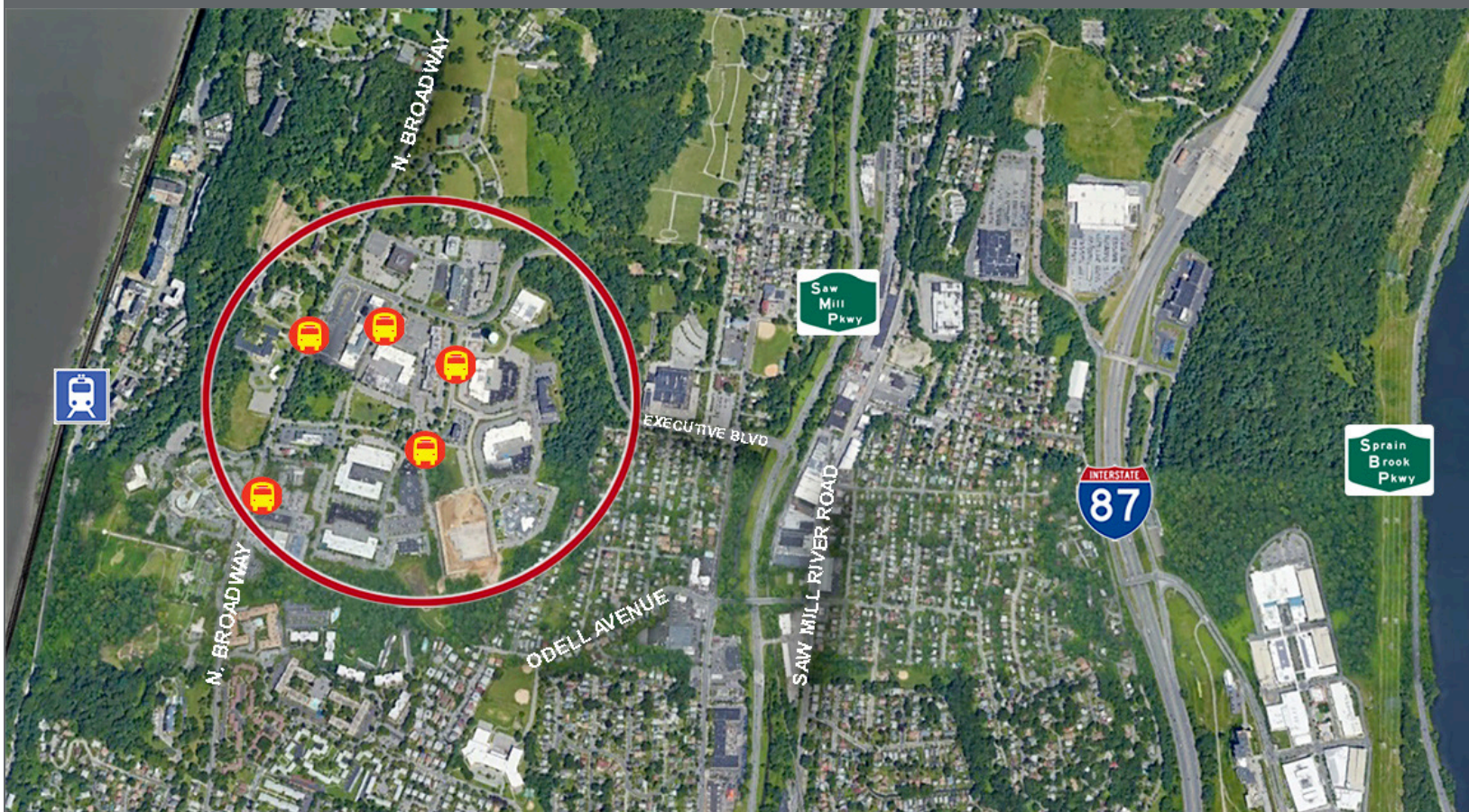
Jillian Reiner

914.968.8500 ext 343



# SOUTH WESTCHESTER EXECUTIVE PARK

6 Executive Plaza, Yonkers, NY



## CONTACT EXCLUSIVE AGENTS

William Anson  
wanson@rmfriedland.com  
914.968.8500 ext 329

Jillian Reiner  
jreiner@rmfriedland.com  
914.968.8500 ext 343

**RM FRIEDLAND**

COMMERCIAL REAL ESTATE SERVICES

440 Mamaroneck Ave | Harrison, NY 10528 | [rmfriedland.com](http://rmfriedland.com) | 914.968.8500

All information contained herein is based upon information which we consider reliable, but because it has been supplied by third parties, we cannot represent that it is accurate or complete, and it should not be relied upon as such. The offerings are subject to errors, omissions, changes, including price, or withdrawal without notice. The content is provided without warranties of any kind, either express or implied. RM Friedland, LLC, its agents or employees shall not be held liable to anyone for any errors, omissions or inaccuracies under any circumstances. You and your advisors should conduct a careful, independent examination of the property to determine to your satisfaction the suitability of the property for your needs.