

CROSS WESTCHESTER EXECUTIVE PARK

85 Executive Blvd., Elmsford, NY



**25,000 RSF (DIVISIBLE)
AVAILABLE**

CONTACT EXCLUSIVE LISTING AGENTS:

WILLIAM ANSON
914.968.8500 X 329
WANSON@RMFRIEDLAND.COM

KEVIN LANGTRY
914.968.8500 X 322
KLANGTRY@RMFRIEDLAND.COM

RM FRIEDLAND

COMMERCIAL REAL ESTATE SERVICES

NEW YORK | CONNECTICUT | RMFRIEDLAND.COM | 914.968.8500

25,000 RSF (DIVISIBLE) AVAILABLE

CROSS WESTCHESTER EXECUTIVE PARK

85 Executive Blvd, Elmsford, NY

CURRENT CONFIGURATION

TWO LEVEL

BUILDING: 25,000 RSF*

**DIVISIBLE All spaces can be reconfigured to meet tenant's requirement*

LOADING:

Upper Level: 1 Dock

Lower Level: Drive In

MISC:

Sprinklers, gas, and separate meters

TRANSPORTATION:

Easy access to NYST—
I-87, Cross Westchester
Expressway—I-287, Saw Mill
River & Sprain Parkways,
Rte 9A and Bus

NEIGHBORHOOD:

Convenient to hotels,
restaurants, local shopping
and services

CONTACT:

William Anson

914.968.8500 ext 329

Kevin Langtry

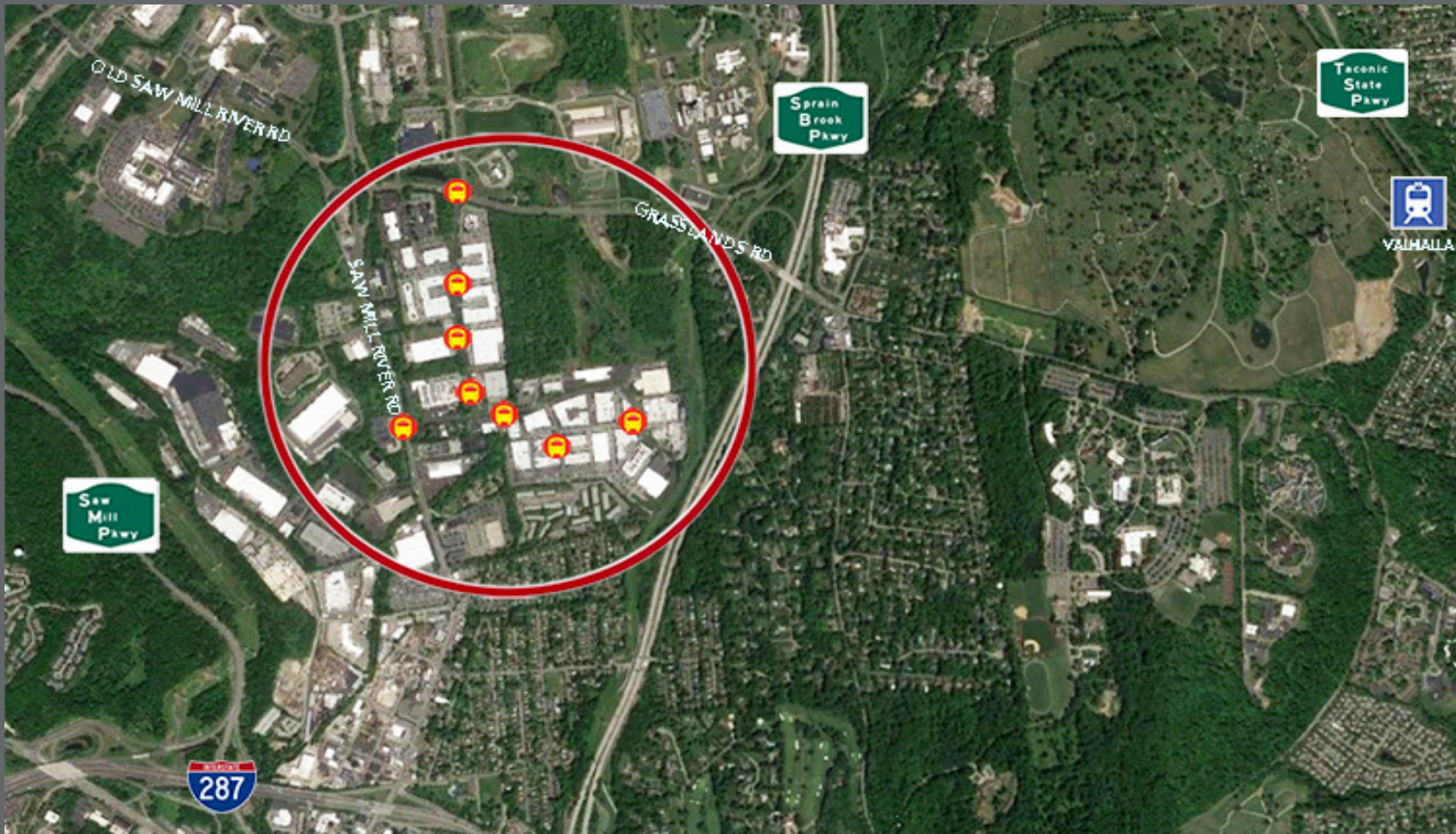
914.968.8500 ext 322



25,000 RSF (DIVISIBLE) AVAILABLE

CROSS WESTCHESTER EXECUTIVE PARK

85 Executive Blvd, Elmsford, NY



CONTACT EXCLUSIVE LISTING AGENTS:

WILLIAM ANSON
914.968.8500 X 329
WANSON@RMFRIEDLAND.COM

KEVIN LANGTRY
914.968.8500 X 322
KLANGTRY@RMFRIEDLAND.COM

RM FRIEDLAND

COMMERCIAL REAL ESTATE SERVICES

440 Mamaroneck Ave | Harrison, NY 10528 | rmfriedland.com | 914.968.8500

All information contained herein is based upon information which we consider reliable, but because it has been supplied by third parties, we cannot represent that it is accurate or complete, and it should not be relied upon as such. The offerings are subject to errors, omissions, changes, including price, or withdrawal without notice. The content is provided without warranties of any kind, either express or implied. RM Friedland, LLC, its agents or employees shall not be held liable to anyone for any errors, omissions or inaccuracies under any circumstances. You and your advisors should conduct a careful, independent examination of the property to determine to your satisfaction the suitability of the property for your needs.