

1
ONE
BARKER
AVENUE



FINE DINING | SHOPPING | HOSPITALITY | MASS TRANSIT

EXPERIENCE THE VITALITY OF WHITE PLAINS

1 BARKER AVENUE

SO CONVENIENT

- 3 blocks from Train Station
- 2 blocks to Greyhound Bus Station
- 2 minutes to Bronx River Parkway
- Convenient on-site parking

SO CENTRAL

- Close to Residence Inn by Marriott
- Walking distance to casual and fine dining restaurants
- Steps to Shopping & Entertainment

SO ACCOMODATING

- Competitively Priced
- Efficient Floor Plates
- Flexible configurations for any size business

Contact Exclusive Agent:

Herschel Halesworth

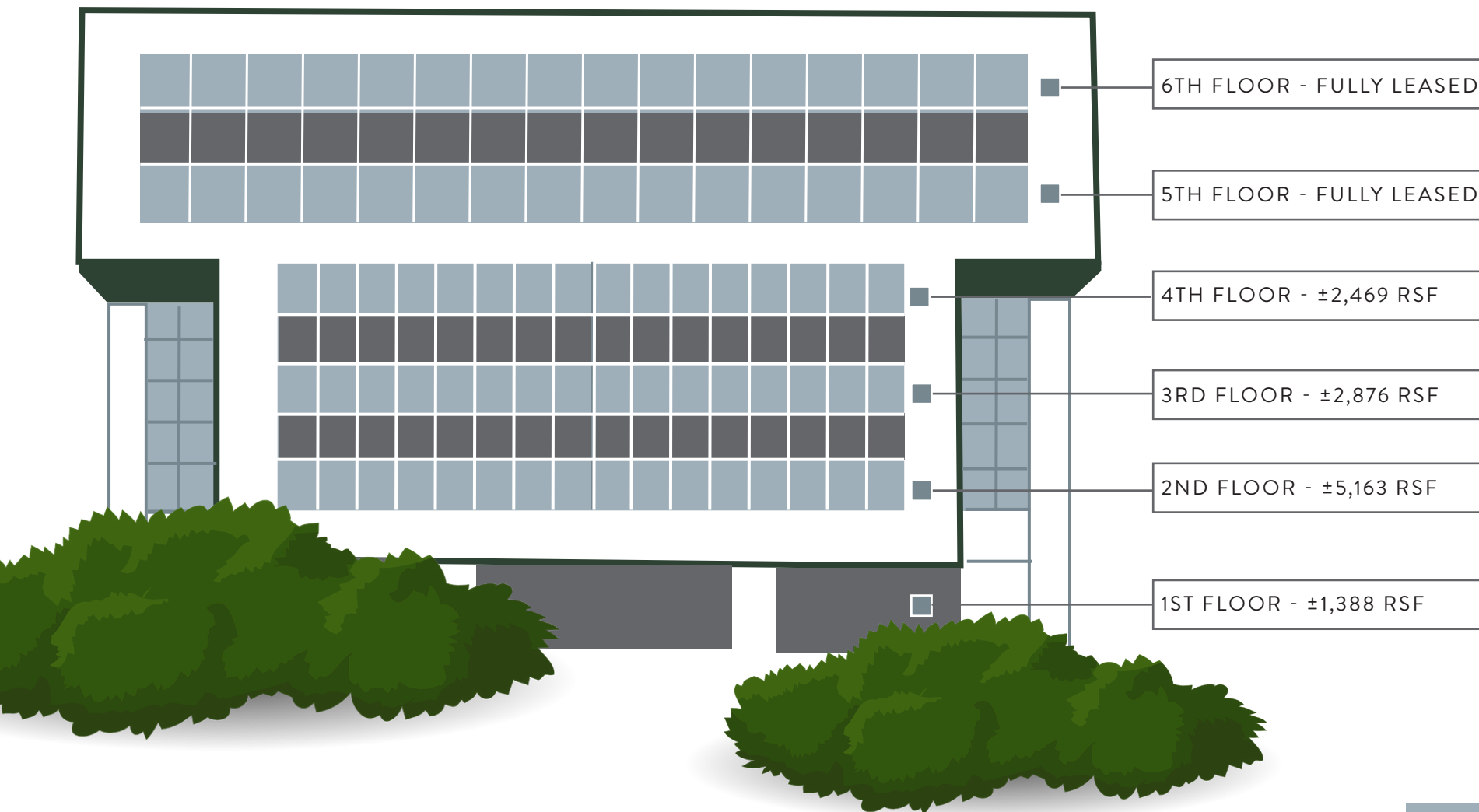
T: 914.968.8500 x 301

E: halesworth@rmfriedland.com



1 ONE BARKER AVENUE

AVAILABLE SPACE



All information contained herein is based upon information which we consider reliable, but because it has been supplied by third parties, we cannot represent that it is accurate or complete, and it should not be relied upon as such. The offerings are subject to errors, omissions, changes, including price, or withdrawal without notice. The content is provided without warranties of any kind, either express or implied. RM Friedland, LLC, its agents or employees shall not be held liable to anyone for any errors, omissions or inaccuracies under any circumstances. You and your advisors should conduct a careful, independent examination of the property to determine to your satisfaction the suitability of the property for your needs.

ONE BARKER AVENUE



BUSINESS

Skadden, Arps, Slate,
Meagher & Flom
Northwestern Mutual
Cuddy & Feder
Greenberg Traurig
Heineken
Cravath, Swaine & Moore
Jackson Lewis P.C.
New York Life
Bleakley Platt & Schmidt
Power Authority



RESTAURANTS

Serafina Restaurant
La Bocca
Mediterraneo Restaurant
Starbucks
BLT Steakhouse
Mulino's
Hudson Grille
Morton's Steakhouse



HOSPITALITY

Residence Inn
Marriott White Plains
Marriott International
Autograph Collection
Cambria Hotel
White Plains
Sonesta White Plains



HOSPITAL

White Plains Hospital



TRANSIT

White Plains Train
(Harlem Line)

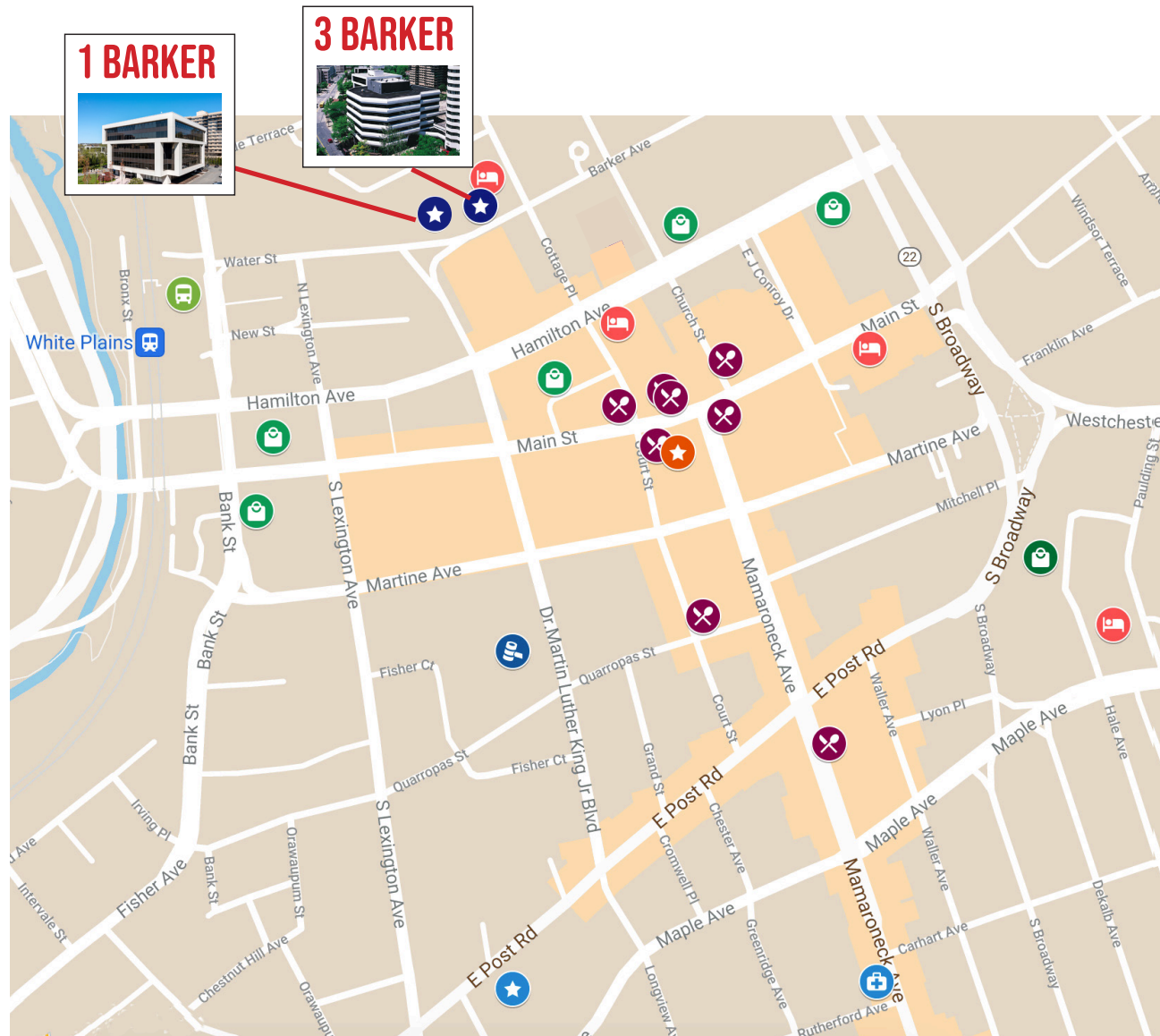


Greyhound Bus



MISC

Westchester County
Courthouse



Contact Exclusive Agent:

Herschel Halesworth

T: 914.968.8500 x 301

E: halesworth@rmfriedland.com

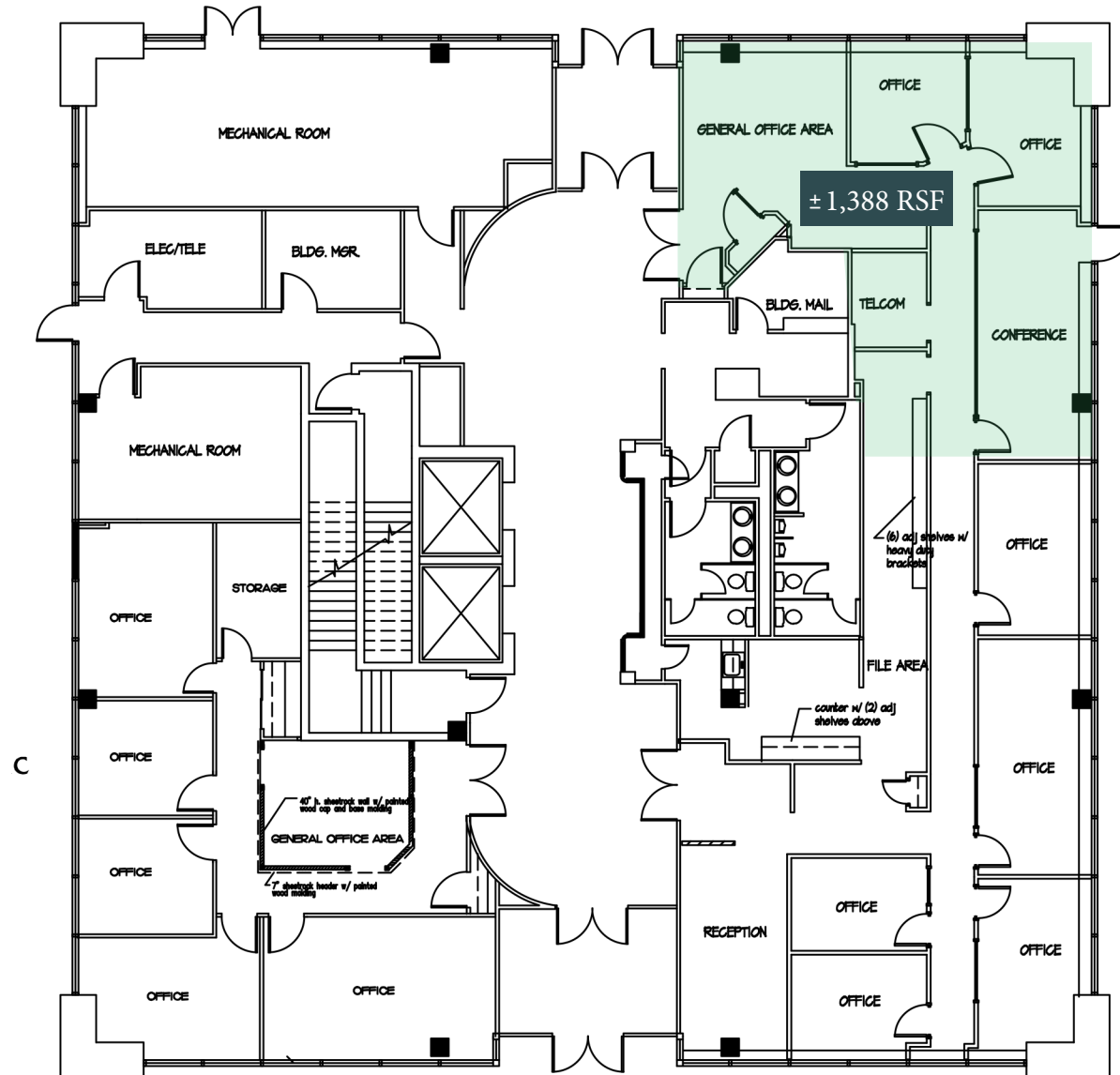
All information contained herein is based upon information which we consider reliable, but because it has been supplied by third parties, we cannot represent that it is accurate or complete, and it should not be relied upon as such. The offerings are subject to errors, omissions, changes, including price, or withdrawal without notice. The content is provided without warranties of any kind, either express or implied. RM Friedland, LLC, its agents or employees shall not be held liable to anyone for any errors, omissions or inaccuracies under any circumstances. You and your advisors should conduct a careful, independent examination of the property to determine to your satisfaction the suitability of the property for your needs.

1ST FLOOR

VACANT

±1,388 RSF TOTAL

±1,388 RSF



2ND FLOOR

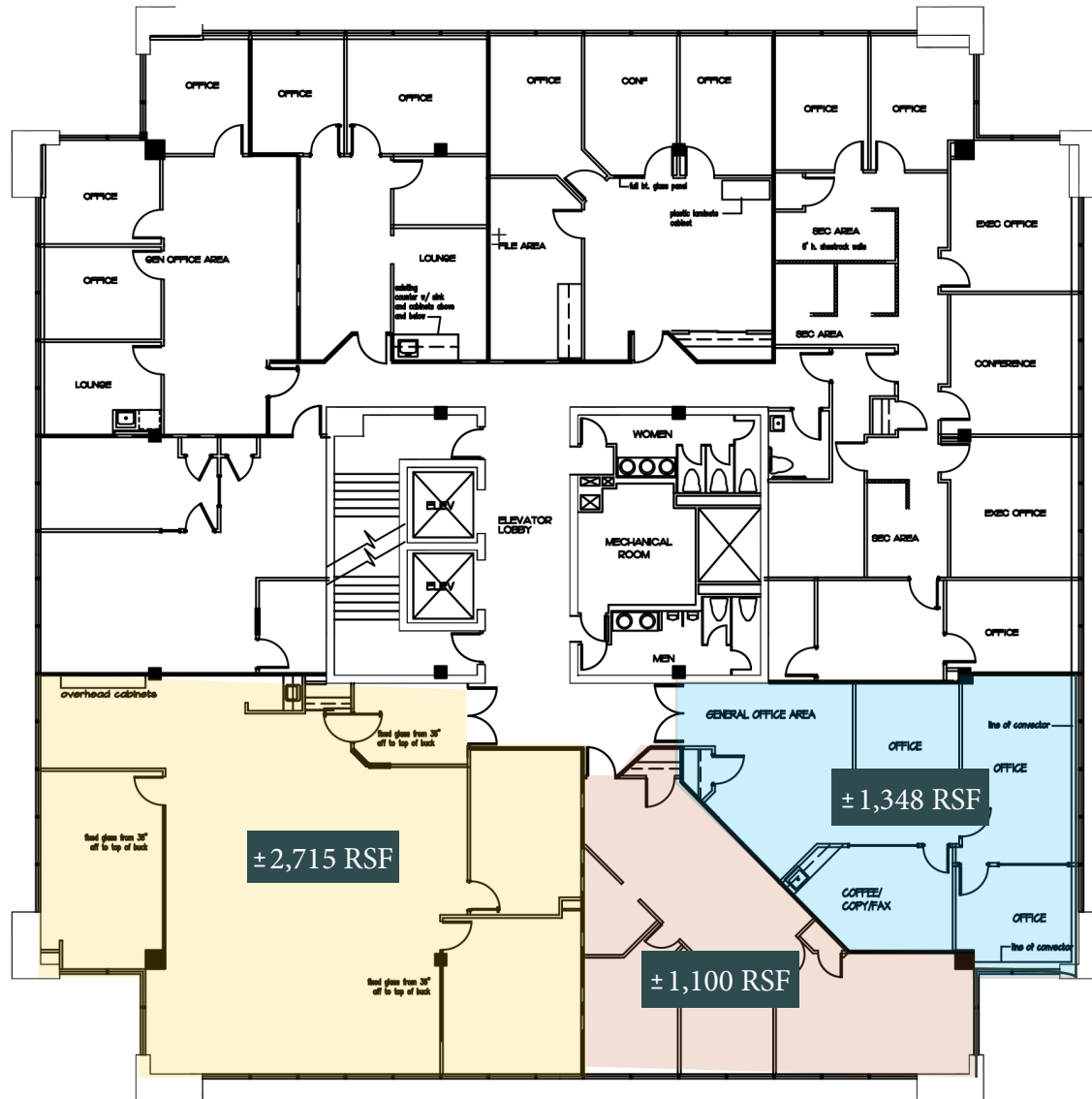
VACANT

±5,163 RSF TOTAL

±1,348 RSF

±1,100 RSF

±2,715 RSF



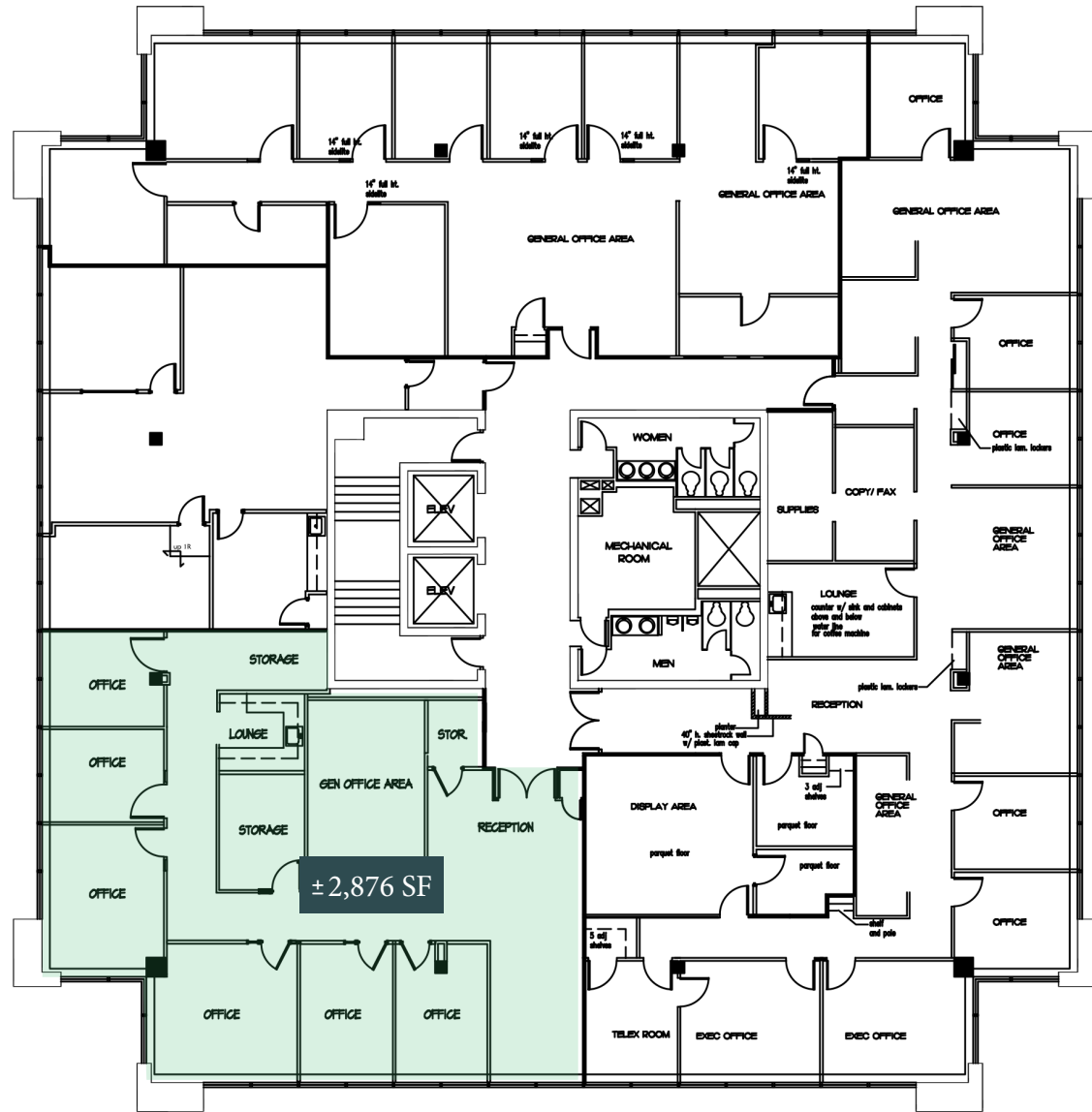
3RD FLOOR

VACANT

±2,876 RSF TOTAL



±2,876 RSF



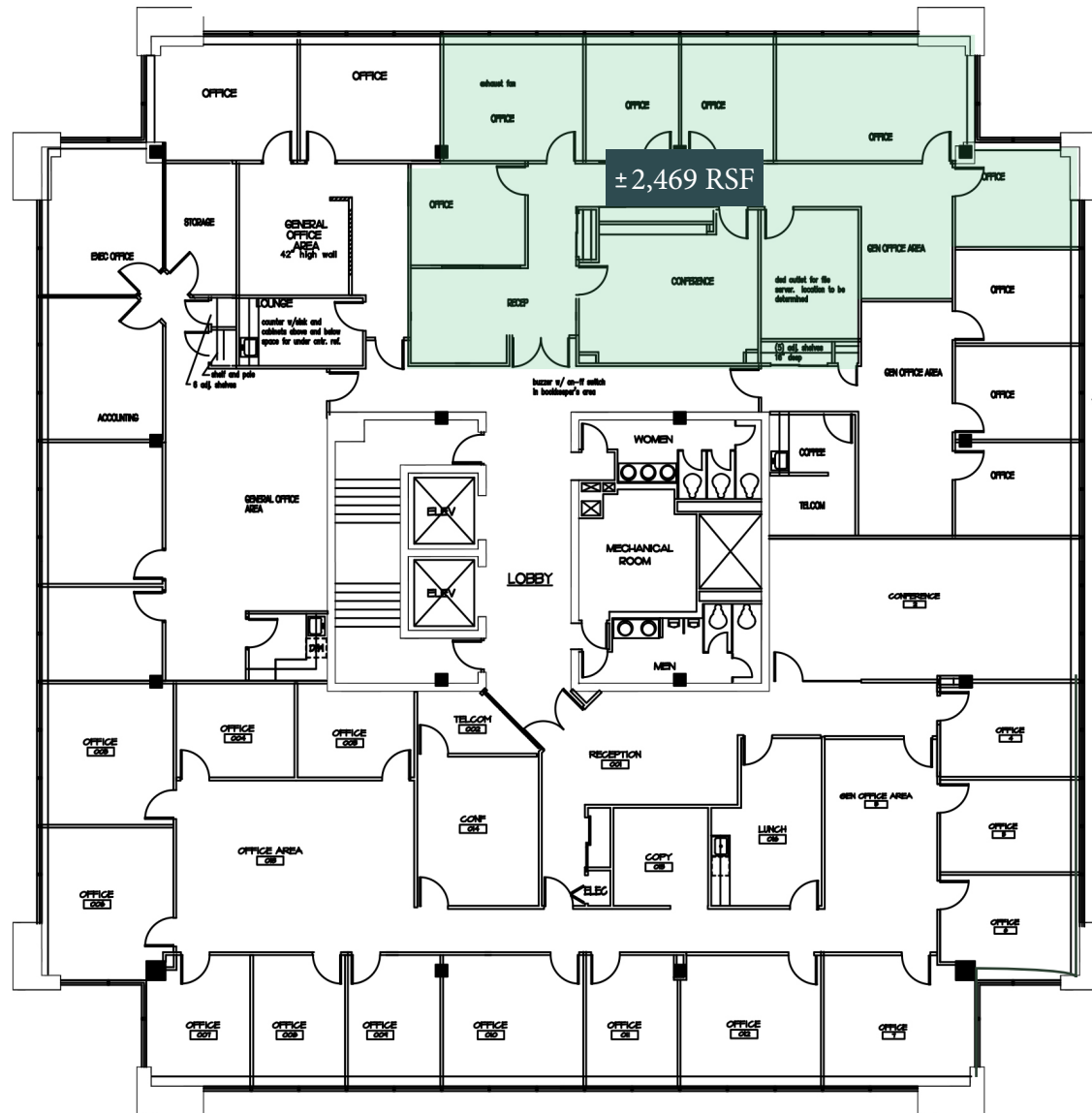
4TH FLOOR

VACANT

±2,469 RSF TOTAL



±2,469 RSF





1
ONE

BARKER
AVENUE

CONTACT EXCLUSIVE AGENT
HERSCHEL HALESWORTH
914.968.8500 x 301
hhalesworth@rmfriedland.com



All information contained herein is based upon information which we consider reliable, but because it has been supplied by third parties, we cannot represent that it is accurate or complete, and it should not be relied upon as such. The offerings are subject to errors, omissions, changes, including price, or withdrawal without notice. The content is provided without warranties of any kind, either express or implied. RM Friedland, LLC, its agents or employees shall not be held liable to anyone for any errors, omissions or inaccuracies under any circumstances. You and your advisors should conduct a careful, independent examination of the property to determine to your satisfaction the suitability of the property for your needs.