

100
Clearbrook
ROAD

CROSS WESTCHESTER EXECUTIVE PARK

ELMSFORD, NEW YORK



NEW YORK | CONNECTICUT | RMFRIEDLAND.COM | 914.968.8500

FOR LEASE

All information contained herein is based upon information which we consider reliable, but because it has been supplied by third parties, we cannot represent that it is accurate or complete, and it should not be relied upon as such. The offerings are subject to errors, omissions, changes, including price, or withdrawal without notice. The content is provided without warranties of any kind, either express or implied. RM Friedland, LLC, its agents or employees shall not be held liable to anyone for any errors, omissions or inaccuracies under any circumstances. You and your advisors should conduct a careful, independent examination of the property to determine to your satisfaction the suitability of the property for your needs.

100
Clearbrook
ROAD

CROSS WESTCHESTER EXECUTIVE PARK
ELMSFORD, NEW YORK

FIRST FLOOR
1,570 RSF

FIRST FLOOR
4,531 RSF

SECOND FLOOR
7,130 RSF
DIVISIBLE

THIRD FLOOR
4,125 RSF

RENTAL RATE
Upon Request

BUILDING SIZE
60,000 SF

PARKING
3/1000

AMENITIES

Bank and On-Site Property Management

LOCATION

Directly across from New York Medical
College Campus at Westchester
Medical Center.

Bus stop located across the Street.

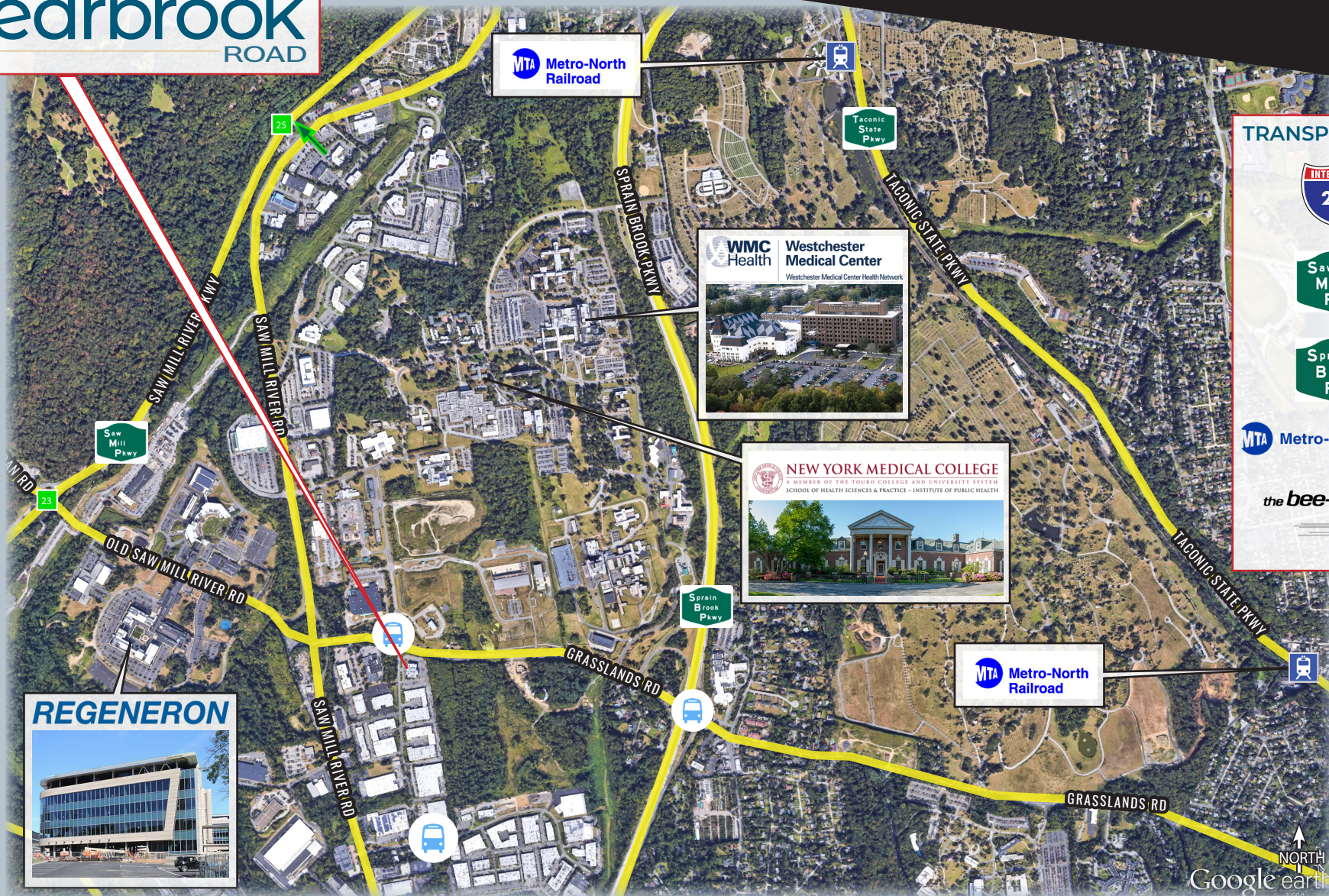


NEW YORK | CONNECTICUT | RMFRIEDLAND.COM | 914.968.8500

All information contained herein is based upon information which we consider reliable, but because it has been supplied by third parties, we cannot represent that it is accurate or complete, and it should not be relied upon as such. The offerings are subject to errors, omissions, changes, including price, or withdrawal without notice. The content is provided without warranties of any kind, either express or implied. RM Friedland, LLC, its agents or employees shall not be held liable to anyone for any errors, omissions or inaccuracies under any circumstances. You and your advisors should conduct a careful, independent examination of the property to determine to your satisfaction the suitability of the property for your needs.

100 Clearbrook ROAD

CROSS WESTCHESTER EXECUTIVE PARK
ELMSFORD, NEW YORK



TRANSPORTATION



VTA Metro-North Railroad

the bee-line system



RMF
OFFICE

NEW YORK | CONNECTICUT | RMFRIEDLAND.COM | 914.968.8500

All information contained herein is based upon information which we consider reliable, but because it has been supplied by third parties, we cannot represent that it is accurate or complete, and it should not be relied upon as such. The offerings are subject to errors, omissions, changes, including price, or withdrawal without notice. The content is provided without warranties of any kind, either express or implied. RM Friedland, LLC, its agents or employees shall not be held liable to anyone for any errors, omissions or inaccuracies under any circumstances. You and your advisors should conduct a careful, independent examination of the property to determine to your satisfaction the suitability of the property for your needs.

CROSS WESTCHESTER EXECUTIVE PARK
ELMSFORD, NEW YORK



CONTACT EXCLUSIVE AGENTS:

Chris O'Callaghan

914.968.8500 x342

cocallaghan@rmfriedland.com

Jillian Reiner

914.968.8500 x343

jreiner@rmfriedland.com

NEW YORK | CONNECTICUT | RMFRIEDLAND.COM | 914.968.8500

100
Clearbrook
ROAD

All information contained herein is based upon information which we consider reliable, but because it has been supplied by third parties, we cannot represent that it is accurate or complete, and it should not be relied upon as such. The offerings are subject to errors, omissions, changes, including price, or withdrawal without notice. The content is provided without warranties of any kind, either express or implied. RM Friedland, LLC, its agents or employees shall not be held liable to anyone for any errors, omissions or inaccuracies under any circumstances. You and your advisors should conduct a careful, independent examination of the property to determine to your satisfaction the suitability of the property for your needs.