

GROUND LEASE OR BUILD-TO-SUITE

5239 SW 20th Ave | Gainesville, FL 32607



**RETAIL
PAD
READY**

FOR MORE INFORMATION:



Eric Ligman
Commercial Realtor®
352.256.2112
ericligman@bosshardtrealty.com

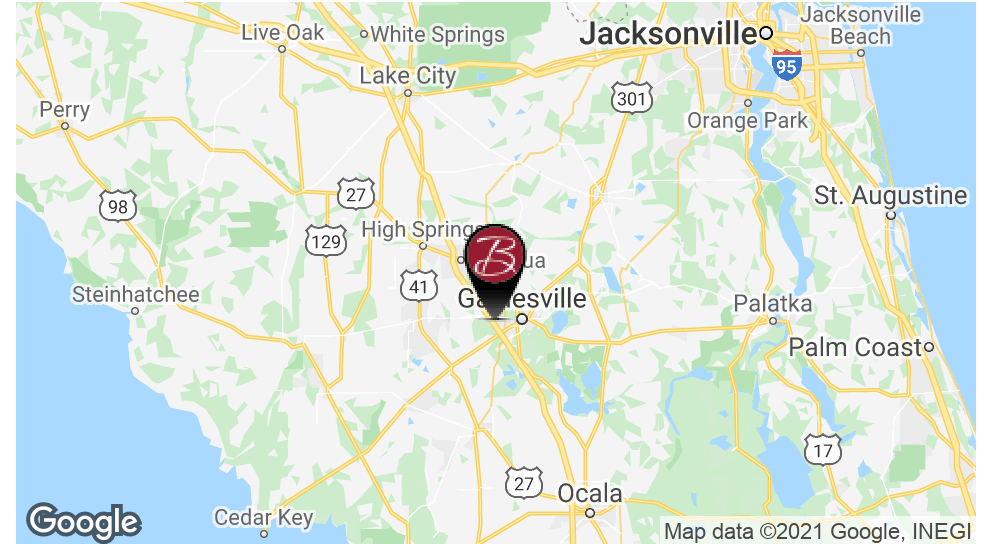


BOSSHARDT
— REALTY SERVICES —
COMMERCIAL & LAND DIVISION

GROUND LEASE OR BUILD-TO-SUITE

EXECUTIVE SUMMARY

5239 SW 20th Ave | Gainesville, FL 32607



OFFERING SUMMARY

Lease Rate:	Negotiable
Lot 1 Size:	0.84 acres
Lot 2 Size:	1.04 acres
Zoning:	MU-1

PROPERTY OVERVIEW

Land Lease or Build to Suite opportunity located with close proximity of University of Florida, North Florida Regional, and Butler Plaza. Site offers great visibility at a high traffic on a traffic light hard corner.

PROPERTY HIGHLIGHTS

- Pad ready development sites with all entailments and utilities in place
- Hard corner traffic light intersection with full access
- Recent approval for S.W 62nd Blvd to be connected to Archer Road. (Page 8)
- Centralized location between Butler Plaza, North Florida Regional, Haile Plantation and University of Florida
- Surround by large scaled garden style apartments.
- Major artery between Newberry Road, Tower Road and the University of Florida.

FOR MORE INFORMATION:



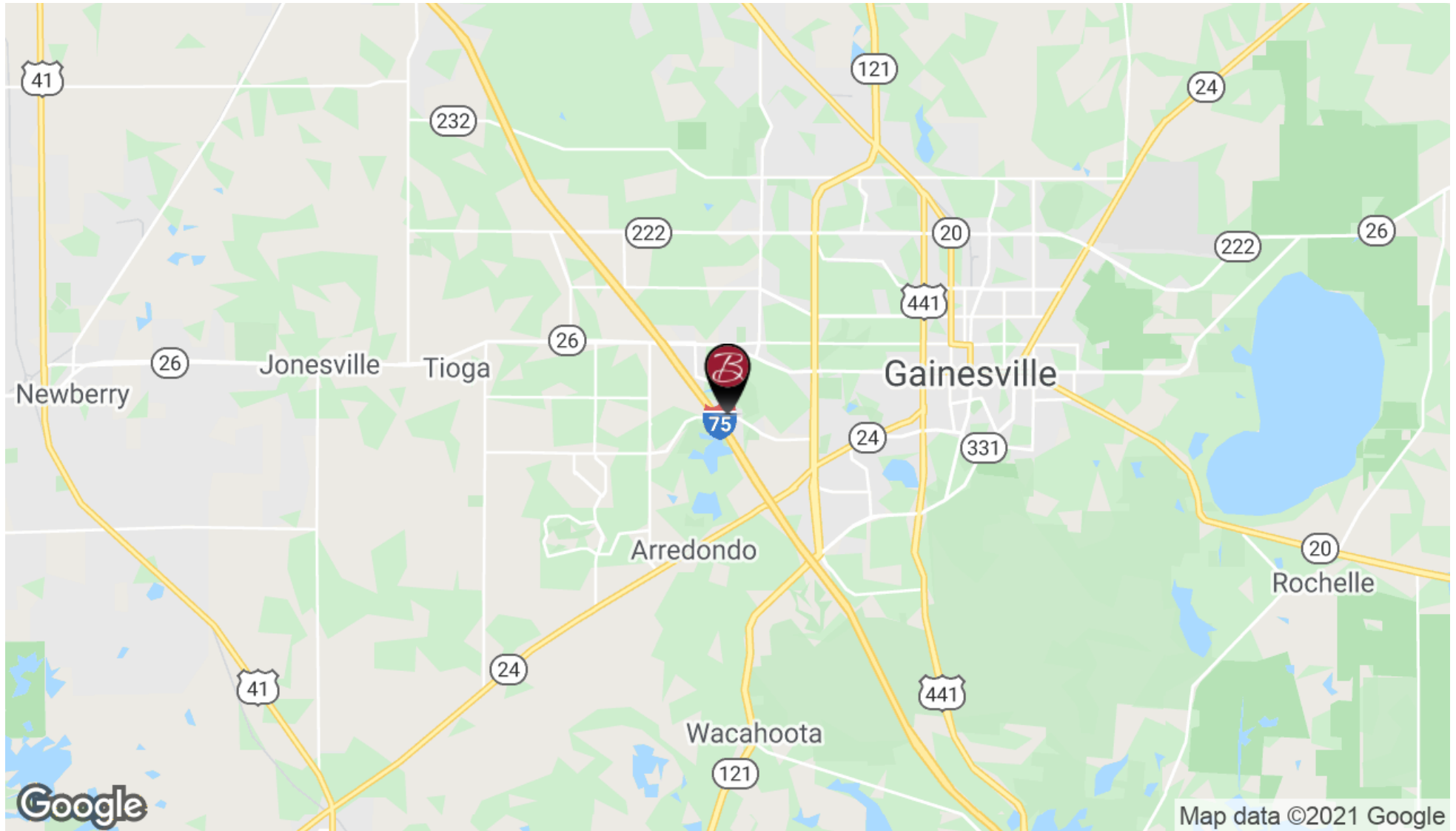
Eric Ligman
Commercial Realtor®
352.256.2112
ericligman@bosshardtrealty.com



GROUND LEASE OR BUILD-TO-SUITE

LOCATION MAP

5239 SW 20th Ave | Gainesville, FL 32607



FOR MORE INFORMATION:



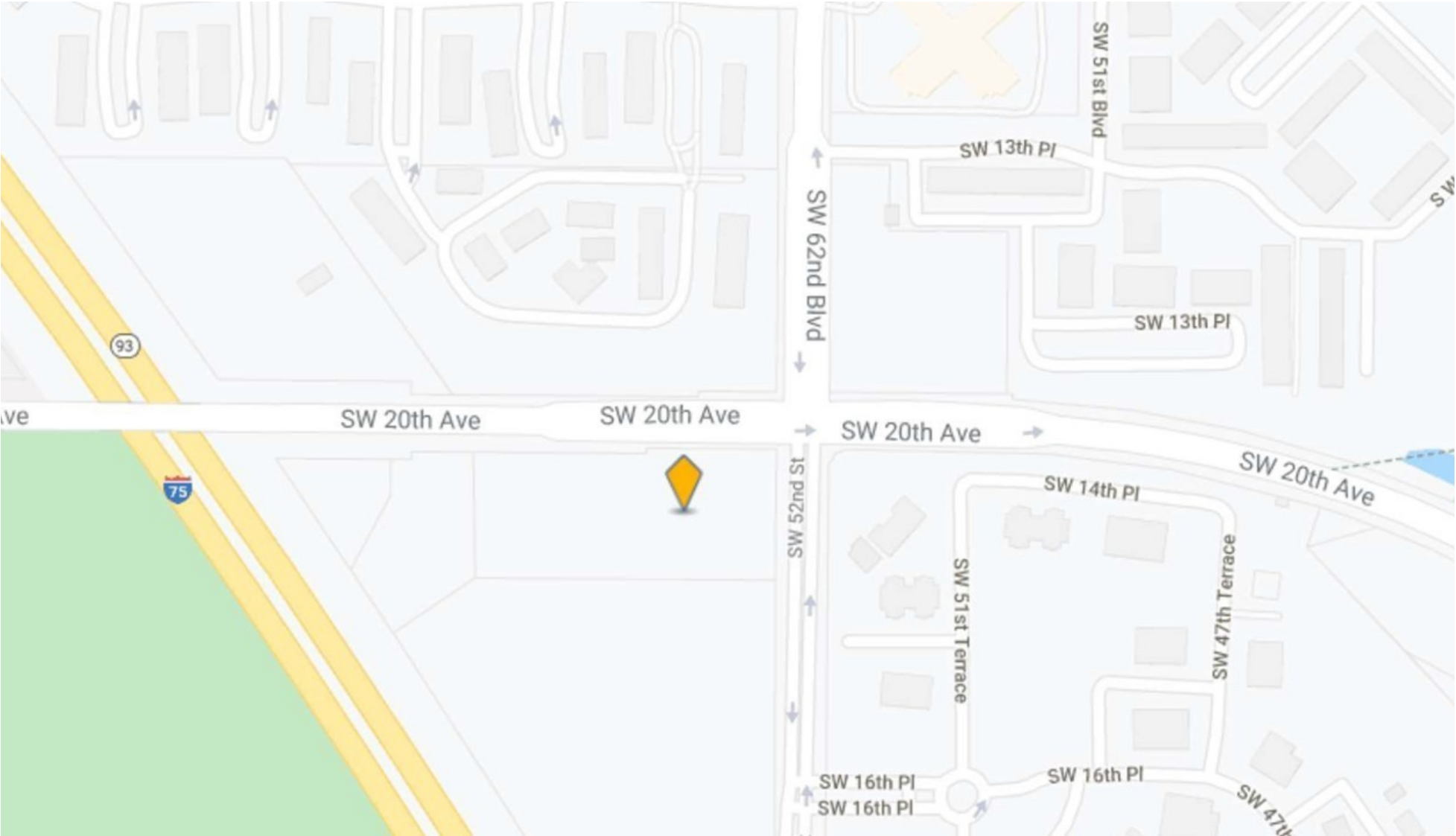
Eric Ligman
Commercial Realtor®
352.256.2112
ericligman@bosshardtrealty.com



BOSSHARDT
— REALTY SERVICES —
COMMERCIAL & LAND DIVISION

GROUND LEASE OR BUILD-TO-SUITE

5239 SW 20th Ave | Gainesville, FL 32607



FOR MORE INFORMATION:



Eric Ligman
Commercial Realtor®
352.256.2112
ericligman@bosshardtrealty.com



GROUND LEASE OR BUILD-TO-SUITE

RETAILER MAP

5239 SW 20th Ave | Gainesville, FL 32607



FOR MORE INFORMATION:



Eric Ligman
Commercial Realtor®
352.256.2112
ericligman@bosshardtrealty.com



BOSSHARDT
— REALTY SERVICES —
COMMERCIAL & LAND DIVISION

GROUND LEASE OR BUILD-TO-SUITE

SITE LAYOUT

5239 SW 20th Ave | Gainesville, FL 32607



FOR MORE INFORMATION:



Eric Ligman
Commercial Realtor®
352.256.2112
ericligman@bosshardtrealty.com

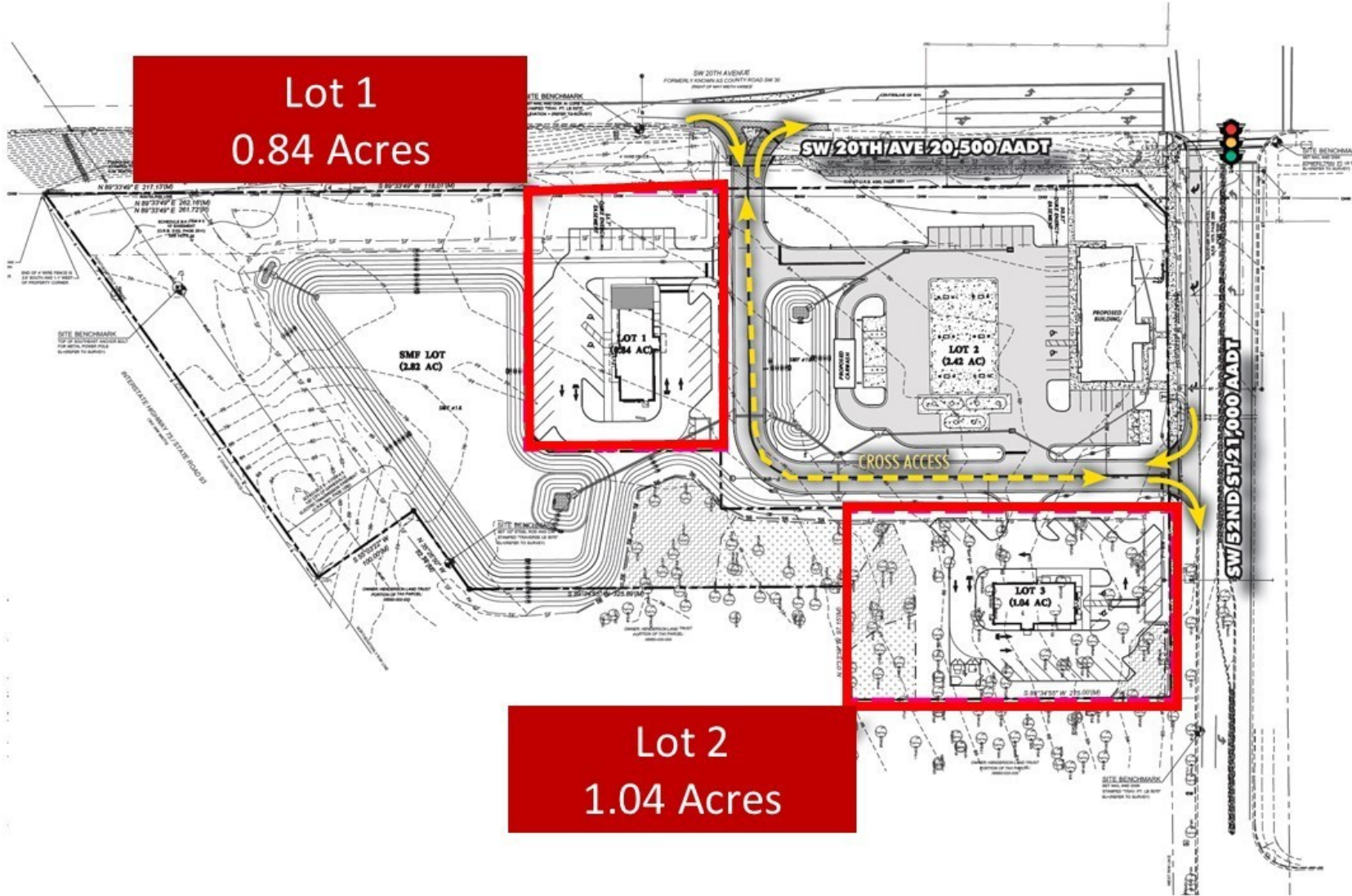


BOSSHARDT
— REALTY SERVICES —
COMMERCIAL & LAND DIVISION

GROUND LEASE OR BUILD-TO-SUITE

ADDITIONAL PHOTOS

5239 SW 20th Ave | Gainesville, FL 32607



FOR MORE INFORMATION:



Eric Ligman
Commercial Realtor®
352.256.2112
ericligman@bosshardtrealty.com



GROUND LEASE OR BUILD-TO-SUITE RETAIL OPPORTUNITY

SW 62ND BLVD EXTENSION

5239 SW 20th Ave | Gainesville, FL 32607



FOR MORE INFORMATION:



Eric Ligman
Commercial Realtor®
352.256.2112
ericligman@bosshardtrealty.com



BOSSHARDT
— REALTY SERVICES —
COMMERCIAL & LAND DIVISION

GROUND LEASE OR BUILD-TO-SUITE

ZONING OVERVIEW

5239 SW 20th Ave | Gainesville, FL 32607



FOR MORE INFORMATION:



Eric Ligman
Commercial Realtor®
352.256.2112
ericligman@bosshardtrealty.com



BOSSHARDT
— REALTY SERVICES —
COMMERCIAL & LAND DIVISION

Section 30-4.18. Density Bonus Points.

Development criteria described in the density bonus points manual, when met, shall allow increases in development intensity based upon the limits in this section. These increases in intensity shall be allowed should a developer propose to undertake a project that will result in a development sensitive to the unique environmental and developmental needs of the area. For each criterion met by the developer, certain points shall be credited to the project. Those points, calculated in accordance with the Density Bonus Points Manual, shall determine the maximum allowable density.

Table V - 6: Permitted Density Using Density Bonus Points

RMF-6		RMF-7		RMF-8	
Points	Max residential density (du/ac)	Points	Max residential density (du/ac)	Points	Max residential density (du/ac)
0	10	0	14	0	20
26	11	20	15	16	21
52	12	39	16	30	22
79	13	59	17	46	23
108	14	79	18	59	24
138+	15	98	19	75	25

DIVISION 4. MIXED-USE AND NONRESIDENTIAL

Section 30-4.19. Permitted Uses.

The following table contains the list of uses allowed, and specifies whether the uses are allowed by right (P), accessory to a principal use (A), or by special use permit approval (S). Blank cells indicate that the use is not allowed. No variances from the requirements of this section shall be allowed.

Table V - 7: Permitted Uses in Mixed-Use and Nonresidential Districts.

	Use Standards	MU-1	MU-2	OR	OF	CP	BUS	BA	BT	BI	W	I-1	I-2
RESIDENTIAL													
Single-family house		P	-	P	P	-	-	-	-	-	P	-	-
Attached dwellings		P	P	P	P	-	-	-	-	-	-	-	-
Multi-family dwellings		P	P	P	P	S	-	-	-	-	P	-	-
Accessory dwelling units	30-5.33	A	A	A	A	-	-	-	-	-	P	-	-
Adult day care homes	30-5.2	P	P	P	P	P	P	-	-	P	-	-	-
Community residential homes (up to 6 residents)	30-5.6	P	P	P	P	-	-	-	-	-	P	-	-
Community residential homes (more than 14 residents)	30-5.6	-	P	P	P	-	-	-	-	-	P	-	-
Community residential homes (7 to 14 residents)	30-5.6	P	P	P	P	-	-	-	-	-	P	-	-

	Use Standards	MU-1	MU-2	OR	OF	CP	BUS	BA	BT	BI	W	I-1	I-2
Dormitory, large	30-5.8	-	-	-	S	-	-	-	-	-	-	-	-
Dormitory, small	30-5.8	S	S	S	P	-	S	-	-	-	-	-	-
Family child care homes	30-5.10	P	-	P	P	-	-	-	-	-	P	-	-
NONRESIDENTIAL													
Alcoholic beverage establishments	30-5.3	S	S	-	-	-	P	-	P	P	-	P	P
Assisted living facility		P	P	-	P	-	-	-	-	-	P	-	-
Armor systems manufacturing and assembly	30-5.16	P	-	-	-	-	-	-	-	-	-	-	-
Bed and breakfast establishments	30-5.4	P	P	S	S	-	P	-	P	-	-	-	-
Business services		P	P	-	P	P	P	P	P	P	P	P	P
Car wash facilities	30-5.5	S	S	-	-	-	P	P	S	P	P	P	P
Civic, social & fraternal organizations		P	P	-	-	-	P	P	P	P	-	-	-
Daycare center	30-5.7	P	P	P	P	P	P	-	-	P	P	-	-
Drive-through facility	30-5.9	P	P	-	-	-	P	P	P	P	P	P	P
Emergency shelters		P	P	P	P	P	P	P	P	P	P	P	P
Equipment sales, rental and leasing, heavy		-	-	-	-	-	-	-	-	-	-	P	P
Equipment sales, rental and leasing, light		-	P	P	P	-	P	P	-	P	P	P	P
Food distribution center for the needy	30-5.12	-	-	-	-	-	S	-	S	S	-	-	-
Food truck	30-5.35	P	P	A	A	P	P	P	P	P	P	P	P
Fuel dealers		S	S	-	-	-	S	P	-	-	-	P	P
Funeral homes and crematories		P	P	P	P	-	P	P	-	-	-	-	-
Gasoline/alternative fuel stations	30-5.13	S	S	-	-	-	P	P	P	S	P	S	S
Go-cart raceway and rentals (indoor and outdoor)		-	-	-	-	-	-	-	-	-	-	S	S
Health services		P	P	P	P	P	-	-	-	-	P	-	-
Hotels and motels		S	S	-	-	S	P	-	P	P	S	-	-
Ice manufacturing/vending machines	30-5.38	-	-	-	-	-	S	S	S	A	A	A	A
Industrial	30-5.14	-	-	-	-	-	-	-	-	-	-	P	P
Job training and vocational rehabilitation services		-	P	-	-	-	P	-	-	P	P	P	-
Junkyard/Salvage Yard	30-5.15	-	-	-	-	-	-	-	-	-	-	S	P

	Use Standards	MU-1	MU-2	OR	OF	CP	BUS	BA	BT	BI	W	I-1	I-2
Laboratories, medical and dental		P	P	P	P	P	P	-	-	P	P	P	P
Large-scale retail		-	P	-	-	-	P	P	P	P	-	-	-
Libraries		-	P	-	-	P	-	-	-	-	P	-	-
Light assembly, fabrication, and processing	30-5.16	P	P	-	S	S	S	P	-	P	P	P	P
Liquor stores		P	P	-	-	-	P	P	P	-	P	-	-
Medical marijuana dispensaries		P	P	A ¹	A ¹	A ²	P	-	-	-	-	-	-
Microbrewery Microwinery Microdistillery ³	30-5.17	S	P	-	-	-	P	-	P	P	P	P	P
Mini-warehouses, self-storage		-	-	-	-	-	-	-	-	P	P	P	P
Museums and art galleries		P	P	P	P	P	P	-	P	P	P	-	-
Offices		P	P	P	P	P	P	P	P	P	P	P	P
Offices, medical and dental		P	P	P	P	P	P	-	P	-	P	-	-
Outdoor storage, principal use	30-5.19	-	-	-	-	-	-	-	-	S	P	P	P
Parking, surface (as a principal use)	30-5.20	-	S	-	-	-	S	P	-	P	P	-	-
Passenger transit or rail stations		S	S	-	-	P	P	P	P	P	P	P	-
Personal services		P	P	P	P	P	P	P	P	P	P	P	P
Places of religious assembly	30-5.21	P	P	P	P	P	P	P	P	P	P	-	-
Public administration buildings		P	P	P	P	P	P	P	P	P	P	P	-
Public maintenance and storage facilities		-	-	-	-	-	-	-	-	P	P	P	P
Public parks		S	S	S	S	P	P	P	P	P	P	P	P
Recreation, indoor		P	P	P	P	P	P	P	P	P	P	P	P
Recreation, outdoor		-	-	-	-	-	S	P	P	S	-	P	P
Recycling centers		-	S	-	-	-	S	-	-	-	S	S	P
Rehabilitation centers	30-5.24	S	S	S	S	-	S		-	S	-	S	
Research, development and testing facilities		-	-	-	-	P	P	-	-	P	P	P	P
Residences for destitute people	30-5.22	S	S	S	S	-	S	-	S	-	-	-	-
Restaurants		P	P	-	S	P	P	P	P	P	P	P	P
Retail nurseries, lawn and garden supply stores		P	P	-	-	-	P	P	-	P	P	P	-
Retail sales (not elsewhere classified)		P	P	-	-	S	P	P	P	P	P	S	S

	Use Standards	MU-1	MU-2	OR	OF	CP	BUS	BA	BT	BI	W	I-1	I-2
Schools, elementary, middle & high (public & private)		P	P	S	S	-	P	-	-	-	P	-	-
Schools, professional		P	P	P	P	P	P	P	-	P	P	P	P
Schools, vocational and trade		-	P	P	P	-	P	P	-	P	P	P	P
Scooter or electric golf cart sales		P	P	-	-	-	P	P	-	P	-	P	-
Sexually-oriented cabarets	30-5.23	-	-	-	-	-	-	-	P	-	-	-	P
Sexually-oriented motion picture theaters	30-5.23	-	-	-	-	-	-	-	P	-	-	-	P
Sexually-oriented retail store	30-5.23	-	-	-	-	-	P	-	P	-	-	-	P
Skilled nursing facility		P	P	-	P	P	P	-	-	-	P	-	-
Social service facility	30-5.25	S	S	S	S	-	-	-	-	-	P	S	S
Solar generation station	30-5.27	-	-	-	-	-	-	-	-	P	-	P	P
Truck or bus terminal/maintenance facilities		-	-	-	-	-	-	P	P	P	P	P	P
Vehicle repair	30-5.28	-	-	-	-	-	-	P	P	P	-	P	P
Vehicle rental		-	-	-	-	-	P	P	P	P	P	P	-
Vehicle sales (no outdoor display)		-	-	-	-	-	P	P	P	P	-	P	-
Vehicle sales (with outdoor display)		-	-	-	-	-	-	P	-	P	-	P	P
Vehicle services	30-5.28	S	S	-	-	-	P	P	P	P	S	P	P
Veterinary services	30-5.29	P	P	P	P	P	P	P	P	P	P	P	P
Warehouse/distribution facilities (<100,000 SF)		-	-	-	-	-	-	-	-	P	P	P	P
Warehouse/distribution facilities (>100,000 SF)		-	-	-	-	-	-	-	-	P	P	P	P
Waste management facilities		-	-	-	-	-	-	-	-	S	-	P	P
Wholesale trade		-	-	-	-	-	-	S	-	P	P	P	P
Wireless communication facilities	30-5.30												

1 **LEGEND:**

2 P = Permitted by right; S = Special Use Permit; A = Accessory; Blank = Use not allowed.

3 1 = Only when accessory to and in the same building as health services or offices of physicians, dentists,
4 and other health practitioners.

5 2 = Accessory to and in the same building as health services and comprising less than 25% of the gross
6 floor area of the building.

7 3 = Prohibited where adjacent to single-family zoned property.

Section 30-4.20. Dimensional Standards.

The following tables contain the dimensional standards for the various uses allowed in each district.

Table V - 8: Mixed-Use and Nonresidential Districts Dimensional Standards.

	MU-1	MU-2	OR	OF	CP	BUS	BA	BT	W	BI	I-1	I-2
DENSITY/INTENSITY												
Residential density (units/acre)												
Min ¹	8	12	None	None	10	None	None	None	8	None	None	None
Max	30	30	20	20	30	None	None	None	30	None	None	None
Nonresidential building coverage	60%	75%	40%	50%	50%	None	None	None	None	None	None	None
Nonresidential GLA (max)	100,000 ²	None ²	None	None	None	None	None	None	None	None	None	None
LOT STANDARDS												
Min lot area (sq. ft.)	None	None	6,000	6,000	None	None	None	6,000	None	None	None	None
Min lot width (ft.)	None	None	60	60	None	None	None	60	None	None	None	None
Min lot depth (ft.)	None	None	90	90	None	None	None	90	None	None	None	None
SETBACKS (ft.)												
Front	10 min 100 max	10 min 100 max	10 min 100 max	10 min 100 max	10 min 100 max	10 min 100 max	15 min	10 min 100 max	25 min	25 min	25 min	25 min
Side-street (min)	15	15	10	10	10	10	15	10	25	20	25	25
Side-interior (min)	10	10	10	10	10	10	10	10	10 ⁴	10	10 ⁴	20 ⁴
Rear (min)	10	10	10	10	10	10	15	10	10 ⁴	20	10 ⁴	10 ⁴
MAXIMUM BUILDING HEIGHT (stories)												
By right	5	5	3	3	5	5	5	5	5	5	5	5
With building height bonus	8	8	-	-	8	8	-	8	-	-	-	-

LEGEND:

1 = Lots that existed on November 13, 1991, as recorded in the city and that are less than or equal to 0.5 acres in size are exempt from minimum density requirements.

2 = Developments of 50,000 sq. ft. or more of gross leasable area shall be located along arterials or collectors, as defined in the official roadway map.

3 = Where the yard abuts and is used for access to a railroad siding, the minimum setback shall be zero feet.

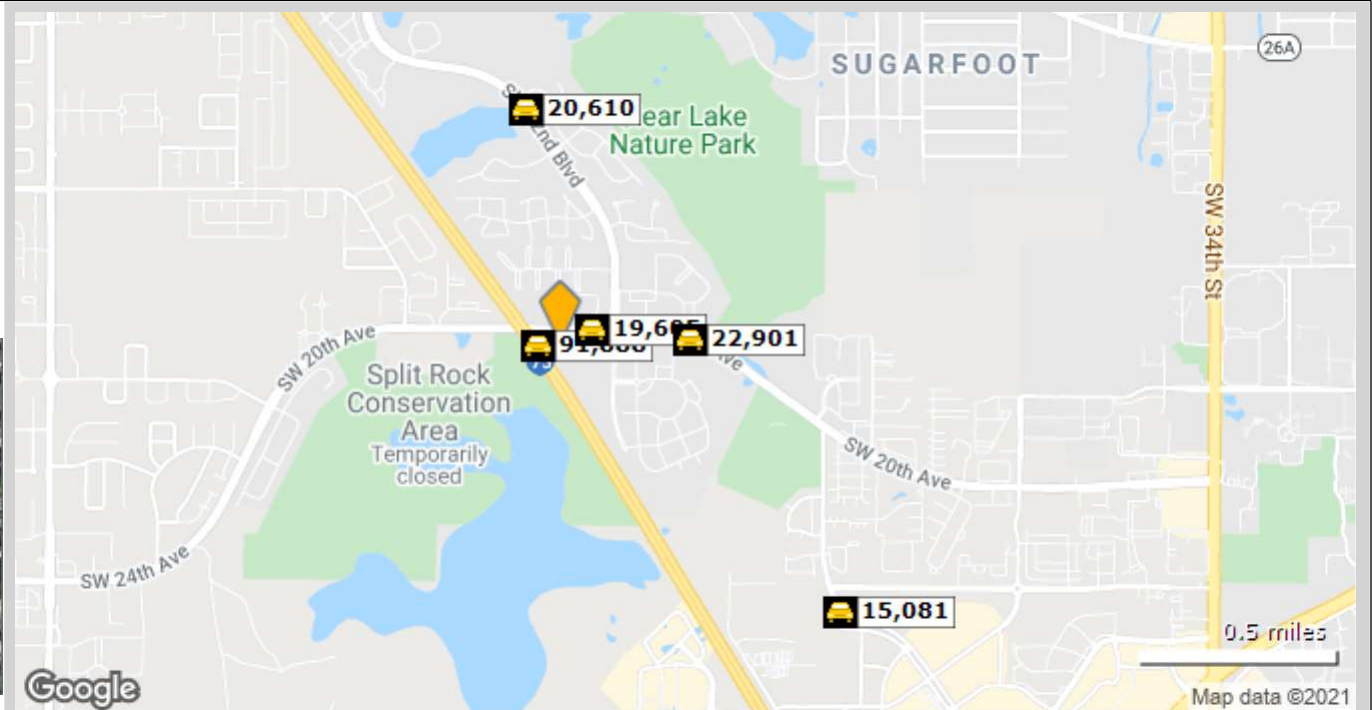
4 = Where the rear or side yard abuts U1 or single-family residential zoning or a historic district, Section 30-4.8 development compatibility standards shall apply.

Traffic Count Report

Legacy Fountains

5201 SW 52nd St, Gainesville, FL 32608

Building Type: **Land**
 Class: -
 RBA: -
 Typical Floor: -
 Total Available: **0 SF**
 % Leased: **0%**
 Rent/SF/Yr: -



	Street	Cross Street	Cross Str Dist	Count Year	Avg Daily Volume	Volume Type	Miles from Subject Prop
1	SW 20th Ave	I- 75	0.06 NW	2020	91,888	MPSI	.05
2	Southwest 20th Avenue	SW 62nd St	0.06 E	2020	19,605	MPSI	.10
3	SW 20th Ave	SW 62nd St	0.20 W	2018	22,901	MPSI	.34
4	Southwest 62nd Street	SW 4th Pl	0.01 SE	2020	20,610	MPSI	.62
5	SW 43rd St	SW 24th Ave	0.07 NW	2018	12,527	MPSI	1.00
6	Clark Butler Boulevard	SW 24th Ave	0.07 NW	2020	15,081	MPSI	1.00



Traffic Count Report

5201 SW 52nd St, Gainesville, FL 32608

Building Type: **Land**
 Class: -
 RBA: -
 Typical Floor: -
 Total Available: **0 SF**
 % Leased: **0%**
 Rent/SF/Yr: -



	Street	Cross Street	Cross Str Dist	Count Year	Avg Daily Volume	Volume Type	Miles from Subject Prop
1	Southwest 20th Avenue	SW 62nd St	0.06 E	2020	19,605	MPSI	.04
2	SW 20th Ave	I- 75	0.06 NW	2020	91,888	MPSI	.15
3	SW 20th Ave	SW 62nd St	0.20 W	2018	22,901	MPSI	.24
4	Southwest 62nd Street	SW 4th Pl	0.01 SE	2020	20,610	MPSI	.63
5	SW 43rd St	SW 24th Ave	0.07 NW	2018	12,527	MPSI	.94
6	Clark Butler Boulevard	SW 24th Ave	0.07 NW	2020	15,081	MPSI	.94



Traffic Count Report

Lot 1

SW SW 20th Ave & SW 52nd St, Gainesville, FL 32607

Building Type: **General Retail**
 Secondary: **Freestanding**
 GLA: **36,590 SF**
 Year Built: **2022**
 Total Available: **36,590 SF**
 % Leased: **0%**
 Rent/SF/Yr: **Negotiable**



	Street	Cross Street	Cross Str Dist	Count Year	Avg Daily Volume	Volume Type	Miles from Subject Prop
1	SW 20th Ave	I- 75	0.06 NW	2020	91,888	MPSI	.07
2	Southwest 20th Avenue	SW 62nd St	0.06 E	2020	19,605	MPSI	.08
3	SW 20th Ave	SW 62nd St	0.20 W	2018	22,901	MPSI	.33
4	Southwest 62nd Street	SW 4th Pl	0.01 SE	2020	20,610	MPSI	.61
5	SW 43rd St	SW 24th Ave	0.07 NW	2018	12,527	MPSI	.99
6	Clark Butler Boulevard	SW 24th Ave	0.07 NW	2020	15,081	MPSI	.99

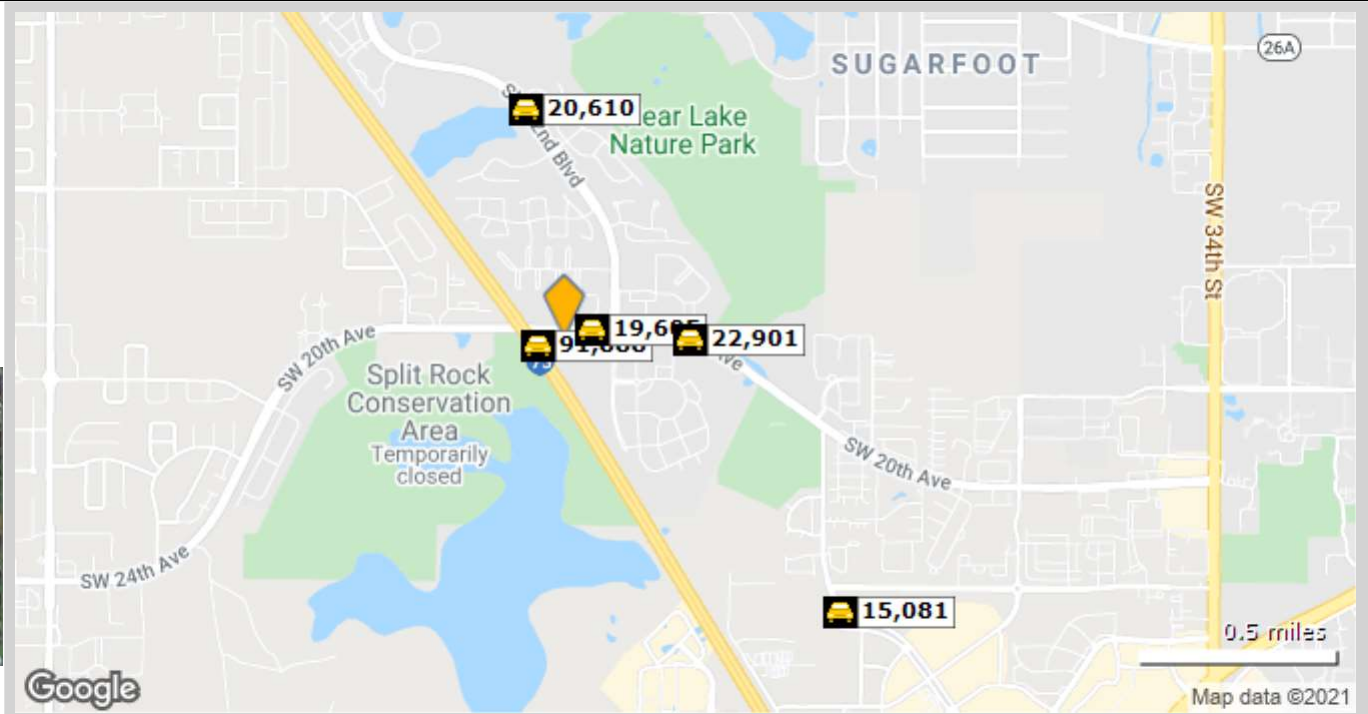


Traffic Count Report

Lot 1

SW 20th Ave & SW 52nd St, Gainesville, FL 32607

Building Type: **Land**
 Class: -
 RBA: -
 Typical Floor: -
 Total Available: **36,590 SF**
 % Leased: **0%**
 Rent/SF/Yr: -



	Street	Cross Street	Cross Str Dist	Count Year	Avg Daily Volume	Volume Type	Miles from Subject Prop
1	SW 20th Ave	I-75	0.06 NW	2020	91,888	MPSI	.06
2	Southwest 20th Avenue	SW 62nd St	0.06 E	2020	19,605	MPSI	.09
3	SW 20th Ave	SW 62nd St	0.20 W	2018	22,901	MPSI	.33
4	Southwest 62nd Street	SW 4th Pl	0.01 SE	2020	20,610	MPSI	.61
5	SW 43rd St	SW 24th Ave	0.07 NW	2018	12,527	MPSI	1.00
6	Clark Butler Boulevard	SW 24th Ave	0.07 NW	2020	15,081	MPSI	1.00



GROUND LEASE OR BUILD-TO-SUITE

DEMOGRAPHICS MAP & REPORT

5239 SW 20th Ave | Gainesville, FL 32607

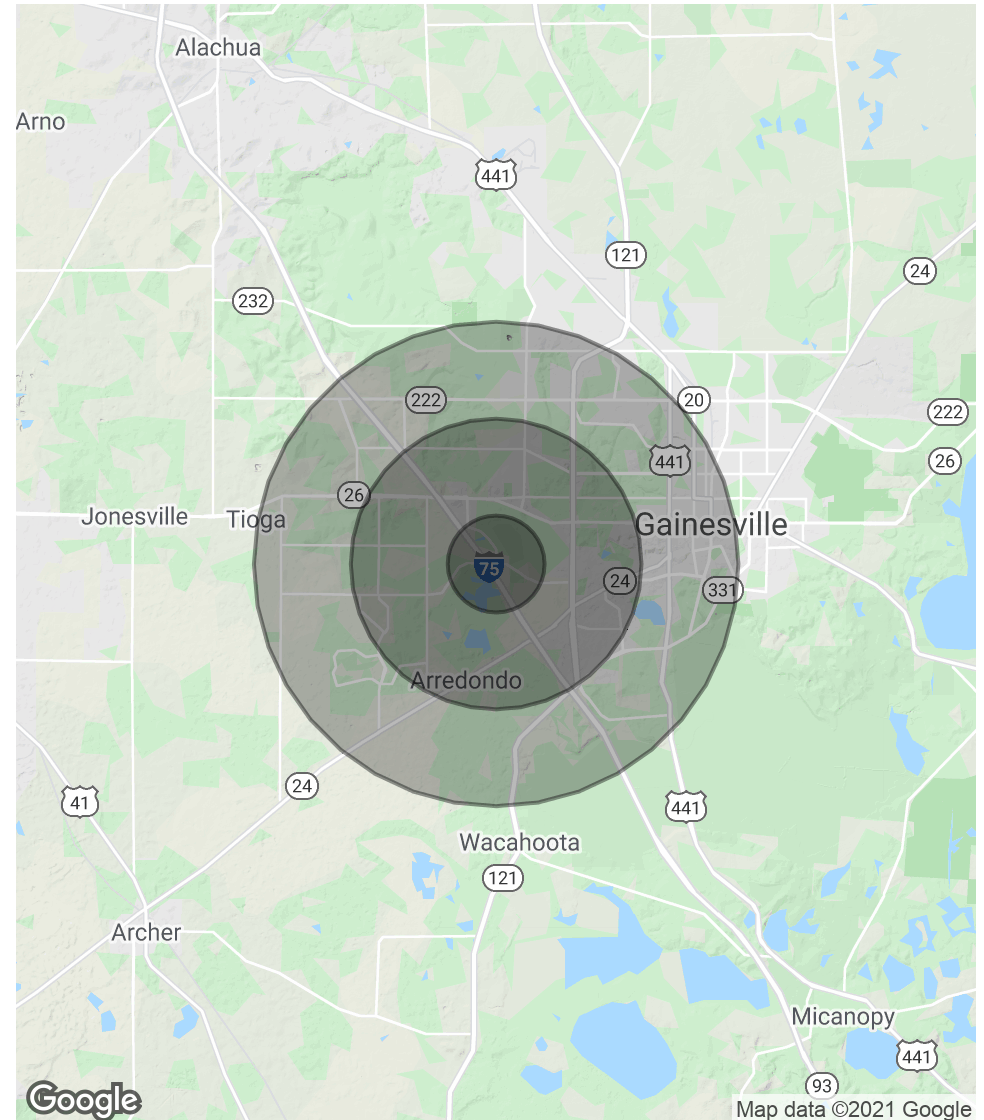
POPULATION

	1 MILE	3 MILES	5 MILES
Total Population	7,920	65,811	146,977
Average Age	25.0	28.8	30.2
Average Age (Male)	25.5	28.6	29.5
Average Age (Female)	25.3	29.5	30.8

HOUSEHOLDS & INCOME

	1 MILE	3 MILES	5 MILES
Total Households	3,816	28,932	59,706
# of Persons per HH	2.1	2.3	2.5
Average HH Income	\$34,253	\$47,762	\$56,074
Average House Value	\$148,189	\$219,936	\$238,666

* Demographic data derived from 2010 US Census



FOR MORE INFORMATION:



Eric Ligman
Commercial Realtor®
352.256.2112
ericligman@bosshardtrealty.com



GROUND LEASE OR BUILD-TO-SUITE

5239 SW 20th Ave | Gainesville, FL 32607



ERIC LIGMAN

Commercial Realtor®

ericligman@bosshardtrealty.com

Direct: 352.256.2112 | **Cell:** 352.256.2112

PROFESSIONAL BACKGROUND

As a seasoned real estate professional, Eric Ligman is known for his extensive knowledge of North Florida's real estate market and his unmatched devotion to client needs. Eric's success is based on the trust and respect earned from his clients by his tireless work ethic, innovative ideas, and candid advice. Over the last two decades, Eric has greatly influenced the transformation of North Florida's landscape brokering deals with national and regional companies including Pennsylvania Real Estate Trust (PRET), Budweiser, Campus USA Credit Union, TD Bank, Encell Technologies, RaceTrac, and Sunstate Credit Union. Ligman is also credited with orchestrating one of the most significant local land deals in recent history, proving himself as the area's premier commercial broker with over 45 million dollars of sold transactions in 2019. Aside from his comprehensive knowledge of the commercial real estate market, Ligman also possesses a clear understanding of tenant needs and has worked diligently to develop an extensive network of landlord relationships. These attributes are instrumental in effectively servicing his valued clients' real estate needs in an efficient and timely manner. Eric has extensive experience in all areas of the commercial real estate sector, including tenant representation, lease negotiations, investment properties, land value, and corporate real estate ventures.

MEMBERSHIPS

ICSC
LoopNet
CoStar
Gainesville Chamber Commerce
GACAR- Gainesville Alachua County Association of Realtors

Bosshardt Realty Services

5542 NW 43rd Street
Gainesville, FL 32653
352.371.6100

FOR MORE INFORMATION:



Eric Ligman

Commercial Realtor®

352.256.2112

ericligman@bosshardtrealty.com



BOSSHARDT
— REALTY SERVICES —

COMMERCIAL & LAND DIVISION