

FOR SALE - Lots 2, 3, 4, 5, 6 & 7



CAPITAL CIRCLE NW & OLD BAINBRIDGE RD

Jim Brockett

850-386-6160 o
850-459-4585 m

Jimbrockett@gmail.com email

Cindy Cooper

850-386-6160 o
850-545-8076 m

cindy@TLHRealtors.com email



Address: Capital Circle NW & Bainbridge Rd
Tallahassee, FL 32303

Price: \$890,000

Total Acres: 2.58 Acres +/-

Current Use: Vacant parcels

Zoned: C-2 General Commercial (see below)

Traffic Count: 12,500 Capital Circle NW
3,300 Bainbridge Rd

Parcel ID: #2431160000020
#2431160000030
#2431160000040
#2431160000050
#2431160000060
#2431160000070

FEATURES

- 6 contiguous parcels (lots 2, 3, 4, 5, 6 and 7)
- Approx. 275' of frontage on Capital Circle NW
- Approx. 530' on Old Bainbridge Rd
- Per the County, C-2 Zoning vested under the old comp plan. We are in the process of getting a Zoning letter from the county.
 - ❖ Call Jim Brockett with any questions
- Possible uses – Industrial, Office, Retail, Self Storage
- **Option to purchase lots 2,3,4 & 5 for \$720,000**
- **Option to purchase lots 6 & 7 for \$170,000**

LOCATION

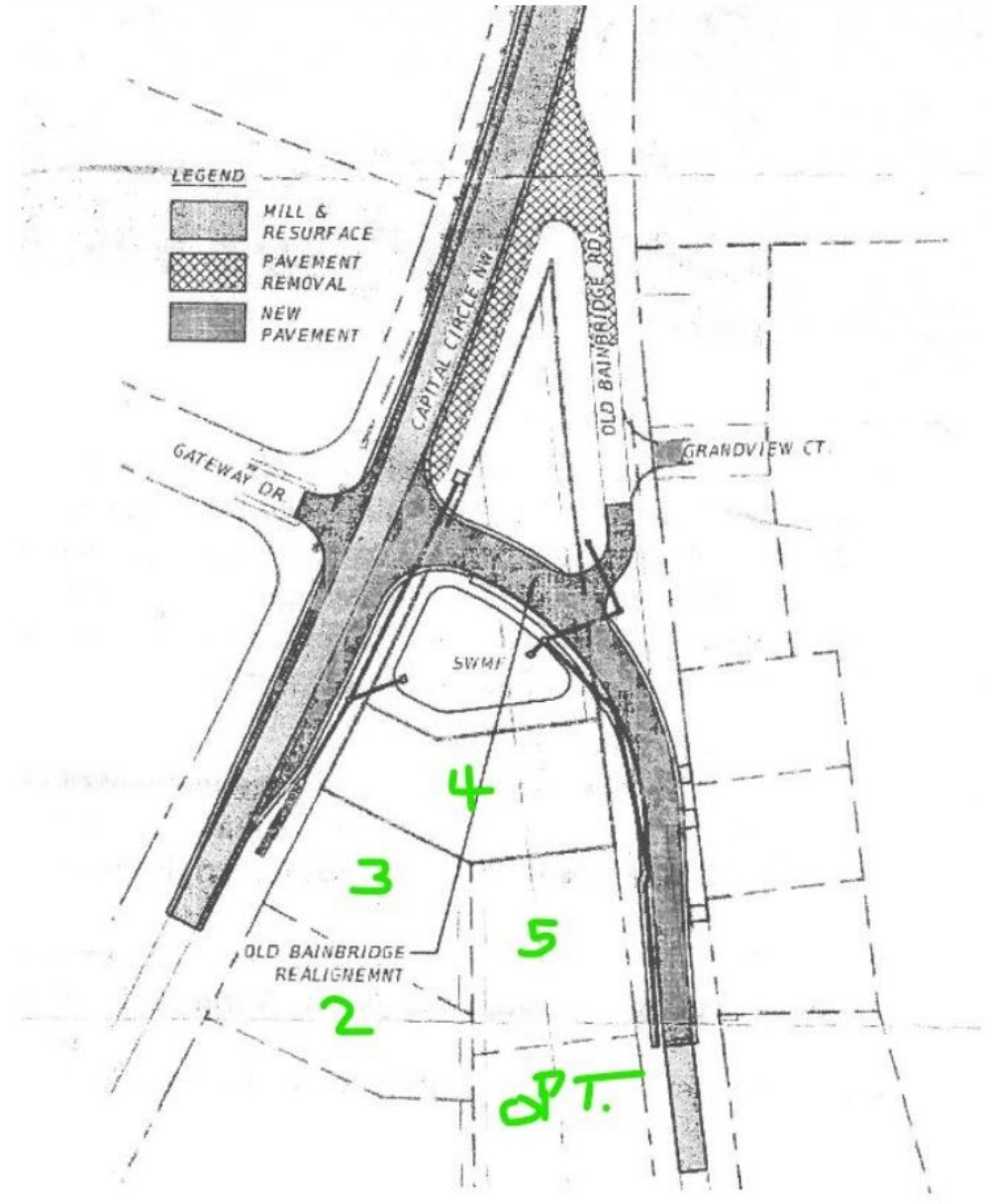
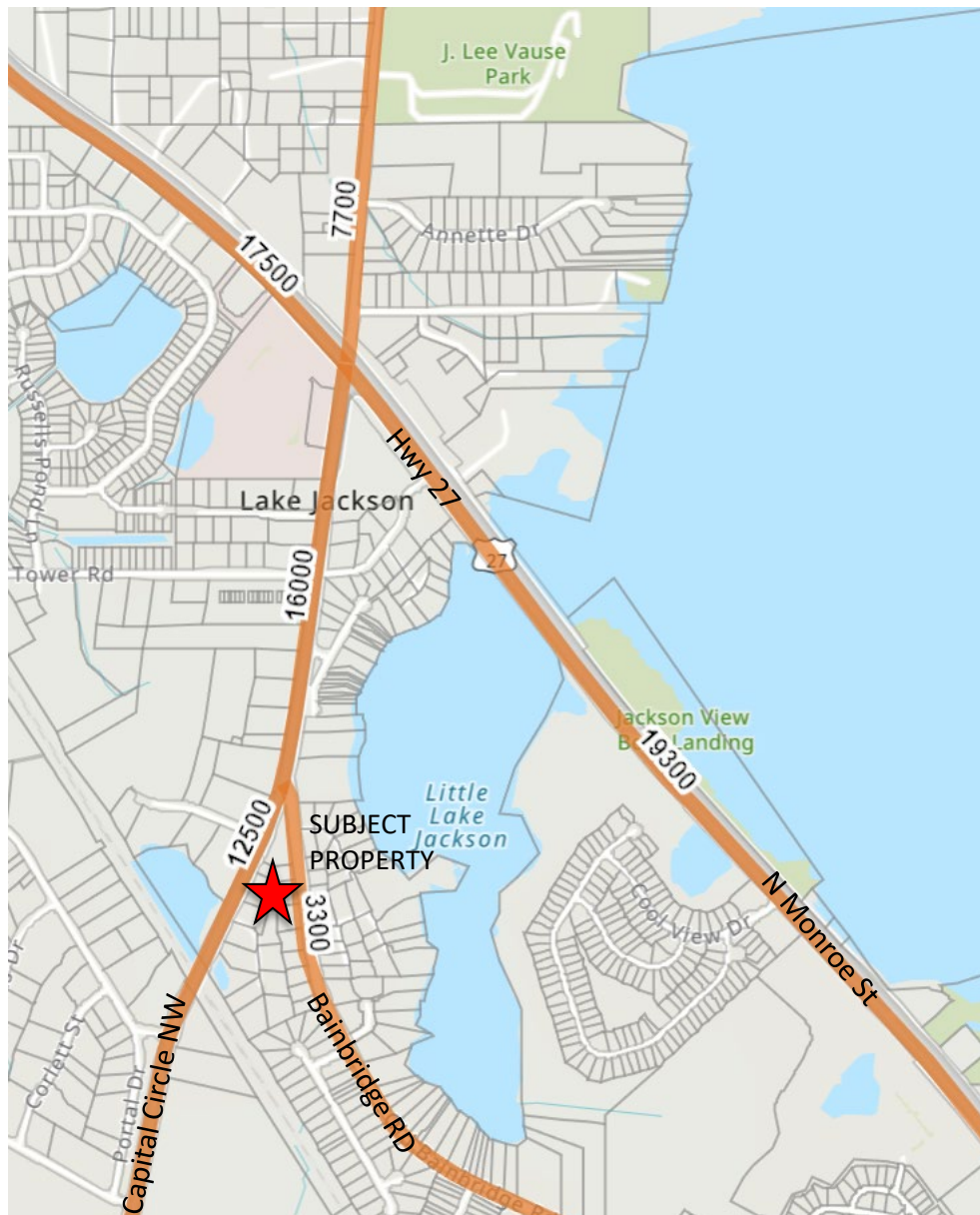
- Leon County, NW Tallahassee
- Excellent visibility
- Access property from Old Bainbridge & CCNW

The information shown or contained herein is believed to be accurate but is not warranted or guaranteed, is subject to errors, omissions and changes without notice and should be verified independently.

© 2022 Coldwell Banker Real Estate LLC, dba Coldwell Banker Commercial Affiliates. All Rights Reserved. Coldwell Banker Real Estate LLC, dba Coldwell Banker Commercial Affiliates fully supports the principles of the Equal Opportunity Act. Each Office is Independently Owned and Operated. Coldwell Banker Commercial and the Coldwell Banker Commercial Logo are registered service marks owned by Coldwell Banker Real Estate LLC, dba Coldwell Banker Commercial Affiliates.

Coldwell Banker Commercial
HARTUNG
3303 Thomasville Rd, Suite #201
Tallahassee, FL 32308
850.386.6160

TRAFFIC COUNTS / REALIGNMENT MAP

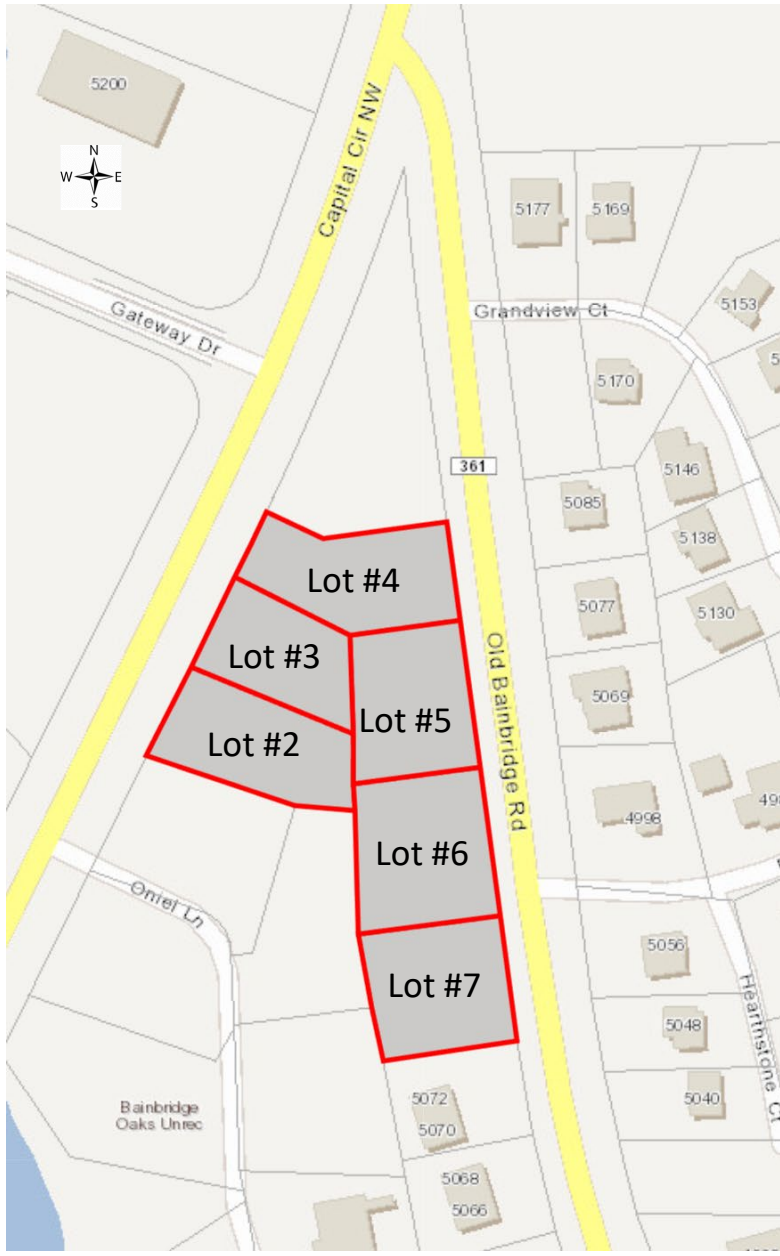


The information shown or contained herein is believed to be accurate but is not warranted or guaranteed, is subject to errors, omissions and changes without notice and should be verified independently.

© 2022 Coldwell Banker Real Estate LLC, dba Coldwell Banker Commercial Affiliates. All Rights Reserved. Coldwell Banker Real Estate LLC, dba Coldwell Banker Commercial Affiliates fully supports the principles of the Equal Opportunity Act. Each Office is Independently Owned and Operated. Coldwell Banker Commercial and the Coldwell Banker Commercial Logo are registered service marks owned by Coldwell Banker Real Estate LLC, dba Coldwell Banker Commercial Affiliates.

**Coldwell Banker Commercial
HARTUNG**
3303 Thomasville Rd, Suite #201
Tallahassee, FL 32308
850.386.6160

GIS MAPS



The information shown or contained herein is believed to be accurate but is not warranted or guaranteed, is subject to errors, omissions and changes without notice and should be verified independently.

© 2022 Coldwell Banker Real Estate LLC, dba Coldwell Banker Commercial Affiliates. All Rights Reserved. Coldwell Banker Real Estate LLC, dba Coldwell Banker Commercial Affiliates fully supports the principles of the Equal Opportunity Act. Each Office is Independently Owned and Operated. Coldwell Banker Commercial and the Coldwell Banker Commercial Logo are registered service marks owned by Coldwell Banker Real Estate LLC, dba Coldwell Banker Commercial Affiliates.

Coldwell Banker Commercial
HARTUNG
3303 Thomasville Rd, Suite #201
Tallahassee, FL 32308
850.386.6160

PERMITTED USES



**COLDWELL BANKER
COMMERCIAL
HARTUNG**

Section 10-6.647. C-2 General Commercial district.

1. District Intent	PERMITTED USES	
	2. Principal Uses	3. Accessory Uses
<p>The C-2 district is intended to be located in areas designated Bradfordville Mixed Use, Suburban or Woodville Rural Community on the Future Land Use Map of the Comprehensive Plan shall apply to areas with direct access to major collector or arterial roadways located within convenient traveling distance to several neighborhoods, wherein small groups of retail commercial, professional, office, community and recreational facilities and other convenience commercial activities are permitted in order to provide goods and services that people frequently use in close proximity to their homes. The C-2 district is not intended to accommodate large scale commercial or service activities or other types of more intensive commercial activity. The maximum gross density allowed for new residential development in the C-2 district is 16 dwelling units per acre, with a minimum gross density of 8 dwelling units per acre, unless constraints of concurrency or preservation and/or conservation features preclude the attainment of the minimum density. The residential uses are required to be located on the second floor or above a building containing commercial or office uses on the first floor. Mixed use projects in the C-2 district are encouraged, but are not required. In order to maintain compact and non-linear characteristics, C-2 districts shall not be located closer than ¼ mile to other C-2 or C-1 districts or to parcels of land containing commercial developments including more than 20,000 gross square feet of floor area and shall not exceed 30 acres in size.</p>	<p>(1) Antique shops. (2) Automotive service and repair, including car wash. (3) Bait and tackle shops. (4) Banks and other financial institutions. (5) Camera and photographic stores. (6) Cocktail lounges and bars. (7) Community facilities related to the permitted principal uses, including libraries, religious facilities, police/fire stations, and high schools. Elementary schools are prohibited. Other community facilities may be allowed in accordance with Section 10-6.806 of these regulations. (8) Day care centers. (9) Gift, novelty, and souvenir shops. (10) Indoor amusements (bowling, billiards, skating, etc.). (11) Indoor theaters (including amphitheaters). (12) Laundromats, laundry and dry cleaning pick-up stations. (13) Mailing services. (14) Medical and dental offices, services, laboratories, and clinics. (15) Motor vehicle fuel sales. (16) Non-medical offices and services, including business and government offices and services. (17) Non-store retailers. (18) Passive and active recreational facilities. (19) Personal services (barber shops, fitness clubs etc.). (20) Photocopying and duplicating services. (21) Rental and sales of dvds, video tapes and games. (22) Rental of tools, small equipment, or party supplies. (23) Repair services, non-automotive.</p>	<p>(24) Residential (any type), provided that it is located on the second floor or above a building containing commercial or office uses on the first floor. (25) Restaurants, with or without drive-in facilities. (26) Retail bakeries. (27) Retail computer, video, record, and other electronics. (28) Retail department, apparel, and accessory stores. (29) Retail drug store. (30) Retail florist. (31) Retail food and grocery. (32) Retail furniture, home appliances, accessories. (33) Retail home/garden supply, hardware and nurseries. (34) Retail jewelry store. (35) Retail needlework shops and instruction. (36) Retail newsstand, books, greeting cards. (37) Retail office supplies. (38) Retail optical and medical supplies. (39) Retail package liquors. (40) Retail pet stores. (41) Retail picture framing. (42) Retail sporting goods, toys. (43) Retail trophy store. (44) Shoes, luggage, and leather goods. (45) Social, fraternal and recreational clubs and lodges, including assembly halls. (46) Studios for photography, music, art, dance, and voice. (47) Tailoring. (48) Veterinary services, including veterinary hospitals. (49) Other uses, which in the opinion of the County Administrator or designee, are of a similar and compatible nature to those uses described in this district.</p>
FOR DEVELOPMENT STANDARDS REFER TO PAGE 2 OF 2		

The information shown or contained herein is believed to be accurate but is not warranted or guaranteed, is subject to errors, omissions and changes without notice and should be verified independently.

© 2022 Coldwell Banker Real Estate LLC, dba Coldwell Banker Commercial Affiliates. All Rights Reserved. Coldwell Banker Real Estate LLC, dba Coldwell Banker Commercial Affiliates fully supports the principles of the Equal Opportunity Act. Each Office is Independently Owned and Operated. Coldwell Banker Commercial and the Coldwell Banker Commercial Logo are registered service marks owned by Coldwell Banker Real Estate LLC, dba Coldwell Banker Commercial Affiliates.

**Coldwell Banker Commercial
HARTUNG**
 3303 Thomasville Rd, Suite #201
 Tallahassee, FL 32308
 850.386.6160

DEVELOPMENT STANDARDS

DEVELOPMENT STANDARDS									
Use Category	4. Minimum Lot or Site Size			5. Minimum Building Setbacks				6. Maximum Building Restrictions	
	a. Lot or Site Area	b. Lot Width	c. Lot Depth	a. Front	b. Side-Interior Lot	c. Side-Corner Lot	d. Rear	a. Building Size (excluding gross building floor area used for parking)	b. Building Height (excluding stories used for parking)
Any Permitted Principal Use	none	none	none	25 feet	15 feet on each side	25 feet	10 feet	Except for properties within the Woodville Rural Community, 12,500 square feet of non-residential gross building floor area per acre and commercial and/or office uses not to exceed 200,000 square feet of gross building floor area for each district containing 20 acres or less. 12,500 square feet of non-residential gross building floor area per acre and commercial and/or office uses not to exceed a maximum of 250,000 square feet of non-residential gross building area per district for districts containing more than 20 acres to 30 acres. Individual buildings may not exceed 50,000 gross square feet. Within the Woodville Rural Community, 12,500 square feet of non-residential gross building area per acre and commercial uses not to exceed 50,000 square feet of gross building floor area per parcel.	3 stories
7. Street Vehicular Access Restrictions: Properties in the C-2 zoning district shall be located on a major collector or arterial street, but may have additional vehicular access to any type of street. However, in order to protect residential areas and neighborhoods from non-residential traffic, vehicular access to a local street is prohibited if one of the following zoning districts is located on the other side of the local street: RA, R-1, R-2, R-3, R-4, R-5, MH, , and RP.									

GENERAL NOTES:

1. If central sanitary sewer is not available, residential development is limited to a minimum of 0.50 acre lots and inside the Urban Services Area non-residential development is limited to a maximum of 2,500 square feet of building area. Inside the Urban Services Area, community service facilities are limited to a maximum of 5,000 square feet of building area or a 500-gallon septic tank. Also, refer to Sanitary Sewer Policy 2.1.12 of the Comprehensive Plan for additional requirements.
2. Refer to the Environmental Management Act (EMA) for information pertaining to the regulation of environmental features (preservation/conservation features), stormwater management requirements, etc.
3. Refer to the Concurrence Management Ordinance for information pertaining to the availability of capacity for certain public facilities (roads, parks, etc.).

The information shown or contained herein is believed to be accurate but is not warranted or guaranteed, is subject to errors, omissions and changes without notice and should be verified independently.

LOCATION MAP



**COLDWELL BANKER
COMMERCIAL**
HARTUNG



The information shown or contained herein is believed to be accurate but is not warranted or guaranteed, is subject to errors, omissions and changes without notice and should be verified independently.

© 2022 Coldwell Banker Real Estate LLC, dba Coldwell Banker Commercial Affiliates. All Rights Reserved. Coldwell Banker Real Estate LLC, dba Coldwell Banker Commercial Affiliates fully supports the principles of the Equal Opportunity Act. Each Office is Independently Owned and Operated. Coldwell Banker Commercial and the Coldwell Banker Commercial Logo are registered service marks owned by Coldwell Banker Real Estate LLC, dba Coldwell Banker Commercial Affiliates.

**Coldwell Banker Commercial
HARTUNG**

3303 Thomasville Rd, Suite #201
Tallahassee, FL 32308
850.386.6160

RETAILER MAP



The information shown or contained herein is believed to be accurate but is not warranted or guaranteed, is subject to errors, omissions and changes without notice and should be verified independently.

© 2022 Coldwell Banker Real Estate LLC, dba Coldwell Banker Commercial Affiliates. All Rights Reserved. Coldwell Banker Real Estate LLC, dba Coldwell Banker Commercial Affiliates fully supports the principles of the Equal Opportunity Act. Each Office is Independently Owned and Operated. Coldwell Banker Commercial and the Coldwell Banker Commercial Logo are registered service marks owned by Coldwell Banker Real Estate LLC, dba Coldwell Banker Commercial Affiliates.

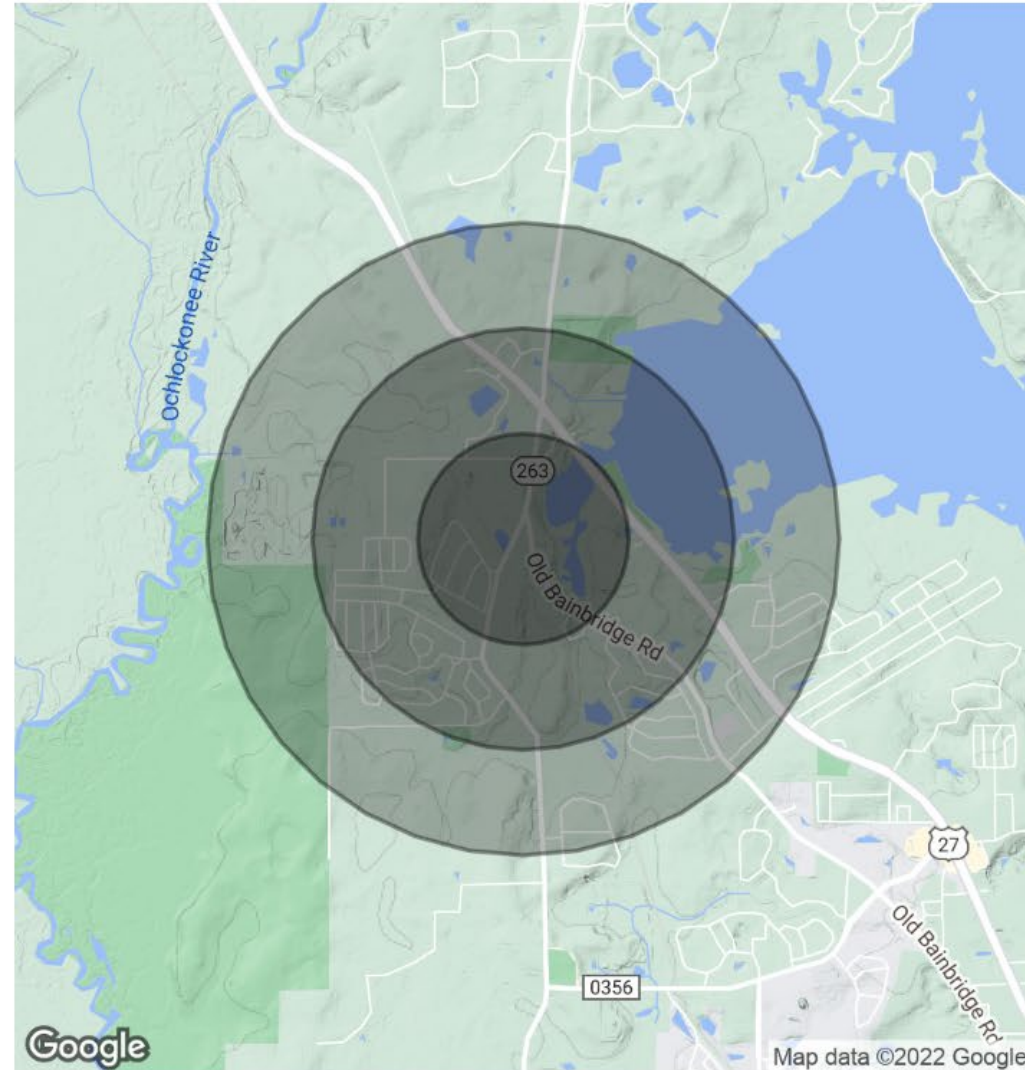
Coldwell Banker Commercial
HARTUNG
3303 Thomasville Rd, Suite #201
Tallahassee, FL 32308
850.386.6160

DEMOGRAPHICS

POPULATION	0.5 MILES	1 MILE	1.5 MILES
Total Population	1,683	4,718	4,968
Average Age	35.7	35.4	34.5
Average Age (Male)	31.7	32.6	35.1
Average Age (Female)	38.2	37.4	35.5

HOUSEHOLDS & INCOME	0.5 MILES	1 MILE	1.5 MILES
Total Households	647	1,818	1,876
# of Persons per HH	2.6	2.6	2.6
Average HH Income	\$69,629	\$70,133	\$71,839
Average House Value	\$561,014	\$296,762	\$303,353

* Demographic data derived from 2020 ACS - US Census



The information shown or contained herein is believed to be accurate but is not warranted or guaranteed, is subject to errors, omissions and changes without notice and should be verified independently.

© 2022 Coldwell Banker Real Estate LLC, dba Coldwell Banker Commercial Affiliates. All Rights Reserved. Coldwell Banker Real Estate LLC, dba Coldwell Banker Commercial Affiliates fully supports the principles of the Equal Opportunity Act. Each Office is Independently Owned and Operated. Coldwell Banker Commercial and the Coldwell Banker Commercial Logo are registered service marks owned by Coldwell Banker Real Estate LLC, dba Coldwell Banker Commercial Affiliates.

Coldwell Banker Commercial
HARTUNG
 3303 Thomasville Rd, Suite #201
 Tallahassee, FL 32308
 850.386.6160