



7001 Lantana Road, Lake Worth, FL 33467



**William Domsky**

Lee & Associates

7925 NW 12th St, Suite 301, Doral, FL 33126

[wdomsky@lee-associates.com](mailto:wdomsky@lee-associates.com)

(305) 235-1500 Ext: 1019



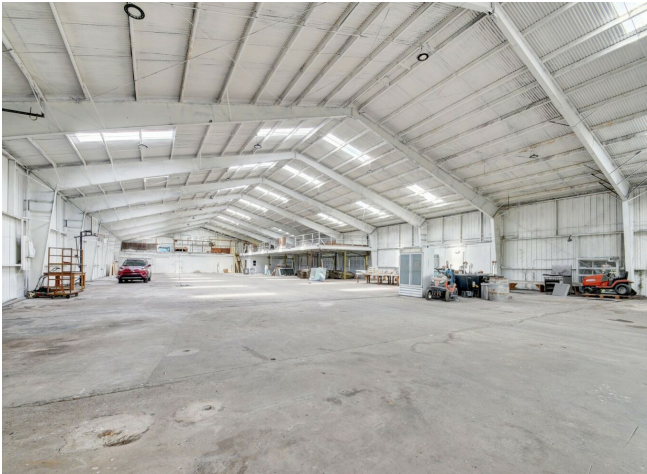
# 7001 Lantana Road

\$12.50 /SF/Yr

Zoning allows for Warehouse distribution, light industrial and agricultural use. Column free warehouse space. Newly paved driveway entrance and parking lot surrounding the building.

+/- 2.5k SF of renovated Office Space with a separate entrance. Plenty of land available for storage....

- Warehouse distribution, Light industrial/agricultural



Rental Rate:	\$12.50 /SF/Yr
Property Type:	Industrial
Property Subtype:	Warehouse
Rentable Building Area:	27,024 SF
Year Built:	1964
Rental Rate Mo:	\$1.04 USD/SF/Mo

1st Floor

Space Available	27,024 SF
Rental Rate	\$12.50 /SF/Yr
Date Available	Now
Service Type	Triple Net (NNN)
Office Size	2,500 SF
Space Type	Relet
Space Use	Industrial
Lease Term	Negotiable

Newly paved driveway entrance and parking lot surrounding the building. +/- 2.5k SF of renovated Office Space with a separate entrance. Plenty of land is available for storage.



## Property Photos



7001 Lantana Road Lake Worth, FL 3