

**FOR SALE  
OR  
LEASE**

FOR SALE OR LEASE: 22 Acre Mix-Use Development

11101 183A Leander, TX 78641

**CADRE**  
CONSTRUCTION

**HUFFMAN**

**BLUE  
FIN**  
DESIGN



Ron Evans - (512) 750-1866  
revans@huffmanbuilders.com  
Broker License: TX 409993

Kris Manthos - (512) 595-1864  
kmanthos@kudurealty.com  
Agent License: TX 760593

[www.kudurealty.com](http://www.kudurealty.com)  
14205 N. Mopac Expy, Suite 450  
Austin, TX 78728

# PROPERTY SUMMARY

FOR SALE OR LEASE: 22 Acre Mix-Use Development

11101 183A Leander, TX 78641

## PROPERTY SUMMARY:

- Prime location adjacent to St. David's Hospital Campus
- Frontage on 183 A toll road
- Less than a mile away from Leander's new town hall location
- Pad site and build-to-suit available
- Sale and Lease options available
- Will include: Medical/Professional office park, retail, bank, hotel, and restaurants
- Leander is one of the fastest growing cities in america



The material contained in this memorandum is based in part on information furnished to Kudu Realty Partners by sources deemed reliable. The information is believed to be accurate in all material respects, but no representations or warranty, expressed or implied, is made by any party. Nothing contained herein should be relied upon as a promise or representation as to the future. Recipients should conduct their own investigation and analysis.

(512) 750-1866

[www.kudurealty.com](http://www.kudurealty.com)

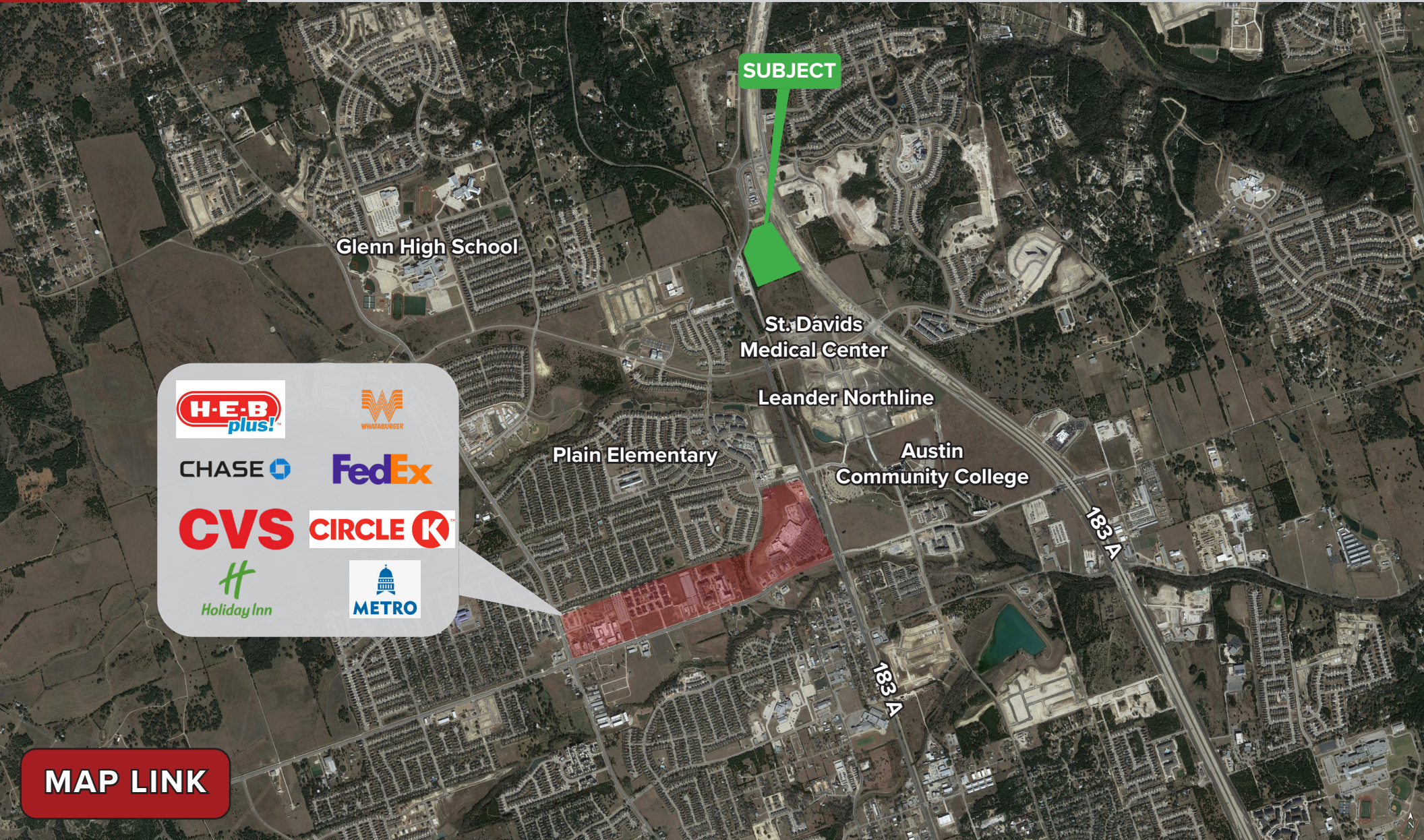
14205 N. Mopac Expy, Suite 450

Austin, TX 78728

# AREA MAP

FOR SALE OR LEASE: 22 Acre Mix-Use Development

11101 183A Leander, TX 78641



SUBJECT

Glenn High School

St. Davids  
Medical Center

Leander Northline

Plain Elementary

Austin  
Community College



MAP LINK



The material contained in this memorandum is based in part on information furnished to Kudu Realty Partners by sources deemed reliable. The information is believed to be accurate in all material respects, but no representations or warranty, expressed or implied, is made by any party. Nothing contained herein should be relied upon as a promise or representation as to the future. Recipients should conduct their own investigation and analysis.

(512) 750-1866

[www.kudurealty.com](http://www.kudurealty.com)

14205 N. Mopac Expy, Suite 450

Austin, TX 78728