
1.056 ACRES
INDUSTRIAL
DEVELOPMENT SITE

15900 Earl Bradford Ct.
Pflugerville, Texas 78660

Location:	Corner of Central Commerce Drive and Earl Bradford Ct.
Size:	1.056 Acres
Zoning:	None/2-Mile COA ETJ
Entitlements:	Platted Lot
Impervious Cover:	65 Percent
Concept Plan:	One-Story Building With 8,250 Square Feet
Frontage:	Earl Bradford Ct: Approximately 258 Linear Feet Central Commerce Drive: Approximately 172 Linear Feet
Topo:	< 1% Slope From Central Commerce Dr. to Rear of Property
Utility Service:	
Water:	COA 12" Line Stubbed to Property along Earl Bradford Ct.
Sewer:	COA 15" Line Located in Rear of Property
Electric:	COA
Gas:	Texas Gas Service
Price:	\$550,000.00

Close-in site with excellent access to IH-35

JOSEPH HOOVER COMPANY

REAL ESTATE INVESTMENTS

512.457.9925

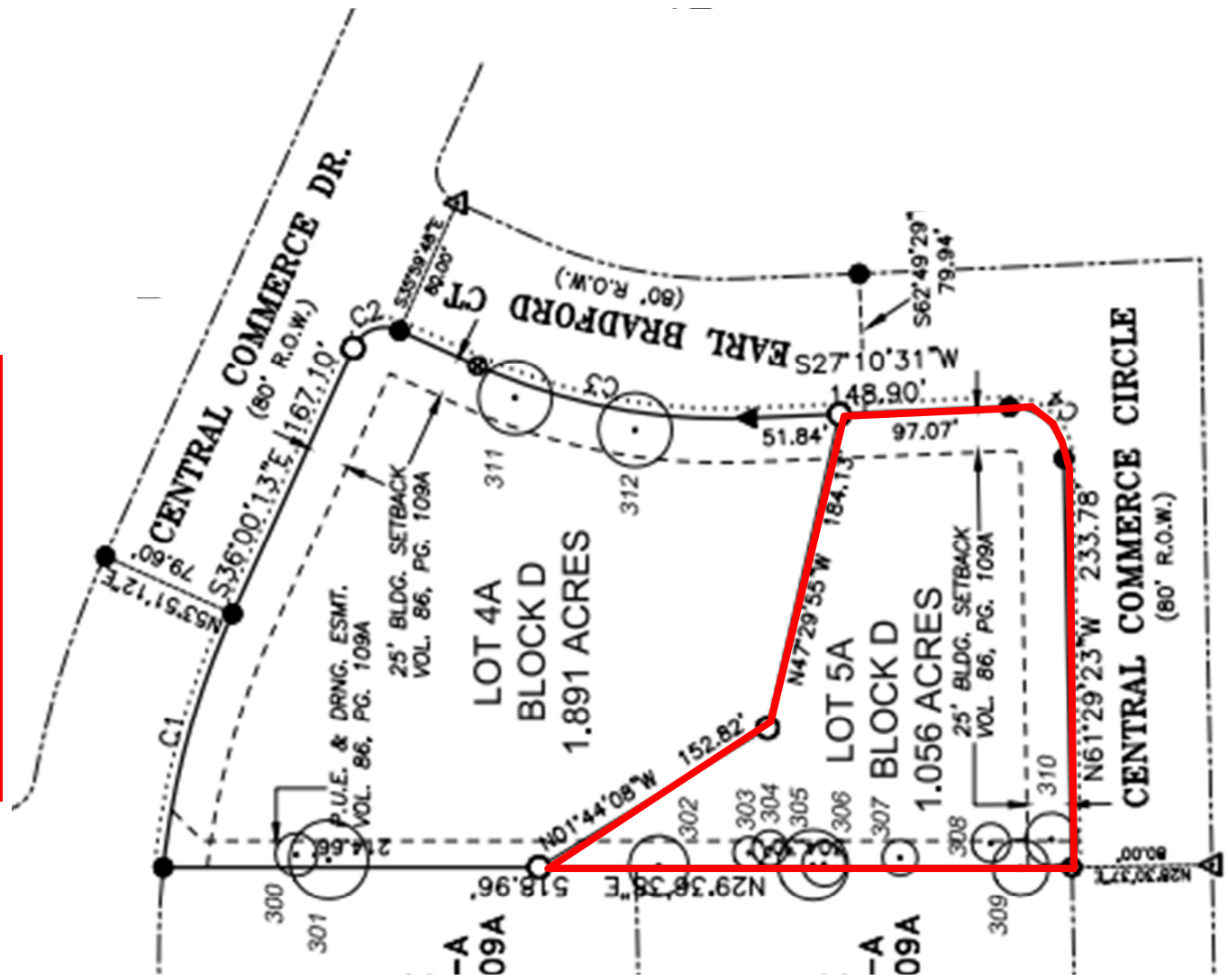
hoover@josephhoover.com

THE INFORMATION CONTAINED HEREIN WAS OBTAINED FROM SOURCES BELIEVED RELIABLE; HOWEVER, URBANSPEACE COMMERCIAL AND JOSEPH HOOVER COMPANY MAKE NO GUARANTEES, WARRANTIES OR REPRESENTATION AS TO THE COMPLETENESS OR ACCURACY THEREOF. THE PRESENTATION OF THIS PROPERTY IS SUBMITTED SUBJECT TO ERRORS, OMISSIONS, CHANGE OF PRICE, PRIOR SALE OR LEASE OR WITHDRAWAL WITHOUT NOTICE

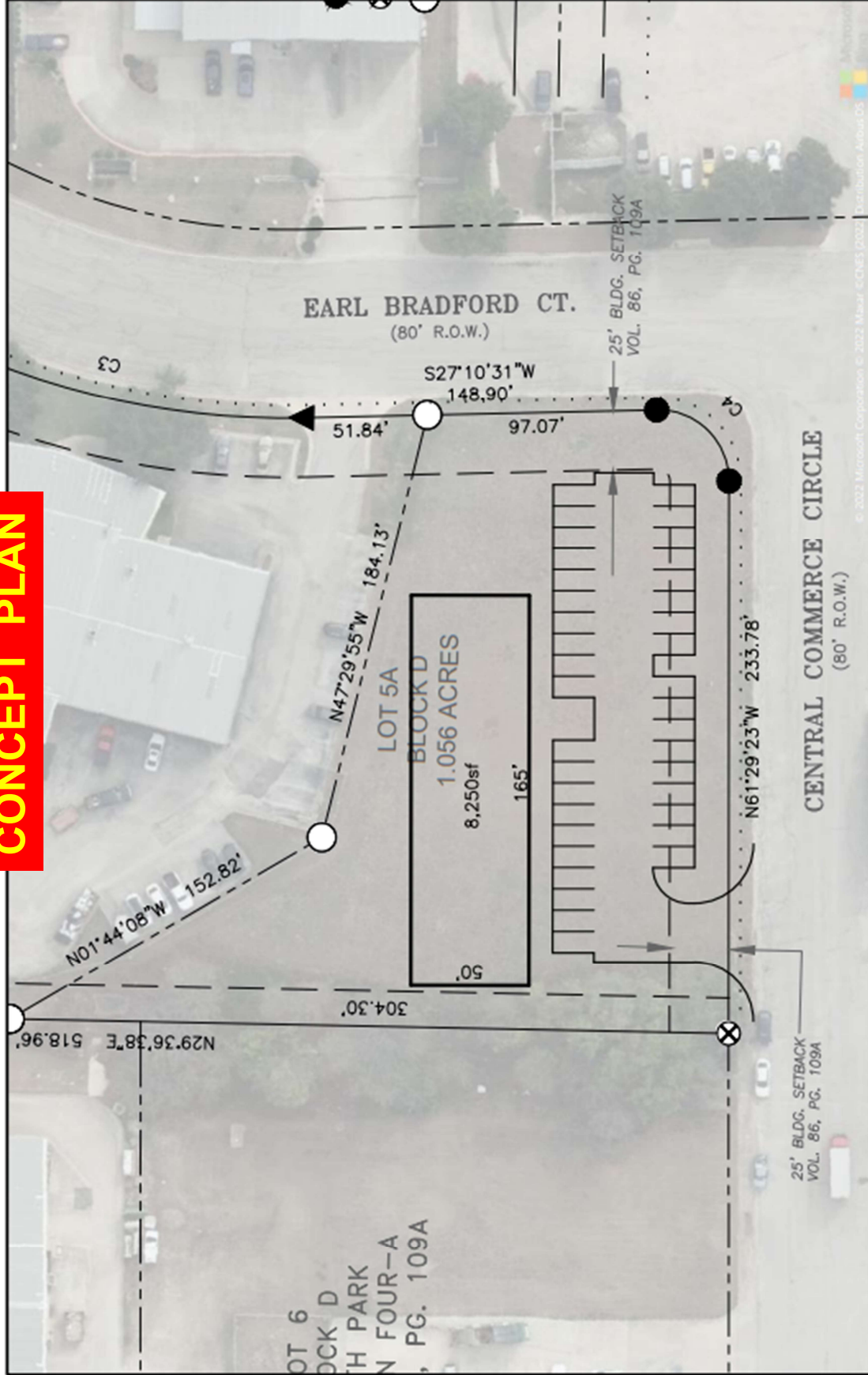
15900 Earl Bradford Court Pflugerville, Texas



RECORDED PLAT



CONCEPT PLAN



SHEET TITLE
PROJECT NAME
April 11, 2022

2P CONSULTANTS, LLC
203 E. MAIN STREET, SUITE 204
ROUND ROCK, TEXAS 78664
512-344-9664
TBPE FIRM #F-19351

