



Colliers

Accelerating success.

Bethany Christian Church

3223 Westheimer Road
Houston, Texas 77098

Vaughan Ford

Senior Vice President
+1 713 830 2117
vaughan.ford@colliers.com

Bill Byrd, CCIM, SIOR

Principal & Director
+1 713 830 2131
bill.byrd@colliers.com

Robert "Bob" Parsley

Chairman & Principal
+1 713 830 2121
bob.parsley@colliers.com

Property Highlights



Colliers exclusively represents Bethany Christian Church in the sale of the 3.243 acres and improvements at 3223 Westheimer Road. Bethany Christian Church was originally built in 1947 with additional improvements added over the years. The property has street frontage on three sides including Westheimer Road, Bammel Lane, and Eastside Street.



View from main entrance on Bammel Lane



Westheimer view of property

Seller's Post-Closing Preferences:

- Bethany desires to continue its worship services and ministry at this location for an agreed upon time period.
- Provisions for Bethany Christian School to continue its operations as a ministry.
- Provisions for Bethany School of Music to continue its operations as a ministry.

This document has been prepared by Colliers International for advertising and general information only. Colliers International makes no guarantees, representations or warranties of any kind, expressed or implied, regarding the information including, but not limited to, warranties of content, accuracy and reliability. Any interested party should undertake their own inquiries as to the accuracy of the information. Colliers International excludes unequivocally all inferred or implied terms, conditions and warranties arising out of this document and excludes all liability for loss and damages arising there from. This publication is the copyrighted property of Colliers International and/or its licensor(s). ©2022. All rights reserved.

Property Details

Property Address:

3223 Westheimer Rd
Houston, TX 77098

[Click Here to View Map:](#)



Size: 3.243 Acres (141,265 SF)

Building Size: Approx 40,397 sq ft

Price: TBD by Market

FEATURES

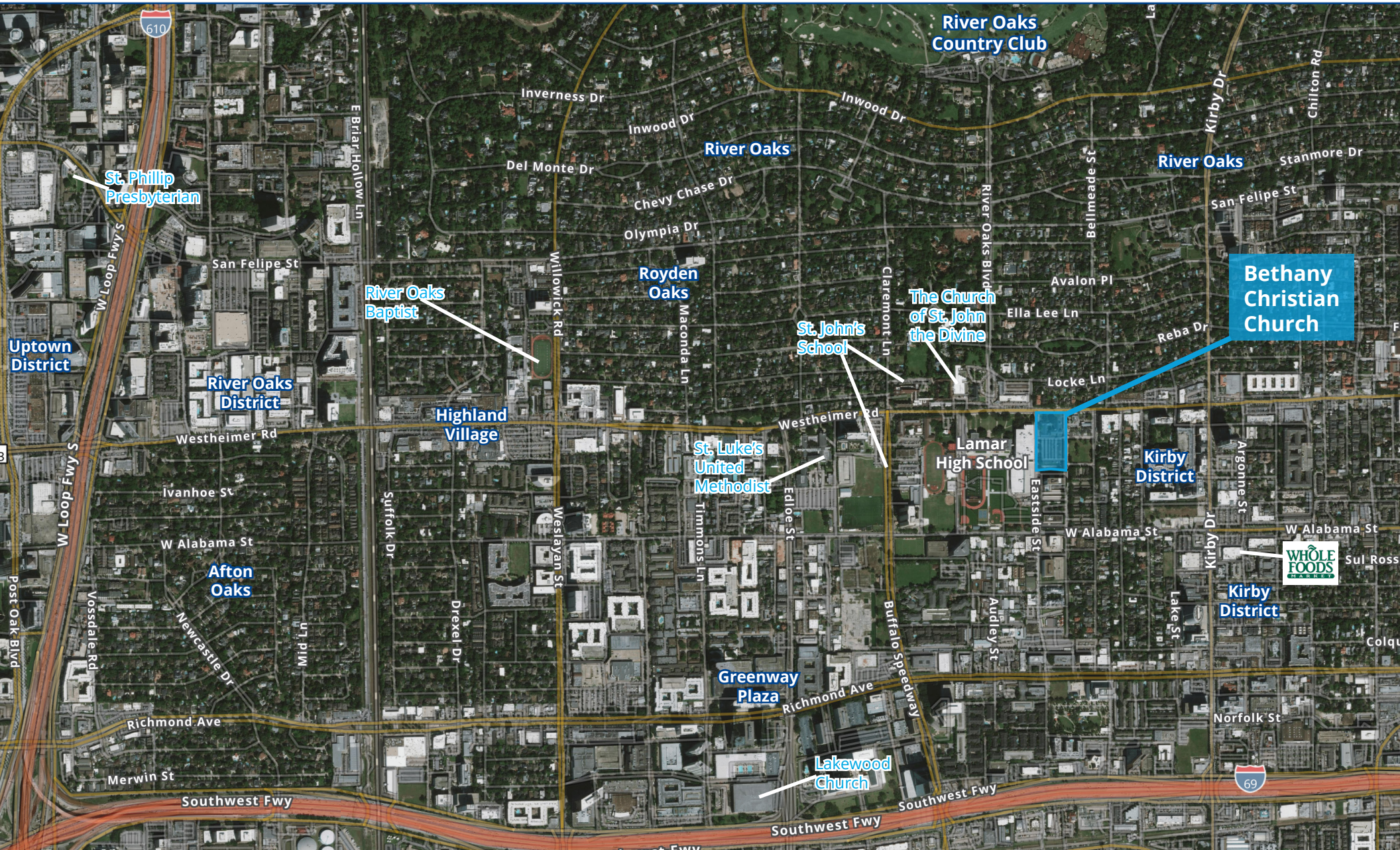
- Prime Inner Loop location on Westheimer Road
- Excellent access from every direction | Frontage on 3 streets
- Beautiful Sanctuary for church services and weddings
- Sanctuary Seating Capacity: 631
- On site gated parking lot, 174 parking spaces
- Close proximity to Kirby District, River Oaks, & CBD
- An estimated 27k cars pass by on Westheimer Rd per day

2021 DEMOGRAPHICS

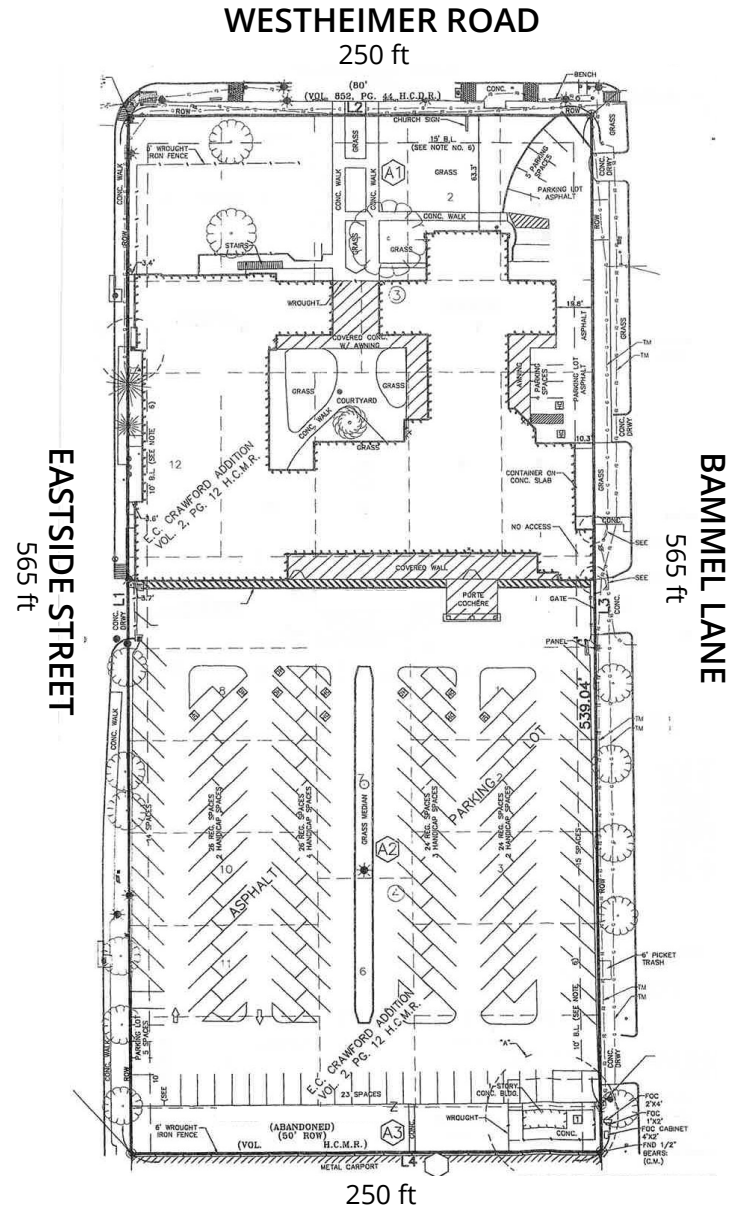
	1 mi	3 mi	5 mi
Population	20,079	195,356	518,489
HH Income	\$173,856	\$169,636	\$140,791
Daytime Workers	59,903	294,214	630,302



Location Aerial



Property Survey



Property Photos



Bethany Christian Church in **1947**



Exterior Photo of Church



Bethany Christian Church in **2022**



Interior Photo of Church

Exterior Photos



Interior Photos





Vaughan Ford
Senior Vice President
+1 713 830 2117
vaughan.ford@colliers.com

Bill Byrd, CCIM, SIOR
Principal & Director
+1 713 830 2131
bill.byrd@colliers.com

Robert "Bob" Parsley
Chairman & Principal
+1 713 830 2121
bob.parsley@colliers.com