

For Lease

Downtown Office Space

1,926 SF | \$22.50 SF

500 Delaney Avenue

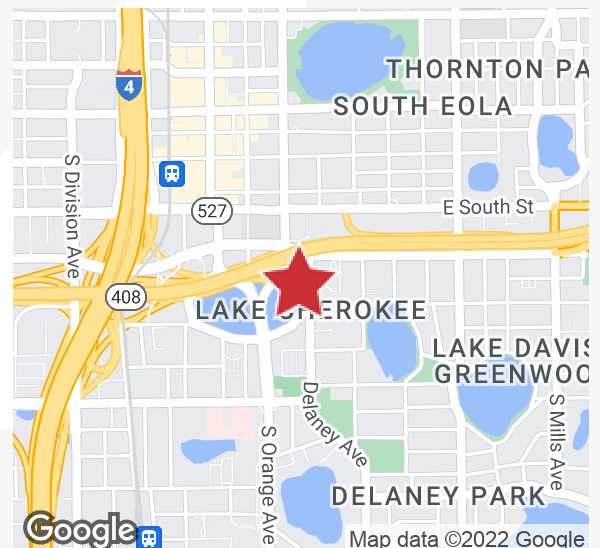
Orlando, Florida 32801

Property Highlights

- Great Downtown Orlando location with extremely rare free parking
- Suite 200 - mostly open floor plan with 1 private office, kitchenette, conference room and restroom
- 22,500± SF, 3-story brick building – attractive and distinctive
- Common area conference/training room available
- Immediate access to SR 408 (East-West), I-4, Orange Avenue and Rosalind Avenue
- Across the street from Lake Lucerne - very peaceful setting
- Onsite management is very responsive
- Walking distance to Orlando City Hall, Dr. Phillips Center and numerous restaurants and shops

OFFERING SUMMARY

Available SF	1,926 SF
Lease Rate	\$22.50 SF (MG)



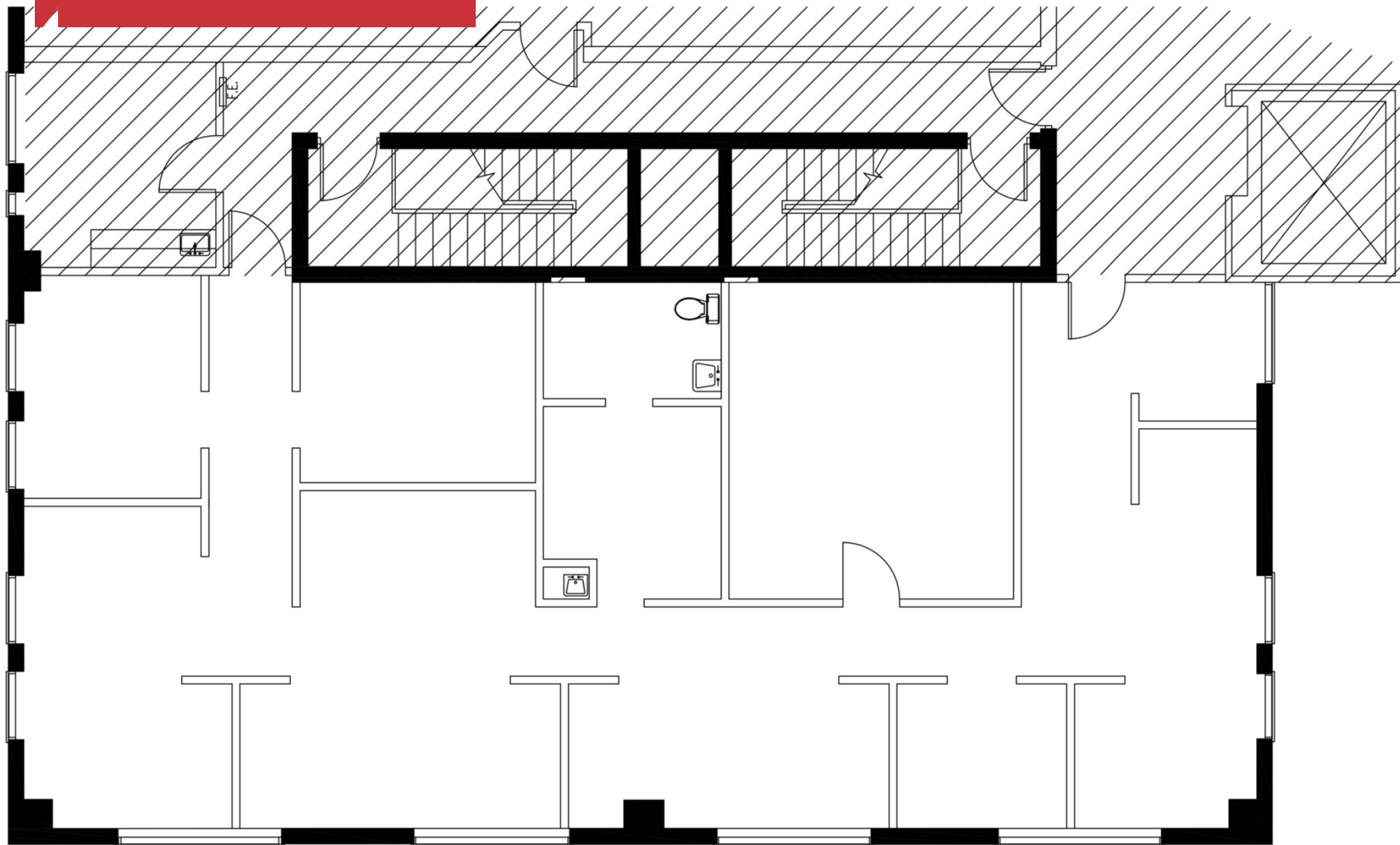
For more information

Jeffrey Bloom, CCIM

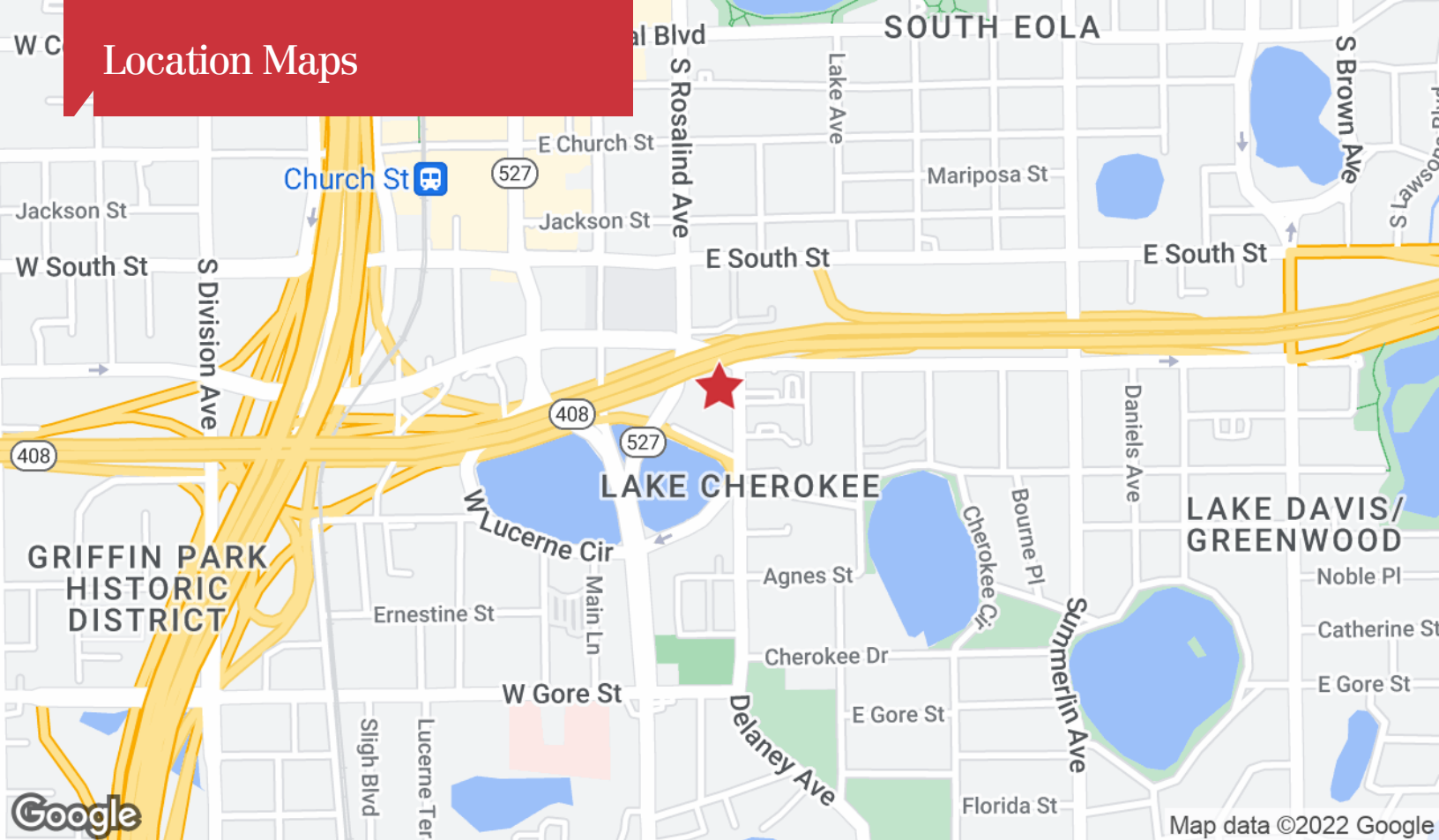
O: 407 949 0709

jbloom@realvest.com

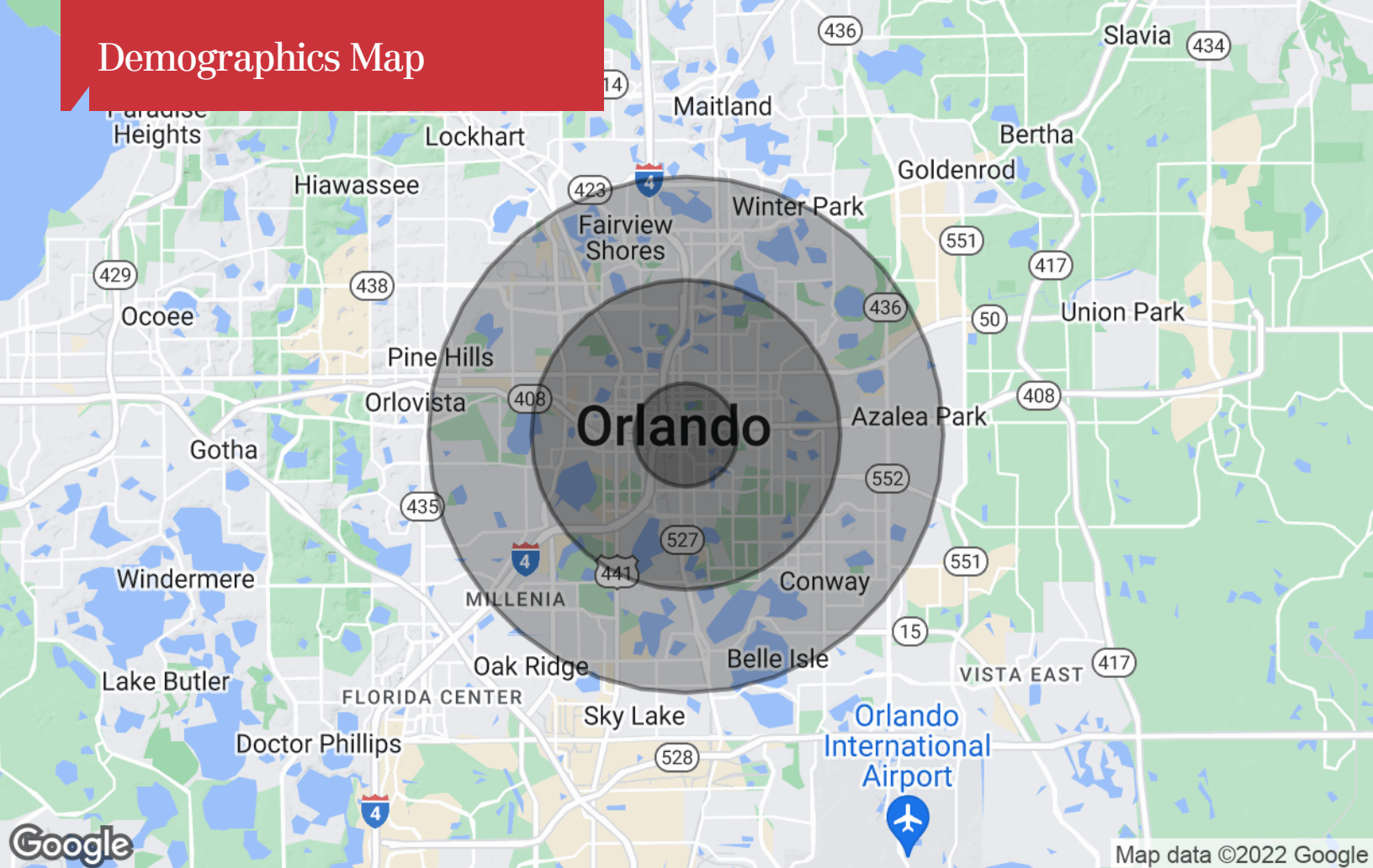
Floor Plan - Suite 200



Location Maps



Demographics Map



Population

	1 Mile	3 Miles	5 Miles
TOTAL POPULATION	12,914	94,428	263,562
MEDIAN AGE	37.5	37.0	35.8
MEDIAN AGE (MALE)	37.5	35.9	34.2
MEDIAN AGE (FEMALE)	37.3	38.0	37.7

Households & Income

	1 Mile	3 Miles	5 Miles
TOTAL HOUSEHOLDS	6,559	41,521	107,905
# OF PERSONS PER HH	2.0	2.3	2.4
AVERAGE HH INCOME	\$65,496	\$65,581	\$63,568
AVERAGE HOUSE VALUE	\$424,400	\$318,030	\$313,406

* Demographic data derived from 2020 ACS - US Census