

**CALL FOR MORE INFORMATION**



**FOR SALE**

Call for pricing

**AVAILABLE LAND**

2 Acres

**PROPERTY HIGHLIGHTS**

- Lots of frontage on FM 529 Freeman Rd
- Utilities available
- Excellent visibility in a growing area
- Access easement to Fry Rd

**TRAFFIC COUNT**

Fry Rd: 20,393 VPD  
(CoStar 2018)

**AREA TRAFFIC GENERATORS**



**PROPERTY SNAPSHOT**



**105,826**  
2021 POPULATION  
3 MILE RADIUS



**37,617**  
2021 DAYTIME POPULATION  
3 MILE RADIUS



**\$89,173**  
2021 AVERAGE INCOME  
3 MILE RADIUS



**20,393 VPD**  
FRY RD



The information contained herein was obtained from sources deemed reliable; however, RESOLUT RE makes no guaranties, warranties or representations to the completeness or accuracy thereof. The presentation of this real estate information is subject to errors; omissions; change of price; prior sale or lease; or withdrawal without notice. RESOLUT RE, which provides real estate brokerage services, is a division of Reliance Retail, LLC, a Texas Limited Liability Company.

For more information,  
call 281.445.0033

[www.resolutre.com](http://www.resolutre.com)

# 2 Acres on FM 529

SWC OF FRY RD AND FM 529  
0 FM 529 AND FRY ROAD HOUSTON, TX 77433



For more information,  
call 281.445.0033

[www.resolutre.com](http://www.resolutre.com)



The information contained herein was obtained from sources deemed reliable; however, RESOLUT RE makes no guaranties, warranties or representations to the completeness or accuracy thereof. The presentation of this real estate information is subject to errors; omissions; change of price; prior sale or lease; or withdrawal without notice. RESOLUT RE, which provides real estate brokerage services, is a division of Reliance Retail, LLC, a Texas Limited Liability Company.

# 2 Acres on FM 529

SWC OF FRY RD AND FM 529  
0 FM 529 AND FRY ROAD HOUSTON, TX 77433



For more information,  
call 281.445.0033

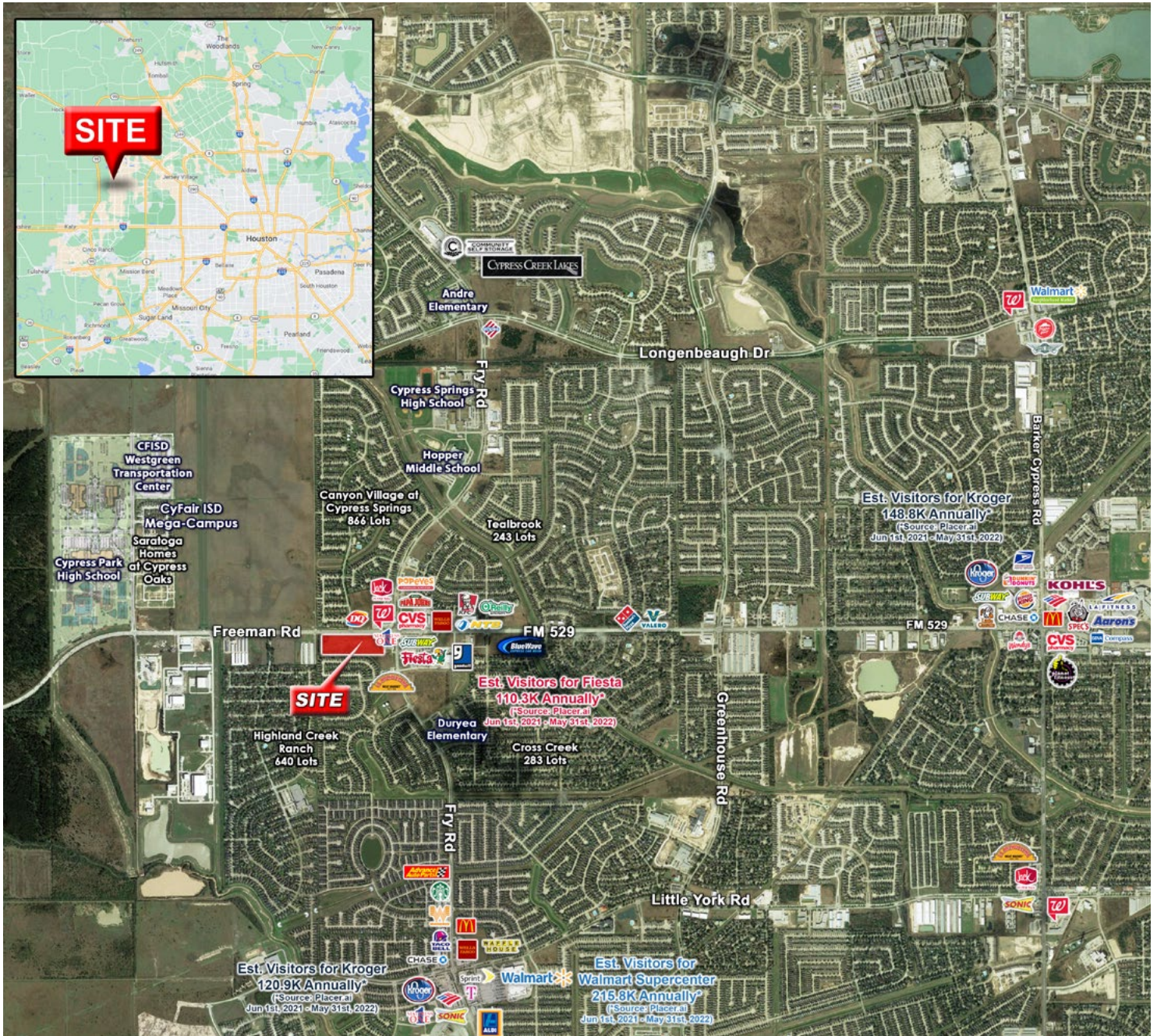
[www.resolutre.com](http://www.resolutre.com)



The information contained herein was obtained from sources deemed reliable; however, RESOLUT RE makes no guaranties, warranties or representations to the completeness or accuracy thereof. The presentation of this real estate information is subject to errors; omissions; change of price; prior sale or lease; or withdrawal without notice. RESOLUT RE, which provides real estate brokerage services, is a division of Reliance Retail, LLC, a Texas Limited Liability Company.

# 2 Acres on FM 529

SWC OF FRY RD AND FM 529  
0 FM 529 AND FRY ROAD HOUSTON, TX 77433



For more information,  
call 281.445.0033

[www.resolutre.com](http://www.resolutre.com)



The information contained herein was obtained from sources deemed reliable; however, RESOLUT RE makes no guaranties, warranties or representations to the completeness or accuracy thereof. The presentation of this real estate information is subject to errors; omissions; change of price; prior sale or lease; or withdrawal without notice. RESOLUT RE, which provides real estate brokerage services, is a division of Reliance Retail, LLC, a Texas Limited Liability Company.

