

cRc

nationwide

GROUND LEASE - COMMERCIAL LAND

4612 WEST 3500 SOUTH, WEST VALLEY CITY 84120



PROPERTY INFORMATION

- 1.0 Acre - C-2 Zoning
- Allowed Uses:
Auto Sales, Car Wash, Auto Service, Parts, Retail, Restaurant, Bank, Medical, Office
- 100' Frontage on 3500 South
- One Mile from Bangerter Highway
- Utilities in Street
- 31,000 Annual Daily Traffic on 3500 South

\$5,800.00/Month Ground Lease / 10 Years + / 3% Escalations Every 2nd Year

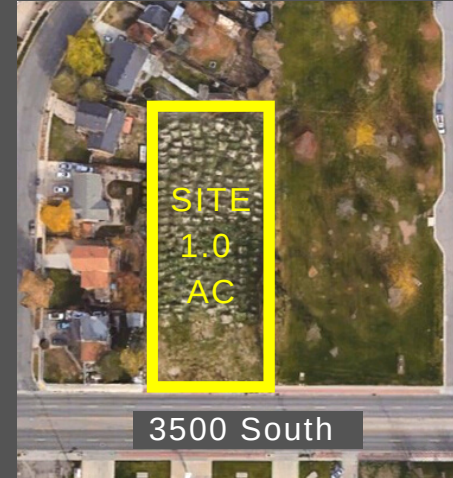
CHRISTOPHER WILSON 801.783.6269
christopher.wilson@crcnationwide.com

SAM CHRISTENSEN 801.361.9798
sam.christensen@crcnationwide.com



GROUND LEASE - COMMERCIAL LAND

4612 WEST 3500 SOUTH, WEST VALLEY CITY 84120



This information is given with the understanding that all negotiations and/or real estate activity related to the property described above shall be conducted through this cRc Nationwide office. The above information while not guaranteed, was obtained from sources we believe to be reliable.

CHRISTOPHER WILSON 801.783.6269
christopher.wilson@crcnationwide.com

SAM CHRISTENSEN 801.361.9798
sam.christensen@crcnationwide.com