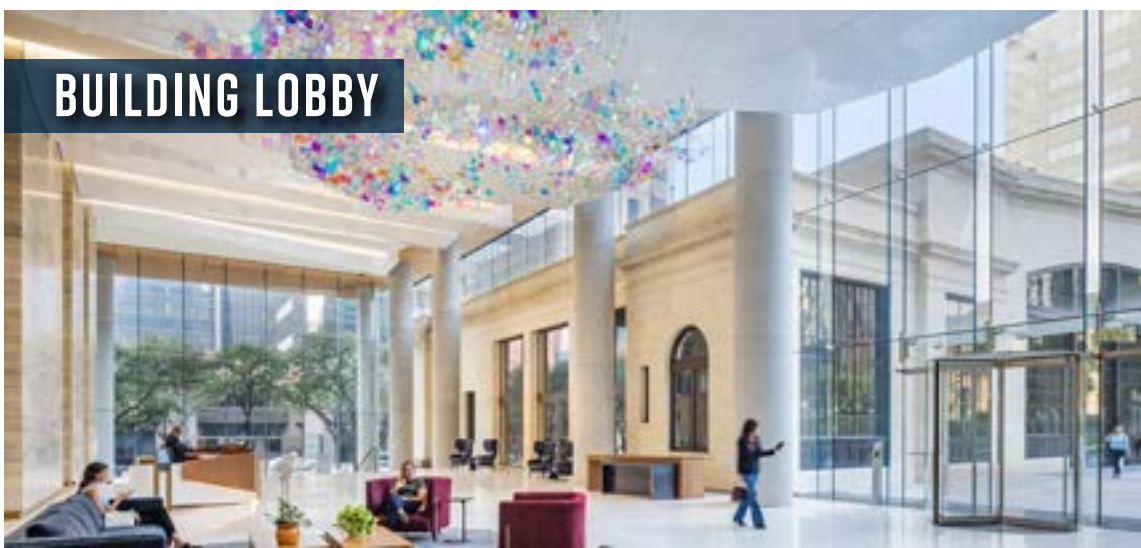




INDEED TOWER

FURNISHED DOWNTOWN SUBLEASE -- 10,040 SF AVAILABLE NOW



CONFERENCE CENTER

BUILDING LOBBY

OUTDOOR PLAZA

PROPERTY OVERVIEW

200

200 W 6TH ST.

26TH FLOOR

Size:	10,040 SF
Availability:	Immediate
Sublease Term:	Flexible
Rental Rate:	Contact Broker
2022 Est. Operating Expenses:	\$30.26 /SF
Parking Spaces:	15 Unreserved 3 Reserved

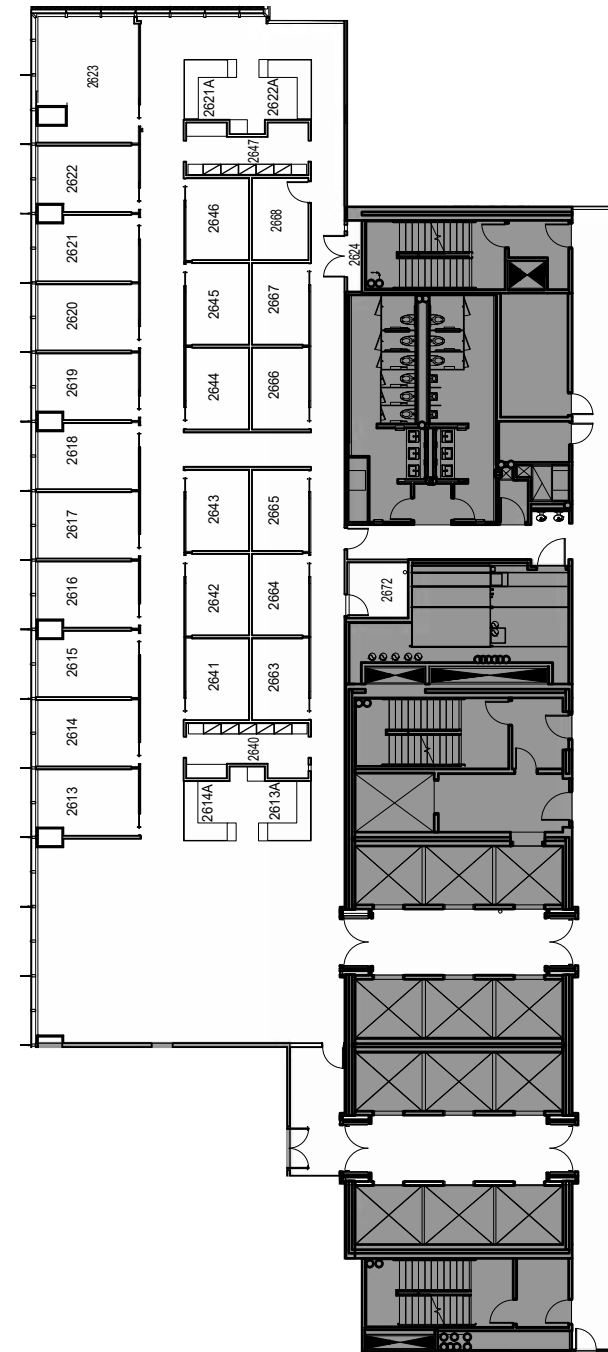
26TH FLOOR



INDEED TOWER

SPACE FEATURES:

- 10,040 SF sublease opportunity in one of Austin's newest towers
- Class "A+" professional office design – furniture available
- Elevator lobby entrance to the suite
- Amenity-rich location in the heart of Downtown Austin
- Incredible views facing The Texas Capitol to the North and Downtown Austin to the West
- Abundant natural light with glass-front offices and floor-to-ceiling vision glass
- Sustainability – LEED Platinum and EV Parking Chargers
- Planned on-site restaurant and preservation of the adjacent historic Post Office space
- First Class amenities including an 8,500 SF fitness center, a 7,500 SF tech-forward conference center with yoga/private fitness classroom, and a 17,000 SF outdoor plaza





INDEED TOWER

JEFF PACE | 512.538.1040 | PACE@HPITX.COM

CASE MCCOY | 512.538.0068 | CMCCOY@HPITX.COM