



CAPITOLTOWER

FURNISHED DOWNTOWN SUBLEASE | 13,376 SF AVAILABLE NOW

PROPERTY OVERVIEW

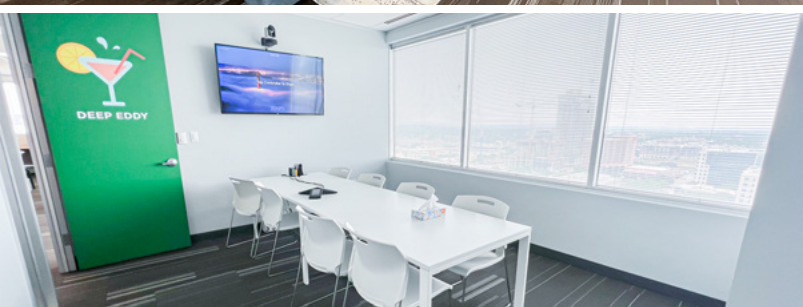
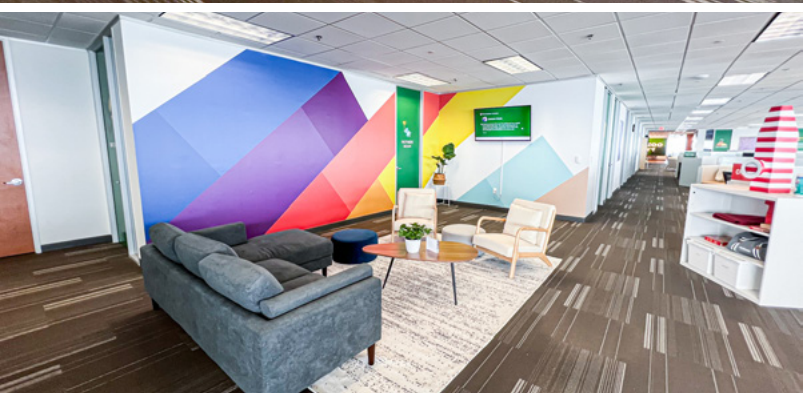


206 E 9TH ST.

SUITE 1700

Size:	13,376 SF
Availability:	Immediate
Lease Expiration:	September 30, 2026
Rental Rate:	Contact Broker
2022 Est. Operating Expenses:	\$25.41/SF
Parking Spaces:	3:1,000 SF

17TH FLOOR

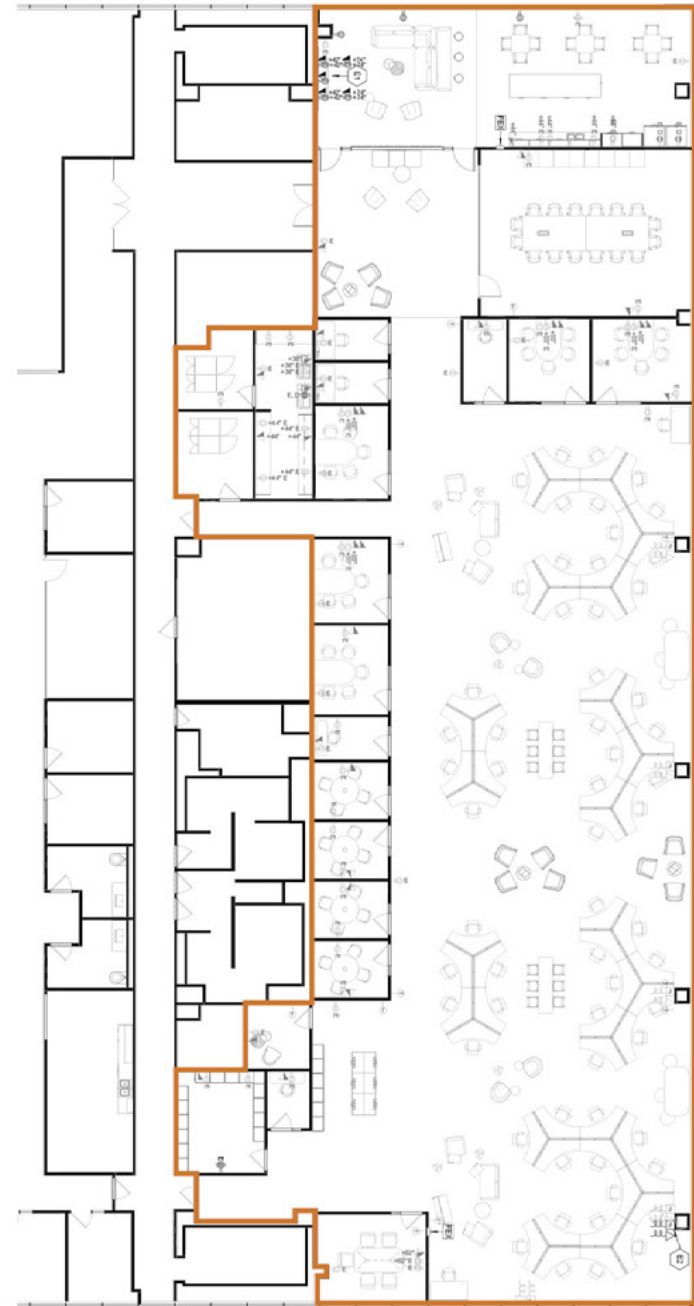


CAPITOL TOWER

SPACE FEATURES:

- Newly built out creative office
- Fully furnished and move in ready
 - » Furniture negotiable
- Ample natural light with incredible views of downtown and the Capitol
- Primarily open office configuration with large conference rooms and multiple interior breakout rooms
- Great location with high parking ratio and plenty of walkable amenities

 **TAKE A VIRTUAL TOUR**





HP

HPI

TENANT ADVISORS

CAPITOL TOWER

CASE MCCOY | 512.538.0068 | CMCCOY@HPITX.COM