



GRANT PLAZA

621 East 6th Street - Austin, Texas 78701

**REDUCED
RATE
\$32 NNN**

[Take Grant Plaza Video Tour →](#)



AVAILABLE SUITES

SUITE	SQ. FT.
100	2,283
200	3,555

5,838 SF Total

BUILDING FEATURES



Two-story Creative Office Space



Private Outdoor Courtyard Plaza



Multiple Kitchen Areas and Restrooms



Dual Exterior Stairwell Access



Mix of Open Office, Huddle Rooms, and Conference Rooms



Located on Historic East 6th Street in Heart of Downtown Austin

RICHARD PADDOCK
(512) 538-0057
paddock@hpitx.com

J.D. LEWIS
(512) 538-0064
jdlewis@hpitx.com

No warranty or representation, expressed or implied, is made as to the accuracy of the information contained herein, and same is submitted subject to errors, omissions, change of price, rental or other conditions, withdrawal without notice, and to any special listing conditions imposed by the principals.



GRANT PLAZA

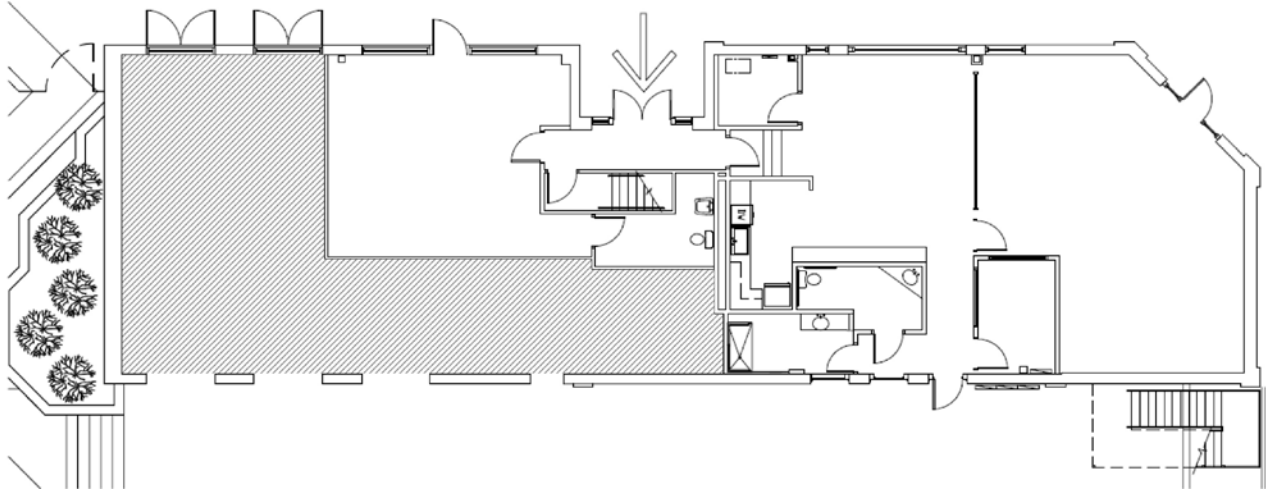
621 East 6th Street - Austin, Texas 78701

1st Floor

Available Now

2,283 SF

Available SF

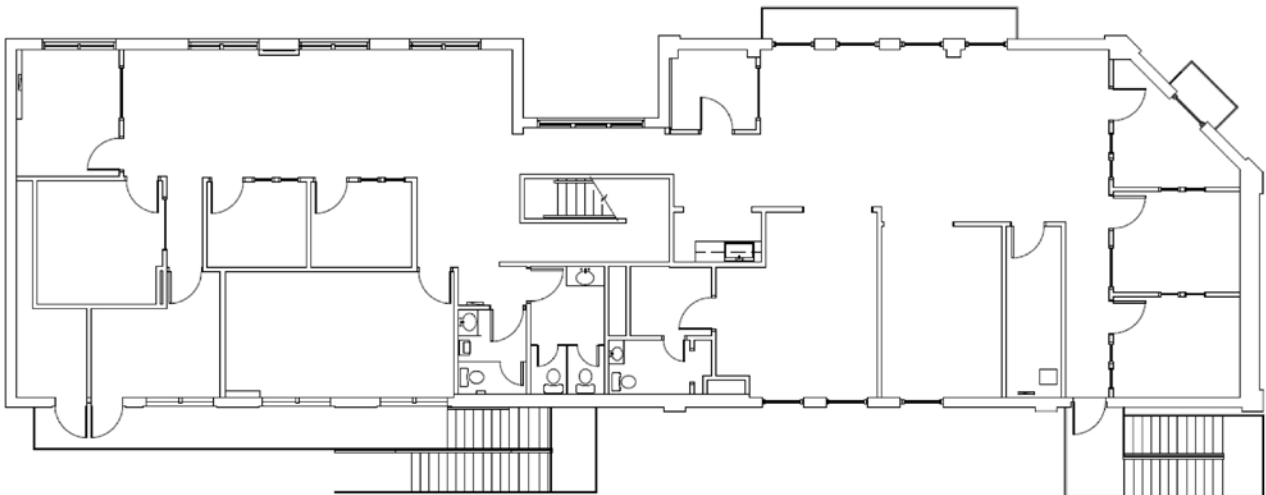


2nd Floor

Available Now

3,555 SF

Available SF



RICHARD PADDOCK
(512) 538-0057
paddock@hpitx.com

J.D. LEWIS
(512) 538-0064
jdlewis@hpitx.com

No warranty or representation, expressed or implied, is made as to the accuracy of the information contained herein, and same is submitted subject to errors, omissions, change of price, rental or other conditions, withdrawal without notice, and to any special listing conditions imposed by the principals.