



**1011** NORTH  
LAMAR

RICHARD PADDOCK  
(512) 538-0057  
paddock@hpitx.com

J.D. LEWIS  
(512) 538-0064  
jdlewis@hpitx.com



# 4,345 SF Office Space

At North Lamar & West 12th Street



Located at North Lamar Blvd and W 12th St near Downtown, the Texas Capitol, and the University of Texas



12 Designated Parking Spaces (2 Covered)



Near multiple outdoors recreation areas including Lady Bird Lake, Pease Park, and Barton Creek



Surrounded by various popular food & drink spots



Capital MetroRail Downtown Station  
4 min | 1.6 mi

University of Texas



House Park



Lamar Blvd

1011 NORTH LAMAR



Texas Capitol

Downtown Austin

Lady Bird Lake

Auditorium Shores

1011 NORTH LAMAR

Duncan Park



raw REPUBLIC



House Park

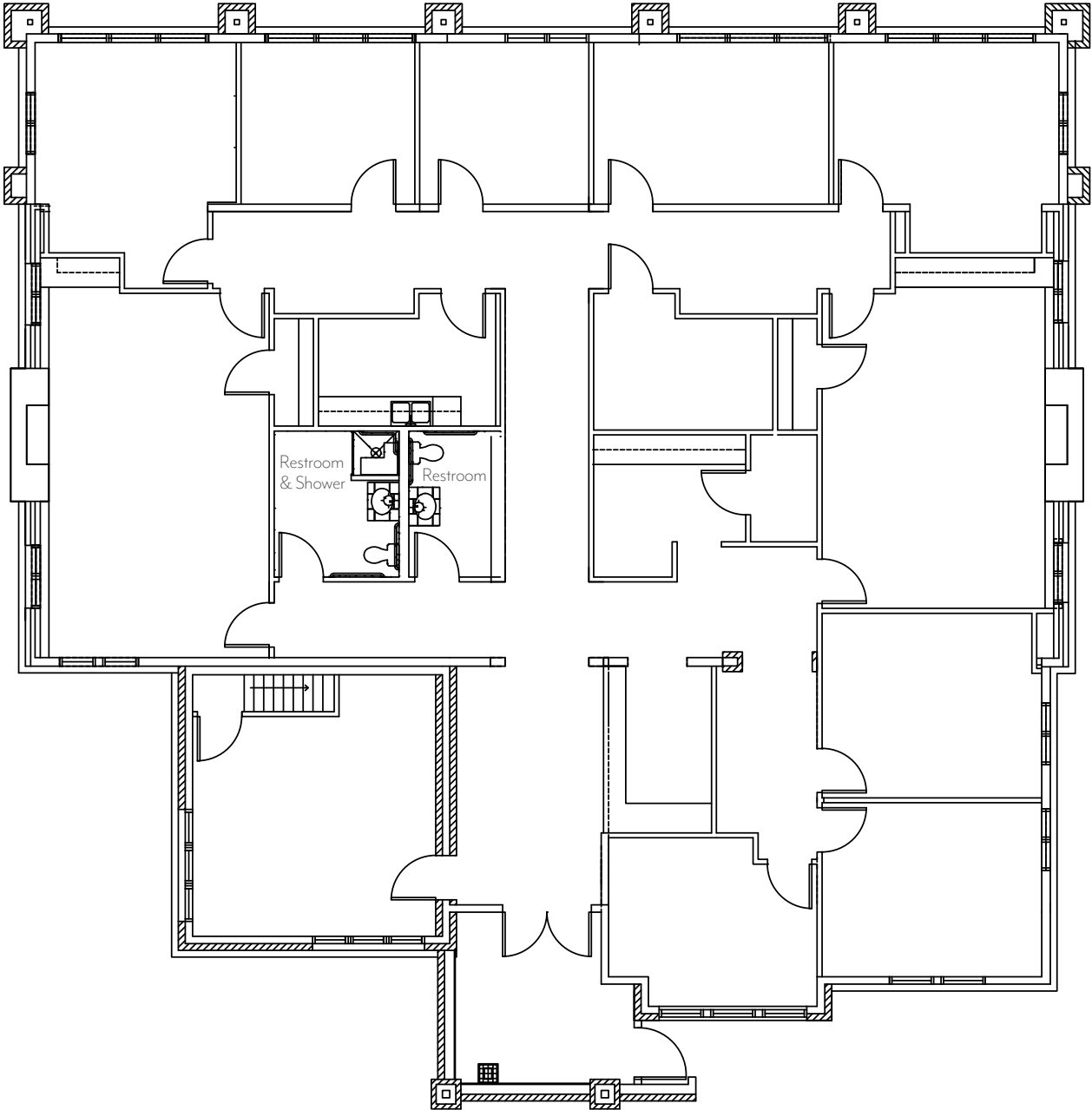
Lamar Blvd

W 12th St



First Floor

4,345 SF



**1011** NORTH LAMAR



Office at Austin's  
Historic  
Hitchin' Post





# 1011 NORTH LAMAR

**RICHARD PADDOCK**  
(512) 538-0057  
[paddock@hpitx.com](mailto:paddock@hpitx.com)

**J.D. LEWIS**  
(512) 538-0064  
[jdlewis@hpitx.com](mailto:jdlewis@hpitx.com)

No warranty or representation, expressed or implied, is made as to the accuracy of the information contained herein, and same is submitted subject to errors, omissions, change of price, rental or other conditions, withdrawal without notice, and to any special listing conditions imposed by the principals.