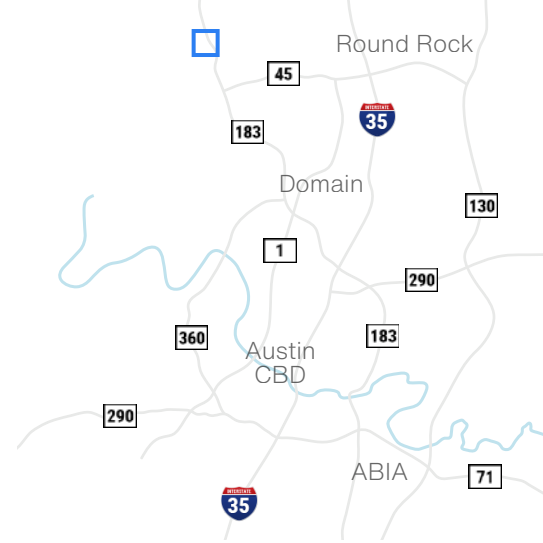


# Cedar Business Park 4

500 Brushy Creek Road - Cedar Park, TX 78613

**5,650 SF**  
**Office/Warehouse**



Available Suites

**Suite 404 - 5,650 SF**

## Building Features



**75% Warehouse**



**25% Office**



**18' Clear Height**



**Front Loading,  
1 Grade-Level Door**



**Jordan McMahon**  
jmcMahon@hpitx.com  
(512) 538-0060

**Davis Bass**  
bass@hpitx.com  
(512) 538-1030

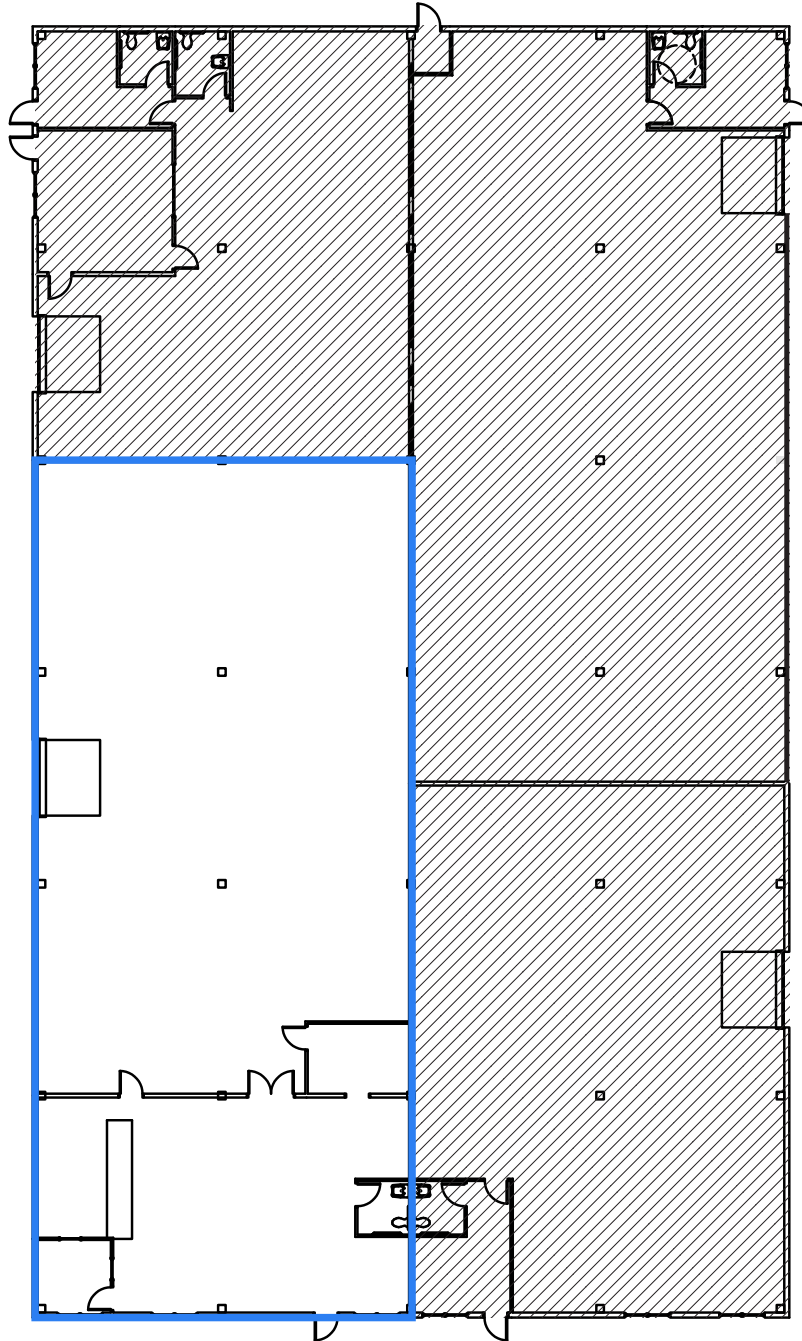
No warranty or representation, expressed or implied, is made as to the accuracy of the information contained herein, and same is submitted subject to errors, omissions, change of price, rental or other conditions, withdrawal without notice, and to any special listing conditions imposed by the principals.

# Cedar Business Park 4

500 Brushy Creek Road - Cedar Park, TX 78613

Suite 404

**5,650 SF**  
**Office/Warehouse**



**Jordan McMahon**  
jcmahon@hpitx.com  
(512) 538-0060

**Davis Bass**  
bass@hpitx.com  
(512) 538-1030

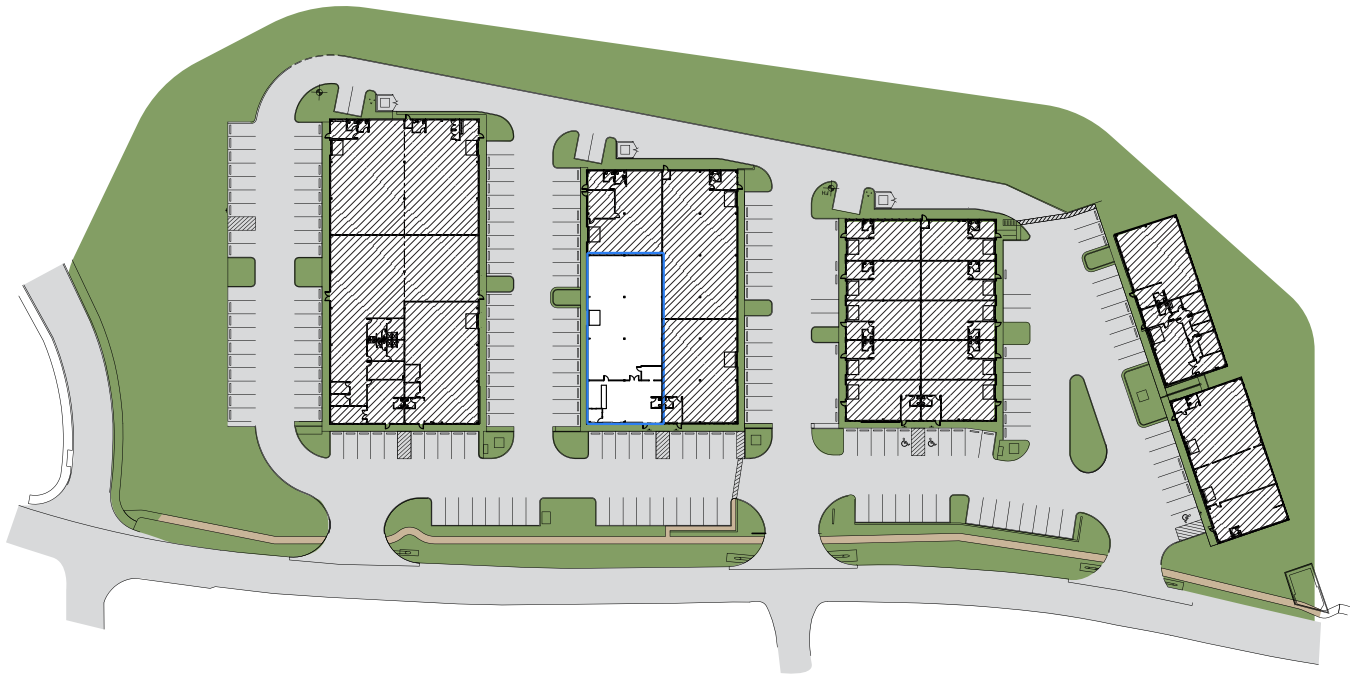
No warranty or representation, expressed or implied, is made as to the accuracy of the information contained herein, and same is submitted subject to errors, omissions, change of price, rental or other conditions, withdrawal without notice, and to any special listing conditions imposed by the principals.

# Cedar Business Park 4

500 Brushy Creek Road - Cedar Park, TX 78613

**Suite 404**

**5,650 SF**  
**Office/Warehouse**



**Jordan McMahon**  
jcmahon@hpitx.com  
(512) 538-0060

**Davis Bass**  
bass@hpitx.com  
(512) 538-1030

No warranty or representation, expressed or implied, is made as to the accuracy of the information contained herein, and same is submitted subject to errors, omissions, change of price, rental or other conditions, withdrawal without notice, and to any special listing conditions imposed by the principals.