

# MURRAY OFFICE SUITE AVAILABLE FOR LEASE

5107 South 900 East, Murray, UT 84117



## PROPERTY INFORMATION

- 4,057 RSF MAIN LEVEL OFFICE AVAILABLE
- NEWLY RENOVATED
- FURNITURE AVAILABLE
- (2) PRIVATE RESTROOMS, (1) WITH A SHOWER
- PERFECT FOR PROFESSIONAL OFFICE (LAWYER, ACCOUNTANT, MORTGAGE CO., ETC.)
- AMPLE PARKING : 4.00/1,000 SF
- TENANT IMPROVEMENTS AVAILABLE
- FIBER AVAILABLE

**LEASE RATE REDUCED:**  
**\$17.50/SF Full Service Gross**

## DEMOGRAPHICS

	1 mile	3 Mile	5 Mile
POPULATION	18,762	141,061	345,992
HOUSEHOLDS	8,097	56,288	130,378
AVG HOUSEHOLD INCOME	\$62,685	\$61,027	\$65,036

## TRAFFIC COUNTS

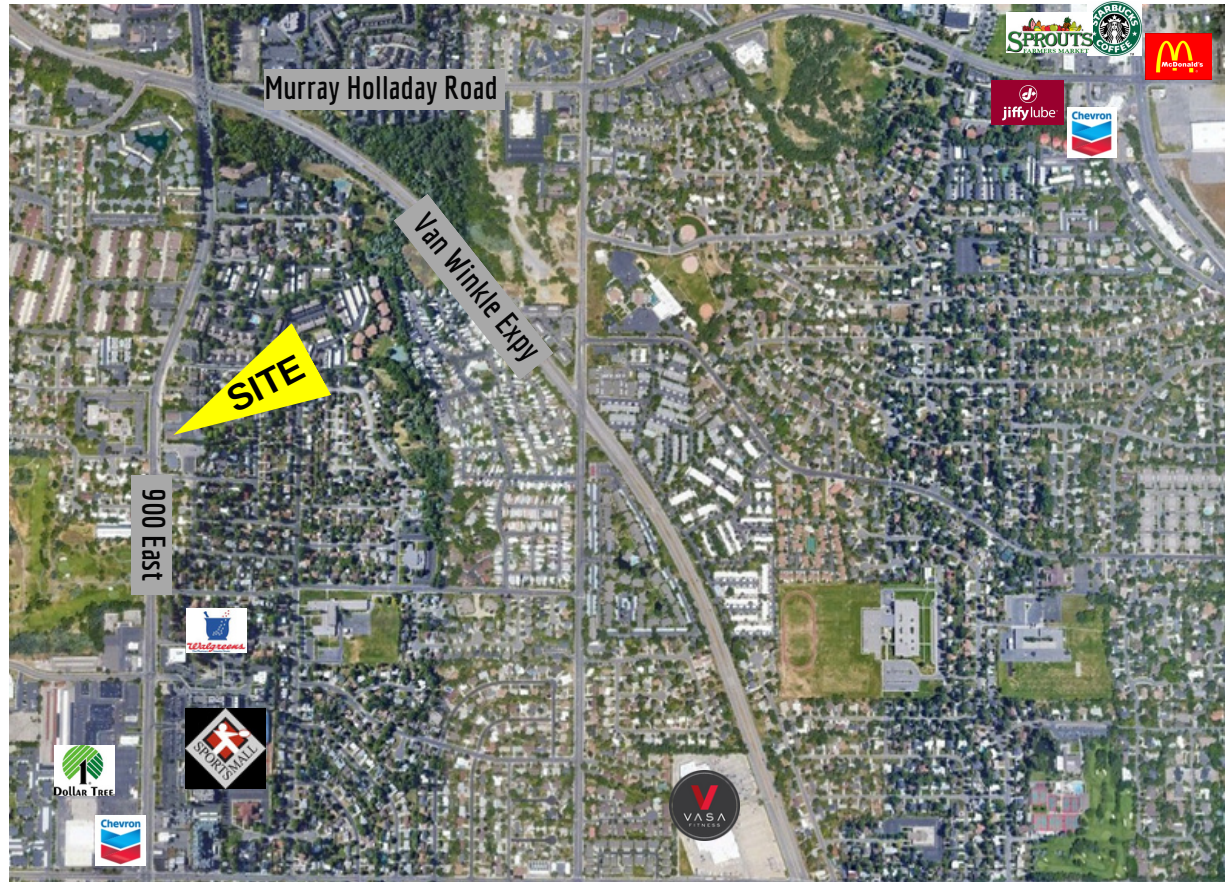
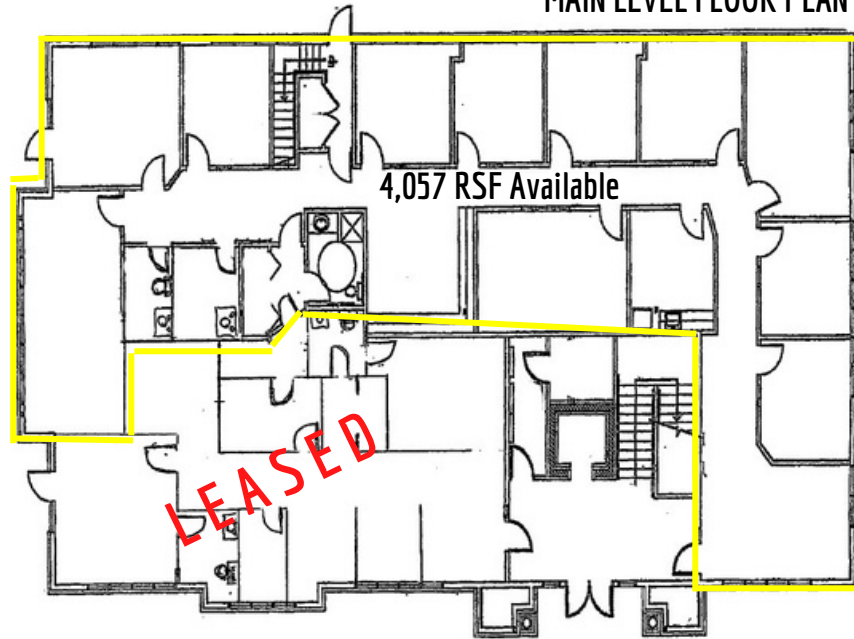
900 East : 35,351 Annual Average Daily Traffic  
Van Winkle Expy : 46,444 Annual Average Daily Traffic

**KELLEN KONCAR**      **801.617.1700**  
**kellen.koncar@crcnationwide.com**

# MURRAY OFFICE SUITE AVAILABLE FOR LEASE

5107 South 900 East, Murray, UT 84117

MAIN LEVEL FLOOR PLAN



This information is given with the understanding that all negotiations and/or real estate activity related to the property described above shall be conducted through this cRc Nationwide office. The above information while not guaranteed, was obtained from sources we believe to be reliable.