

WESLEY CHAPEL COMMERCIAL LAND

For Sale

6161-6202 Wesley Grove Blvd, Wesley Chapel FL. 33544



Call For Pricing

CPR TEAM OFFICE (727) 822.4715

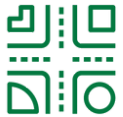
Jim Engelmann, Sales Associate |

Jim@CPRTeam.com | (813) 508-4981 (Mobile)

Property Details



One of the fastest growing communities in Florida.



Convenient to the I-75 off ramp.



I-75 visibility.



Proximity to tourist attractions and sports complexes.

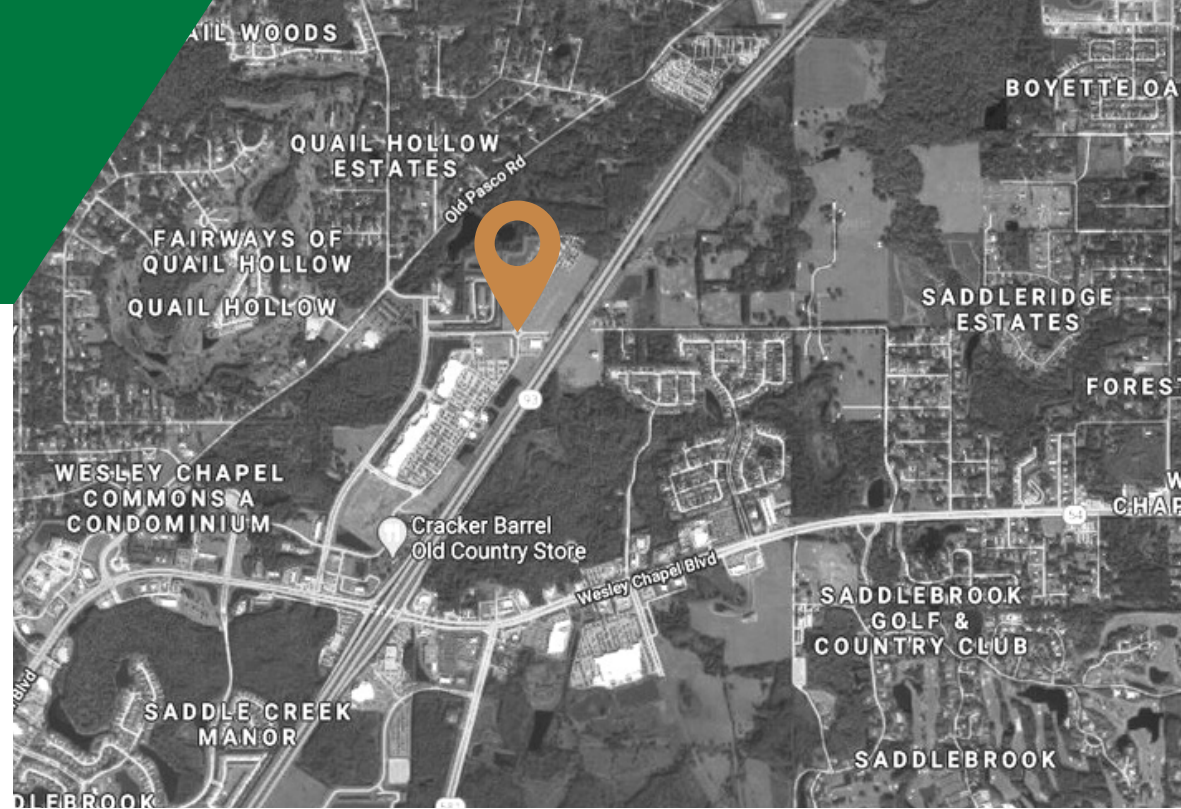


Variety of uses possible – Restaurant, Retail, Commercial.



Thousands of new homes recently built or under development.

Call Jim to discuss pricing and uses.



Property Description



1.5 to 3 Acres inside The Grove Shopping Center.

The Grove Shopping Center is the hottest property in the Wesley Chapel market! The opportunity is to purchase from 1.5 to 3 acres (MOL) of land directly adjacent to the Movie Theater, Mini-golf and Chuck E. Cheese. Commercial zoning and entitlements are available for most any commercial use – furniture store, restaurant and stand-alone retail.

New additions to The Grove include a Planet Fitness, Bealls and Five Below. Target will be opening at the entrance to the shopping center, creating additional traffic. The most recently opened attraction is Krate, a container park that is packed with 46 restaurants and retail shops, along with a stage for live entertainment.



This property is perfectly positioned to take advantage of the proximity to this family destination, as well as the new Wesley Chapel Sports Complex, Advent Health Ice Arena, The Performing Arts Center as well as the thousands of new residential rooftops recently added or currently under development in the immediate area.

Wesley Chapel is one of the fastest growing communities in Florida, and The Grove Shopping Center is in the middle of this dynamic growth.

MEET THE AGENT

6161-6202 Wesley Grove Blvd for Sale

COMMERCIAL
PARTNERS
REALTY

CPRTEAM.COM



JIM ENGELMANN

Jim is the Land/Office/Investment Specialist for CPR. Also known as Mr. Pasco, many of his clients' successes have been a direct result of the ever-growing network of people that Jim has come to know and that like to close deals with him.

[CONTACT JIM](#)

C: (813).508.4981 | W:(727).822.4715
Jim@cprteam.com | www.CPRTeam.com



COMMERCIAL PARTNERS REALTY
OFFICE.INDUSTRIAL.LAND.RETAIL.INVESTMENT