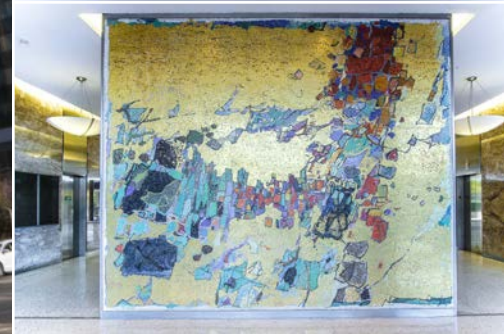




FOR LEASE

421,768 SF Class A Office Building

3600 WILSHIRE BOULEVARD, LOS ANGELES, CA 90010



New Spec Suites Available

JOHN ANTHONY, SIOR
213.225.7218
john.anthony@kidder.com
LIC N° 01226464

CHRISTOPHER STECK
213.225.7231
christopher.steck@kidder.com
LIC N° 01841338

CHRISTOPHER GIORDANO
213.225.7219
christopher.giordano@kidder.com
LIC N° 01928706

PHILLIP TAGGART
213.225.7237
phil.taggart@kidder.com
LIC N° 02149291

**Kidder
Mathews**

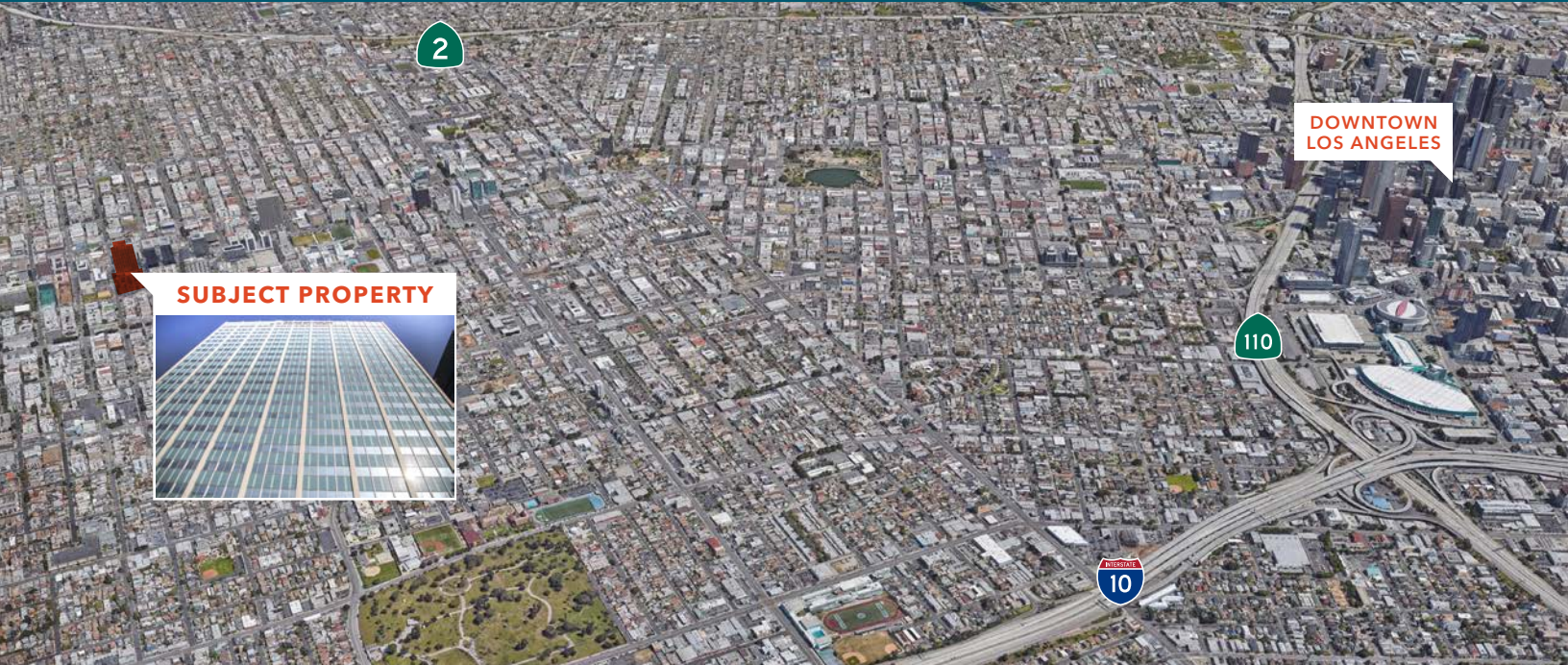
This information supplied herein is from sources we deem reliable. It is provided without any representation, warranty, or guarantee, expressed or implied as to its accuracy. Prospective Buyer or Tenant should conduct an independent investigation and verification of all matters deemed to be material, including, but not limited to, statements of income and expenses. Consult your attorney, accountant, or other professional advisor.

**TEAM-ASG.COM
KIDDER.COM**

FOR LEASE

3600 Wilshire Boulevard

LOS ANGELES, CA 90010



PRICE \$2.70/SF - \$2.90/SF full service gross

SPEC suites available

FEATURES 22 story, 4-star, Class A office

FANTASTIC 360° view of Downtown & Hollywood

UP TO A 17,212 SF (full floor) available to lease

PARKING RATES Upper Parking: \$130-\$190
Lower Parking: \$145-\$200

ENTRANCE has an 88 foot wide forecourt framed by one story wings

LOBBY features a four-section colored mosaic glass mural by Gyorgy Kepes, 12 feet high & totaling 57 feet in length

EXTERIOR signage available

JOHN ANTHONY, SIOR

213.225.7218

john.anthony@kidder.com

LIC N° 01226464

CHRISTOPHER STECK

213.225.7231

christopher.steck@kidder.com

LIC N° 01841338

CHRISTOPHER GIORDANO

213.225.7219

christopher.giordano@kidder.com

LIC N° 01928706

PHILLIP TAGGART

213.225.7237

phil.taggart@kidder.com

LIC N° 02149291

TEAM-ASG.COM | KIDDER.COM

This information supplied herein is from sources we deem reliable. It is provided without any representation, warranty, or guarantee, expressed or implied as to its accuracy. Prospective Buyer or Tenant should conduct an independent investigation and verification of all matters deemed to be material, including, but not limited to, statements of income and expenses. Consult your attorney, accountant, or other professional advisor.



FOR LEASE

3600 Wilshire Boulevard

LOS ANGELES, CA 90010

Available Suites

Suite	RSF	Description
100E	578	South facing; open space
100H	1,541	South facing; interior office, storage room & show room
100P	890	North facing; interior office & show room
200	6,151	Northwest facing view; includes a reception area, 14 offices, conference room & kitchen
224	883	East facing; includes open area and 1 office
310	4,381	North facing; includes 7 offices, 2 storage rooms and open area
328	600	South facing; includes 1 office, kitchen and storage room
400 & 406	7,033	Northwest corner suite; includes 22 offices, 2 conference rooms, open area and kitchen
426	5,540	Northeast corner suite; includes 13 offices, 2 conference rooms, open area & 2 storage room
500	20,109	Full floor availability
702	2,000	Southwest corner suite; includes 6 offices, 1 conference room and reception area
704	1,615	West facing; includes 4 offices and open area (suite is long and narrow)
706	1,629	West facing; includes 4 offices and open area (suite is long and narrow)
720	1,809	Northeast corner suite; includes 5 offices, 1 conference room, kitchen and reception area
810	869	North facing; includes 1 office and 1 storage
820	2,789	Northeast corner suite; includes 7 offices, 1 conference room, kitchen and reception area
832	1,117	South facing; includes 3 offices and 1 storage
834	3,415	Southwest corner suite; includes 8 offices, kitchen, reception area and open area
926	3,710	Southeast corner suite; includes 7 offices, 1 conference room, kitchen, reception area and open area
928	735	South facing; includes 2 offices and open area
1008	3,080	Northwest corner suite; includes 6 offices, 1 conference room, kitchen, and reception area
1014	1,511	North facing; includes 4 offices, storage room and open area
1016	1,044	North facing; includes 2 offices and open area
1020	2,642	Northeast corner suite; includes 6 offices, storage room, kitchen and open area
1030	1,498	South facing; includes 4 offices and open area
1032	1,134	South facing; includes 2 offices and open area
1034	843	South facing; includes 2 offices, kitchen and open area
1100	2,890	Northwest corner suite; includes 4 offices, 1 conference room, reception area, storage room, kitchen, and open area

JOHN ANTHONY, SIOR

213.225.7218

john.anthony@kidder.com

LIC N° 01226464

CHRISTOPHER STECK

213.225.7231

christopher.steck@kidder.com

LIC N° 01841338

CHRISTOPHER GIORDANO

213.225.7219

christopher.giordano@kidder.com

LIC N° 01928706

PHILLIP TAGGART

213.225.7237

phil.taggart@kidder.com

LIC N° 02149291

TEAM-ASG.COM | KIDDER.COM

This information supplied herein is from sources we deem reliable. It is provided without any representation, warranty, or guarantee, expressed or implied as to its accuracy. Prospective Buyer or Tenant should conduct an independent investigation and verification of all matters deemed to be material, including, but not limited to, statements of income and expenses. Consult your attorney, accountant, or other professional advisor.



FOR LEASE

3600 Wilshire Boulevard

LOS ANGELES, CA 90010

Suite	RSF	Description
1120	3,992	Northeast corner suite; includes 6 offices, storage room, and open area
1126	1,135	Southeast corner suite; includes 3 offices and open area
1130	1,935	South facing; includes 5 offices, kitchen and open area
1140	1,423	West facing; includes 2 offices and open area (suite is long and narrow)
1200	3,914	Southwest corner suite; includes 8 offices, conference room, kitchen, reception area and open area
1210	3,170	North facing; includes 7 offices, 1 conference room, kitchen and open area
1226	2,124	Southeast corner suite; includes 3 offices, reception area and open area
1400	748	South facing; includes 1 office and open area
1407	1,391	West facing; includes 2 offices, 1 conference room and open area
1408	1,610	Northwest corner suite; includes 4 offices, kitchen and open area
1420	2,933	Northwest corner suite; includes 4 offices, conference room, kitchen, reception area and open area
1424/1426	2,901	Southeast corner suite; includes 5 offices, storage room and open area
1602	1,618	South facing; includes 5 offices,,reception area, and open area
1605	4,017	Southwest corner suite; includes 6 offices, conference room, kitchen, reception area, and open area
1608	2,952	Northwest corner suite; includes 6 offices, 1 conference room and open area
1620	4,542	Northeast corner suite; includes 10 offices, 1 conference room, reception area and open area
1630	1,626	Southwest corner; includes 4 offices, 1 conference room and open area
1640	802	South facing; includes 2 offices and open area
1700	3,884	Southwest corner suite; includes 1 office, conference room, studio, kitchen, and open area
1704	915	Interior office space (no window); includes 2 offices and open area
1714	1,723	North facing suite; includes 5 offices, kitchen and reception area
1734	948	South facing; includes 2 office, storage room and open area
1820-1830	2,147	East facing; White box
1830	2,533	Southeast facing; White box
1902	2,907	Southeast corner suite; Black
1906	500	South facing, open area
1918	1,046	North facing suite; includes 3 offices, kitchen and open area
1920	2,856	Northeast corner suite; includes 6 office, 1 conference room, kitchen, reception area and open area
2000	3,054	North facing; includes 7 office, 2 studios, reception area, kitchen, and open area
2020	1,550	Northeast corner suite; includes 3 office, 1 conference room, reception area and open area

JOHN ANTHONY, SIOR

213.225.7218

john.anthony@kidder.com

LIC N° 01226464

CHRISTOPHER STECK

213.225.7231

christopher.steck@kidder.com

LIC N° 01841338

CHRISTOPHER GIORDANO

213.225.7219

christopher.giordano@kidder.com

LIC N° 01928706

PHILLIP TAGGART

213.225.7237

phil.taggart@kidder.com

LIC N° 02149291

TEAM-ASG.COM | KIDDER.COM

This information supplied herein is from sources we deem reliable. It is provided without any representation, warranty, or guarantee, expressed or implied as to its accuracy. Prospective Buyer or Tenant should conduct an independent investigation and verification of all matters deemed to be material, including, but not limited to, statements of income and expenses. Consult your attorney, accountant, or other professional advisor.

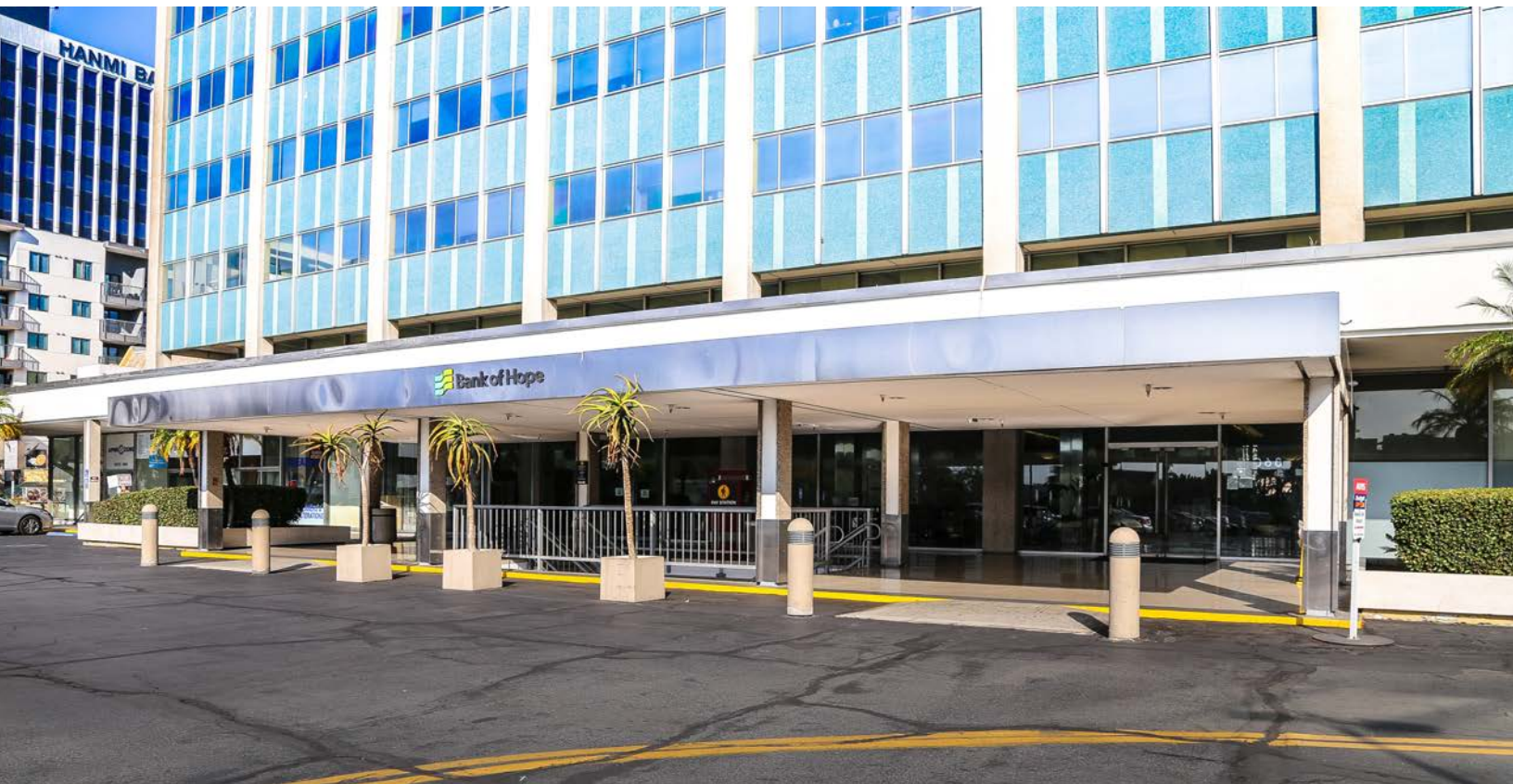


FOR LEASE

3600 Wilshire Boulevard

LOS ANGELES, CA 90010

Suite	RSF	Description
2022 & 2024	1,366	East facing; includes 2 offices and kitchen
2035	1,115	south facing; includes 4 offices, storage room, and open area
2036	3,424	Southwest corner suite; includes 7 offices, 1 conference room, kitchen, reception area and open area
2038	576	south facing; includes 1 office and open area
2120	2,962	Northeast corner suite
2208	1,665	West facing; includes 7 offices and kitchen (suite is long and narrow)
2212	1,126	North facing; includes 4 offices and open area
2228	1,335	South facing; includes 2 offices, 1 conference room, and reception area
2230	2,249	South facing; includes 5 offices, 1 conference room, storage room and open area



JOHN ANTHONY, Sior

213.225.7218

john.anthony@kidder.com

LIC N° 01226464

CHRISTOPHER STECK

213.225.7231

christopher.steck@kidder.com

LIC N° 01841338

CHRISTOPHER GIORDANO

213.225.7219

christopher.giordano@kidder.com

LIC N° 01928706

PHILLIP TAGGART

213.225.7237

phil.taggart@kidder.com

LIC N° 02149291

TEAM-ASG.COM | KIDDER.COM

This information supplied herein is from sources we deem reliable. It is provided without any representation, warranty, or guarantee, expressed or implied as to its accuracy. Prospective Buyer or Tenant should conduct an independent investigation and verification of all matters deemed to be material, including, but not limited to, statements of income and expenses. Consult your attorney, accountant, or other professional advisor.



FOR LEASE

3600 Wilshire Boulevard

LOS ANGELES, CA 90010



JOHN ANTHONY, SIOR

213.225.7218

john.anthony@kidder.com

LIC N° 01226464

CHRISTOPHER STECK

213.225.7231

christopher.steck@kidder.com

LIC N° 01841338

CHRISTOPHER GIORDANO

213.225.7219

christopher.giordano@kidder.com

LIC N° 01928706

PHILLIP TAGGART

213.225.7237

phil.taggart@kidder.com

LIC N° 02149291

TEAM-ASG.COM | KIDDER.COM

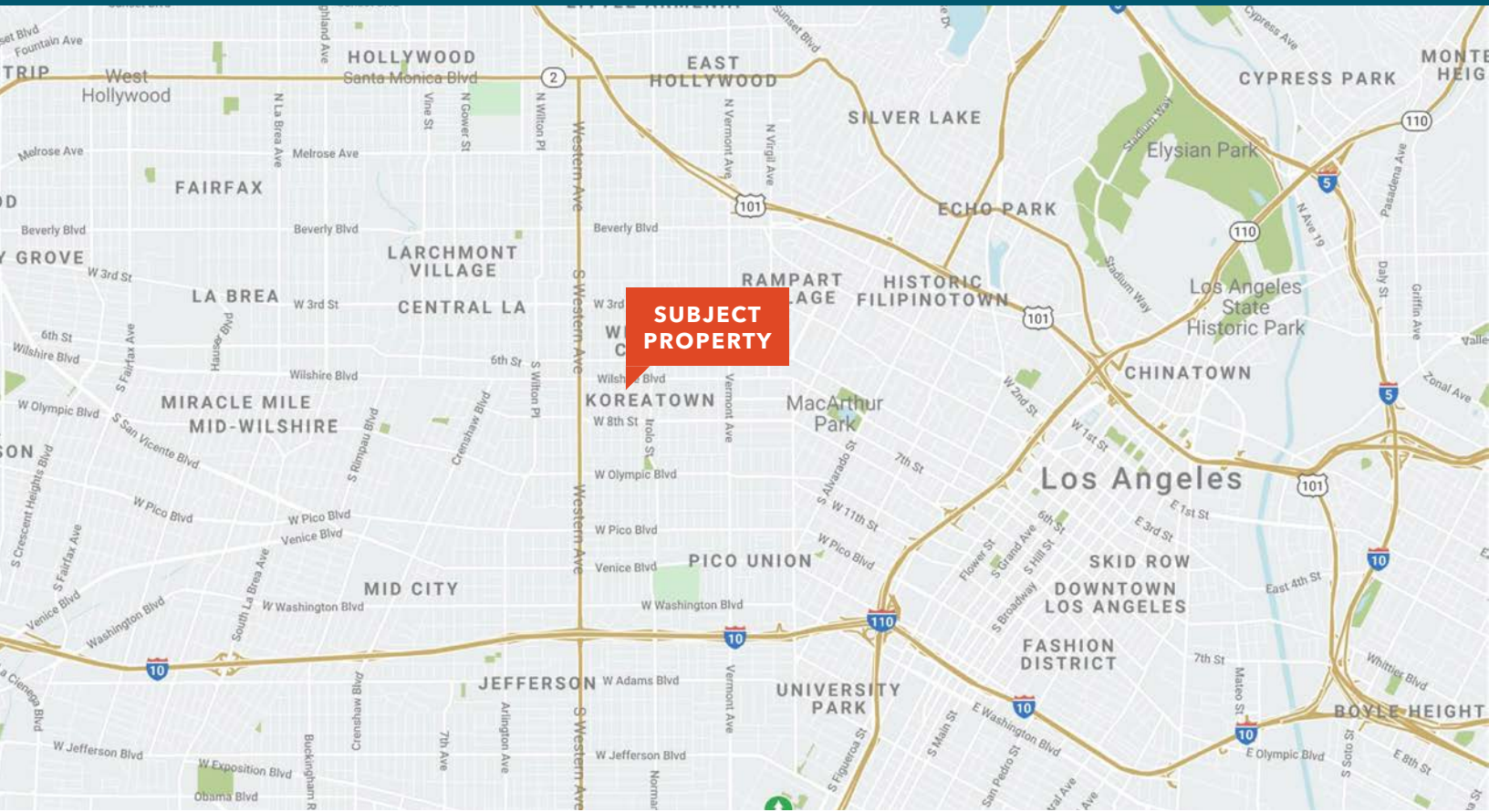
This information supplied herein is from sources we deem reliable. It is provided without any representation, warranty, or guarantee, expressed or implied as to its accuracy. Prospective Buyer or Tenant should conduct an independent investigation and verification of all matters deemed to be material, including, but not limited to, statements of income and expenses. Consult your attorney, accountant, or other professional advisor.



FOR LEASE

3600 Wilshire Boulevard

LOS ANGELES, CA 90010



The building is centrally-located between DTLA & the Westside

Only 1.5 miles from the Santa Monica Freeway. All area amenities are within walking distance. There is high-speed internet provided by Everest Broadband.



**PRIME LA LOCATION
NEAR PARK MILE,
MIRACLE MILE AND
KOREATOWN**



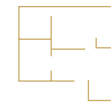
**PICTURESQUE
SUITE VIEWS OF
BEVERLY HILLS AND
HOLLYWOOD**



**NEAR METRO
LINES AND PUBLIC
TRANSPORTATION**



**CLOSE TO AN
ABUNDANCE OF RETAIL
STORES, HOTELS, AND
RESTAURANTS**



**VARIOUS FLOOR PLANS
TO CHOOSE FROM
110 SF TO 17,212 SF
AVAILABLE**



**71 WALK SCORE,
66 TRANSIT SCORE**

JOHN ANTHONY, SIOR

213.225.7218

john.anthony@kiddier.com

LIC N° 01226464

CHRISTOPHER STECK

213.225.7231

christopher.steck@kiddier.com

LIC N° 01841338

CHRISTOPHER GIORDANO

213.225.7219

christopher.giordano@kiddier.com

LIC N° 01928706

PHILLIP TAGGART

213.225.7237

phil.taggart@kiddier.com

LIC N° 02149291

TEAM-ASG.COM | KIDDER.COM

This information supplied herein is from sources we deem reliable. It is provided without any representation, warranty, or guarantee, expressed or implied as to its accuracy. Prospective Buyer or Tenant should conduct an independent investigation and verification of all matters deemed to be material, including, but not limited to, statements of income and expenses. Consult your attorney, accountant, or other professional advisor.

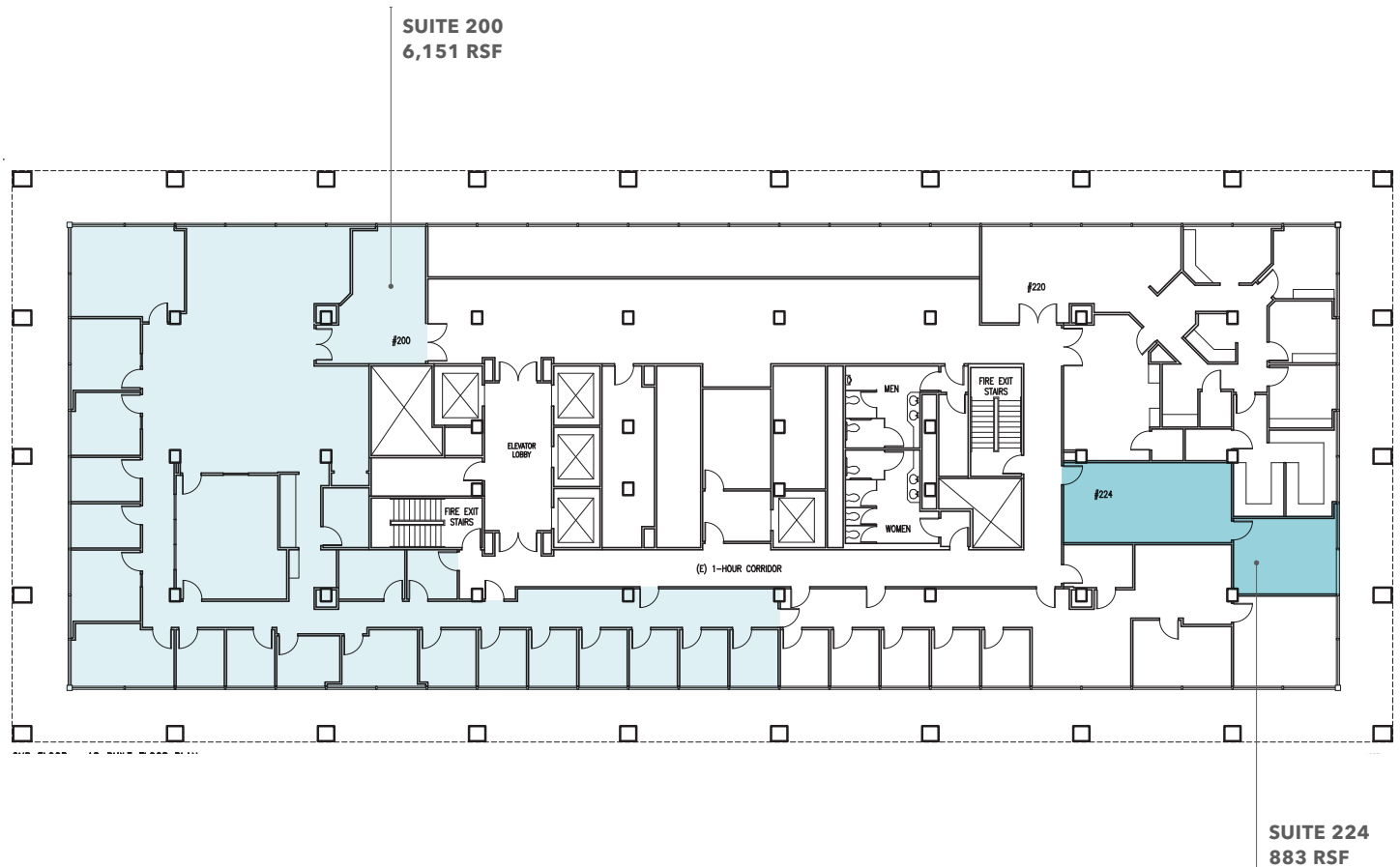


FOR LEASE

3600 Wilshire Boulevard

LOS ANGELES, CA 90010

2nd Floor



JOHN ANTHONY, SIOR

213.225.7218

john.anthony@kidder.com

LIC N° 01226464

CHRISTOPHER STECK

213.225.7231

christopher.steck@kidder.com

LIC N° 01841338

CHRISTOPHER GIORDANO

213.225.7219

christopher.giordano@kidder.com

LIC N° 01928706

PHILLIP TAGGART

213.225.7237

phil.taggart@kidder.com

LIC N° 02149291

TEAM-ASG.COM | KIDDER.COM

This information supplied herein is from sources we deem reliable. It is provided without any representation, warranty, or guarantee, expressed or implied as to its accuracy. Prospective Buyer or Tenant should conduct an independent investigation and verification of all matters deemed to be material, including, but not limited to, statements of income and expenses. Consult your attorney, accountant, or other professional advisor.

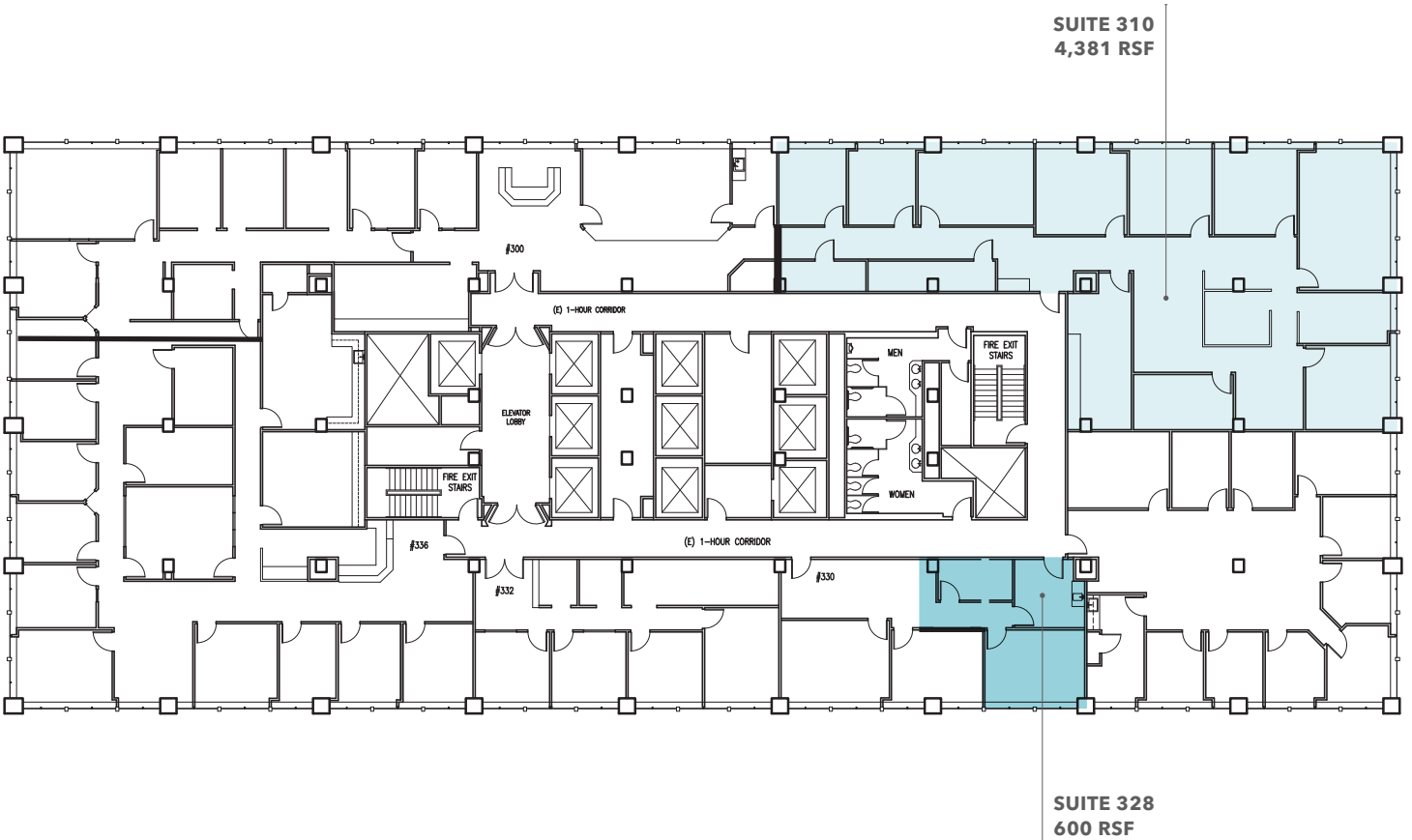


FOR LEASE

3600 Wilshire Boulevard

LOS ANGELES, CA 90010

3rd Floor



JOHN ANTHONY, SIOR

213.225.7218

john.anthony@kidder.com

LIC N° 01226464

CHRISTOPHER STECK

213.225.7231

christopher.steck@kidder.com

LIC N° 01841338

CHRISTOPHER GIORDANO

213.225.7219

christopher.giordano@kidder.com

LIC N° 01928706

PHILLIP TAGGART

213.225.7237

phil.taggart@kidder.com

LIC N° 02149291

TEAM-ASG.COM | KIDDER.COM

This information supplied herein is from sources we deem reliable. It is provided without any representation, warranty, or guarantee, expressed or implied as to its accuracy. Prospective Buyer or Tenant should conduct an independent investigation and verification of all matters deemed to be material, including, but not limited to, statements of income and expenses. Consult your attorney, accountant, or other professional advisor.

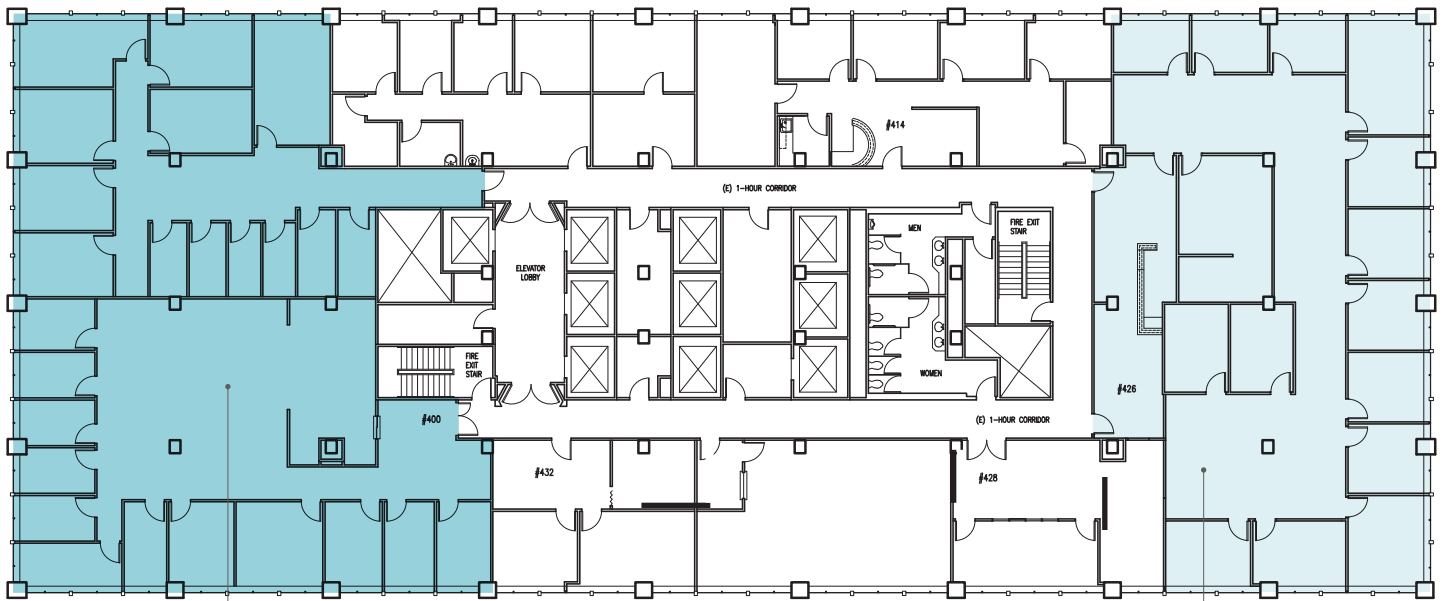


FOR LEASE

3600 Wilshire Boulevard

LOS ANGELES, CA 90010

4th Floor



SUITE 400 & 406
7,033 RSF

SUITE 426
5,540 RSF

JOHN ANTHONY, SIOR

213.225.7218

john.anthony@kidder.com

LIC N° 01226464

CHRISTOPHER STECK

213.225.7231

christopher.steck@kidder.com

LIC N° 01841338

CHRISTOPHER GIORDANO

213.225.7219

christopher.giordano@kidder.com

LIC N° 01928706

PHILLIP TAGGART

213.225.7237

phil.taggart@kidder.com

LIC N° 02149291

TEAM-ASG.COM | KIDDER.COM

This information supplied herein is from sources we deem reliable. It is provided without any representation, warranty, or guarantee, expressed or implied as to its accuracy. Prospective Buyer or Tenant should conduct an independent investigation and verification of all matters deemed to be material, including, but not limited to, statements of income and expenses. Consult your attorney, accountant, or other professional advisor.



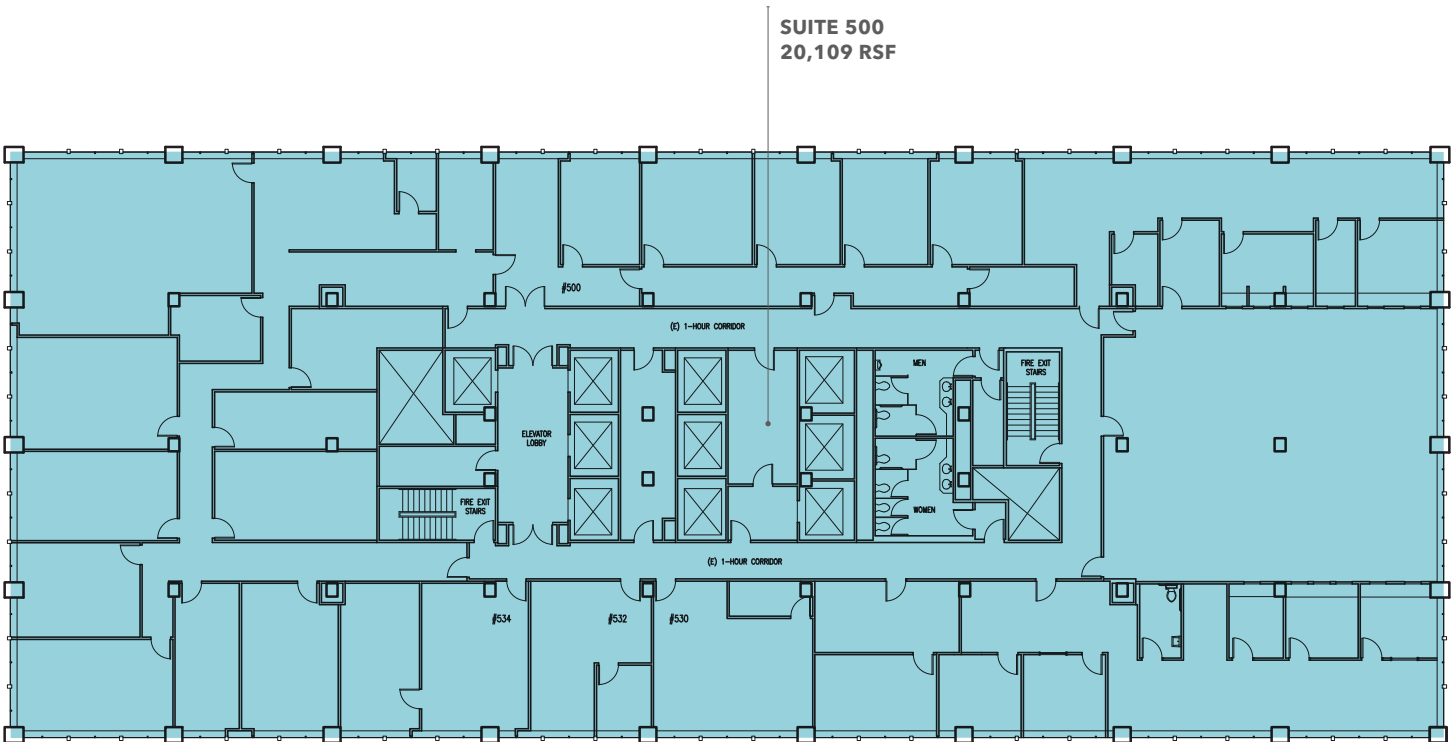
FOR LEASE

3600 Wilshire Boulevard

LOS ANGELES, CA 90010

5th Floor

SUITE 500
20,109 RSF



JOHN ANTHONY, SIOR

213.225.7218

john.anthony@kidder.com

LIC N° 01226464

CHRISTOPHER STECK

213.225.7231

christopher.steck@kidder.com

LIC N° 01841338

CHRISTOPHER GIORDANO

213.225.7219

christopher.giordano@kidder.com

LIC N° 01928706

PHILLIP TAGGART

213.225.7237

phil.taggart@kidder.com

LIC N° 02149291

TEAM-ASG.COM | KIDDER.COM

This information supplied herein is from sources we deem reliable. It is provided without any representation, warranty, or guarantee, expressed or implied as to its accuracy. Prospective Buyer or Tenant should conduct an independent investigation and verification of all matters deemed to be material, including, but not limited to, statements of income and expenses. Consult your attorney, accountant, or other professional advisor.

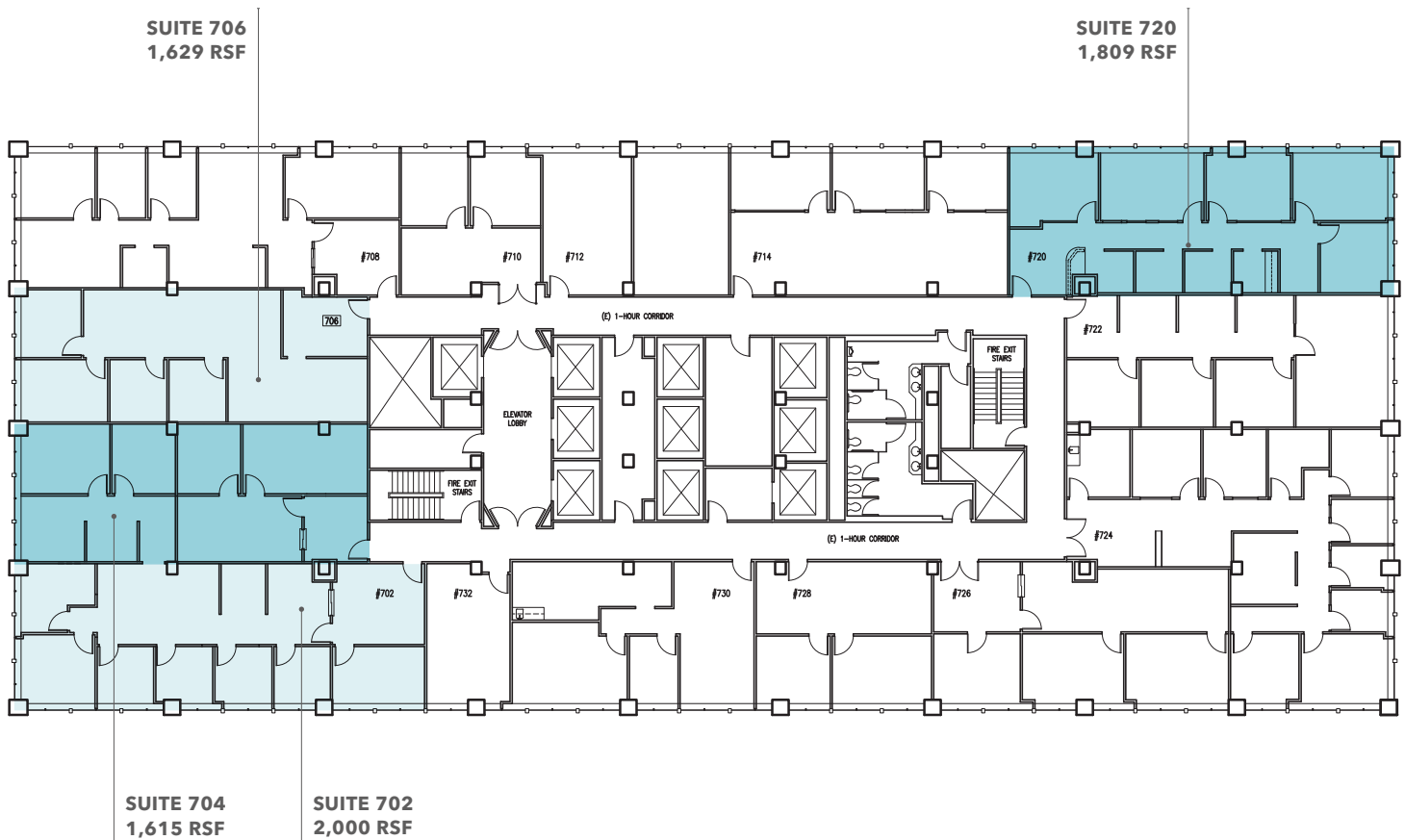


FOR LEASE

3600 Wilshire Boulevard

LOS ANGELES, CA 90010

7th Floor



JOHN ANTHONY, SIOR

213.225.7218

john.anthony@kidder.com

LIC N° 01226464

CHRISTOPHER STECK

213.225.7231

christopher.steck@kidder.com

LIC N° 01841338

CHRISTOPHER GIORDANO

213.225.7219

christopher.giordano@kidder.com

LIC N° 01928706

PHILLIP TAGGART

213.225.7237

phil.taggart@kidder.com

LIC N° 02149291

TEAM-ASG.COM | KIDDER.COM

This information supplied herein is from sources we deem reliable. It is provided without any representation, warranty, or guarantee, expressed or implied as to its accuracy. Prospective Buyer or Tenant should conduct an independent investigation and verification of all matters deemed to be material, including, but not limited to, statements of income and expenses. Consult your attorney, accountant, or other professional advisor.

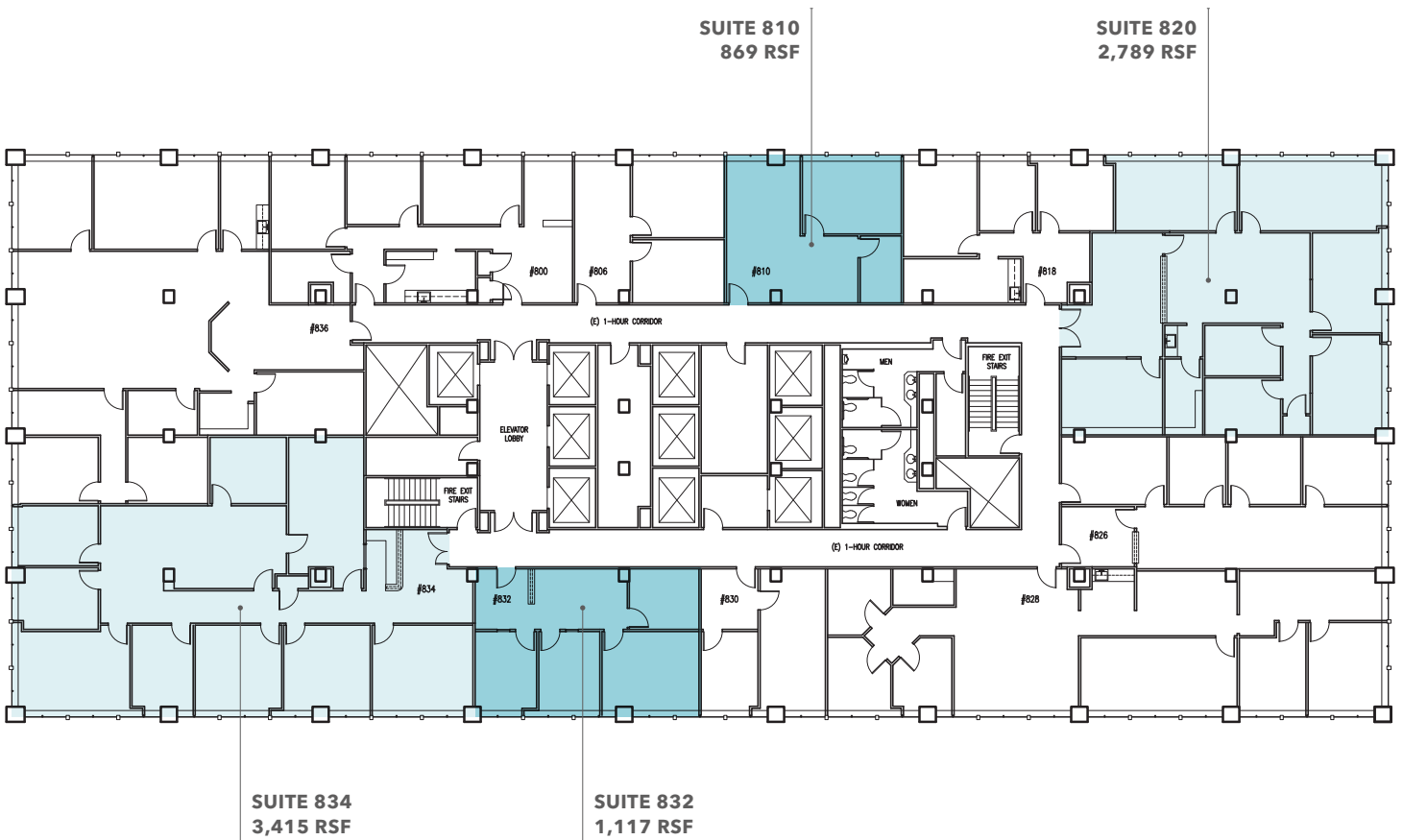


FOR LEASE

3600 Wilshire Boulevard

LOS ANGELES, CA 90010

8th Floor



JOHN ANTHONY, SIOR

213.225.7218

john.anthony@kidder.com

LIC N° 01226464

CHRISTOPHER STECK

213.225.7231

christopher.steck@kidder.com

LIC N° 01841338

CHRISTOPHER GIORDANO

213.225.7219

christopher.giordano@kidder.com

LIC N° 01928706

PHILLIP TAGGART

213.225.7237

phil.taggart@kidder.com

LIC N° 02149291

TEAM-ASG.COM | KIDDER.COM

This information supplied herein is from sources we deem reliable. It is provided without any representation, warranty, or guarantee, expressed or implied as to its accuracy. Prospective Buyer or Tenant should conduct an independent investigation and verification of all matters deemed to be material, including, but not limited to, statements of income and expenses. Consult your attorney, accountant, or other professional advisor.

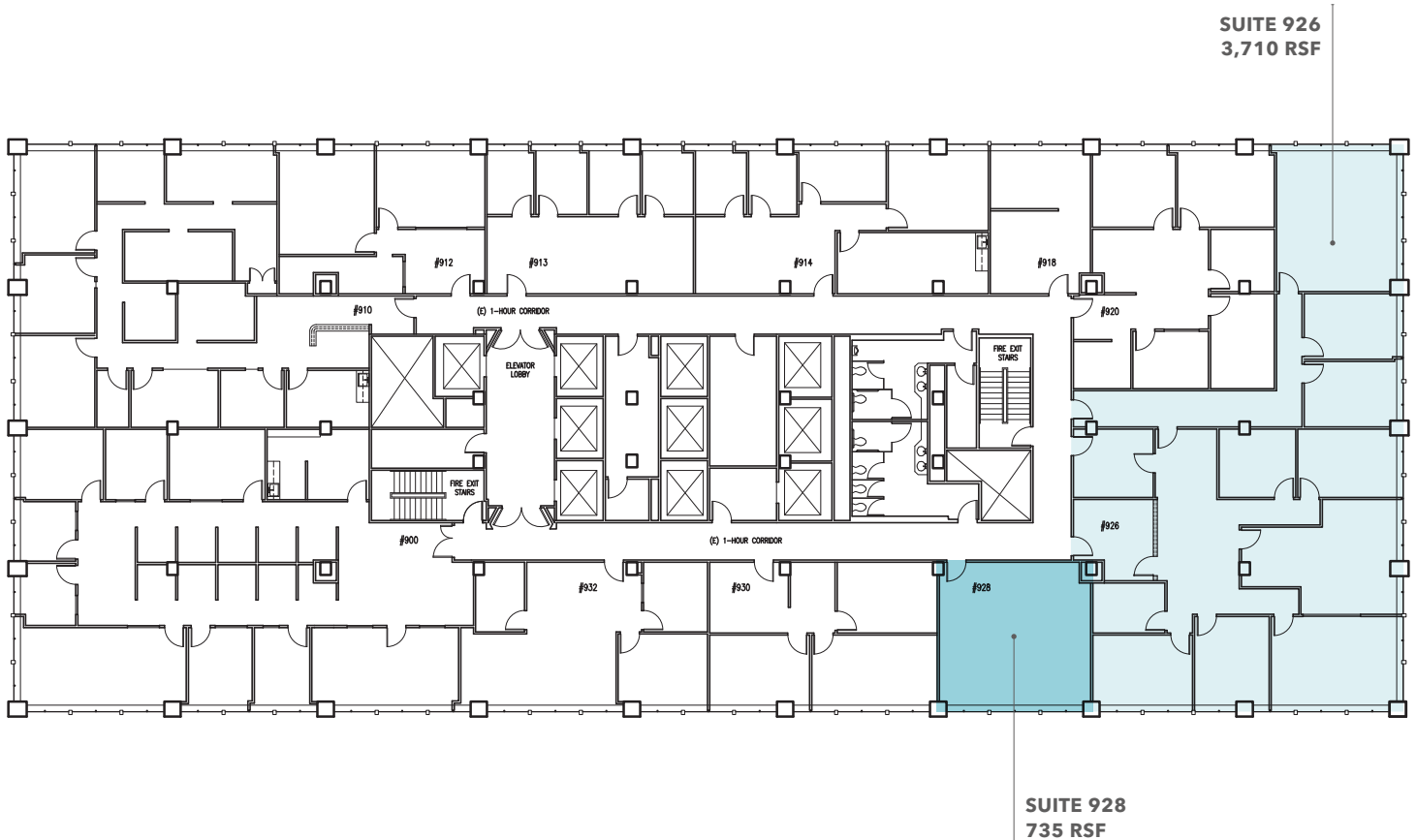


FOR LEASE

3600 Wilshire Boulevard

LOS ANGELES, CA 90010

9th Floor



JOHN ANTHONY, SIOR

213.225.7218

john.anthony@kidder.com

LIC N° 01226464

CHRISTOPHER STECK

213.225.7231

christopher.steck@kidder.com

LIC N° 01841338

CHRISTOPHER GIORDANO

213.225.7219

christopher.giordano@kidder.com

LIC N° 01928706

PHILLIP TAGGART

213.225.7237

phil.taggart@kidder.com

LIC N° 02149291

TEAM-ASG.COM | KIDDER.COM

This information supplied herein is from sources we deem reliable. It is provided without any representation, warranty, or guarantee, expressed or implied as to its accuracy. Prospective Buyer or Tenant should conduct an independent investigation and verification of all matters deemed to be material, including, but not limited to, statements of income and expenses. Consult your attorney, accountant, or other professional advisor.

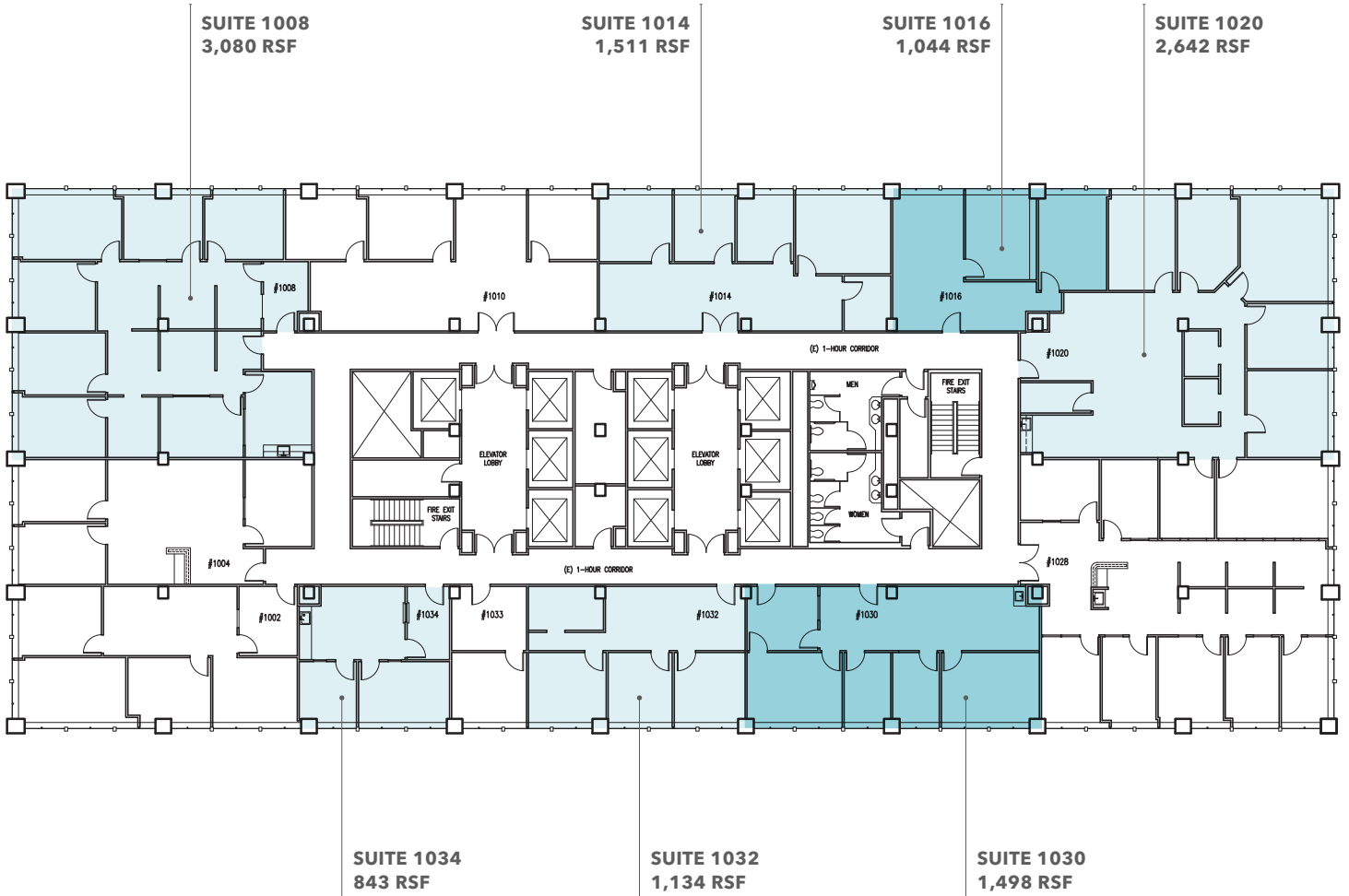


FOR LEASE

3600 Wilshire Boulevard

LOS ANGELES, CA 90010

10th Floor



JOHN ANTHONY, SIOR

213.225.7218

john.anthony@kidder.com

LIC N° 01226464

CHRISTOPHER STECK

213.225.7231

christopher.steck@kidder.com

LIC N° 01841338

CHRISTOPHER GIORDANO

213.225.7219

christopher.giordano@kidder.com

LIC N° 01928706

PHILLIP TAGGART

213.225.7237

phil.taggart@kidder.com

LIC N° 02149291

TEAM-ASG.COM | KIDDER.COM

This information supplied herein is from sources we deem reliable. It is provided without any representation, warranty, or guarantee, expressed or implied as to its accuracy. Prospective Buyer or Tenant should conduct an independent investigation and verification of all matters deemed to be material, including, but not limited to, statements of income and expenses. Consult your attorney, accountant, or other professional advisor.

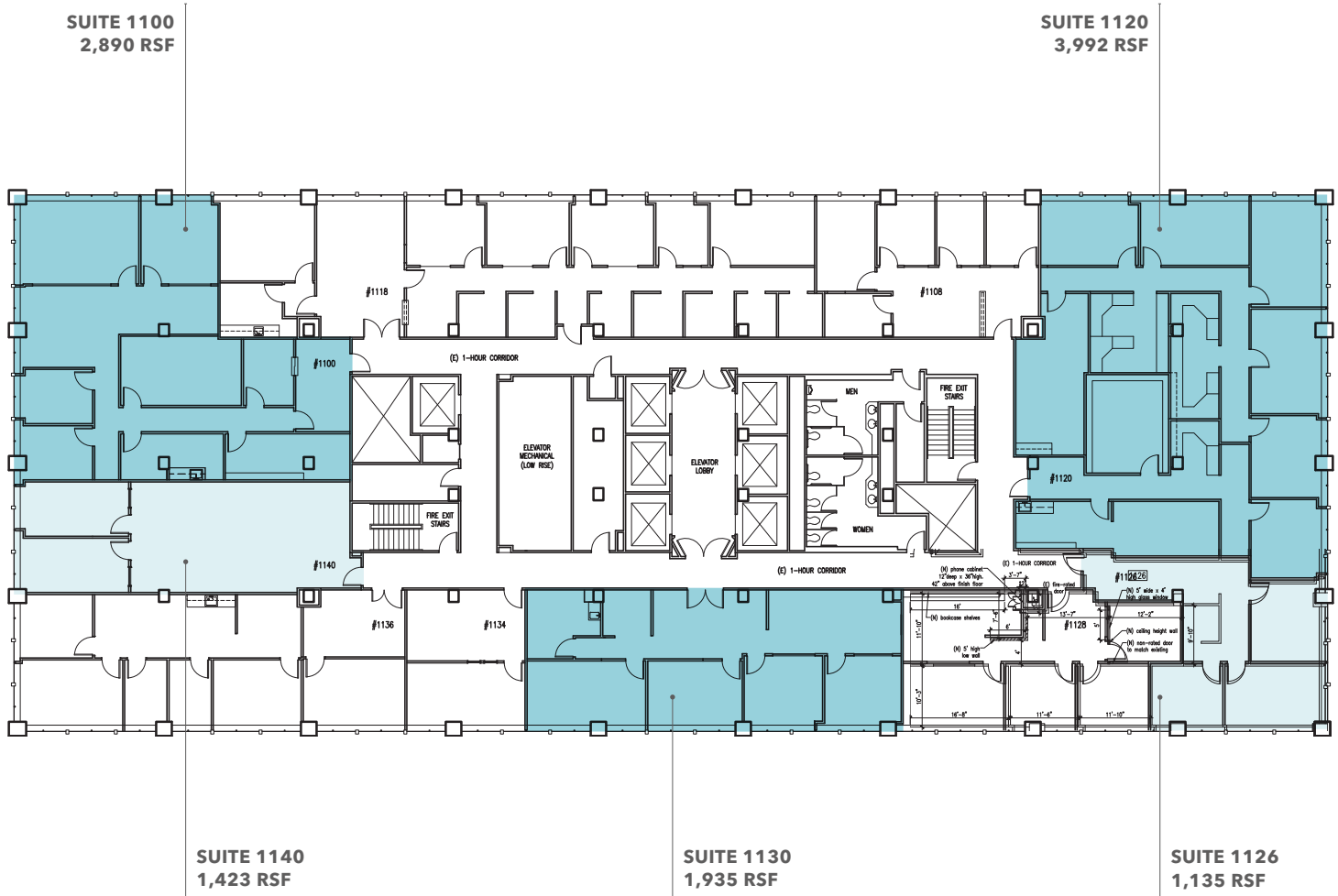


FOR LEASE

3600 Wilshire Boulevard

LOS ANGELES, CA 90010

11th Floor



JOHN ANTHONY, SIOR

213.225.7218

john.anthony@kidder.com

LIC N° 01226464

CHRISTOPHER STECK

213.225.7231

christopher.steck@kidder.com

LIC N° 01841338

CHRISTOPHER GIORDANO

213.225.7219

christopher.giordano@kidder.com

LIC N° 01928706

PHILLIP TAGGART

213.225.7237

phil.taggart@kidder.com

LIC N° 02149291

TEAM-ASG.COM | KIDDER.COM

This information supplied herein is from sources we deem reliable. It is provided without any representation, warranty, or guarantee, expressed or implied as to its accuracy. Prospective Buyer or Tenant should conduct an independent investigation and verification of all matters deemed to be material, including, but not limited to, statements of income and expenses. Consult your attorney, accountant, or other professional advisor.

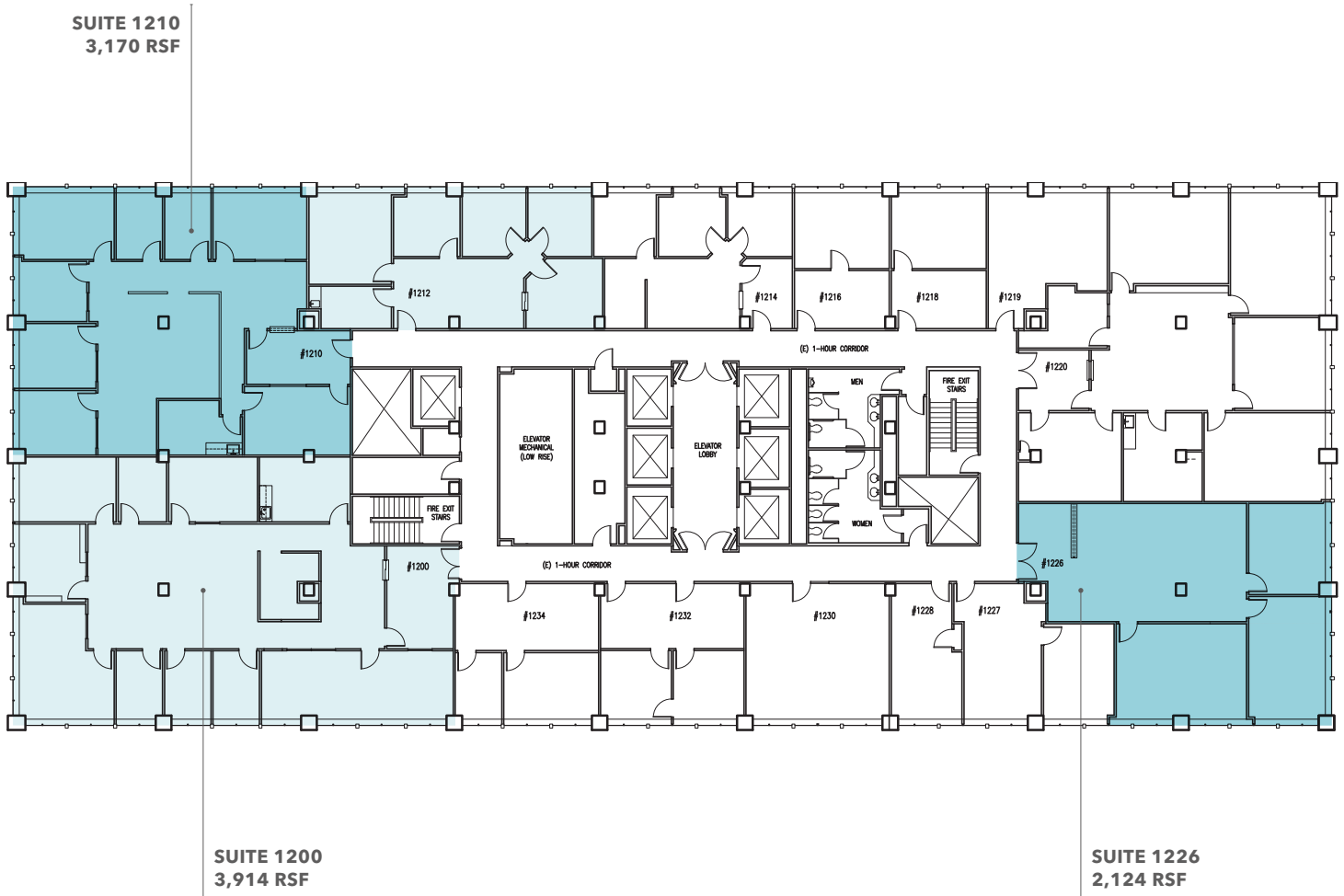


FOR LEASE

3600 Wilshire Boulevard

LOS ANGELES, CA 90010

12th Floor



JOHN ANTHONY, SIOR
213.225.7218
john.anthony@kiddler.com
LIC N° 01226464

CHRISTOPHER STECK
213.225.7231
christopher.steck@kiddler.com
LIC N° 01841338

CHRISTOPHER GIORDANO
213.225.7219
christopher.giordano@kiddler.com
LIC N° 01928706

PHILLIP TAGGART
213.225.7237
phil.taggart@kiddler.com
LIC N° 02149291

TEAM-ASG.COM | KIDDER.COM

This information supplied herein is from sources we deem reliable. It is provided without any representation, warranty, or guarantee, expressed or implied as to its accuracy. Prospective Buyer or Tenant should conduct an independent investigation and verification of all matters deemed to be material, including, but not limited to, statements of income and expenses. Consult your attorney, accountant, or other professional advisor.



FOR LEASE

3600 Wilshire Boulevard

LOS ANGELES, CA 90010

14th Floor



JOHN ANTHONY, SIOR

213.225.7218

john.anthony@kidder.com

LIC N° 01226464

CHRISTOPHER STECK

213.225.7231

christopher.steck@kidder.com

LIC N° 01841338

CHRISTOPHER GIORDANO

213.225.7219

christopher.giordano@kidder.com

LIC N° 01928706

PHILLIP TAGGART

213.225.7237

phil.taggart@kidder.com

LIC N° 02149291

TEAM-ASG.COM | KIDDER.COM

This information supplied herein is from sources we deem reliable. It is provided without any representation, warranty, or guarantee, expressed or implied as to its accuracy. Prospective Buyer or Tenant should conduct an independent investigation and verification of all matters deemed to be material, including, but not limited to, statements of income and expenses. Consult your attorney, accountant, or other professional advisor.

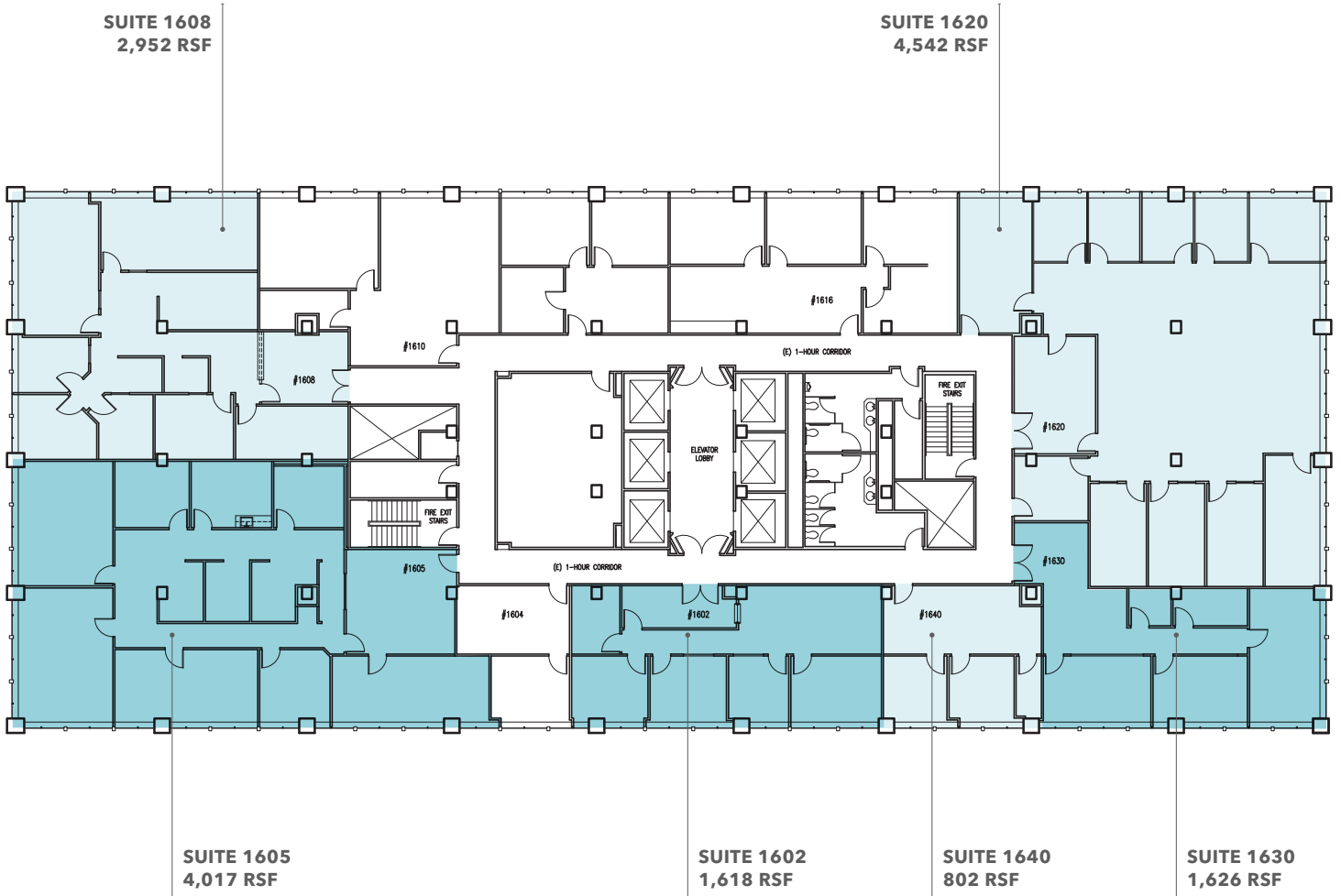


FOR LEASE

3600 Wilshire Boulevard

LOS ANGELES, CA 90010

16th Floor



JOHN ANTHONY, SIOR

213.225.7218

john.anthony@kiddier.com

LIC N° 01226464

CHRISTOPHER STECK

213.225.7231

christopher.steck@kiddier.com

LIC N° 01841338

CHRISTOPHER GIORDANO

213.225.7219

christopher.giordano@kiddier.com

LIC N° 01928706

PHILLIP TAGGART

213.225.7237

phil.taggart@kiddier.com

LIC N° 02149291

TEAM-ASG.COM | KIDDER.COM

This information supplied herein is from sources we deem reliable. It is provided without any representation, warranty, or guarantee, expressed or implied as to its accuracy. Prospective Buyer or Tenant should conduct an independent investigation and verification of all matters deemed to be material, including, but not limited to, statements of income and expenses. Consult your attorney, accountant, or other professional advisor.

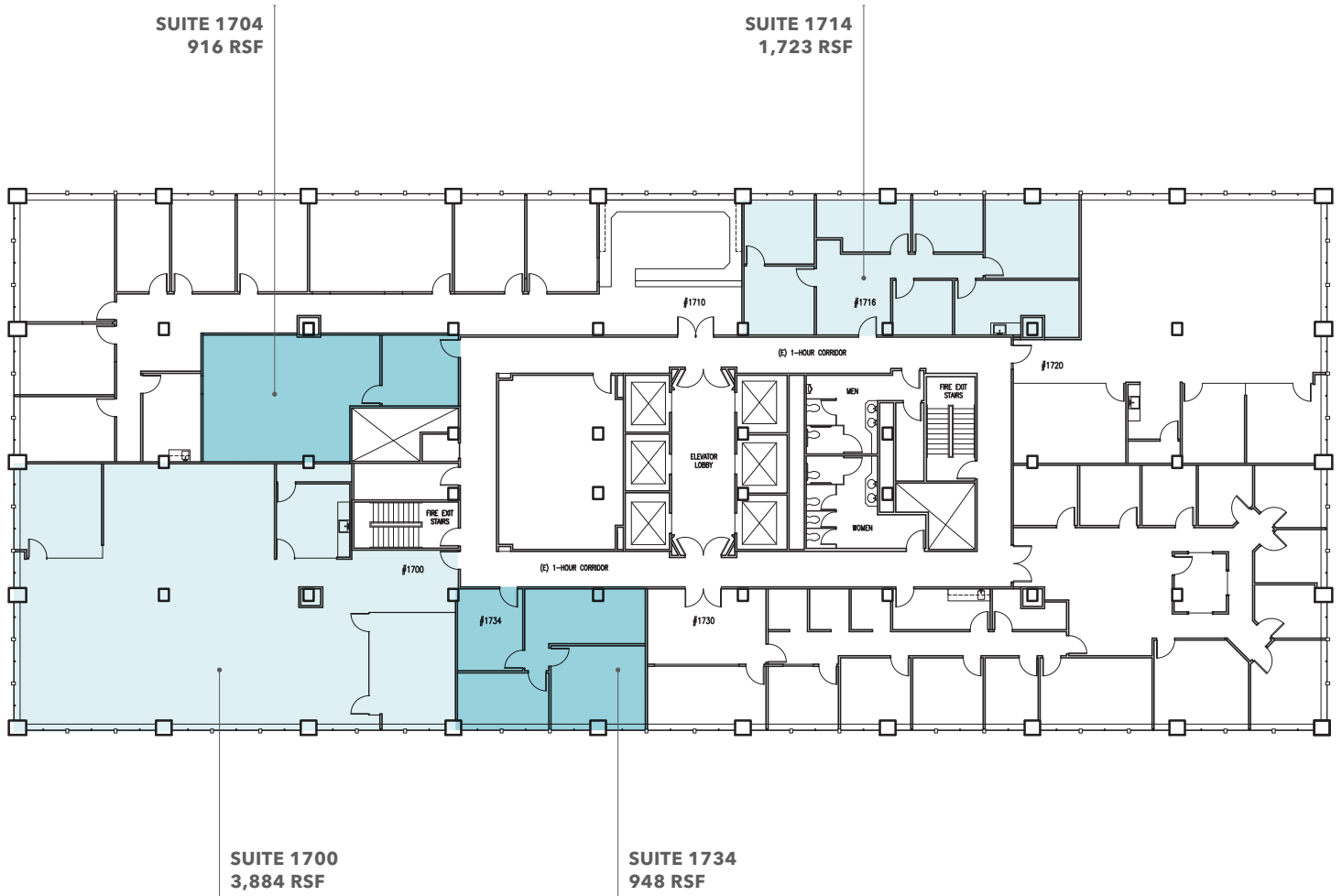


FOR LEASE

3600 Wilshire Boulevard

LOS ANGELES, CA 90010

17th Floor



JOHN ANTHONY, SIOR

213.225.7218

john.anthony@kiddler.com

LIC N° 01226464

CHRISTOPHER STECK

213.225.7231

christopher.steck@kiddler.com

LIC N° 01841338

CHRISTOPHER GIORDANO

213.225.7219

christopher.giordano@kiddler.com

LIC N° 01928706

PHILLIP TAGGART

213.225.7237

phil.taggart@kiddler.com

LIC N° 02149291

TEAM-ASG.COM | KIDDER.COM

This information supplied herein is from sources we deem reliable. It is provided without any representation, warranty, or guarantee, expressed or implied as to its accuracy. Prospective Buyer or Tenant should conduct an independent investigation and verification of all matters deemed to be material, including, but not limited to, statements of income and expenses. Consult your attorney, accountant, or other professional advisor.



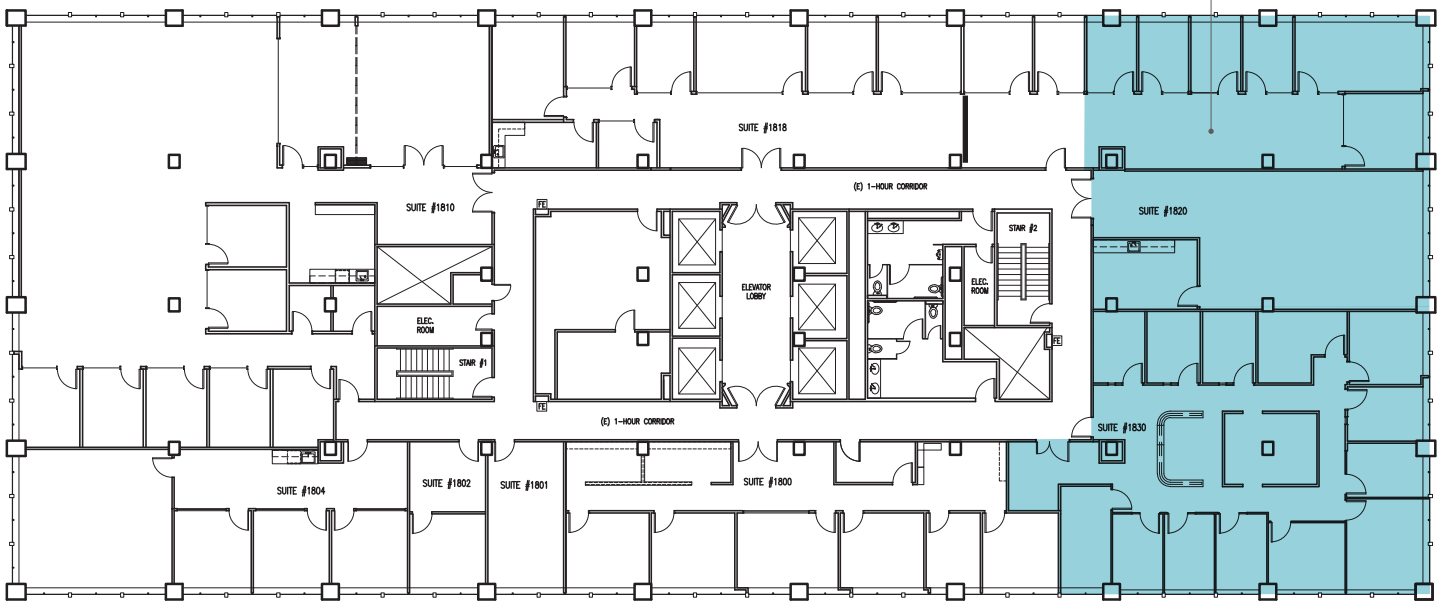
FOR LEASE

3600 Wilshire Boulevard

LOS ANGELES, CA 90010

18th Floor

SUITE 1820 & 1830
4,680 RSF



JOHN ANTHONY, SIOR

213.225.7218

john.anthony@kidder.com

LIC N° 01226464

CHRISTOPHER STECK

213.225.7231

christopher.steck@kidder.com

LIC N° 01841338

CHRISTOPHER GIORDANO

213.225.7219

christopher.giordano@kidder.com

LIC N° 01928706

PHILLIP TAGGART

213.225.7237

phil.taggart@kidder.com

LIC N° 02149291

TEAM-ASG.COM | KIDDER.COM

This information supplied herein is from sources we deem reliable. It is provided without any representation, warranty, or guarantee, expressed or implied as to its accuracy. Prospective Buyer or Tenant should conduct an independent investigation and verification of all matters deemed to be material, including, but not limited to, statements of income and expenses. Consult your attorney, accountant, or other professional advisor.

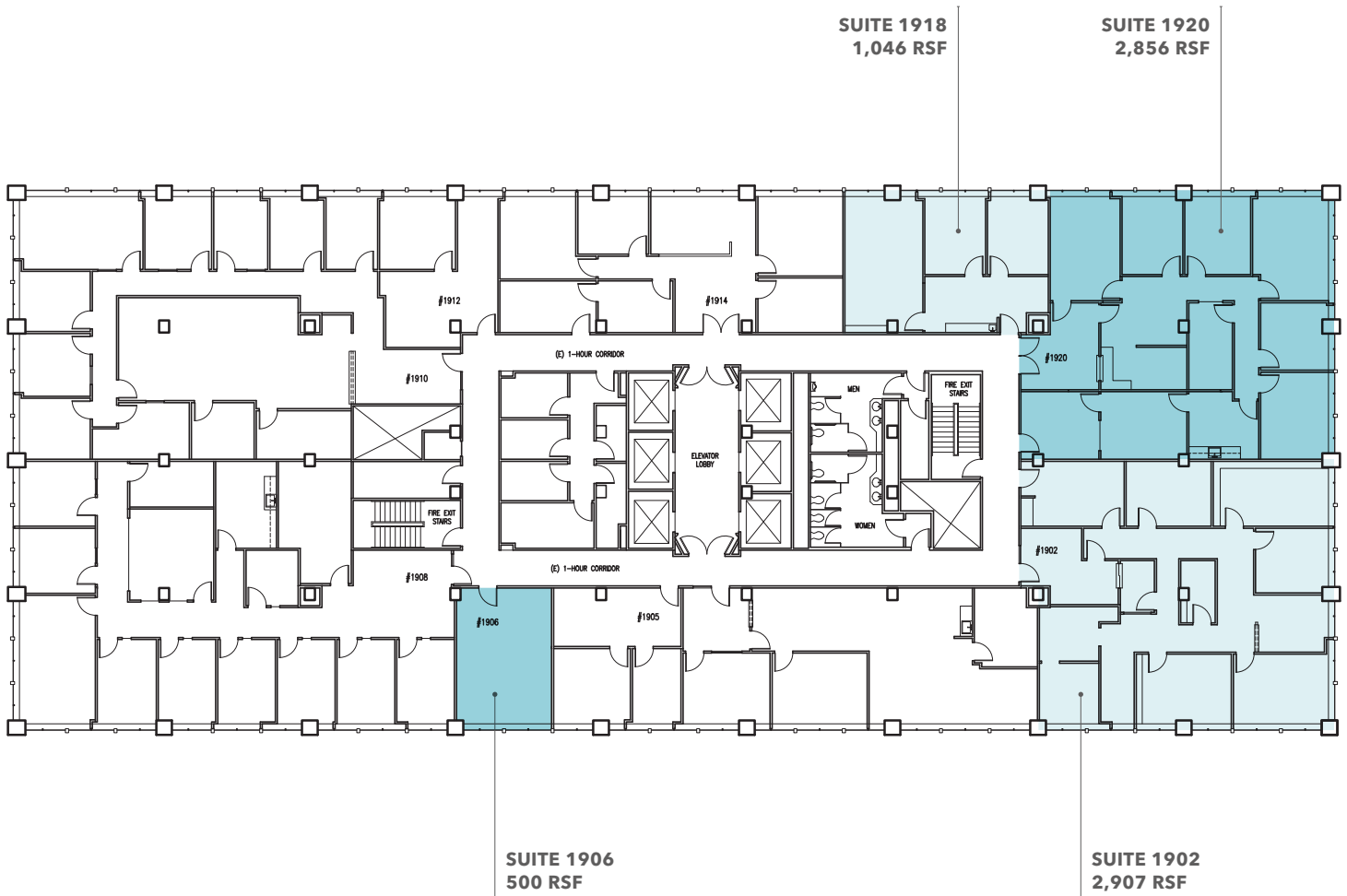


FOR LEASE

3600 Wilshire Boulevard

LOS ANGELES, CA 90010

19th Floor



JOHN ANTHONY, SIOR

213.225.7218

john.anthony@kidder.com

LIC N° 01226464

CHRISTOPHER STECK

213.225.7231

christopher.steck@kidder.com

LIC N° 01841338

CHRISTOPHER GIORDANO

213.225.7219

christopher.giordano@kidder.com

LIC N° 01928706

PHILLIP TAGGART

213.225.7237

phil.taggart@kidder.com

LIC N° 02149291

TEAM-ASG.COM | KIDDER.COM

This information supplied herein is from sources we deem reliable. It is provided without any representation, warranty, or guarantee, expressed or implied as to its accuracy. Prospective Buyer or Tenant should conduct an independent investigation and verification of all matters deemed to be material, including, but not limited to, statements of income and expenses. Consult your attorney, accountant, or other professional advisor.

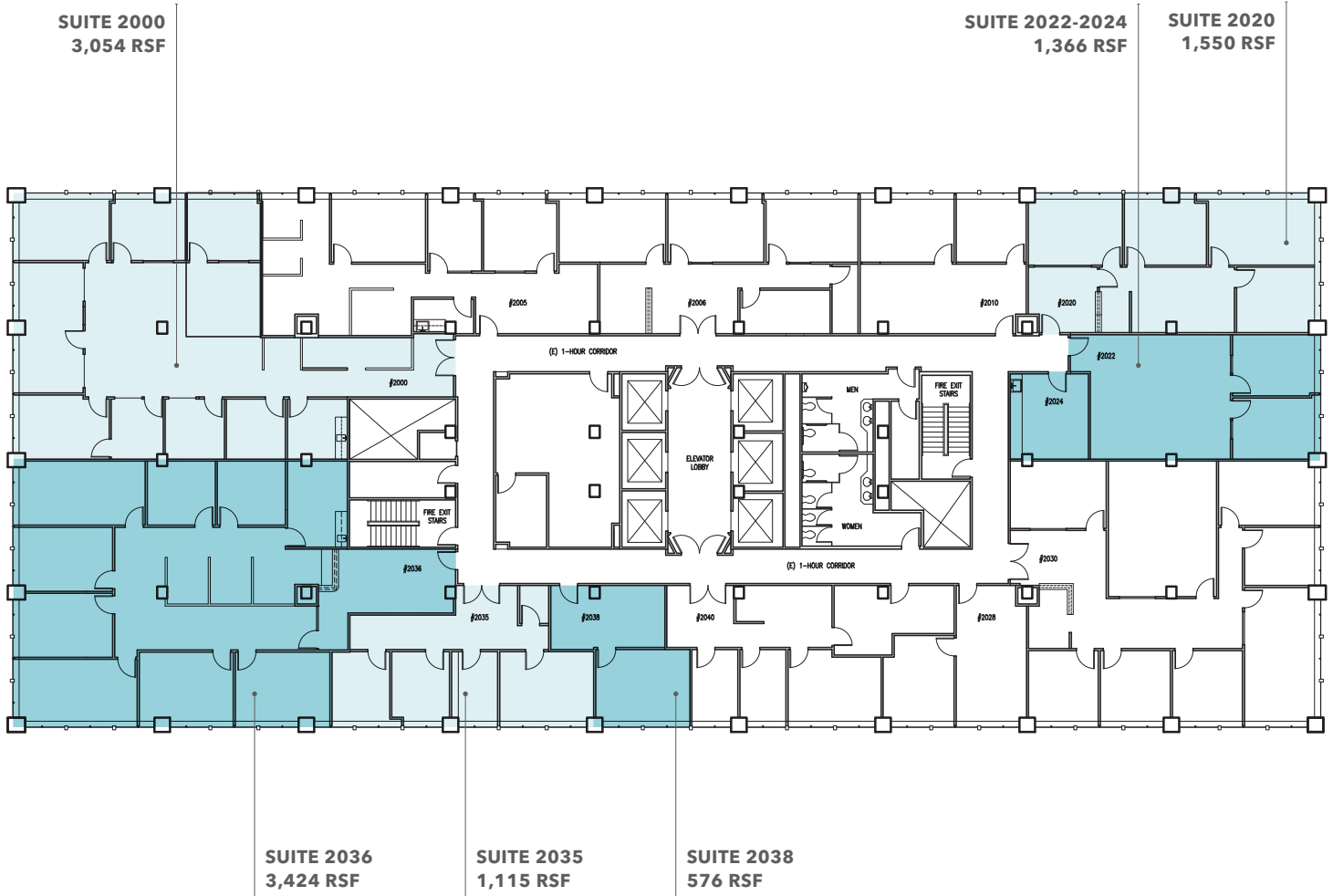


FOR LEASE

3600 Wilshire Boulevard

LOS ANGELES, CA 90010

20th Floor



JOHN ANTHONY, SIOR

213.225.7218

john.anthony@kiddier.com

LIC N° 01226464

CHRISTOPHER STECK

213.225.7231

christopher.steck@kiddier.com

LIC N° 01841338

CHRISTOPHER GIORDANO

213.225.7219

christopher.giordano@kiddier.com

LIC N° 01928706

PHILLIP TAGGART

213.225.7237

phil.taggart@kiddier.com

LIC N° 02149291

TEAM-ASG.COM | KIDDER.COM

This information supplied herein is from sources we deem reliable. It is provided without any representation, warranty, or guarantee, expressed or implied as to its accuracy. Prospective Buyer or Tenant should conduct an independent investigation and verification of all matters deemed to be material, including, but not limited to, statements of income and expenses. Consult your attorney, accountant, or other professional advisor.



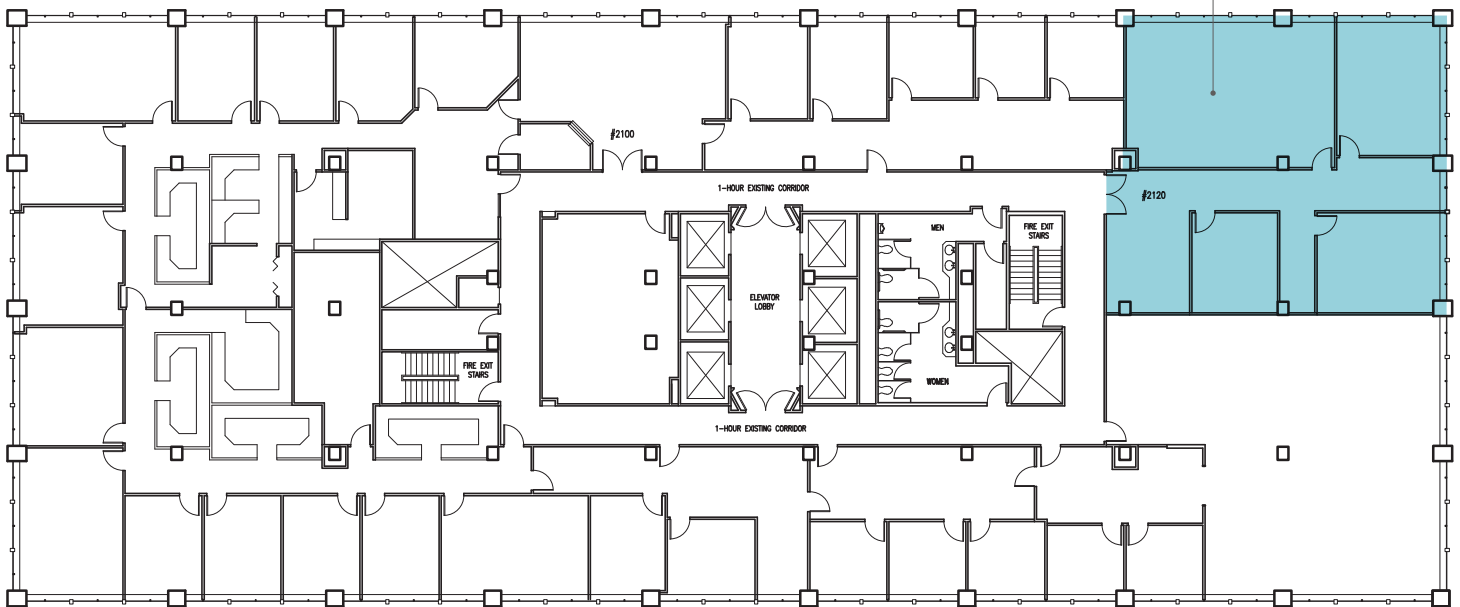
FOR LEASE

3600 Wilshire Boulevard

LOS ANGELES, CA 90010

21st Floor

SUITE 2120
2,962 RSF



JOHN ANTHONY, SIOR

213.225.7218

john.anthony@kidder.com

LIC N° 01226464

CHRISTOPHER STECK

213.225.7231

christopher.steck@kidder.com

LIC N° 01841338

CHRISTOPHER GIORDANO

213.225.7219

christopher.giordano@kidder.com

LIC N° 01928706

PHILLIP TAGGART

213.225.7237

phil.taggart@kidder.com

LIC N° 02149291

TEAM-ASG.COM | KIDDER.COM

This information supplied herein is from sources we deem reliable. It is provided without any representation, warranty, or guarantee, expressed or implied as to its accuracy. Prospective Buyer or Tenant should conduct an independent investigation and verification of all matters deemed to be material, including, but not limited to, statements of income and expenses. Consult your attorney, accountant, or other professional advisor.

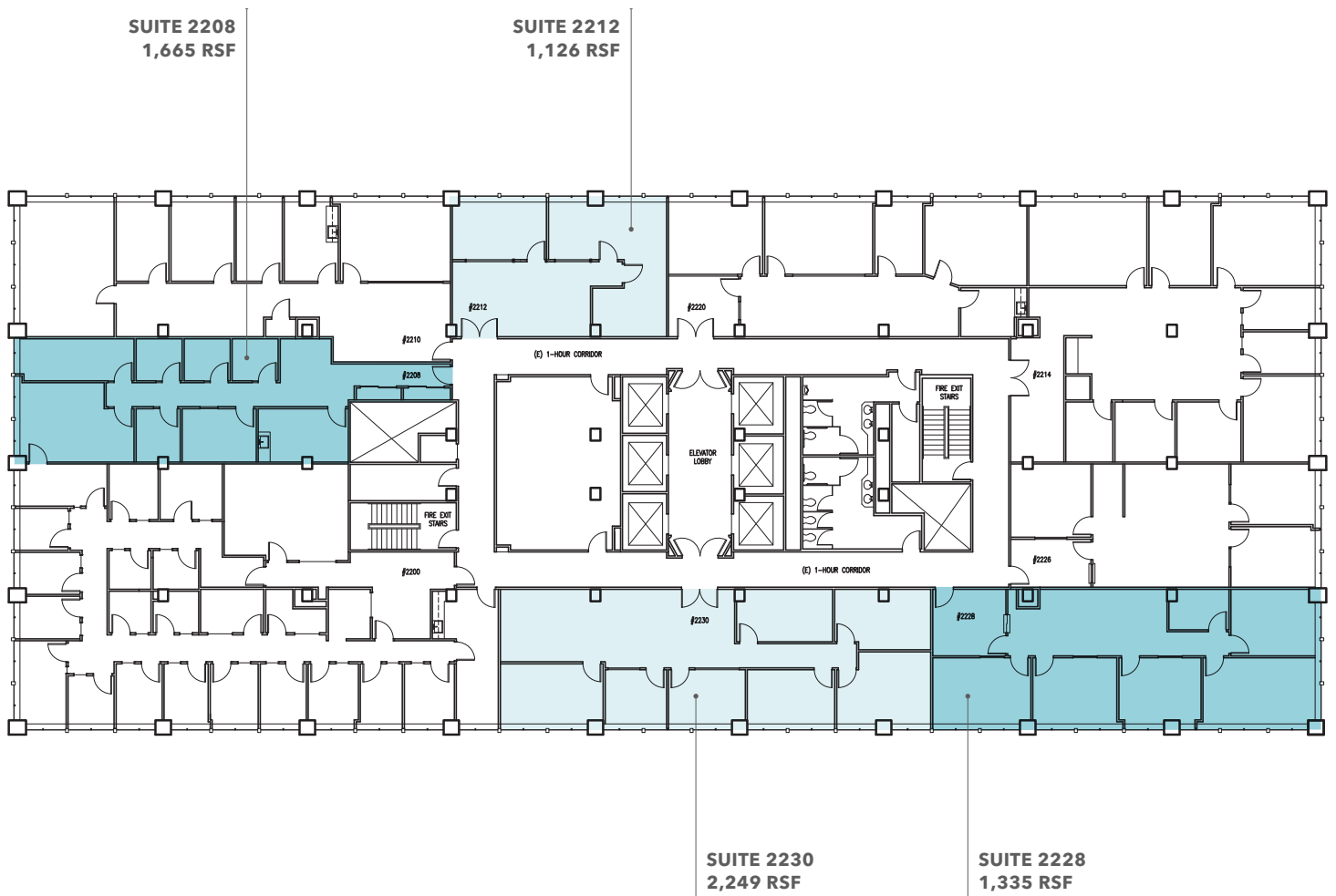


FOR LEASE

3600 Wilshire Boulevard

LOS ANGELES, CA 90010

22nd Floor



JOHN ANTHONY, SIOR

213.225.7218

john.anthony@kidder.com

LIC N° 01226464

CHRISTOPHER STECK

213.225.7231

christopher.steck@kidder.com

LIC N° 01841338

CHRISTOPHER GIORDANO

213.225.7219

christopher.giordano@kidder.com

LIC N° 01928706

PHILLIP TAGGART

213.225.7237

phil.taggart@kidder.com

LIC N° 02149291

TEAM-ASG.COM | KIDDER.COM

This information supplied herein is from sources we deem reliable. It is provided without any representation, warranty, or guarantee, expressed or implied as to its accuracy. Prospective Buyer or Tenant should conduct an independent investigation and verification of all matters deemed to be material, including, but not limited to, statements of income and expenses. Consult your attorney, accountant, or other professional advisor.

