

# 610 SOUTH MAIN

## DTLA

NOW LEASING  
SANTIFELOFTS.LA.COM  
213  
624  
9090

PELOFTS.COM  
OVER 100 YEARS OF LIVING STYLE IN DESIGN  
866.792.6590

PELOFTS.COM  
866.792.6590

RAYMOND JENNIS

COCKTAIL LOUNGE

## RETAIL

750 - 5,067 SF FOR LEASE

**ANTHONY YING**  
TYING@SVN.COM  
949.558.0305  
DRE 02052345

**JUSTINE ECHOLDS**  
JUSTINE.ECHOLDS@SVN.COM  
949.558.0251  
DRE 02112177

**JAY NO**  
JNO@SVN.COM  
949.558.0311  
DRE 02052695

**AMIR SOTORK**  
AMIR.SOTORK@SVN.COM  
310.867.4375  
DRE 02115480



# OVERVIEW

The Pacific Electric Lofts is the center of the Downtown Renaissance that is occurring along Main Street and 6th Street. Set among what can be characterized as a mini SOHO District you will find a revitalized community consisting of high density residential units, and a mix of trendy and historic restaurants, cafes and bars. Join Cole's (founded in 1908 and the oldest operating restaurant and bar in Los Angeles), Mignon, Artisan House, Pupper Club and others.

## PROPERTY HIGHLIGHTS

- Spaces are ideal for a small cafes, general retail, fitness and professional services.
- 5,067SF, 2nd generation restaurant space also currently available, fully built out with original leaded glass walls but needs some renovation. *A type 47 full liquor is also available for sale.*
- 314 lofts above and over 4,000 residential units within the a one mile radius
- Numerous affordable parking garages and lots directly across the street
- High ceilings
- Property is one of the most historic buildings in Los Angeles
- 6th Street between Main and Los Angeles is one of the most active blocks in Downtown



## OFFERING SUMMARY

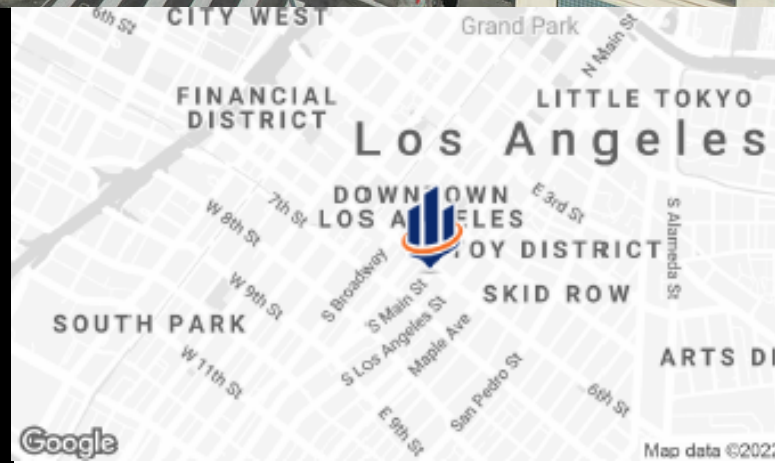
SPACE TYPE: **RETAIL | OFFICE**

AVAILABLE: **750 - 5,067 SF**

LEASE RATE: **NEGOTIABLE**

LEASE TYPE: **NNN**

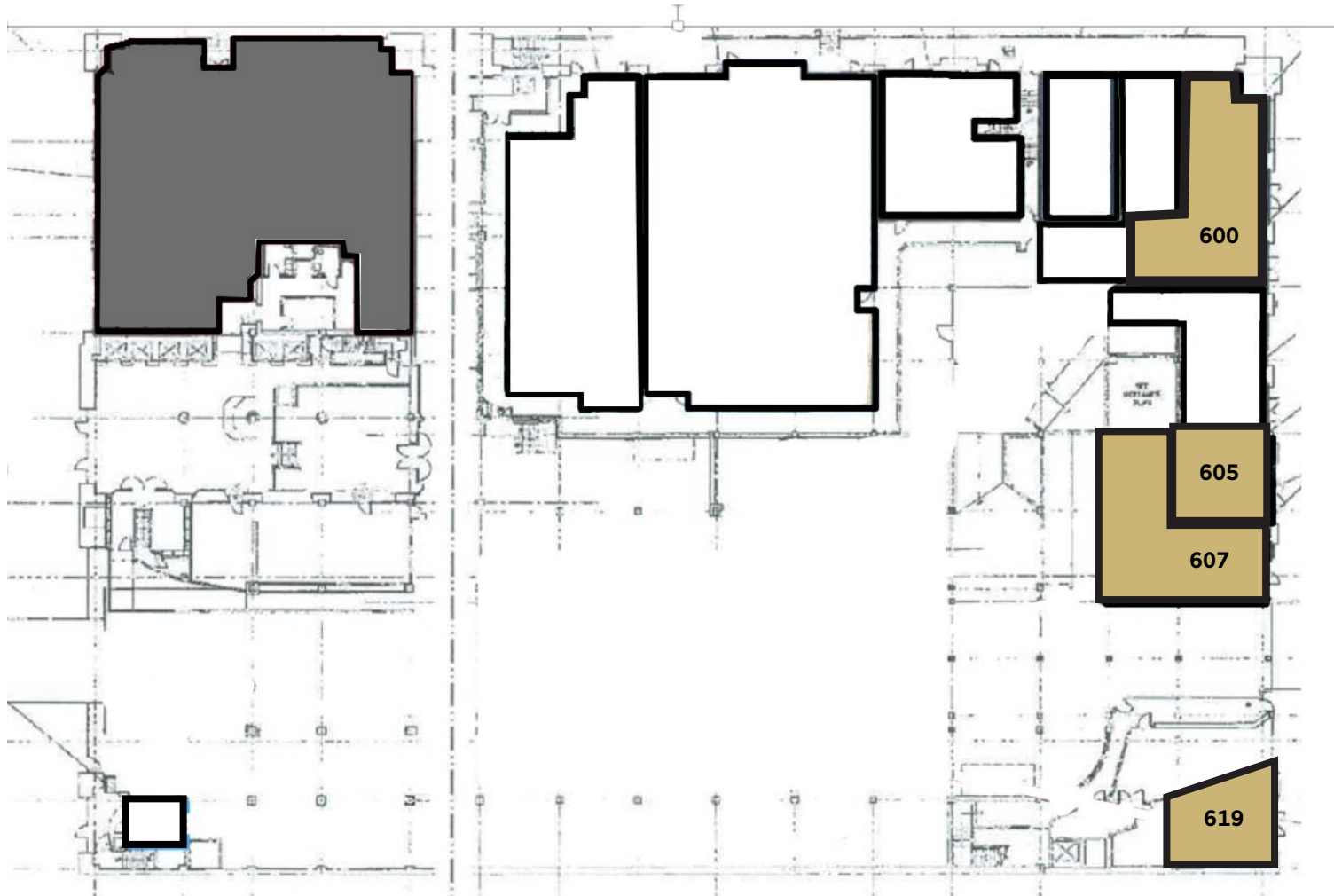
610 S FLOWER STREET | DOWNTOWN LA, CA 90014





# EXTERIOR PHOTOS

S MAIN ST



E 6TH ST

SUITE	STATUS	SIZE	TYPE
-------	--------	------	------

605	Available	1,192 SF	NNN
607	Available	1,268 SF	NNN
619	Available	750 SF	NNN
600	Available	5,067 SF	NNN

FLOOR PLAN



## POPULATION

1 MILE 3 MILES 5 MILES

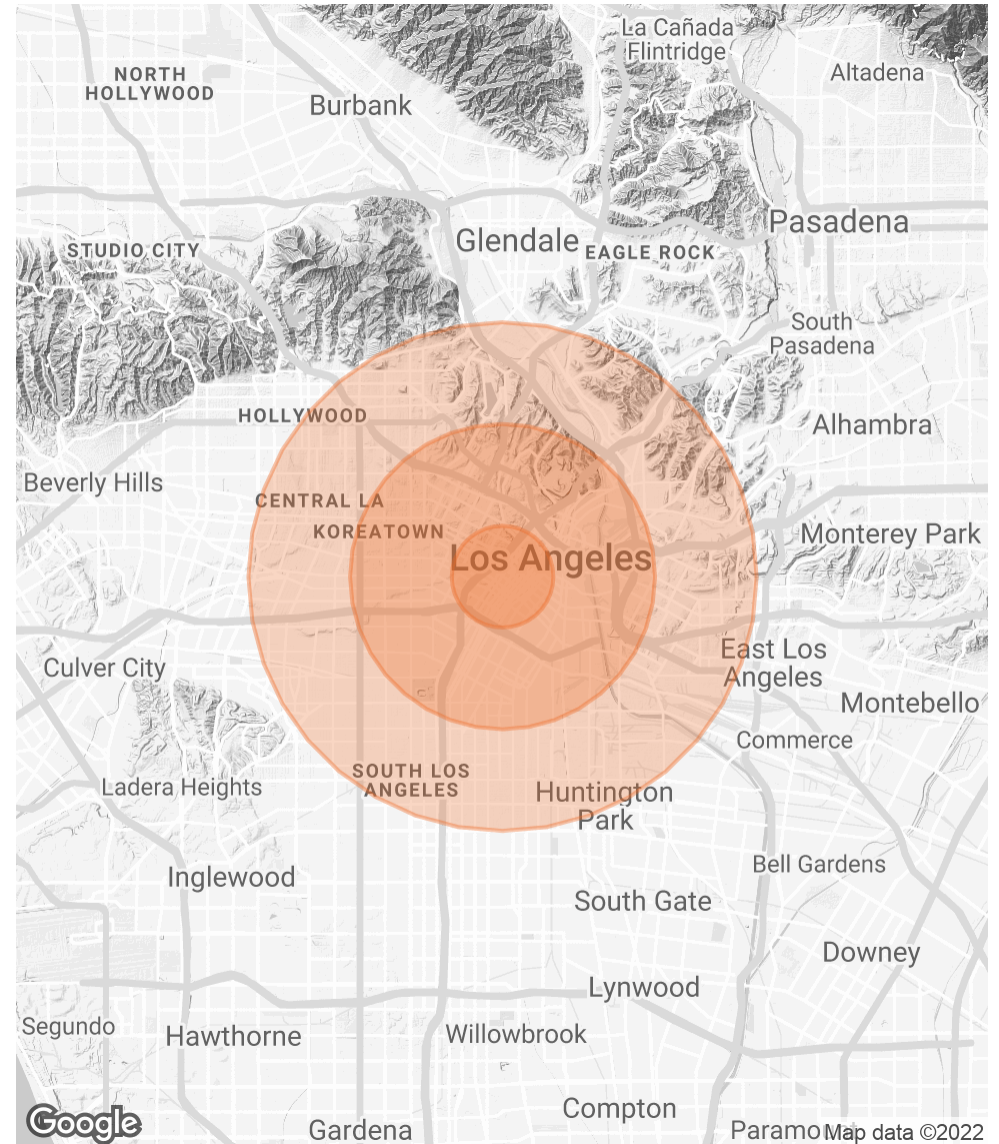
	1 MILE	3 MILES	5 MILES
<b>TOTAL POPULATION</b>	10,552	30,236	76,495
<b>AVERAGE AGE</b>	45.0	42.4	35.9
<b>AVERAGE AGE (MALE)</b>	45.4	42.6	36.4
<b>AVERAGE AGE (FEMALE)</b>	44.2	43.0	35.7

## HOUSEHOLDS & INCOME

1 MILE 3 MILES 5 MILES

	1 MILE	3 MILES	5 MILES
<b>TOTAL HOUSEHOLDS</b>	6,557	16,219	31,623
<b># OF PERSONS PER HH</b>	1.6	1.9	2.4
<b>AVERAGE HH INCOME</b>	\$36,494	\$44,582	\$40,264
<b>AVERAGE HOUSE VALUE</b>	\$380,363	\$379,577	\$405,830

\* Demographic data derived from 2010 US Census



# DEMOGRAPHICS



**ANTHONY YING**  
TYING@SVN.COM  
949.558.0305  
DRE 02052345

**JUSTINE ECHOLDS**  
JUSTINE.ECHOLDS@SVN.COM  
949.558.0251  
DRE 02112177

**JAY NO**  
JNO@SVN.COM  
949.558.0311  
DRE 02052695

**AMIR SOTORK**  
AMIR.SOTORK@SVN.COM  
310.867.4375  
DRE 02115480

