

2710 Walton Ave., Cleveland, OH



Property Features

- Building 1: 15,108 SF
Building 2: 7,554
Total: 22,359 SF
- Site Size: .413 Acres
- Parcel #: 007-27-046 & 007-27-041
- 10 minutes from Downtown Cleveland
- Well located between up and coming cities of Tremont and Ohio City
- Opportunity to modernize this historic multi-use facility to fit one's needs

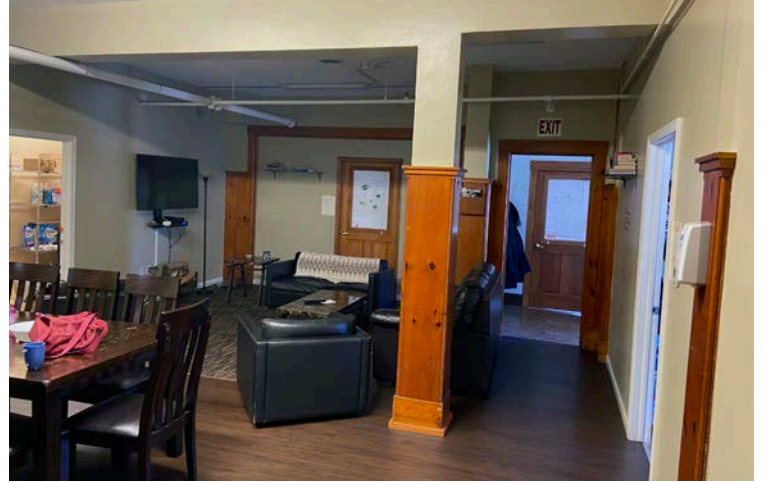


Alec J. Pacella, CCIM
+1 216 455 0925
apacella@naipvc.com

Joe Hauman
+1 216 455 0885
joe.hauman@naipvc.com

FOR SALE

Interior Photos

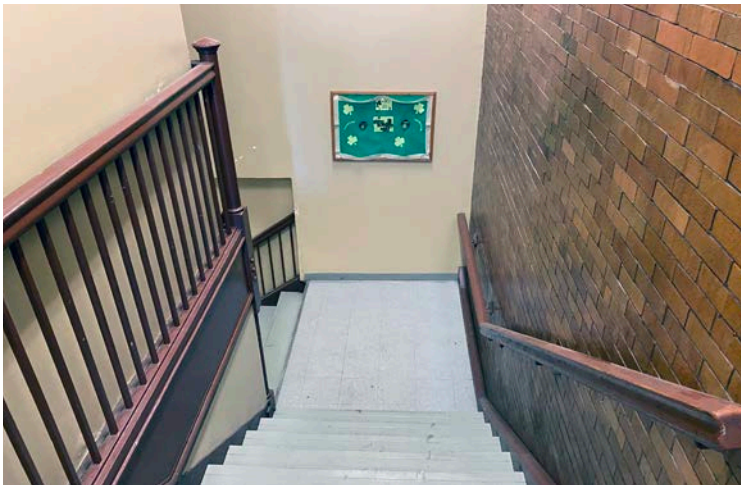


Alec J. Pacella, CCIM
+1 216 455 0925
apacella@naipvc.com

Joe Hauman
+1 216 455 0885
joe.hauman@naipvc.com

FOR SALE

Interior Photos

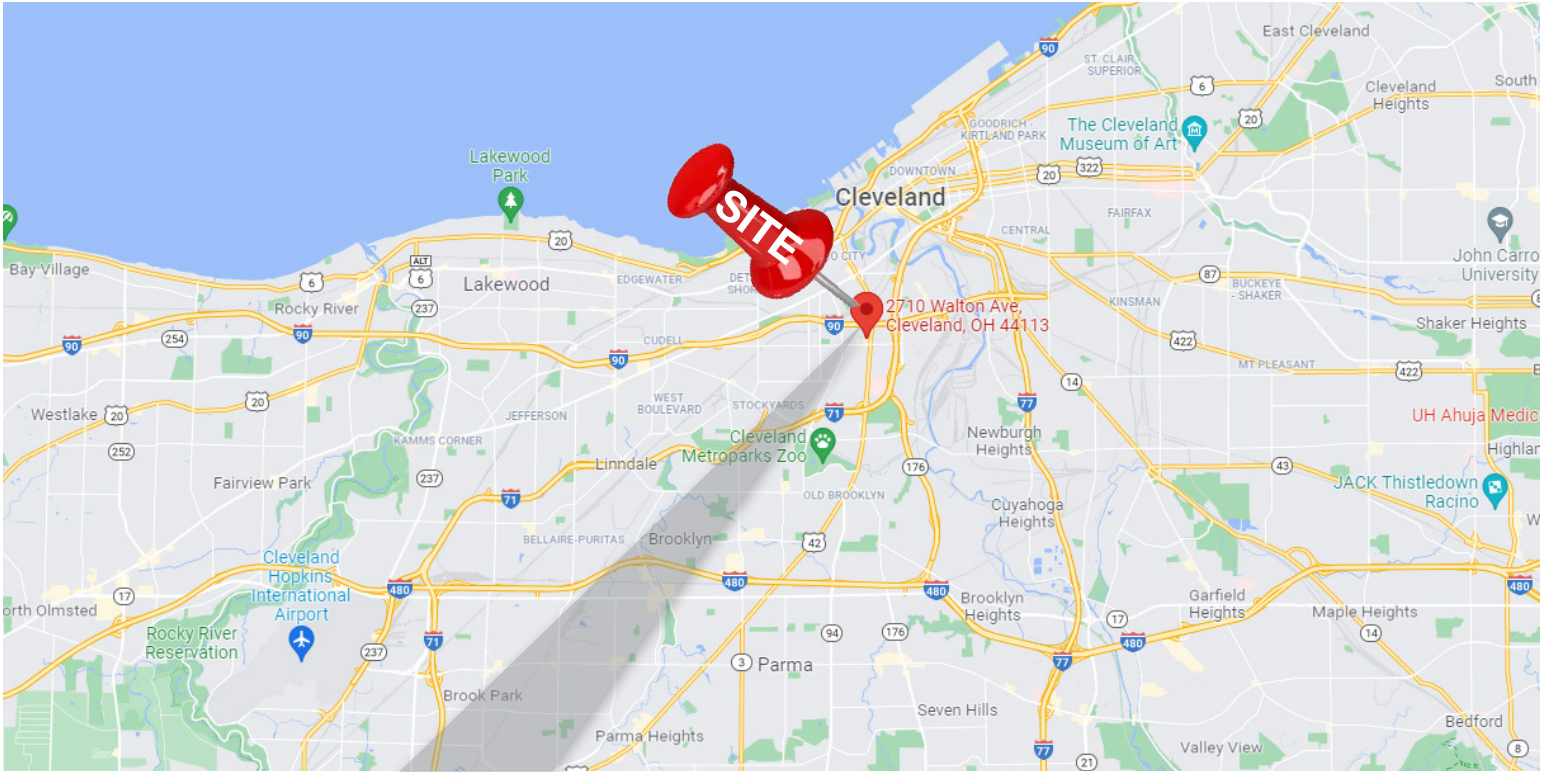


Alec J. Pacella, CCIM
+1 216 455 0925
apacella@naipvc.com

Joe Hauman
+1 216 455 0885
joe.hauman@naipvc.com

FOR SALE

Location

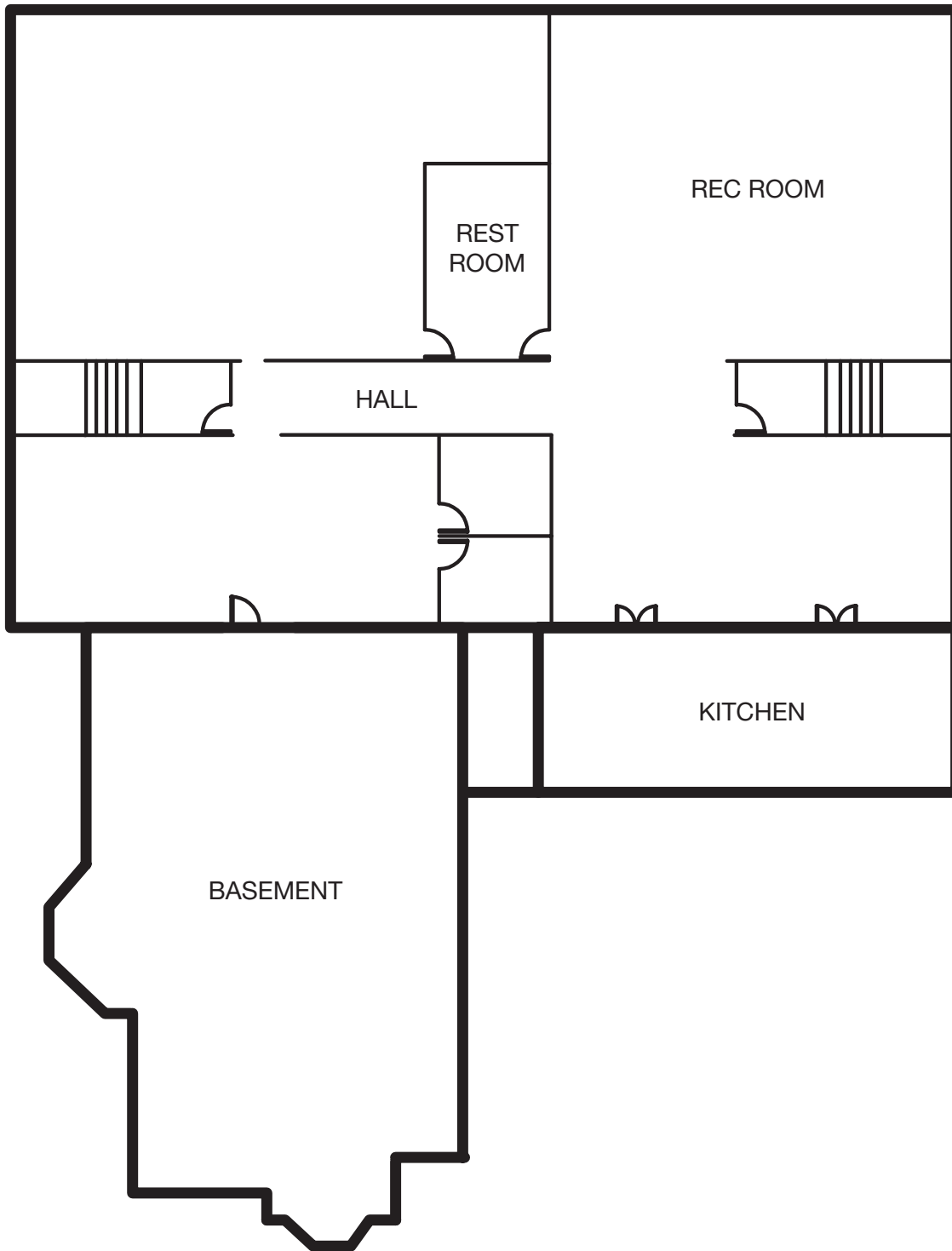


Alec J. Pacella, CCIM
+1 216 455 0925
apacella@naipvc.com

Joe Hauman
+1 216 455 0885
joe.hauman@naipvc.com

FLOORPLAN

Basement

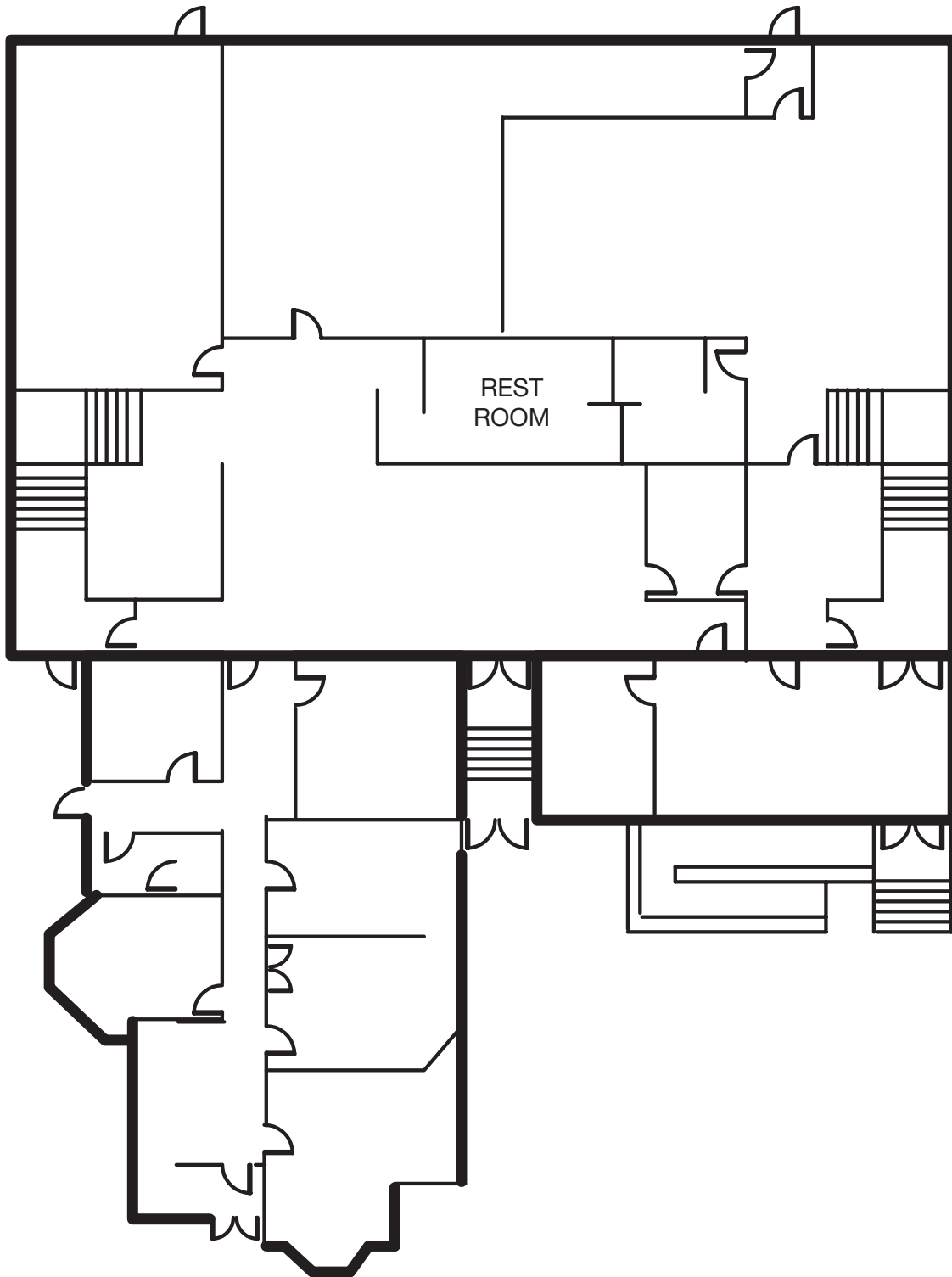


Alec J. Pacella, CCIM
+1 216 455 0925
apacella@naipvc.com

Joe Hauman
+1 216 455 0885
joe.hauman@naipvc.com

FLOORPLAN

1st Floor

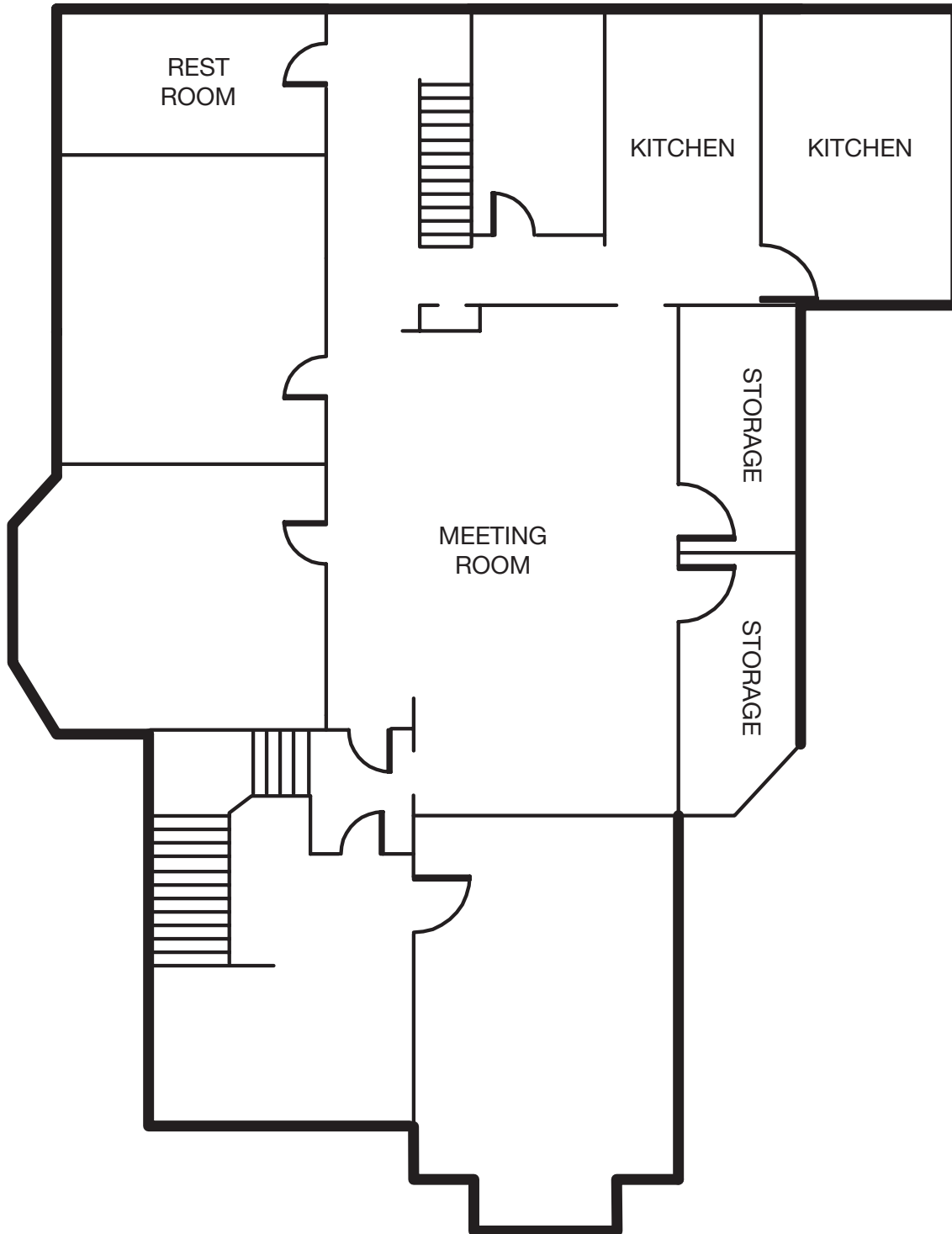


Alec J. Pacella, CCIM
+1 216 455 0925
apacella@naipvc.com

Joe Hauman
+1 216 455 0885
joe.hauman@naipvc.com

FLOORPLAN

2nd Floor (House)



Alec J. Pacella, CCIM
+1 216 455 0925
apacella@naipvc.com

Joe Hauman
+1 216 455 0885
joe.hauman@naipvc.com

DEMOGRAPHS

1 Mile Radius

KEY FACTS

17,487

Population



2.4

Average Household Size

35.0

Median Age

\$34,709

Median Household Income

EDUCATION

24%

No High School Diploma



28%

High School Graduate



23%

Some College



25%

Bachelor's/Grad/Pr of Degree

BUSINESS



805

Total Businesses



25,735

Total Employees

EMPLOYMENT



57%

White Collar



28%

Blue Collar



15%

Services

11.0%

Unemployment Rate

INCOME



\$34,709

Median Household Income



\$21,026

Per Capita Income



\$13,417

Median Net Worth

Households By Income

The largest group: <\$15,000 (23.7%)

The smallest group: \$200,000+ (2%)

Indicator ▲	Value	Diff	
<\$15,000	23.7%	+9.5%	
\$15,000 - \$24,999	14.8%	+4.5%	
\$25,000 - \$34,999	11.7%	+1.9%	
\$35,000 - \$49,999	12.3%	-0.3%	
\$50,000 - \$74,999	14.5%	-3.4%	
\$75,000 - \$99,999	9.3%	-2.7%	
\$100,000 - \$149,999	9.2%	-3.8%	
\$150,000 - \$199,999	2.5%	-2.4%	
\$200,000+	2%	-3.5%	

Bars show deviation from Cuyahoga County

This infographic contains data provided by Esri, Esri and Infogroup. The vintage of the data is 2021, 2026.

© 2021 Esri

Alec J. Pacella, CCIM

+1 216 455 0925

apacella@naipvc.com

Joe Hauman

+1 216 455 0885

joe.hauman@naipvc.com

DEMOGRAPHS

3 Mile Radius

KEY FACTS

130,395

Population



2.3

Average Household Size

34.1

Median Age

\$34,140

Median Household Income

EDUCATION

20%

No High School Diploma



30%

High School Graduate



27%

Some College



23%

Bachelor's/Grad/Pr of Degree

BUSINESS



6,270

Total Businesses



142,522

Total Employees

EMPLOYMENT



60%

White Collar



25%

Blue Collar



15%

Services

11.9%

Unemployment Rate

INCOME



\$34,140

Median Household Income



\$21,813

Per Capita Income



\$13,253

Median Net Worth

Households By Income

The largest group: <\$15,000 (25.4%)

The smallest group: \$200,000+ (2.3%)

Indicator ▲	Value	Diff	
<\$15,000	25.4%	+11.2%	
\$15,000 - \$24,999	14.2%	+3.9%	
\$25,000 - \$34,999	11.2%	+1.4%	
\$35,000 - \$49,999	12.8%	+0.2%	
\$50,000 - \$74,999	16.1%	-1.8%	
\$75,000 - \$99,999	8.4%	-3.6%	
\$100,000 - \$149,999	7.2%	-5.8%	
\$150,000 - \$199,999	2.5%	-2.4%	
\$200,000+	2.3%	-3.2%	

Bars show deviation from Cuyahoga County

This infographic contains data provided by Esri, Esri and Infogroup. The vintage of the data is 2021, 2026.

© 2021 Esri

Alec J. Pacella, CCIM

+1 216 455 0925

apacella@naipvc.com

Joe Hauman

+1 216 455 0885

joe.hauman@naipvc.com