

VALLEY NATIONAL BANK PLAZA

5220 Summerlin Commons Blvd. | Fort Myers, FL 33907

Office For Lease



LQ Commercial
REAL ESTATE SERVICES

LOCRE.COM



\$15.00
PSF NNN



3,576
SF



53,640 SF
GLA



\$8.82 PSF
CAM



7.01/1,000 SF
PARKING



2002 / 2023
BUILT / REN

- Great views from prominent Class-A building.
- Full buildout in place with multiple private offices and open areas.
- Centrally located with easy access to arterial roadways.
- Visibility and frontage on Summerlin Road plus pylon signage opportunities available.
- Ample parking.
- Building is equipped with all of the latest internet necessities and fiber optics.



LOCRE.COM/VALLEY-BANK-PLAZA



15-MIN POPULATION

147,556



15-MIN INCOME

\$87,713



15-MIN EMPLOYEES

104,419



3555 Kraft Road #260
Naples, FL 34105

LOCRE.COM

Adam Palmer, CCIM, SIOR
Managing Principal

D: 239.333.2507

C: 239.898.8686

apalmer@lqcre.com

Steve Wood
Associate

D: 239.333.2509

C: 239.281.1001

swood@lqcre.com

VALLEY NATIONAL BANK PLAZA

5220 Summerlin Commons Blvd. | Fort Myers, FL 33907

Office For Lease



LQ Commercial
REAL ESTATE SERVICES

LQCRE.COM



 **LQ Commercial**
REAL ESTATE SERVICES
3555 Kraft Road #260
Naples, FL 34105
LQCRE.COM

Adam Palmer, CCIM, SIOR
Managing Principal
D: 239.333.2507
C: 239.898.8686
apalmer@lqcre.com

Steve Wood
Associate
D: 239.333.2509
C: 239.281.1001
swood@lqcre.com

VALLEY NATIONAL BANK PLAZA

5220 Summerlin Commons Blvd. | Fort Myers, FL 33907

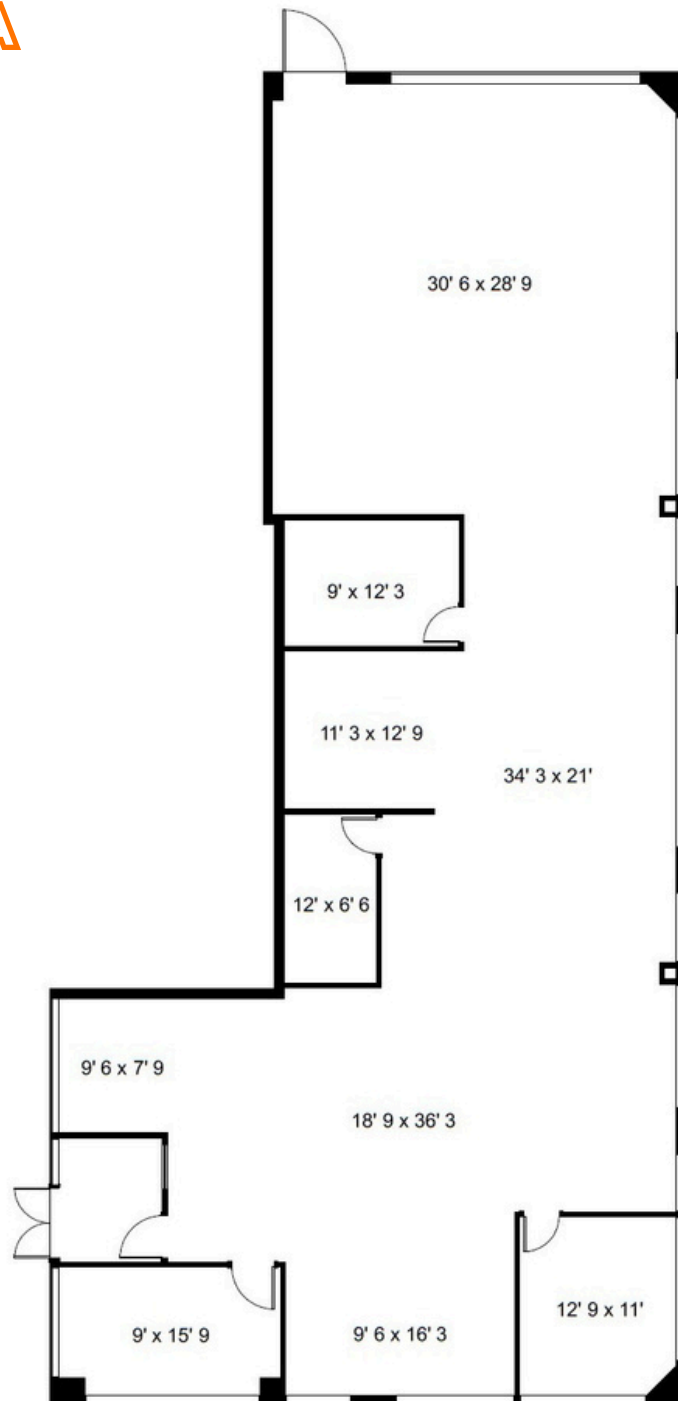
Office For Lease



LQ Commercial
REAL ESTATE SERVICES

LQCRE.COM

SUITE 100-A



3555 Kraft Road #260
Naples, FL 34105

LQCRE.COM

Adam Palmer, CCIM, SIOR
Managing Principal

D: 239.333.2507

C: 239.898.8686

apalmer@lqcre.com

Steve Wood
Associate

D: 239.333.2509

C: 239.281.1001

swood@lqcre.com