

For Lease
±1,348 SF
Office Space

Yes – THAT Reynolds!
Previously lived in by
Burt himself!



**LAST SPACE
REMAINING**

Reynolds Plaza

1061 E. Indiantown Road | Jupiter, FL 33477

Property Features

- Newly renovated first-class office building with new owners
- Fantastic, contemporary upgrades to exterior, lobby, and common area restrooms
- Less than half a mile from Jupiter Beach with panoramic views of the Atlantic
- Close to numerous restaurants, banking, and shopping, including Harbourside Place
- Easy access to A1A, US-1, I-95 and the Florida Turnpike
- Located east of US-1 on the north side of Indiantown Road, next to Maltz Jupiter Theatre

Key Highlights



Great location close to main roads and highways



Adjacent to Jupiter Beach and area amenities



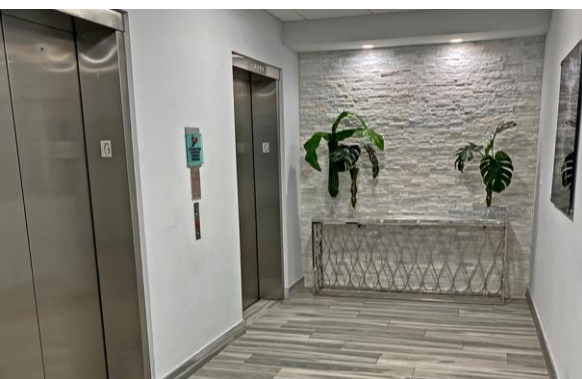
Ample parking

Lesley Sheinberg, Managing Director
561 254 7810 | lsheinberg@mhcreal.com



FOR LEASE: REYNOLDS PLAZA

±1,348 SF Office Space Near Jupiter Beach



Easy access to A1A, I-95 and the Florida Turnpike, offering a prime Northern Palm Beach County location for professionals who want to embrace the Florida lifestyle.

Property: 5-story office building in Jupiter submarket

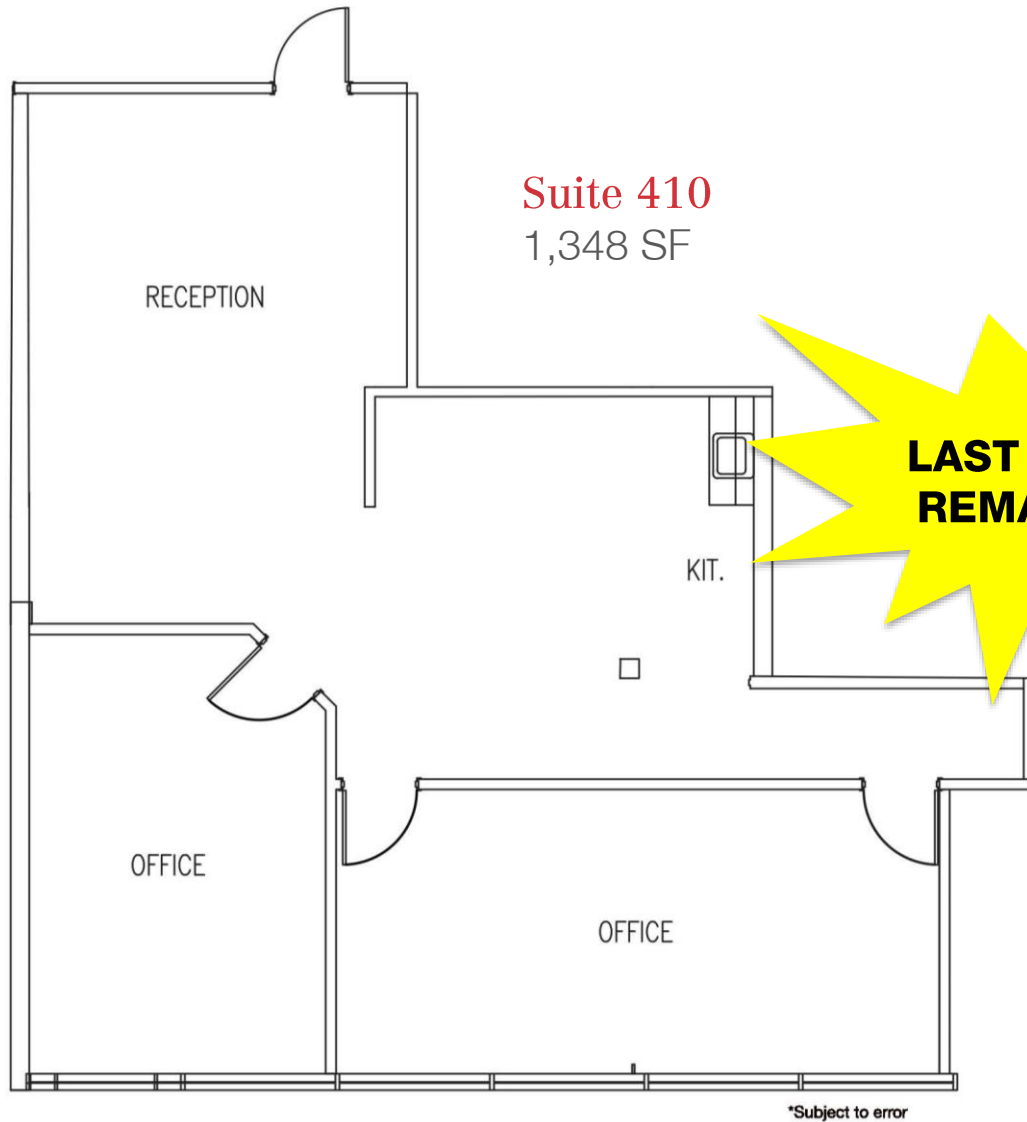
Available Space: Suite 410: 1,348 SF

Rental Rate: \$28.00/SF NNN; \$12.50/SF CAM

Parking: Free surface parking (5.2:1,000)

FOR LEASE: REYNOLDS PLAZA

±1,348 SF Office Space Near Jupiter Beach



**CALL TODAY TO LEARN
MORE INFORMATION**

561 471 8000

Lesley Sheinberg, Managing Director
561 254 7810 | lsheinberg@mhcreal.com

NO WARRANTY OR REPRESENTATION, EXPRESS OR IMPLIED, IS MADE AS TO THE ACCURACY OF THE INFORMATION CONTAINED HEREIN, AND THE SAME IS SUBMITTED SUBJECT TO ERRORS, OMISSIONS, CHANGE OF PRICE, OR WITHDRAWAL WITHOUT NOTICE.



561 471 8000



1601 Forum Place, Suite 700
West Palm Beach, FL 33401



www.mhcreal.com