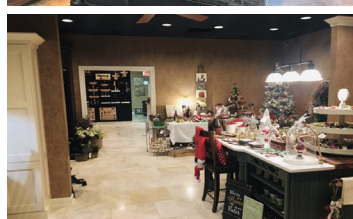


27-A JANDUS ROAD
CARY, IL 60013

FOR
LEASE

MLS # 11665603

November 3, 2022



RETAIL / OFFICE SPACE
2,473 SF

\$3,091.25/mo. (\$15. psf Gross)

DESCRIPTION

**Retail / Office Space
2,473 SF**

Downtown Cary retail or office space currently occupied by Kitchens by Julie thru 2/28/23..

Additional parking available for free evenings and weekends in commuter train lot. Facing the railroad tracks for great visibility between nail salon and Cary Grove Performing Arts. 2,473 SF priced at \$15 psf gross (\$3,091.25/mo.) plus utilities.

SPECIFICATIONS

Description	Retail / Office Space
Space Size	2,473 SF
Year Built	1947
HVAC System	GFA / Central Air
Electric	100 Amp
Washrooms	1
Ceiling Height	9'
Parking	±15 common
Sewer/Water	City
Zoning	B1
CAM & Taxes	Included
Tenant Pays	Utilities
Lease Term	3-5 Years
PIN #	19-13-277-005

DEMOGRAPHICS

	1 Mile	3 Miles	5 Miles
Population	8,609	38,494	97,053
Avg Household Income	\$87,675	\$104,808	\$91,987

No warranty or representation is made as to the accuracy of the foregoing information. Terms of sale or lease and availability are subject to change or withdrawal without notice.
This document is for information purposes only. No offer of sub-agency is being made.

PREMIER
COMMERCIAL REALTY

- Industrial
- Commercial
- Office
- Land
- Business

CLICK HERE
to view our website

BRUCE KAPLAN
Senior Broker

Office: 847-854-2300 Ext 20
Cell: 847-507-1759

BruceK@PremierCommercialRealty.com

9225 S. IL Route 31
Lake in the Hills, IL 60156
www.PremierCommercialRealty.com
Office: 847-854-2300 | Fax: 847-854-2380

KEVIN KAPLAN, CCIM
Senior Broker

Office: 847-854-2300 Ext 13
Cell: 309-261-0920

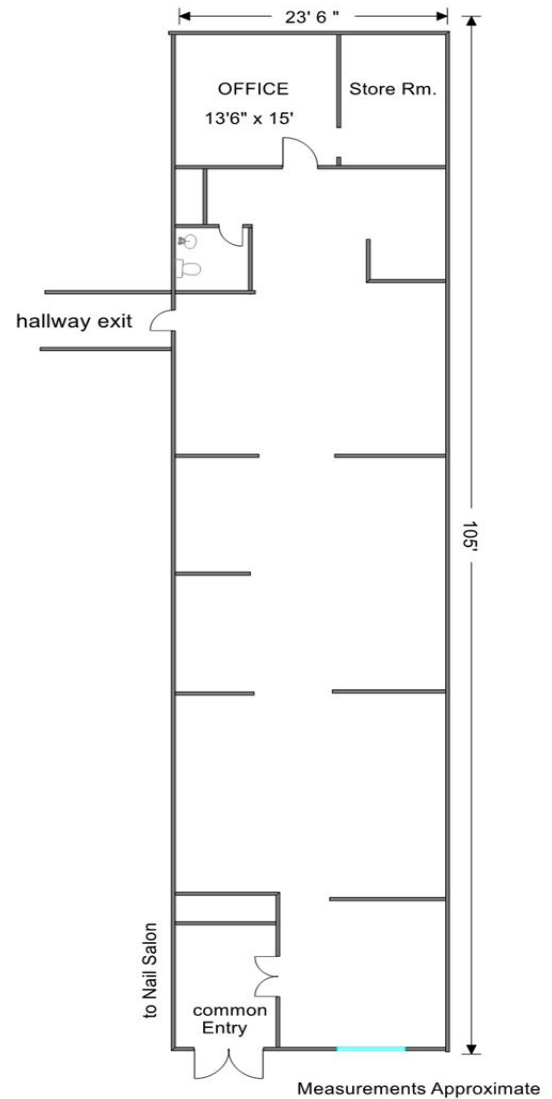
KevinK@PremierCommercialRealty.com

27-A JANDUS ROAD
CARY, IL 60013

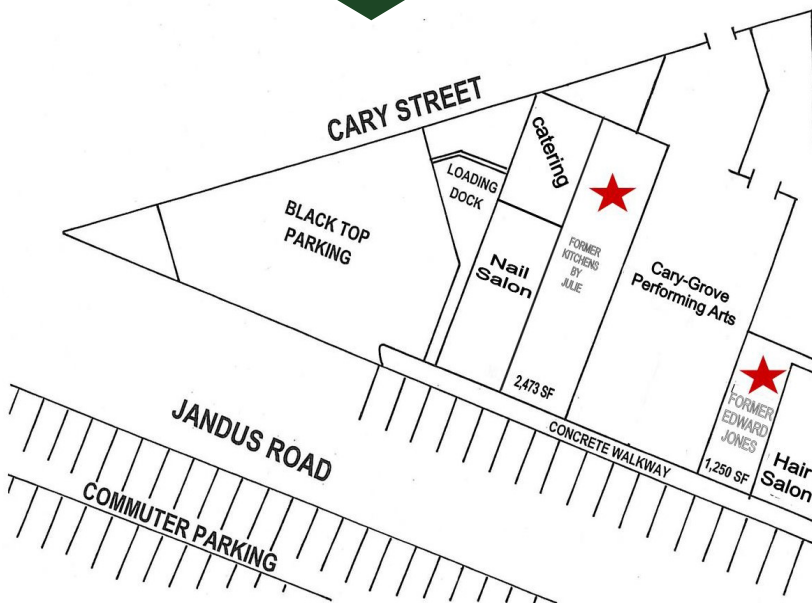
FOR
LEASE



LAYOUT 27-A JANDUS



SITE



PREMIER
COMMERCIAL REALTY

- Industrial
- Commercial
- Office
- Land
- Business

CLICK HERE
to view our website

9225 S. IL Route 31
Lake in the Hills, IL 60156
www.PremierCommercialRealty.com
Office: 847-854-2300 | Fax: 847-854-2380