

FOR LEASE

6519 Towpath Road
East Syracuse, New York 13057



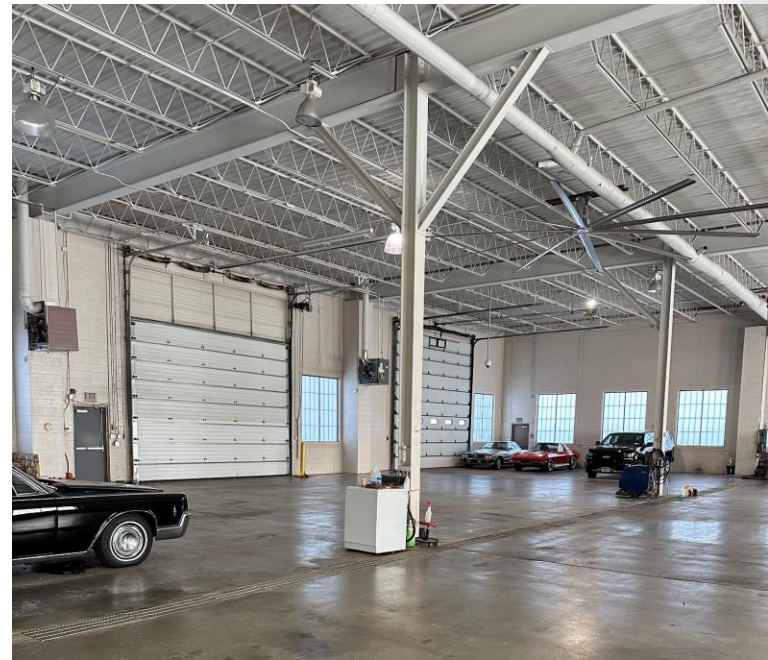
High Bay Warehouse with Yard Space



12,003± SF Warehouse/Flex

Property Highlights

- 22' clear height
- Three (3) massive grade level doors
 - 1 (20'6"H x 20'W)
 - 2 (15'6"H x 20'W)
- 1.18± acres of fenced yard space
- Trench style floor drain
- Unit heaters throughout
- 500± SF of existing office
- Additional office space available
- Exceptional access to interstates and Erie Blvd E retail corridor



Contact

STEPHEN SCUDERI
Real Estate Salesperson
+1 315 445 8517
sscuderi@pyramidbrokerage.com

JOHN L. CLARK, SIOR, CRE
President, Real Estate Broker
+1 315 445 8509
jclark@pyramidbrokerage.com

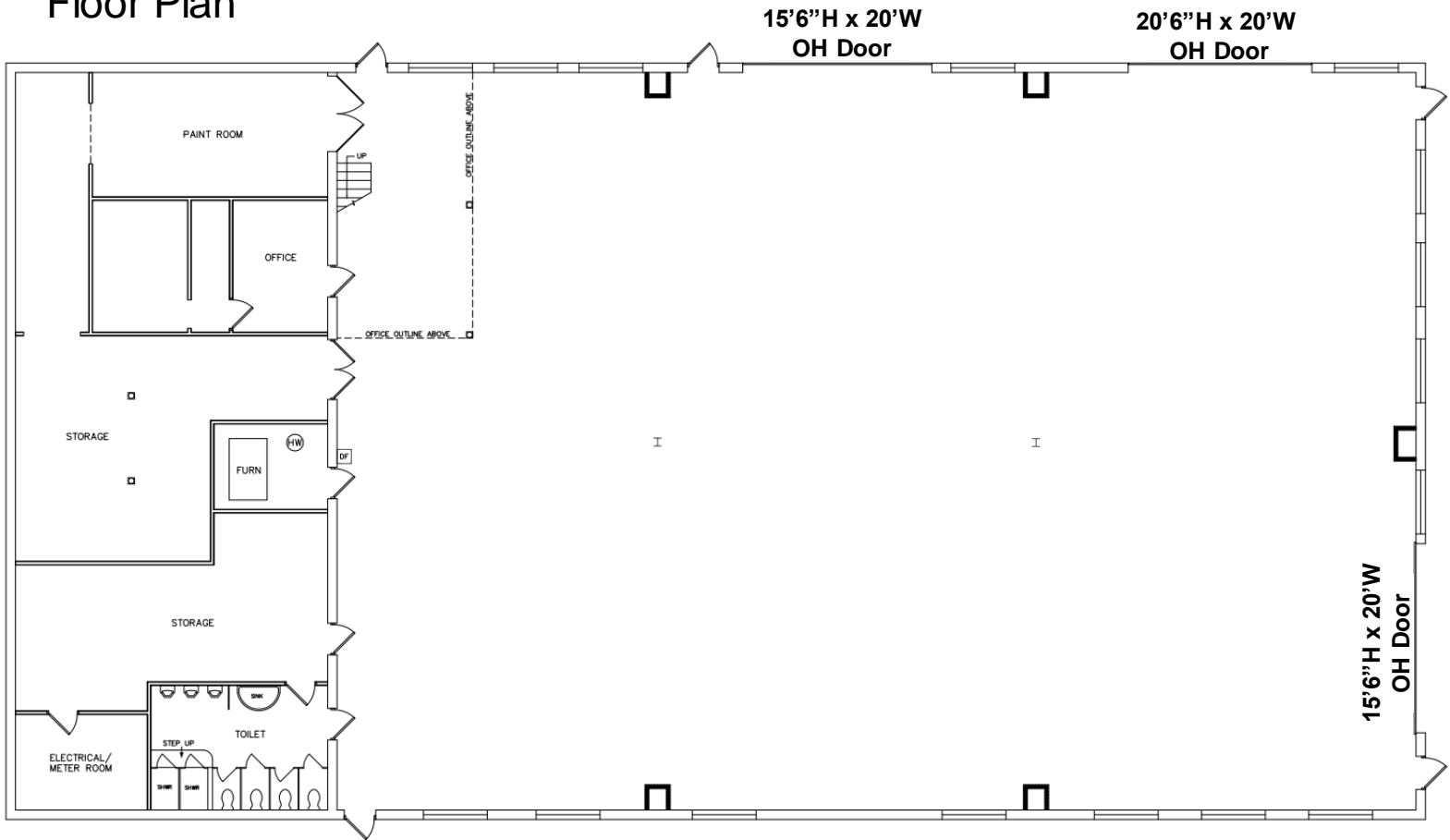
5845 Widewaters Pkwy, Suite 200
East Syracuse, New York 13057
+1 315 445 1030
pyramidbrokerage.com

FOR LEASE

6519 Towpath Road | East Syracuse, New York

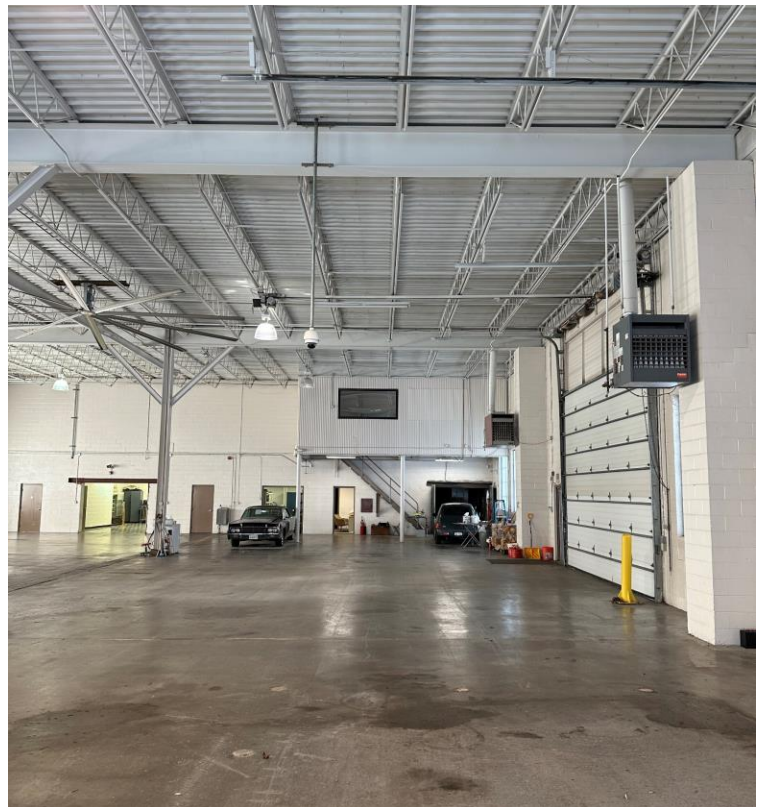
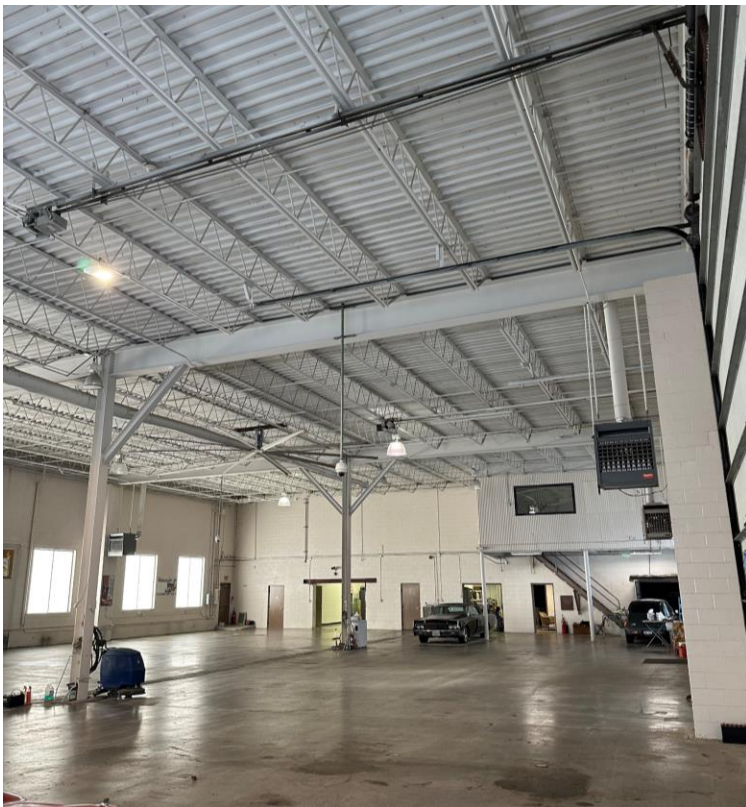


Floor Plan



FOR LEASE

6519 Towpath Road | East Syracuse, New York



FOR LEASE

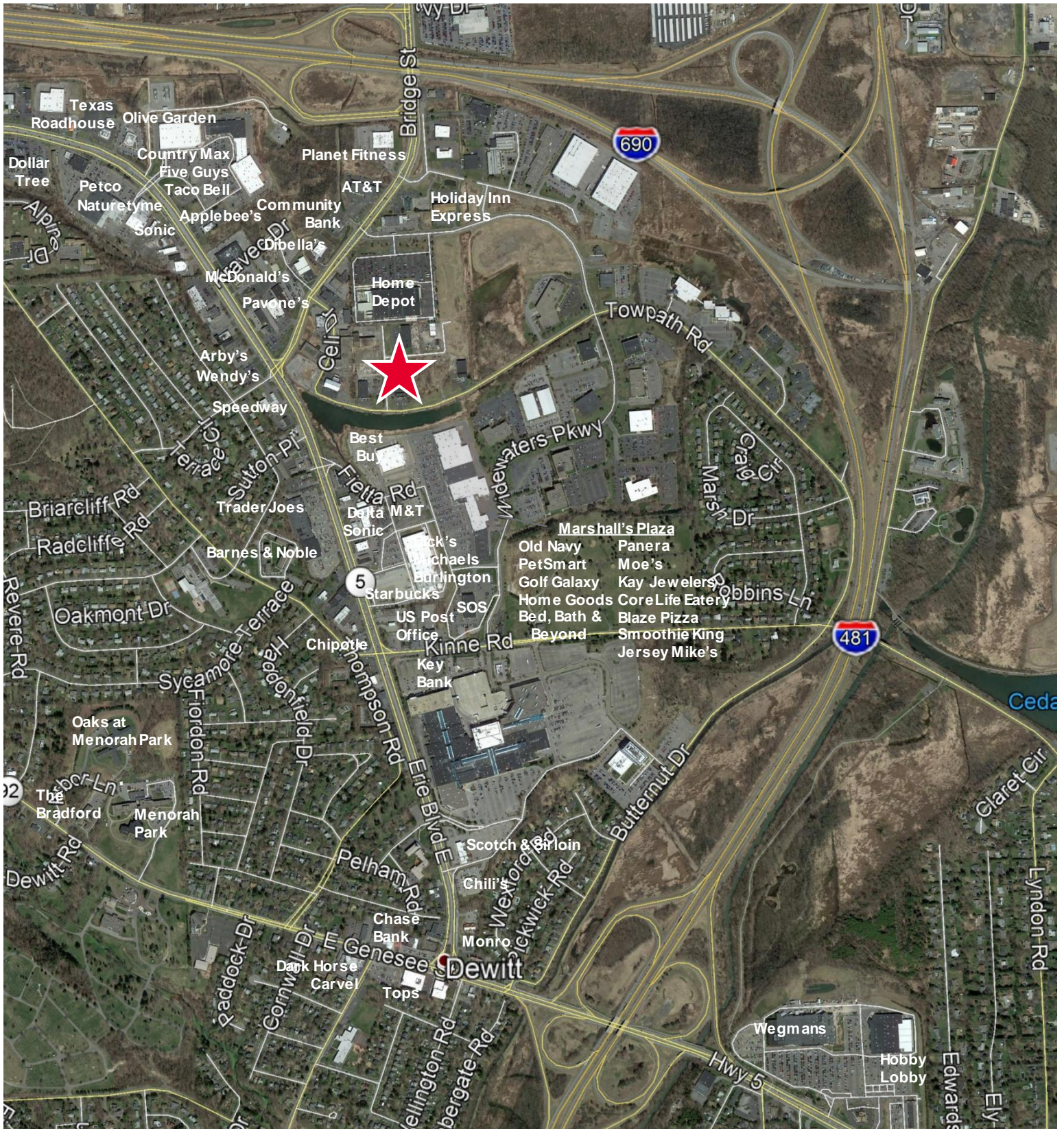
6519 Towpath Road | East Syracuse, New York



2,500± SF Office Space Also Available

FOR LEASE

6519 Towpath Road | East Syracuse, New York



Independently Owned and Operated / A Member of the Cushman & Wakefield Alliance

Cushman & Wakefield Copyright 2022. No warranty or representation, express or implied, is made to the accuracy or completeness of the information contained herein, and same is submitted subject to errors, omissions, change of price, rental or other conditions, withdrawal without notice, and to any special listing conditions imposed by the property owner(s). As applicable, we make no representation as to the condition of the property (or properties) in question.