

FOR LEASE

6519 Towpath Road
East Syracuse, New York 13057



Office Suites Available



Professional Office Space

Property Highlights

- 2,521± SF available on the first floor
- Can be demised into smaller suites
- Ample free parking available
- Easily accessible from Bridge Street and I-690
- In close proximity to major shopping centers and additional amenities
- Ideal for legal, financial, tech, insurance, etc.

Demographic	1 Mile	3 Miles	5 Miles
Population	5,305	60,472	172,160
Households	1,880	25,865	69,078
Average H.H. Income	\$98,647	\$97,152	\$77,717
Daytime Employees	10,297	40,298	155,129

Source: ESRI Business Analyst 2022

Traffic Counts	
Bridge Street	16,055 AADT
Erie Boulevard East	17,672 AADT

Source: NYS DOT 2019

Contact

STEPHEN SCUDERI
Real Estate Salesperson
+1 315 445 8517
sscuderi@pyramidbrokerage.com

JOHN L. CLARK, SIOR, CRE
President, Real Estate Broker
+1 315 445 8509
jclark@pyramidbrokerage.com

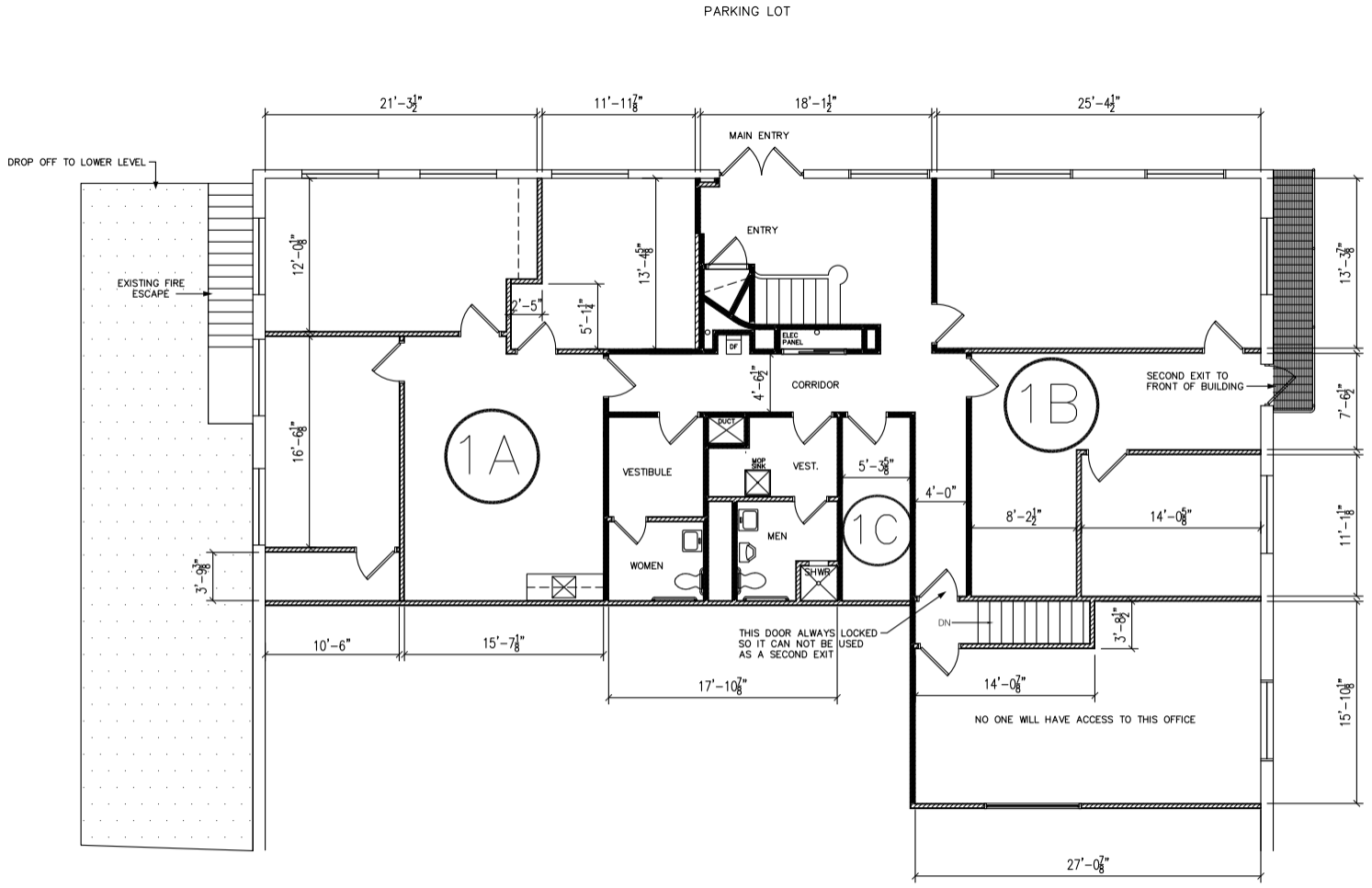
5845 Widewaters Pkwy, Suite 200
East Syracuse, New York 13057
+1 315 445 1030
pyramidbrokerage.com

FOR LEASE

6519 Towpath Road | East Syracuse, New York



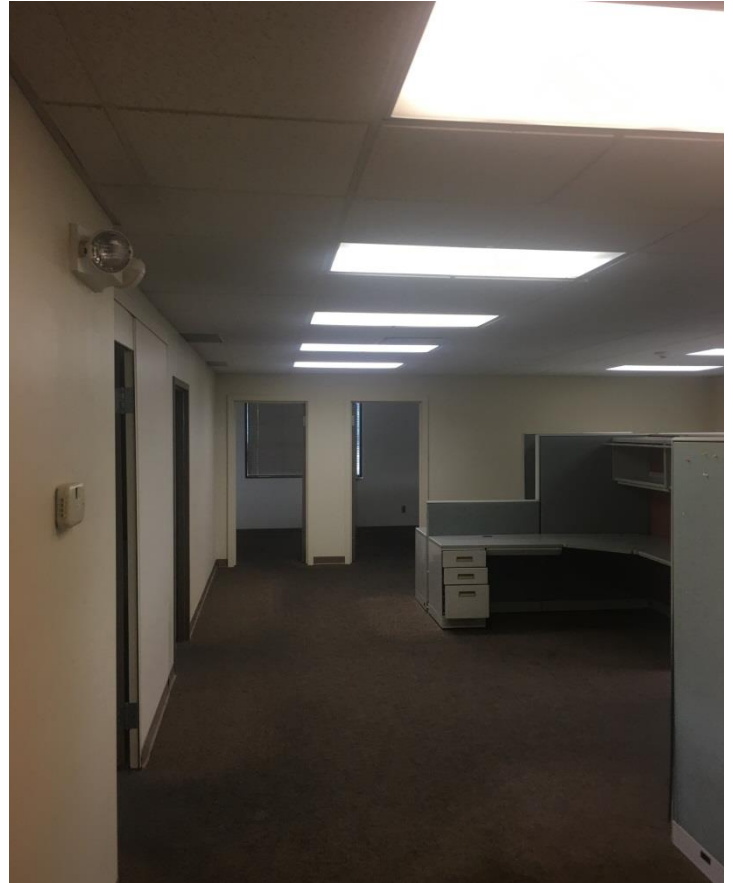
Floor Plan



GARAGE AREA

FOR LEASE

6519 Towpath Road | East Syracuse, New York



FOR LEASE

6519 Towpath Road | East Syracuse, New York

