



6+/- ACRES ON BARRETT PKWY

Zoned for Senior Living. Possible: Office
Condos, Mini Warehouses or Townhomes.
Signalized Access and Sewer on Site

3391 ERNEST BARRETT PKWY, MARIETTA, GA
BARRETT PKWY AND DALLAS HWY

DON EDWARDS
Associate Broker/KW Director
(770) 324-3457
don@dbeproperties.com
119563, GA



Property Description

5.97 acres at the intersection of Dallas Hwy and Barrett Pkwy zoned for assisted living and memory care in 2011. Previous zoning called for mixed use office condos and retail.

Great for: assisted living, office condos, animal hospital, assembly hall, research & training facility, mini warehouses, group home, private or special education school, or residential townhouses.

Located approximately 5 miles due west of downtown Marietta on the south side of Dallas Highway, at the intersection of Dallas Hwy and Barrett Pkwy with easy access to I-75 and I-575. Near some of the areas most prime retail centers like: West Cobb Marketplace, Target, the Avenue West Cobb, Village Green Retail/Kroger/Belk's retail.

Streets: Barrett Pkwy & Dallas Hwy

Lot Size: 5.97 Acres

Price: \$850,000

Zoning: OI

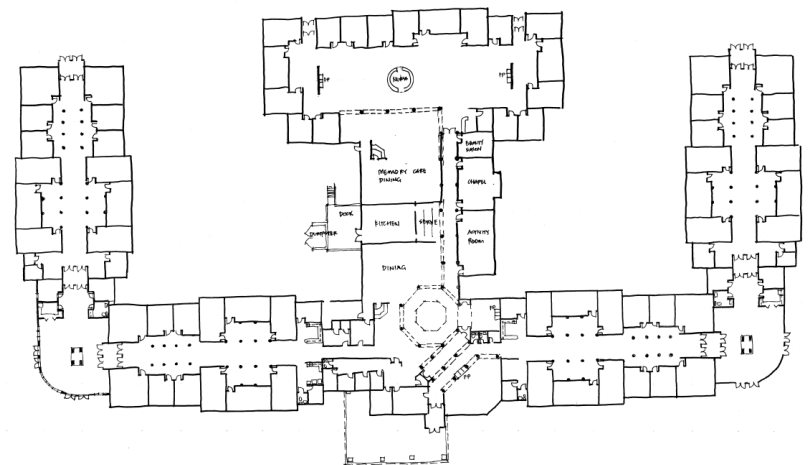
Market: NW Atlanta

Submarket: Cobb

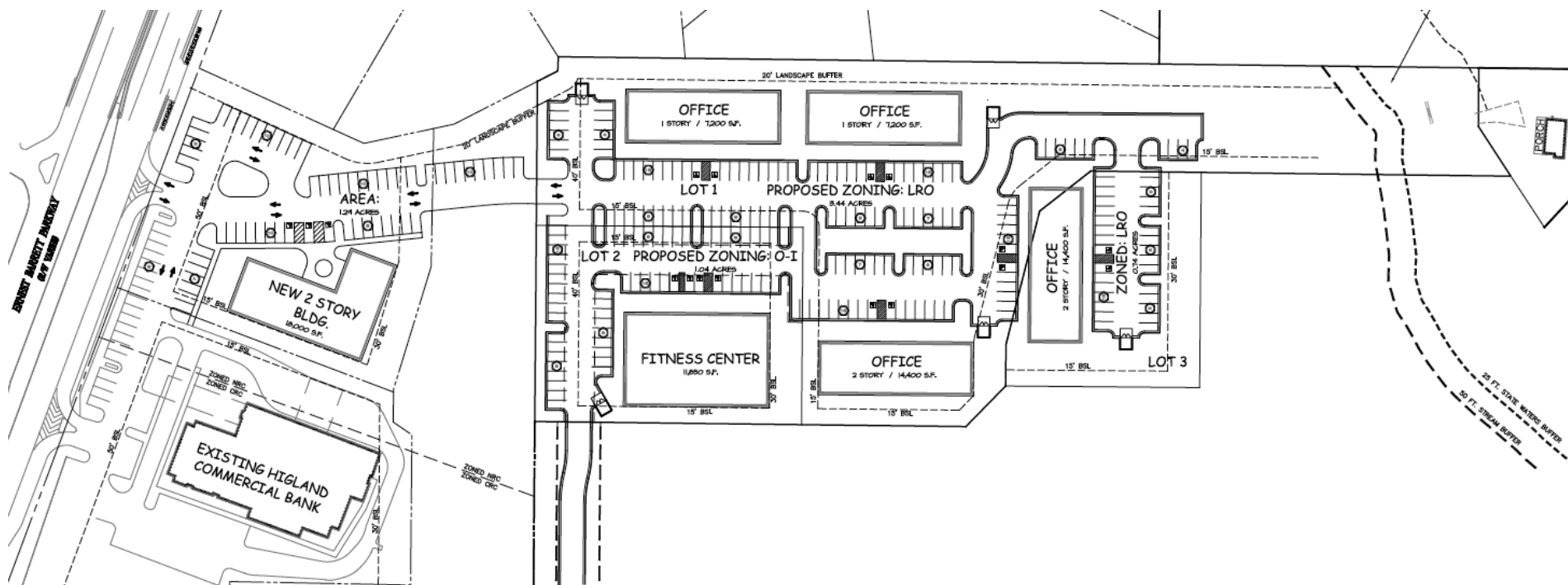


SENIOR HOUSING: Assisted Living & Memory Care

Concept designed to accommodate 60,000 sq ft, 75 bed community with approximately 1.5 acres dedicated to walking trails, along the rear of the property.



OFFICE CONDO - PROPOSED CONCEPT

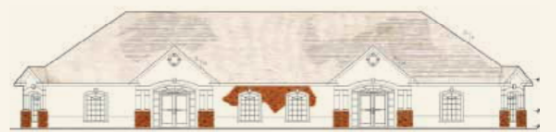


OFFICE CONDOS

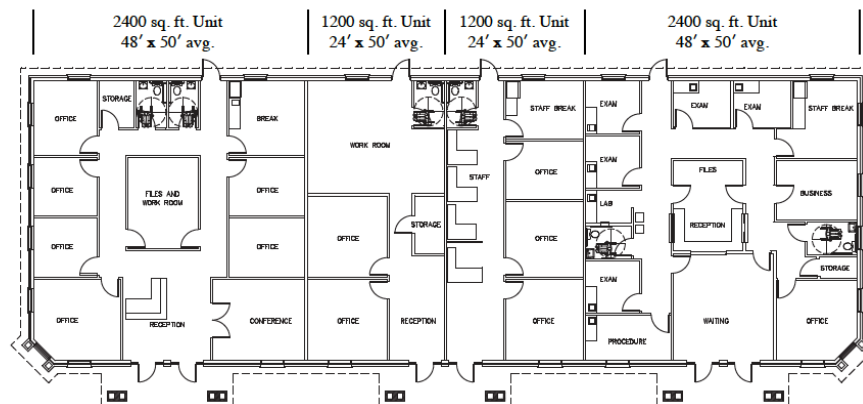
Previous zoning called for mixed use office condos and retail.



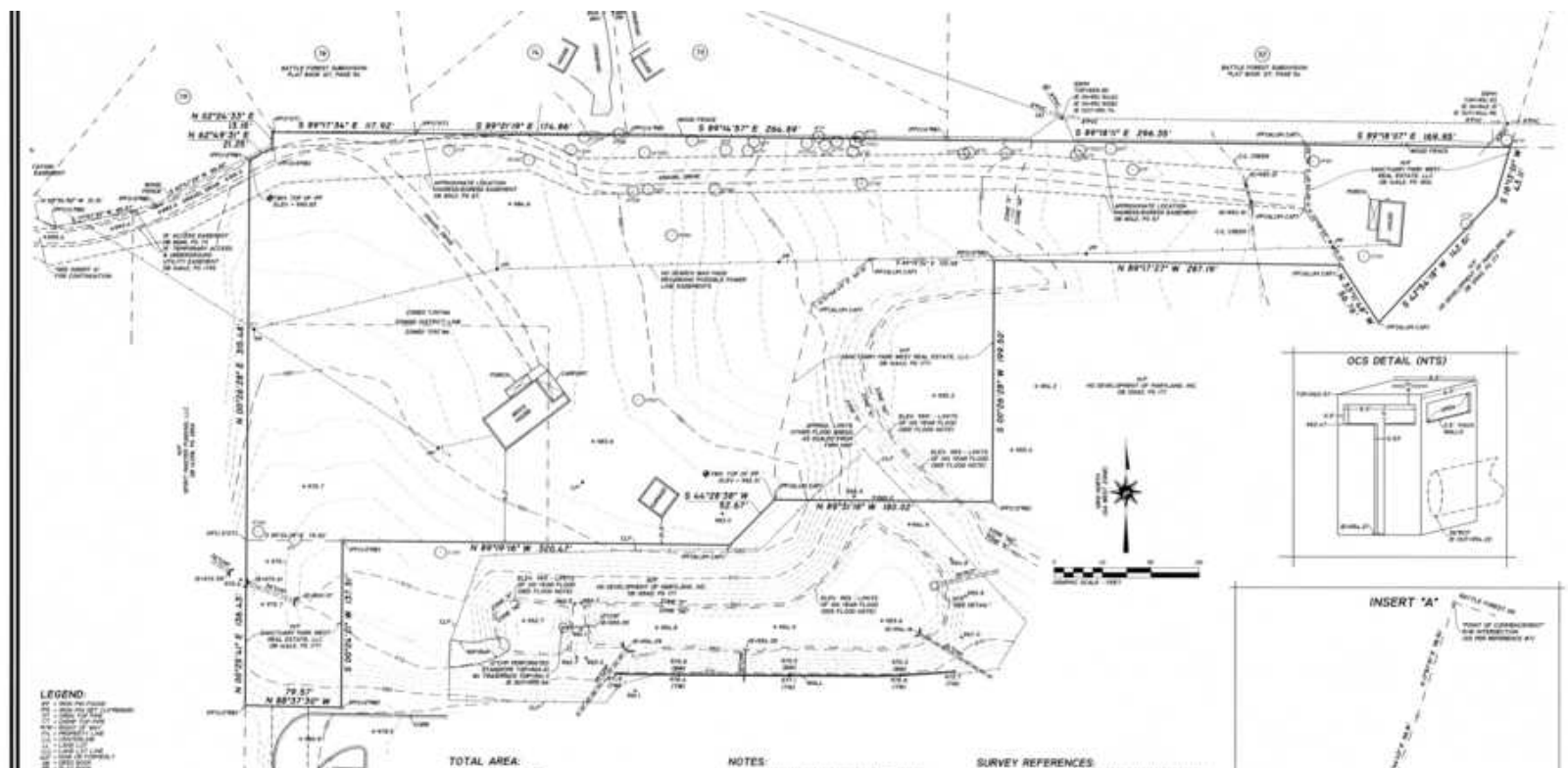
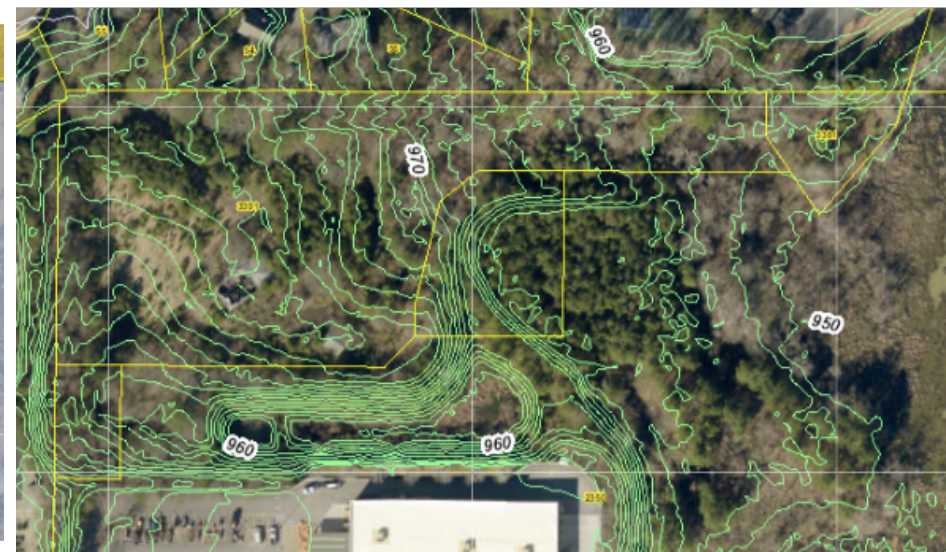
Two 2-Story 14,400 sq. ft. Buildings



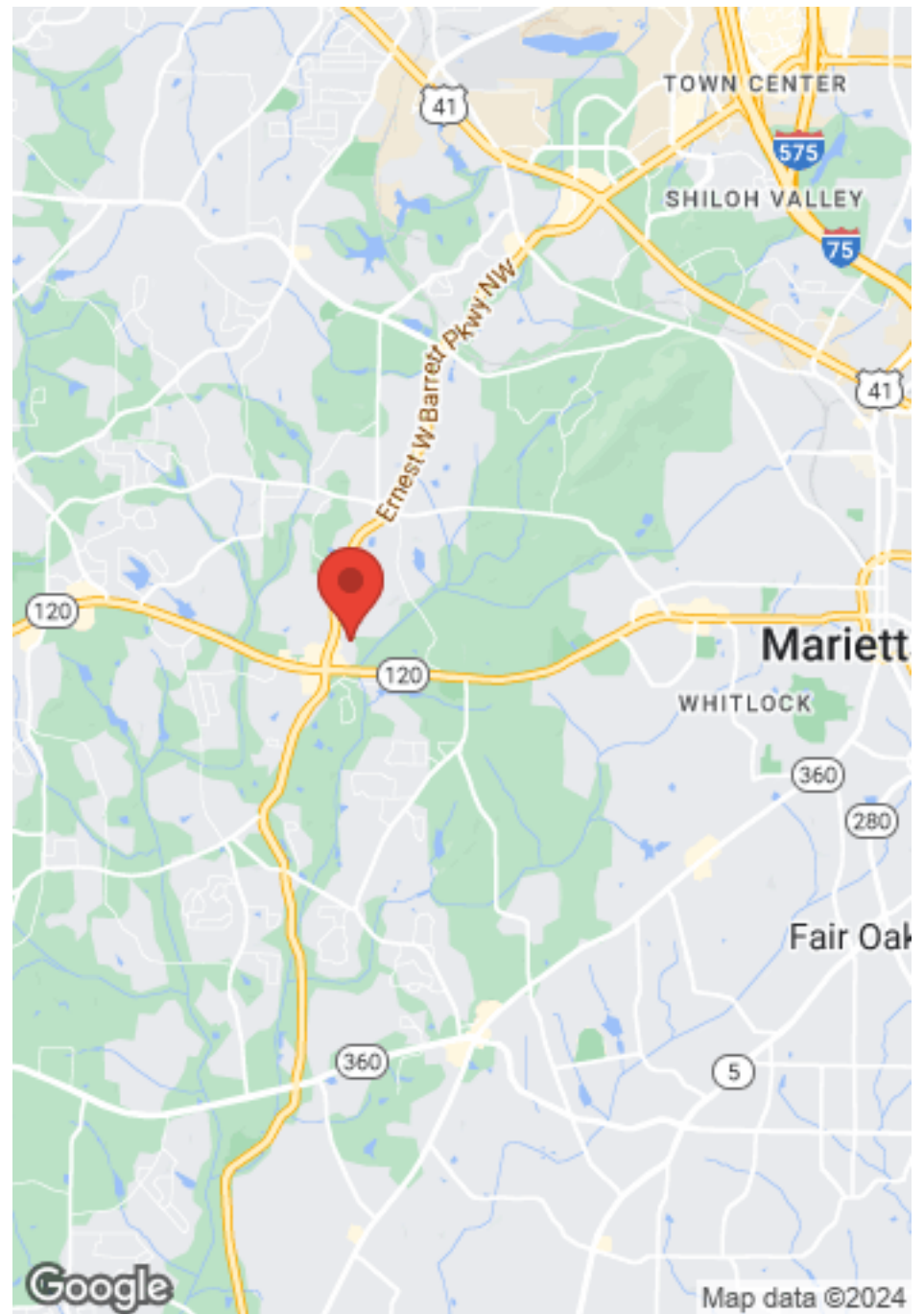
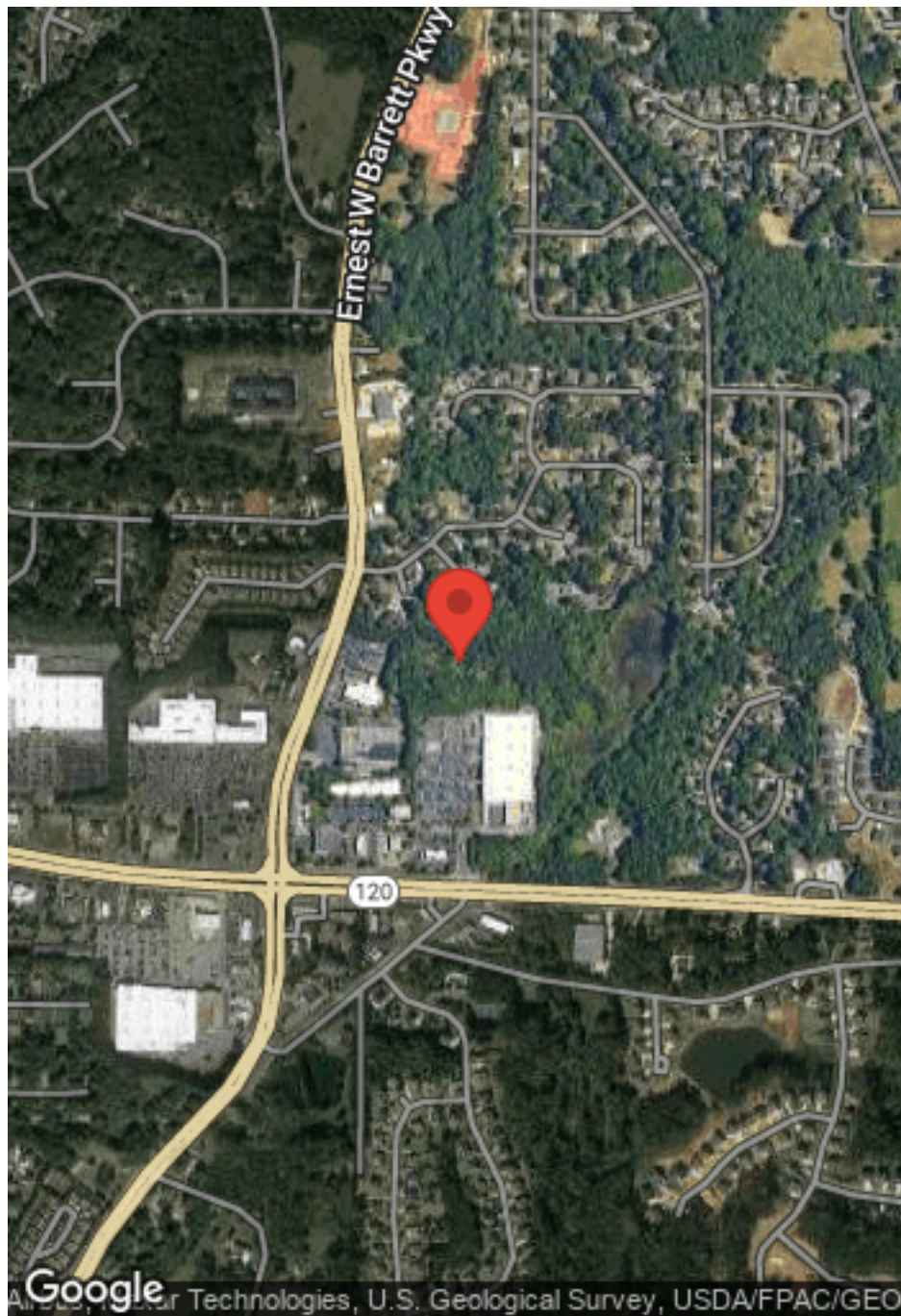
Two 1-Story 7,200 sq. ft. Buildings



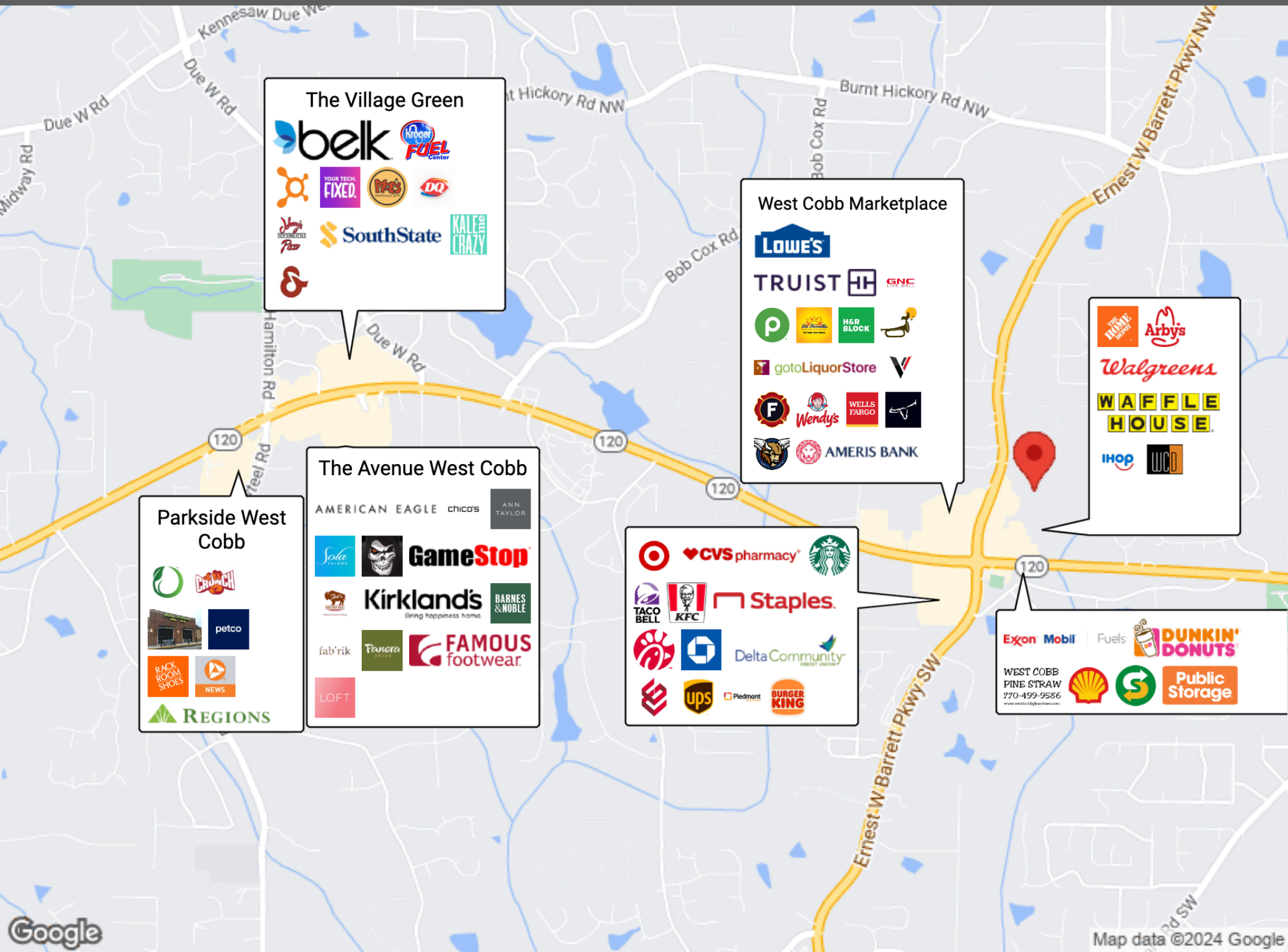
We obtained the information above from sources we believe to be reliable. However, we have not verified its accuracy and make no guarantee, warranty or representation about it. It is submitted subject to the possibility of errors, omissions, change of price, rental or other conditions, prior sale, lease or financing, or withdrawal without notice. We include projections, opinions, assumptions or estimates for example only, and they may not represent current or future performance of the property. You and your tax and legal advisors should conduct your own investigation of the property and transaction.



We obtained the information above from sources we believe to be reliable. However, we have not verified its accuracy and make no guarantee, warranty or representation about it. It is submitted subject to the possibility of errors, omissions, change of price, rental or other conditions, prior sale, lease or financing, or withdrawal without notice. We include projections, opinions, assumptions or estimates for example only, and they may not represent current or future performance of the property. You and your tax and legal advisors should conduct your own investigation of the property and transaction.



We obtained the information above from sources we believe to be reliable. However, we have not verified its accuracy and make no guarantee, warranty or representation about it. It is submitted subject to the possibility of errors, omissions, change of price, rental or other conditions, prior sale, lease or financing, or withdrawal without notice. We include projections, opinions, assumptions or estimates for example only, and they may not represent current or future performance of the property. You and your tax and legal advisors should conduct your own investigation of the property and transaction.



The Village Green

belk

Kroger FUEL Center

YOUR TECH. FIXED.

McDonald's

DO

SouthState

KALE CRAZY

SEVEN

8

West Cobb Marketplace

LOWE'S

TRUIST

GNC

H&R BLOCK

gotoLiquorStore

Wendy's

WELLS FARGO

AMERIS BANK

Arby's

Walgreens

WAFFLE HOUSE

ihop

WCD

Parkside West Cobb

petco

NEWS

RACK ROOM SHOES

REGIONS

The Avenue West Cobb

AMERICAN EAGLE

chico's

ANN TAYLOR

GameStop

Kirkland's

Bring happiness home.

BARNES & NOBLE

fab'rik

Panera

FAMOUS footwear

LOFT

Target

CVS pharmacy

Starbucks

TACO BELL

KFC

Staples

Delta Community CREDIT UNION

ups

Piedmont

BURGER KING

Exxon Mobil

Fuels

DUNKIN' DONUTS

WEST COBB PINE STRAW

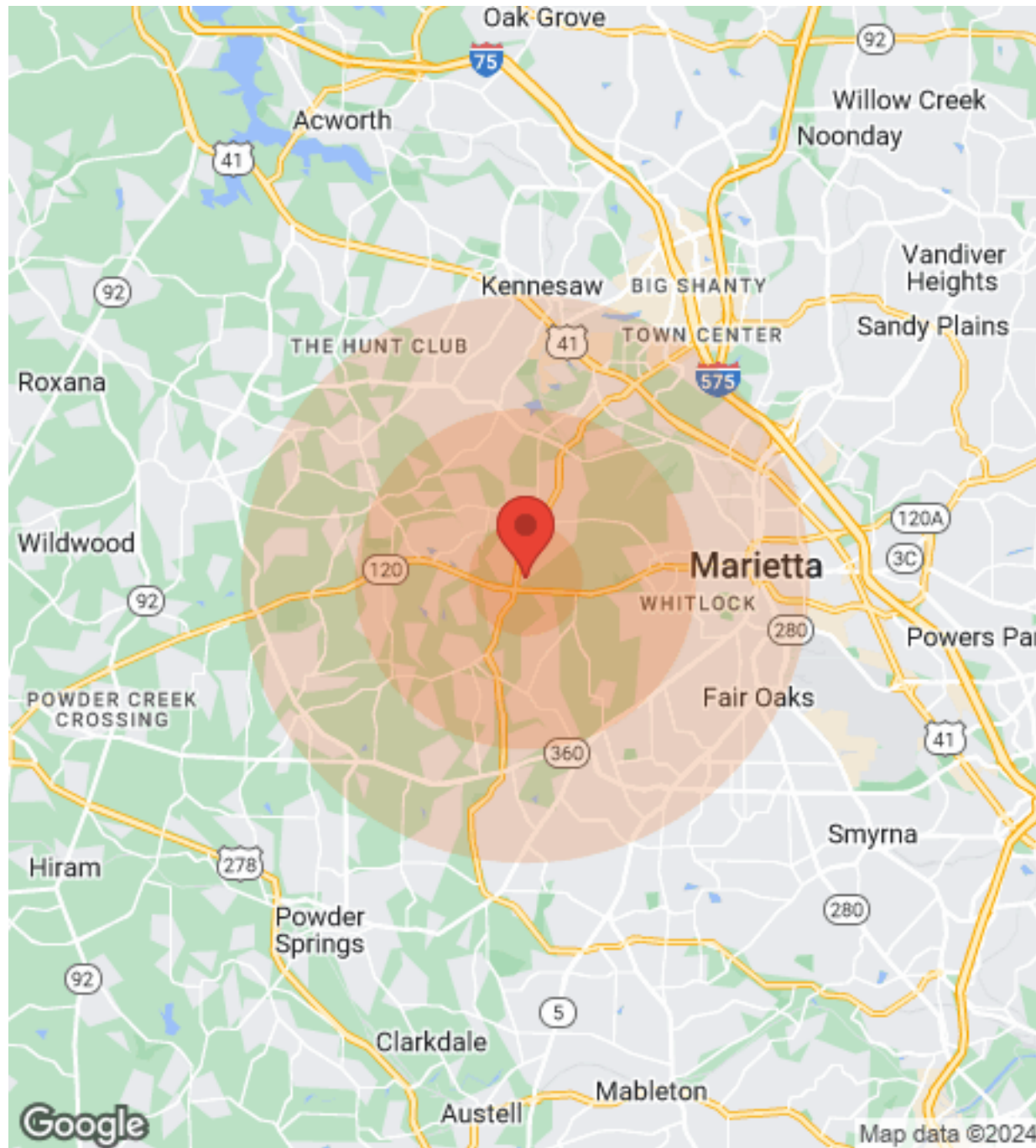
770-499-9586

www.westcobbblgfirst.com

Shell

Public Storage

DEMOGRAPHICS



Population	1 Mile	3 Miles	5 Miles
Male	524	19,267	71,397
Female	503	19,992	72,875
Total Population	1,027	39,259	144,272
Age	1 Mile	3 Miles	5 Miles
Ages 0-14	188	7,608	32,203
Ages 15-24	138	5,678	20,389
Ages 25-54	427	14,125	55,317
Ages 55-64	157	5,285	16,902
Ages 65+	117	6,563	19,461
Race	1 Mile	3 Miles	5 Miles
White	807	29,921	87,961
Black	153	7,279	36,227
Am In/AK Nat	N/A	13	217
Hawaiian	N/A	N/A	2
Hispanic	36	1,872	27,198
Multi-Racial	14	2,406	31,626
Income	1 Mile	3 Miles	5 Miles
Median	\$101,056	\$99,653	\$61,306
< \$15,000	20	1,001	4,856
\$15,000-\$24,999	62	795	4,323
\$25,000-\$34,999	19	852	4,914
\$35,000-\$49,999	21	1,104	6,189
\$50,000-\$74,999	28	2,662	9,134
\$75,000-\$99,999	31	2,153	6,897
\$100,000-\$149,999	95	3,124	8,086
\$150,000-\$199,999	10	1,530	3,905
> \$200,000	76	1,498	3,023
Housing	1 Mile	3 Miles	5 Miles
Total Units	363	16,060	57,557
Occupied	345	15,029	51,987
Owner Occupied	308	12,259	35,694
Renter Occupied	37	2,770	16,293
Vacant	18	1,031	5,570

We obtained the information above from sources we believe to be reliable. However, we have not verified its accuracy and make no guarantee, warranty or representation about it. It is submitted subject to the possibility of errors, omissions, change of price, rental or other conditions, prior sale, lease or financing, or withdrawal without notice. We include projections, opinions, assumptions or estimates for example only, and they may not represent current or future performance of the property. You and your tax and legal advisors should conduct your own investigation of the property and transaction.



DONALD B EDWARDS JR

KW Commercial Director and Associate Broker

Raised in Atlanta Georgia and licensed in 1984, my first transaction was an industrial lease for a Canadian firm seeking space in the Atlanta area. Since then I have done industrial, retail, office, multifamily, land and residential sales, as well as landlord and tenant rep, property management and site selection for national franchises. As head of the trust real estate, department for all the South Trust Banks, I was responsible for a staff and a \$750M portfolio of diverse assets including retail, office, land, mining, timber, farms, leases, mortgages, property inspections and asset management from coast to coast. In addition, I have over 18 years of commercial and residential construction experience. My land deals have included assemblages, out parcels, mini warehouses and zoning. As a past president of the Association of Georgia Real Estate Exchangors, I have experience in 1031 exchanges. In addition, I have passed all the CCIM course work.



Cell: 770.324.3457
Direct: 678-298-1612
Office: 678-298-1600
don@dbeproperties.com

Administrative/Additional Contacts:
markie@atlmetrocre.com
kylee@wnkproperties.com

DISCLAIMER

All materials and information received or derived from DBE Properties, its directors, officers, agents, advisors, affiliates and/or any third party sources are provided without representation or warranty as to completeness, veracity, or accuracy, condition of the property, compliance or lack of compliance with applicable governmental requirements, developability or suitability, financial performance of the property, projected financial performance of the property for any party's intended use or any and all other matters.

Neither DBE Properties, its directors, officers, agents, advisors, or affiliates makes any representation or warranty, express or implied, as to accuracy or completeness of the any materials or information provided, derived, or received. Materials and information from any source, whether written or verbal, that may be furnished for review are not a substitute for a party's active conduct of its own due diligence to determine these and other matters of significance to such party. DBE Properties will not investigate or verify any such matters or conduct due diligence for a party unless otherwise agreed in writing.

EACH PARTY SHALL CONDUCT ITS OWN INDEPENDENT INVESTIGATION AND DUE DILIGENCE.

Any party contemplating or under contract or in escrow for a transaction is urged to verify all information and to conduct their own inspections and investigations including through appropriate third-party independent professionals selected by such party. All financial data should be verified by the party including by obtaining and reading applicable documents and reports and consulting appropriate independent professionals. DBE Properties makes no warranties and/or representations regarding the veracity, completeness, or relevance of any financial data or assumptions. DBE Properties does not serve as a financial advisor to any party regarding any proposed transaction.

All data and assumptions regarding financial performance, including that used for financial modeling purposes, may differ from actual data or performance. Any estimates of market rents and/or projected rents that may be provided to a party do not necessarily mean that rents can be established at or increased to that level. Parties must evaluate any applicable contractual and governmental limitations as well as market conditions, vacancy factors and other issues in order to determine rents from or for the property. Legal questions should be discussed by the party with an attorney. Tax questions should be discussed by the party with a certified public accountant or tax attorney. Title questions should be discussed by the party with a title officer or attorney. Questions regarding the condition of the property and whether the property complies with applicable governmental requirements should be discussed by the party with appropriate engineers, architects, contractors, other consultants, and governmental agencies. All properties and services are marketed by DBE Properties in compliance with all applicable fair housing and equal opportunity laws.