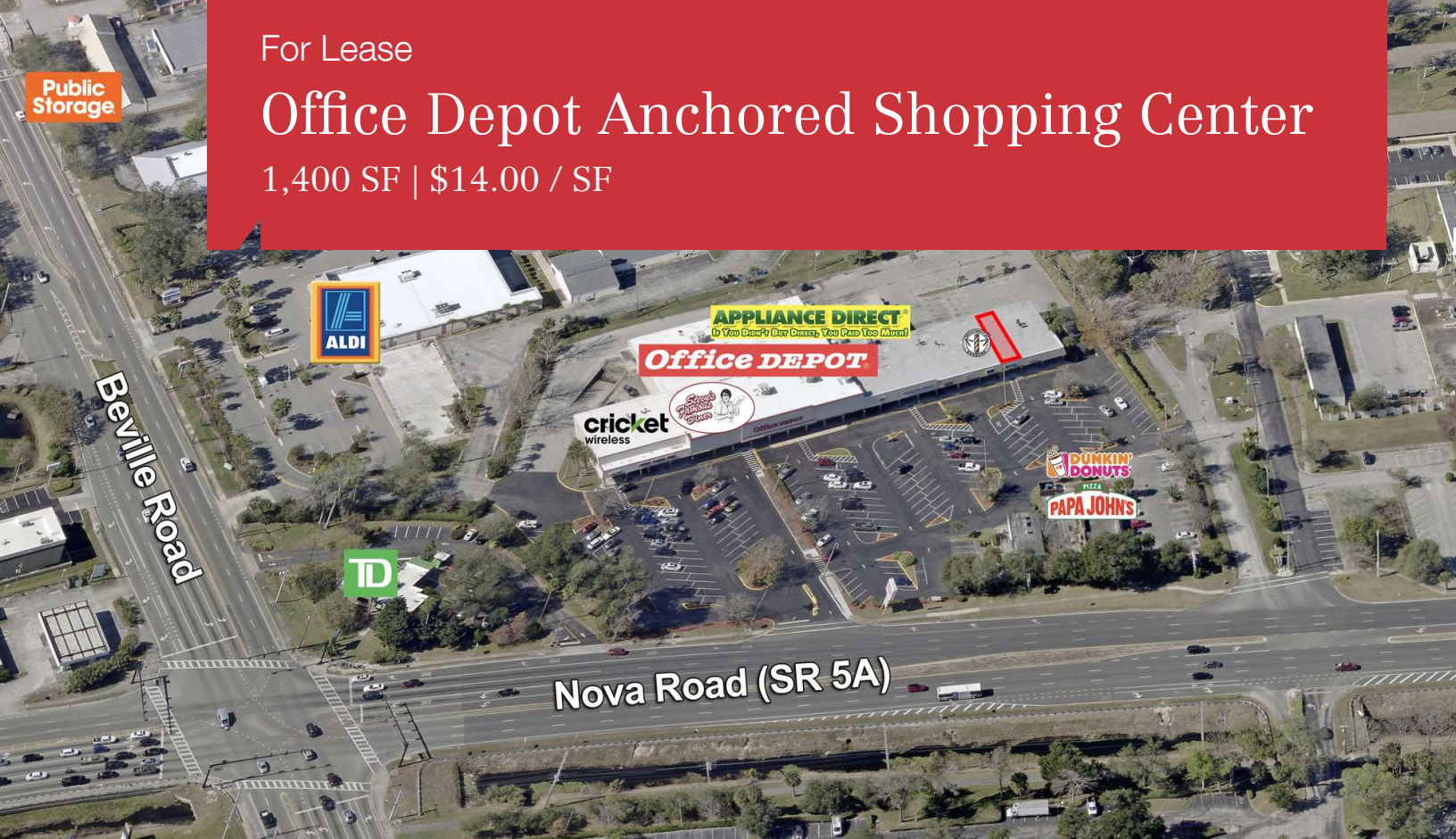


For Lease

Office Depot Anchored Shopping Center

1,400 SF | \$14.00 / SF

Public Storage



1500 South Nova Road

Daytona Beach, Florida 32114

Property Highlights

- 49,128± SF retail center at the corner of Beville and Nova Roads
- Center is anchored by Office Depot
- Only 1 unit available - 1,400± SF
- Great visibility with ingress/egress from Nova Road & west-bound Beville Road
- Exceptional traffic counts: 36,500 (Nova Road) & 31,000 (Beville Road)
- Established and growing retail trade area
- Surrounded by dense residential population
- 5 minutes from I-4 and I-95 on main South Daytona Beach artery (Beville Road)

DEMOGRAPHICS

Stats	Population	Avg. HH Income
3 Miles	72,269	\$61,705
5 Miles	141,126	\$64,592
7 Miles	187,199	\$69,314

AVAILABLE SPACES

Space	Lease Rate	Size (SF)
Unit 3	\$14.00/SF NNN	1,400

For more information

Brad Gifford

O: 386 506 0037
bgifford@realvest.com

