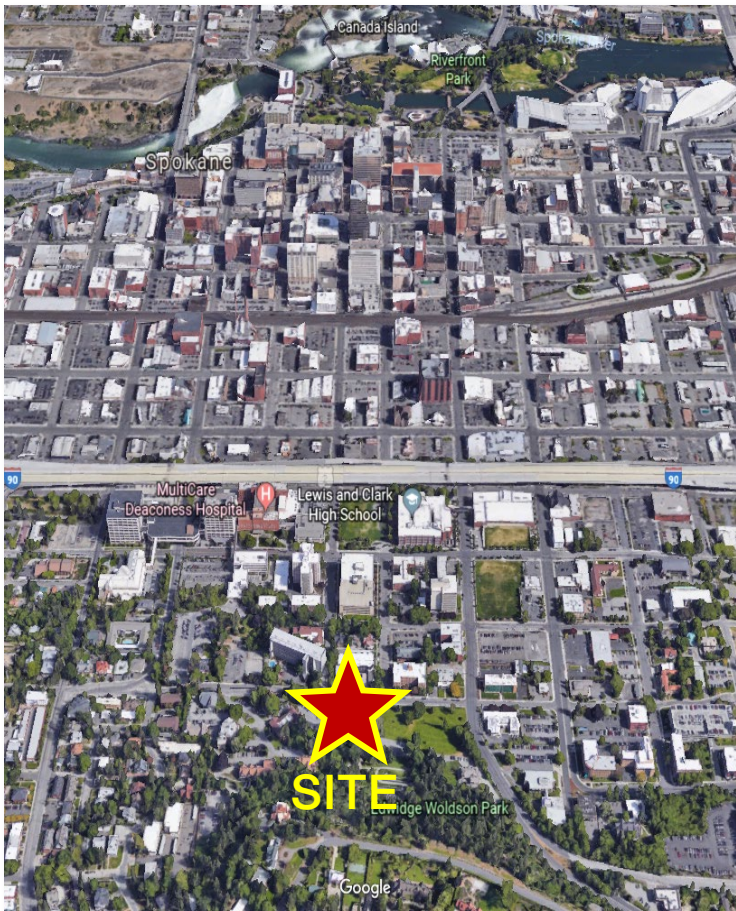




Office Available
For Lease



707 W. 7th Avenue

Spokane, WA 99204

Property Features:

- Space Available:
- 701 W 7th Ave - Suite 150: 1,432 RSF ±
 - Multiple Private Offices
 - Front Desk/Reception Area
 - Available February 1, 2024
- Free On-Site Parking
- Great Location near the Medical District and close to the Downtown Core

Lease Rate:

\$21.00/SF Full Service (Excluding Janitorial)

For More Information, contact:

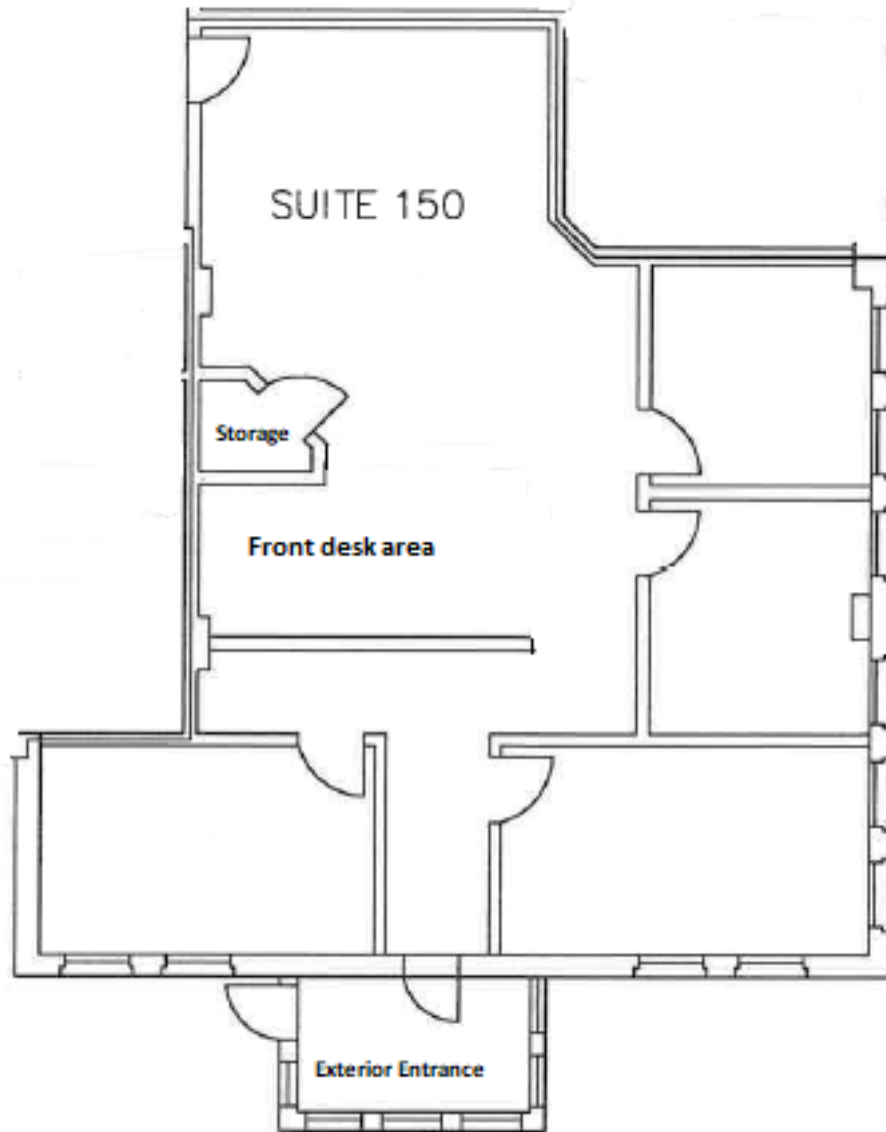
Jon Jeffreys, SIOR

509 622 3566 • jjeffreys@naiblack.com

NO WARRANTY OR REPRESENTATION, EXPRESS OR IMPLIED, IS MADE AS TO THE ACCURACY OF THE INFORMATION CONTAINED HEREIN, AND THE SAME IS SUBMITTED SUBJECT TO ERRORS, OMISSIONS, CHANGE OF PRICE, RENTAL OR OTHER CONDITIONS, PRIOR SALE, LEASE OR FINANCING, OR WITHDRAWAL WITHOUT NOTICE, AND OF ANY SPECIAL LISTING CONDITIONS IMPOSED BY OUR PRINCIPALS NO WARRANTIES OR REPRESENTATIONS ARE MADE AS TO THE CONDITION OF THE PROPERTY OR ANY HAZARDS CONTAINED THEREIN ARE ANY TO BE IMPLIED.0

Black Commercial, Inc.
801 W. Riverside Ave., Suite 300
Spokane, Washington 99201
509.623.1000
naiblack.com

Suite 150: 1,432 RSF +/-



For More Information, contact: **Jon Jeffreys, SIOR**
509 622 3566 • jjeffreys@naiblack.com