

Former Bank Branch and Parking Lot for Sale

Old National Bank
1 N. Indiana Street
Greencastle, Indiana 46135



Perfect for Retail or Multi-Family Conversion!



Snapshot

Building Size:	27,300 SF
Land:	0.21 Acre
Zoned:	Z001 Residential
Parking:	22 Spaces (1.2 / 1,000 SF)
Year Built:	1900
List Price:	\$799,000

Property Details

- Three-floor 27,300 SF former bank branch building and parking lot for sale.
- Perfect for conversion to apartments and includes a vacant lot available for new retail or multi-family construction.
- Walk to surrounding amenities such as municipal buildings, local and national restaurants, bars and retail establishments which includes a Starbucks Coffee across the street.
- Only 3 blocks from the DePauw University campus.

3502 Woodview Trace, Suite 250
Indianapolis, Indiana 46268
317.875.8888
317.875.9999 Fax
www.cressy.com

Global Brokerage Division of Cressy Commercial Real Estate

JEFFREY S. HARRIS, SIOR
President
317.331.8888
jharris@cressy.com

JOE LONNEMANN
Vice President
317.566.5624
jdl@cressy.com

Information furnished regarding property for sale, rental or financing is from sources deemed reliable. But no warranty or representation is made as to the accuracy thereof and same is submitted subject to errors, omissions, change of price, rental or other conditions, prior sale, leased, financing or withdrawal without notice. No liability of any kind is to be imposed on the broker herein.

Former Bank Branch and Parking Lot for Sale

Old National Bank
1 N. Indiana Street
Greencastle, Indiana 46135

NAI Cressy

COMMERCIAL REAL ESTATE SERVICES, WORLDWIDE

Property Photos



3502 Woodview Trace, Suite 250
Indianapolis, Indiana 46268
317.875.8888
317.875.9999 Fax
www.cressy.com

Global Brokerage Division of Cressy Commercial Real Estate

JEFFREY S. HARRIS, SIOR
President
317.331.8888
jharris@cressy.com

JOE LONNEMANN
Vice President
317.566.5624
jdl@cressy.com

Information furnished regarding property for sale, rental or financing is from sources deemed reliable. But no warranty or representation is made as to the accuracy thereof and same is submitted subject to errors, omissions, change of price, rental or other conditions, prior sale, leased, financing or withdrawal without notice. No liability of any kind is to be imposed on the broker herein.

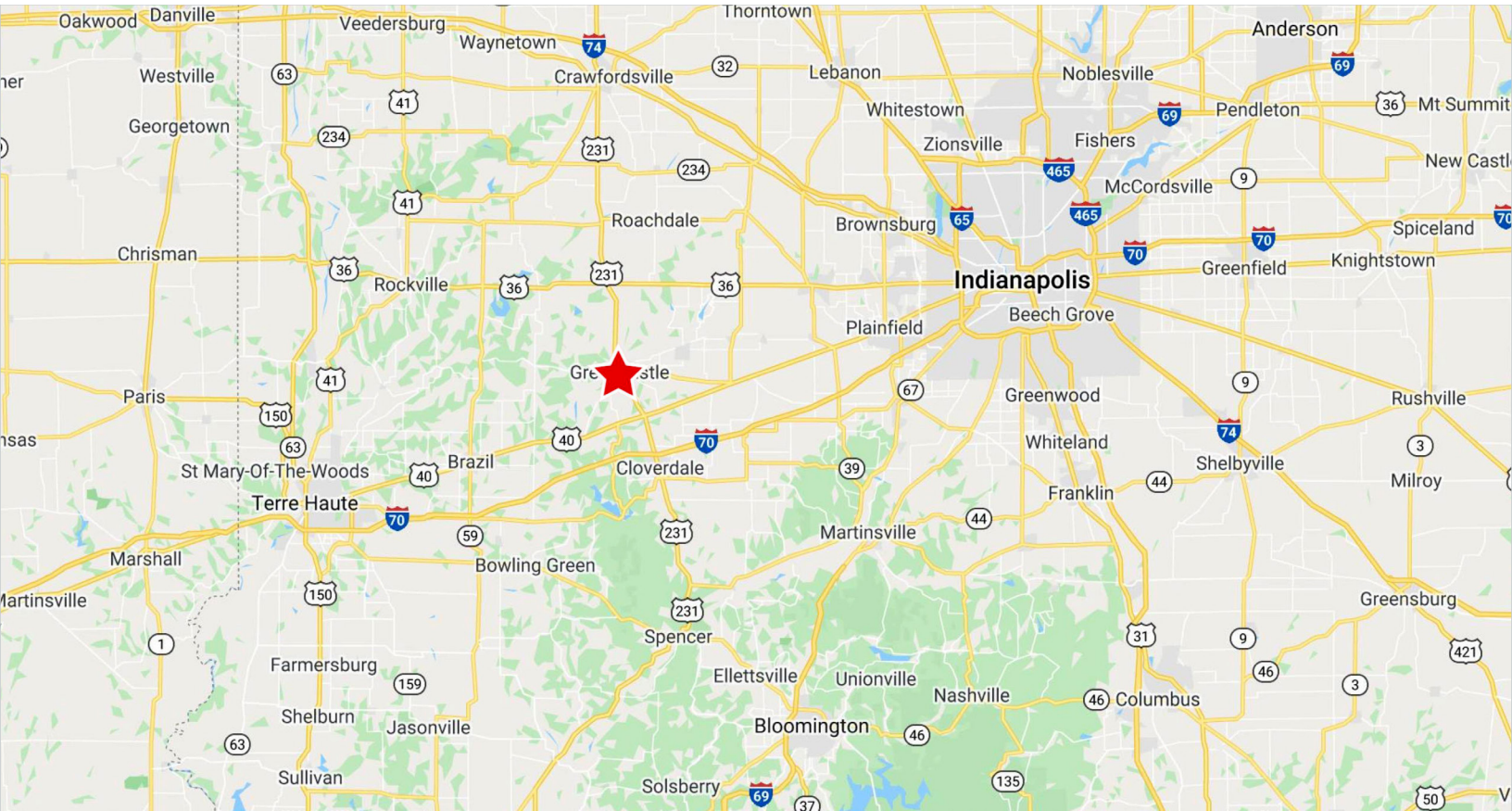
Former Bank Branch and Parking Lot for Sale

Old National Bank
1 N. Indiana Street
Greencastle, Indiana 46135



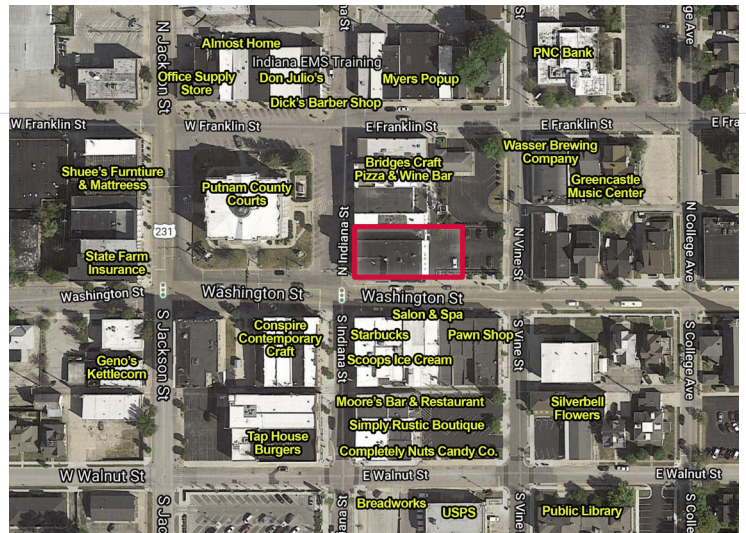
COMMERCIAL REAL ESTATE SERVICES, WORLDWIDE

Centrally Located to Indianapolis, Bloomington, Terre Haute and Lafayette, IN



Location

The property is in downtown Greencastle, Indiana at the corner of N. Indiana St. and Washington St. (US 231). It is located within an hour of Indianapolis, Lafayette, Bloomington and Terre Haute. Greencastle is home to DePauw University as well as a mix of industrial and commercial businesses.



2020 DEMOGRAPHICS	1 MILE	3 MILE	5 MILE
POPULATION	7,537	12,982	15,307
NUMBER OF HOUSEHOLDS	2,243	4,477	5,373
MEDIAN HOUSEHOLD INCOME	\$55,529	\$57,160	\$60,852

3502 Woodview Trace, Suite 250
Indianapolis, Indiana 46268
317.875.8888
317.875.9999 Fax
www.cressy.com

JEFFREY S. HARRIS, SIOR
President
317.331.8888
jharris@cressy.com

JOE LONNEMANN
Vice President
317.566.5624
jdl@cressy.com

Information furnished regarding property for sale, rental or financing is from sources deemed reliable. But no warranty or representation is made as to the accuracy thereof and same is submitted subject to errors, omissions, change of price, rental or other conditions, prior sale, leased, financing or withdrawal without notice. No liability of any kind is to be imposed on the broker herein.